

**This electronic collection of documents is provided
for the convenience of the user
and is Not a Certified Document –**

**The documents contained herein were originally issued
and sealed by the individuals whose names and license
numbers appear on each page, on the dates appearing
with their signature on that page.**

**This file or an individual page
shall not be considered a certified document.**

09/08/99

TIP PROJECT: W-5601EV

CONTRACT: C204133

STATE OF NORTH CAROLINA
DIVISION OF HIGHWAYS

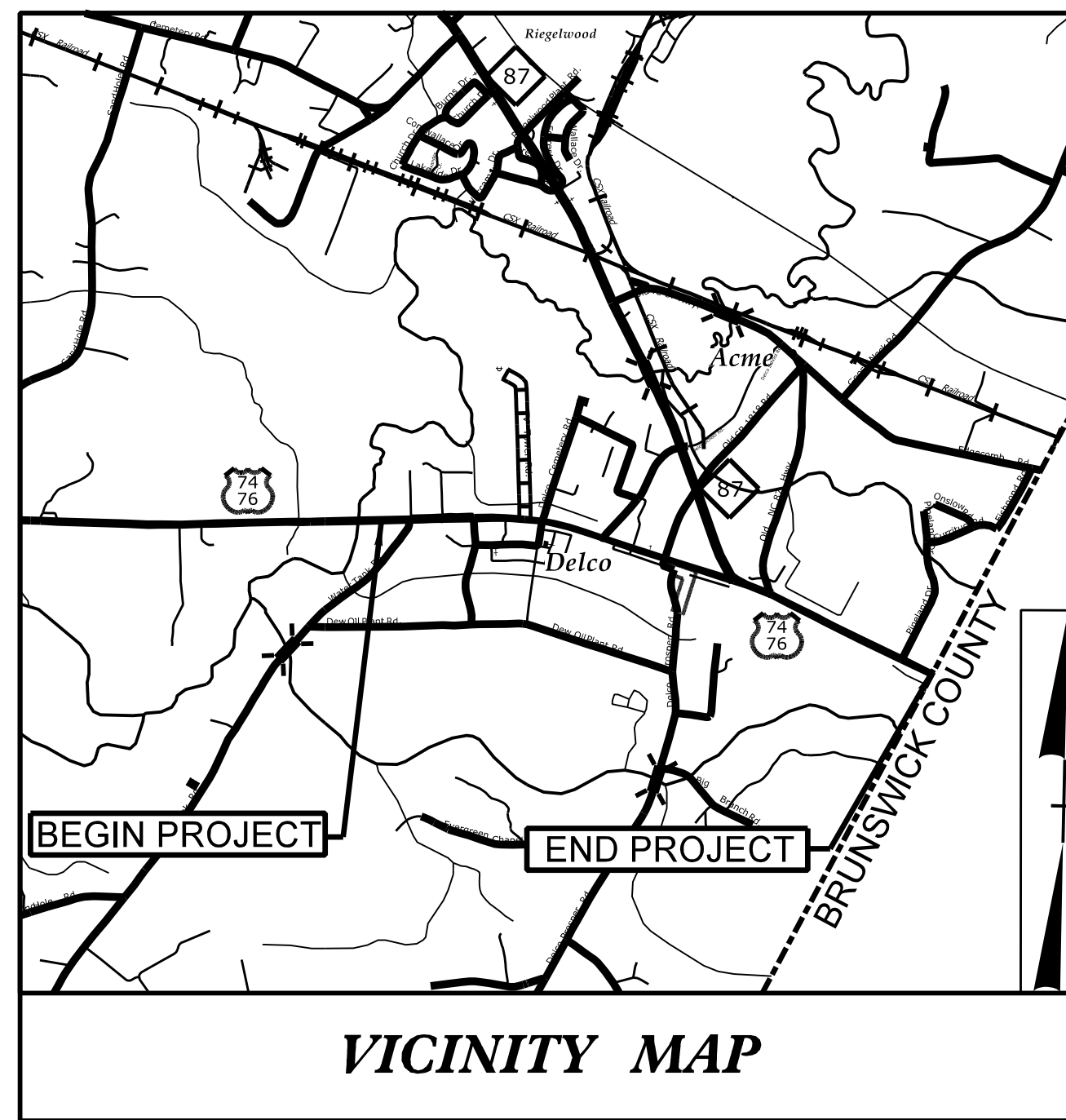
UTILITIES BY OTHERS PLANS
COLUMBUS COUNTY

LOCATION: US74 FROM SR 1824 (WATER TANK RD) TO JUST EAST OF THE
BRUNSWICK COUNTY LINE

TYPE OF WORK: POWER (DISTRIBUTION), COMMUNICATIONS

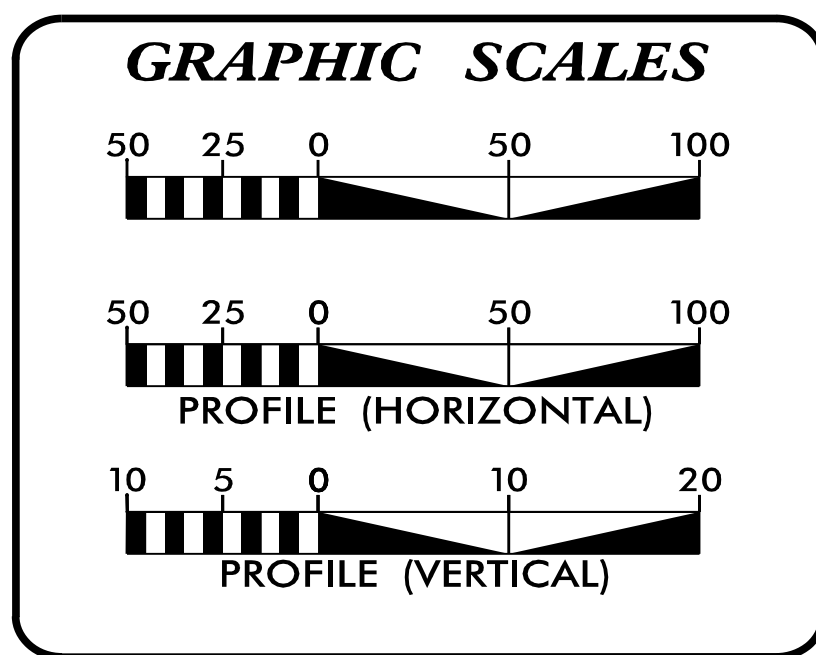
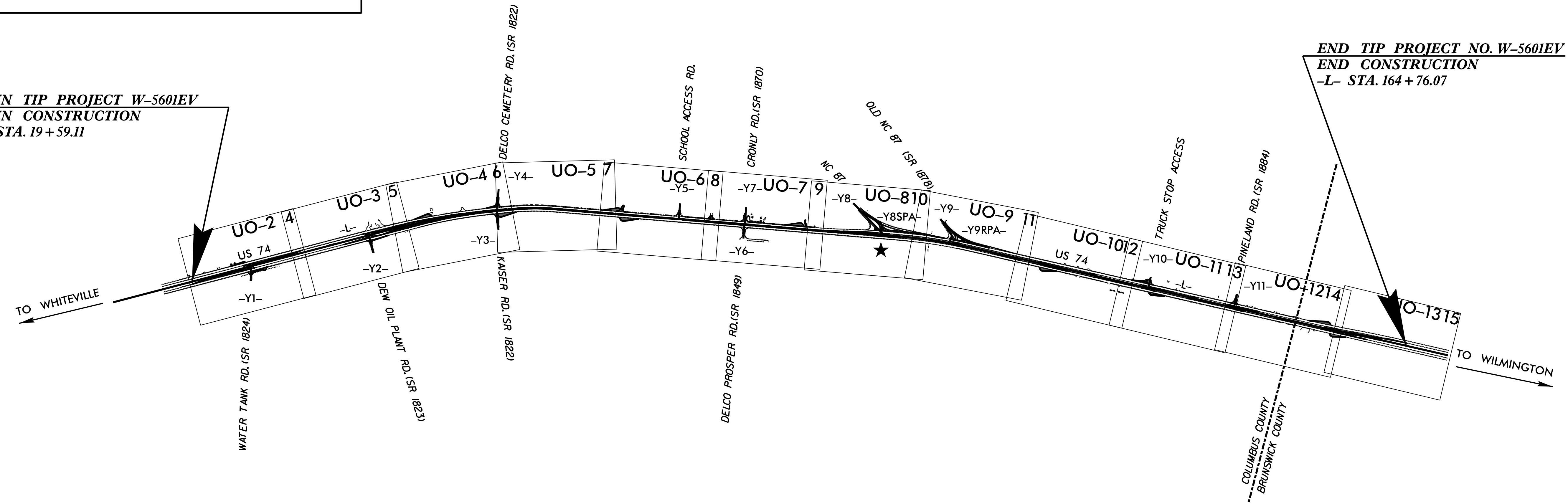
T.I.P. NO.	SHEET NO.
W-5601EV	UO-1

NOTE:
ALL UTILITY WORK SHOWN ON THIS SHEET WILL BE DONE BY OTHERS. NO PAYMENT WILL BE MADE TO THE CONTRACTOR FOR UTILITY WORK SHOWN ON THIS SHEET.



BEGIN TIP PROJECT W-5601EV
BEGIN CONSTRUCTION
-L- STA. 19+59.11

END TIP PROJECT NO. W-5601EV
END CONSTRUCTION
-L- STA. 164+76.07



INDEX OF SHEETS

SHEET NO.:	DESCRIPTION:
UO-1	TITLE SHEET
UO-2 THRU UO-13	UBO PLAN SHEETS

UTILITY OWNERS WITH CONFLICTS

(A) POWER (DISTRIBUTION) - DUKE ENERGY
 (B) COMMUNICATIONS - SPECTRUM
 (C) COMMUNICATIONS - CENTURYLINK
 (D) COMMUNICATIONS - AT&T

PREPARED IN THE OFFICE OF:

SO-DEEP | SAM NC™

A SAM COMPANY
 2800-154 Sumner Boulevard, Raleigh, NC 27616 Tel 919-878-7466

Keith Garry UTILITY PROJECT MANAGER
 Freddie Bunn PROJECT UTILITY COORDINATOR

DIVISION OF HIGHWAYS
DIVISION 6
DIV ADDRESS
558 Gillespie St.
Fayetteville, NC 28302

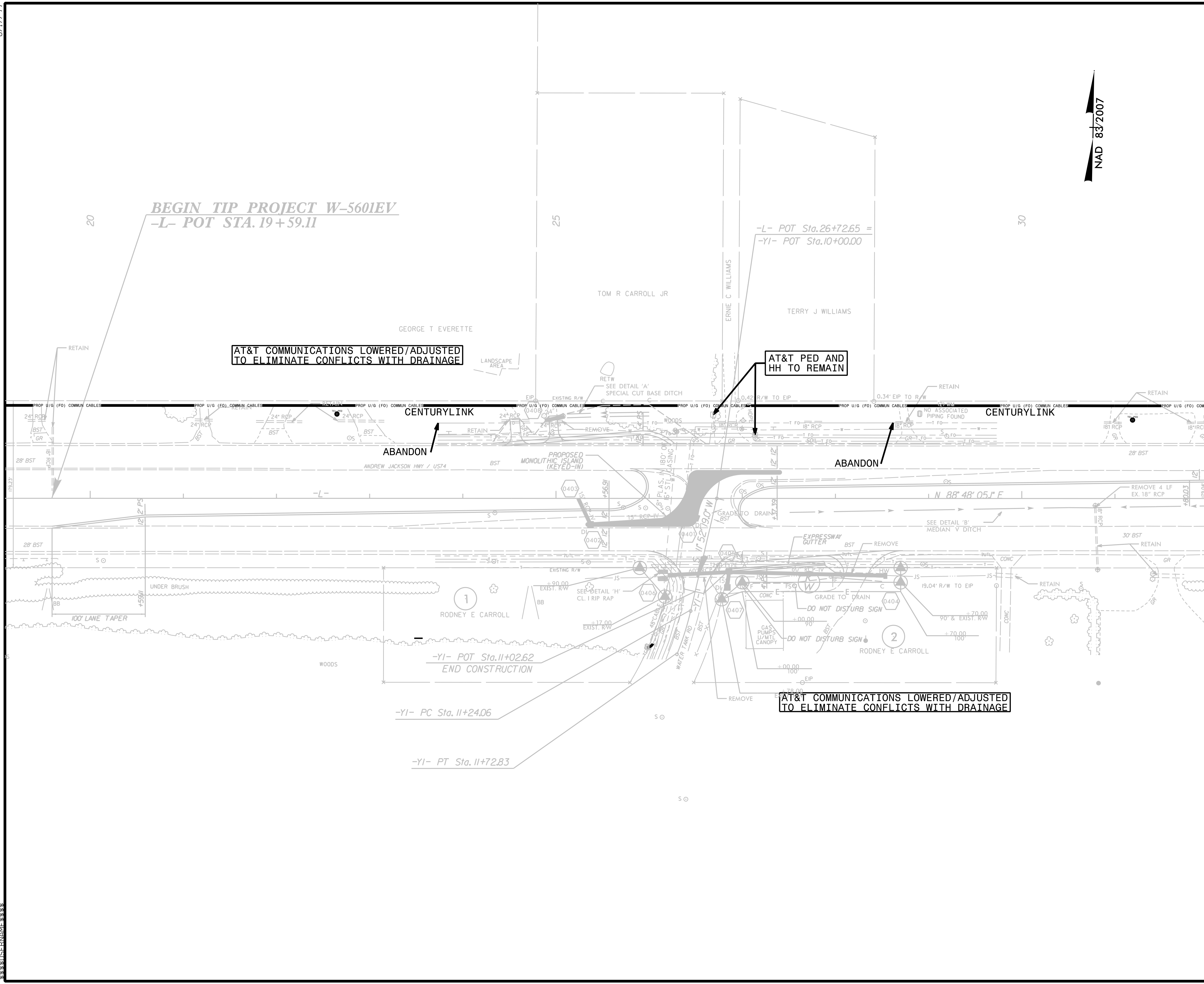
Randy Rogers DIVISION CONTACT #1
 Rick Handlin DIVISION CONTACT #2
 Blythe Jordan DIVISION CONTACT #3
 Steve Kendall, PE DIVISION CONTACT #4

\$\$\$\$\$SYTIME\$\$\$\$\$
\$\$\$\$\$DDN\$\$\$\$\$
\$\$\$\$\$SERNAME\$\$\$\$\$

UTILITIES BY OTHERS

NOTE:
 ALL UTILITY WORK SHOWN ON THIS SHEET WILL BE DONE BY OTHERS. NO PAYMENT WILL BE MADE TO THE CONTRACTOR FOR UTILITY WORK SHOWN ON THIS SHEET.

8/17/99

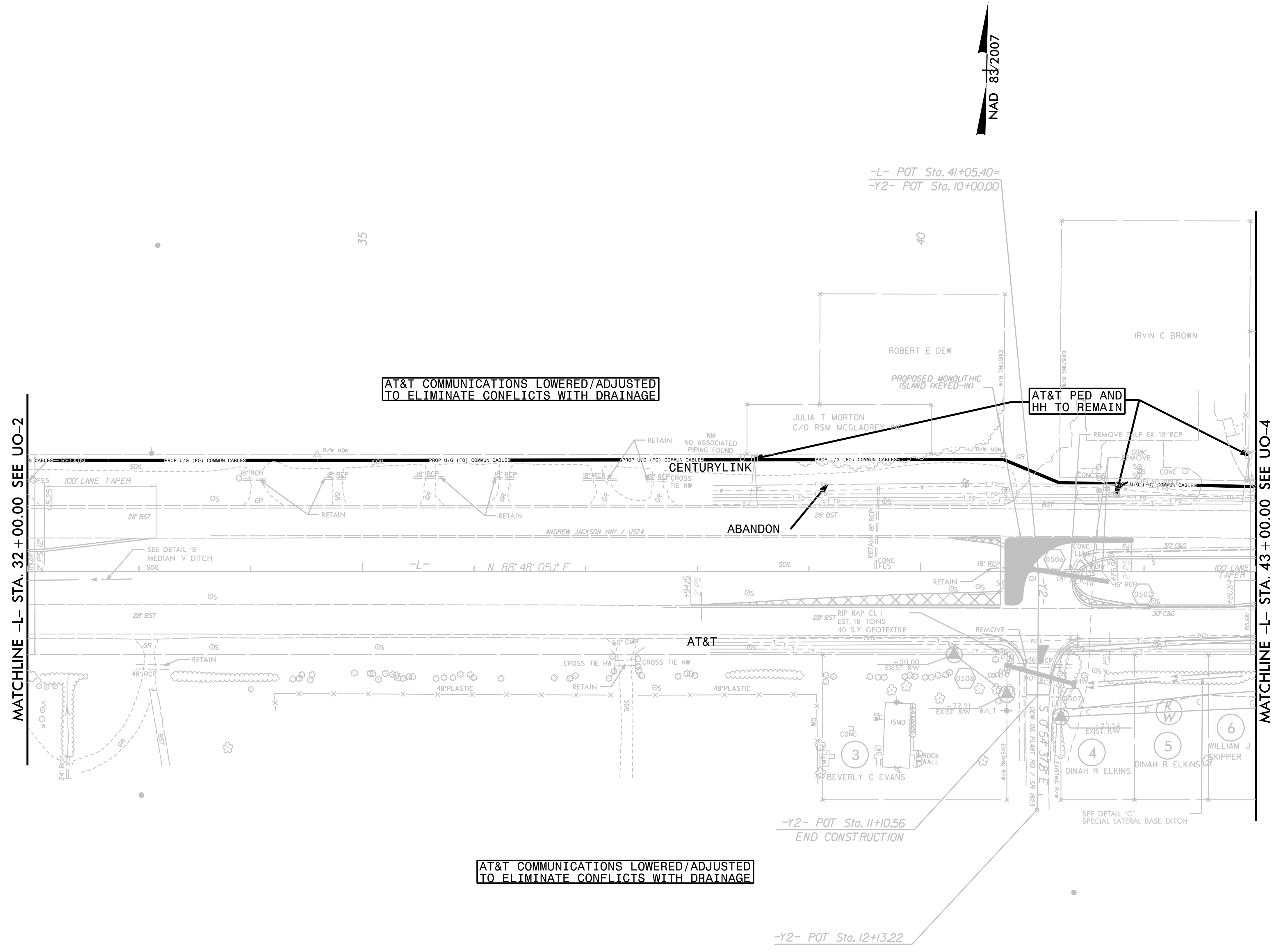


MATCHLINE -L- STA. 32 + 00.00 SEE UO-3

UTILITIES BY OTHERS

NOTE:
 ALL UTILITY WORK SHOWN ON THIS SHEET WILL BE DONE BY OTHERS. NO PAYMENT WILL BE MADE TO THE CONTRACTOR FOR UTILITY WORK SHOWN ON THIS SHEET.

8/17/99



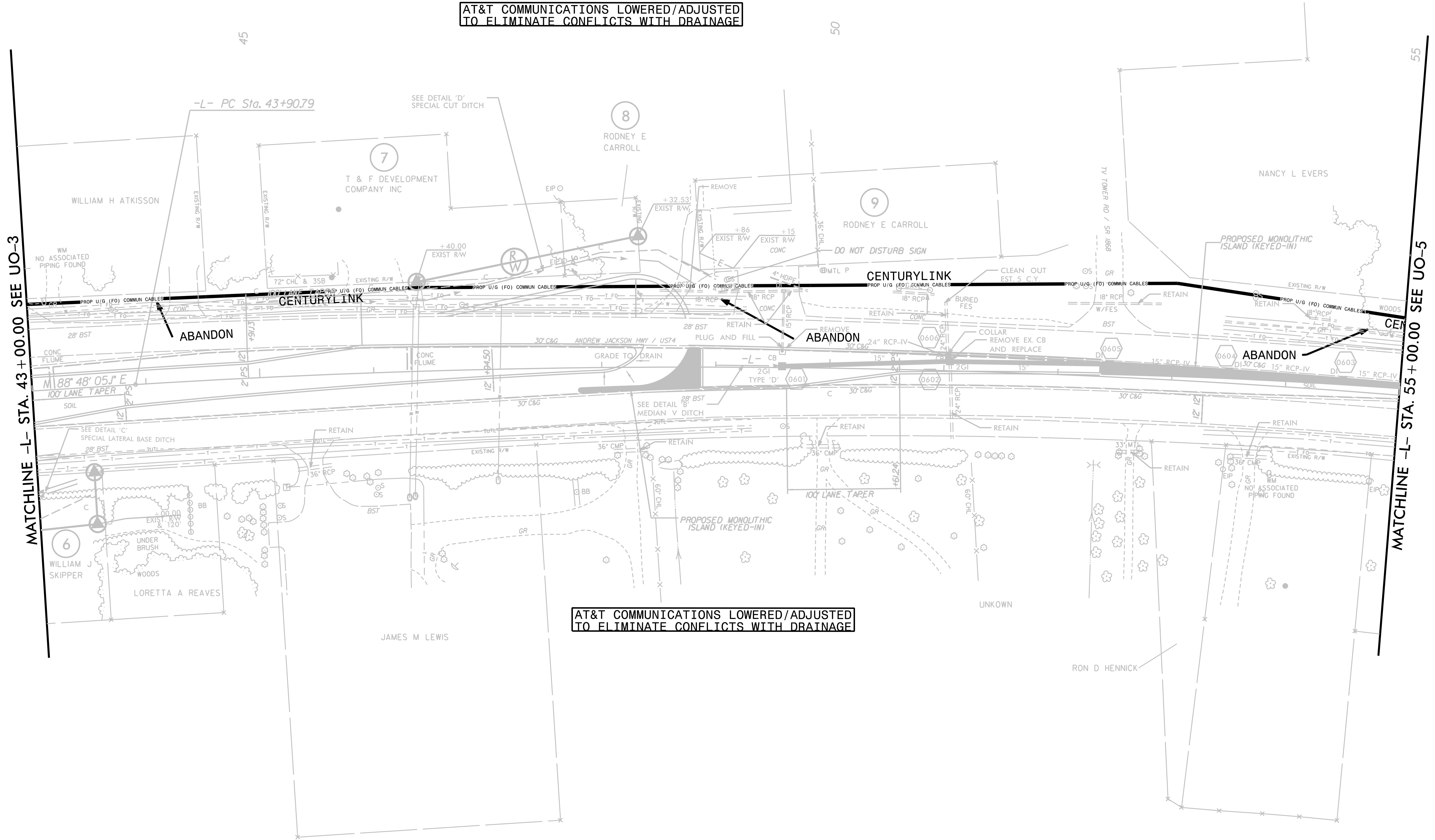
MATCHLINE -L- STA. 32 + 00.00 SEE UO-2

MATCHLINE -L- STA. 43 + 00.00 SEE UO-4

NOTE:
 ALL UTILITY WORK SHOWN ON THIS SHEET WILL BE DONE BY OTHERS. NO PAYMENT WILL BE MADE TO THE CONTRACTOR FOR UTILITY WORK SHOWN ON THIS SHEET.

8/17/99

NAD 83/2001



MATCHLINE -L- STA. 43+00.00 SEE UO-3

MATCHLINE -L- STA. 55+00.00 SEE UO-5

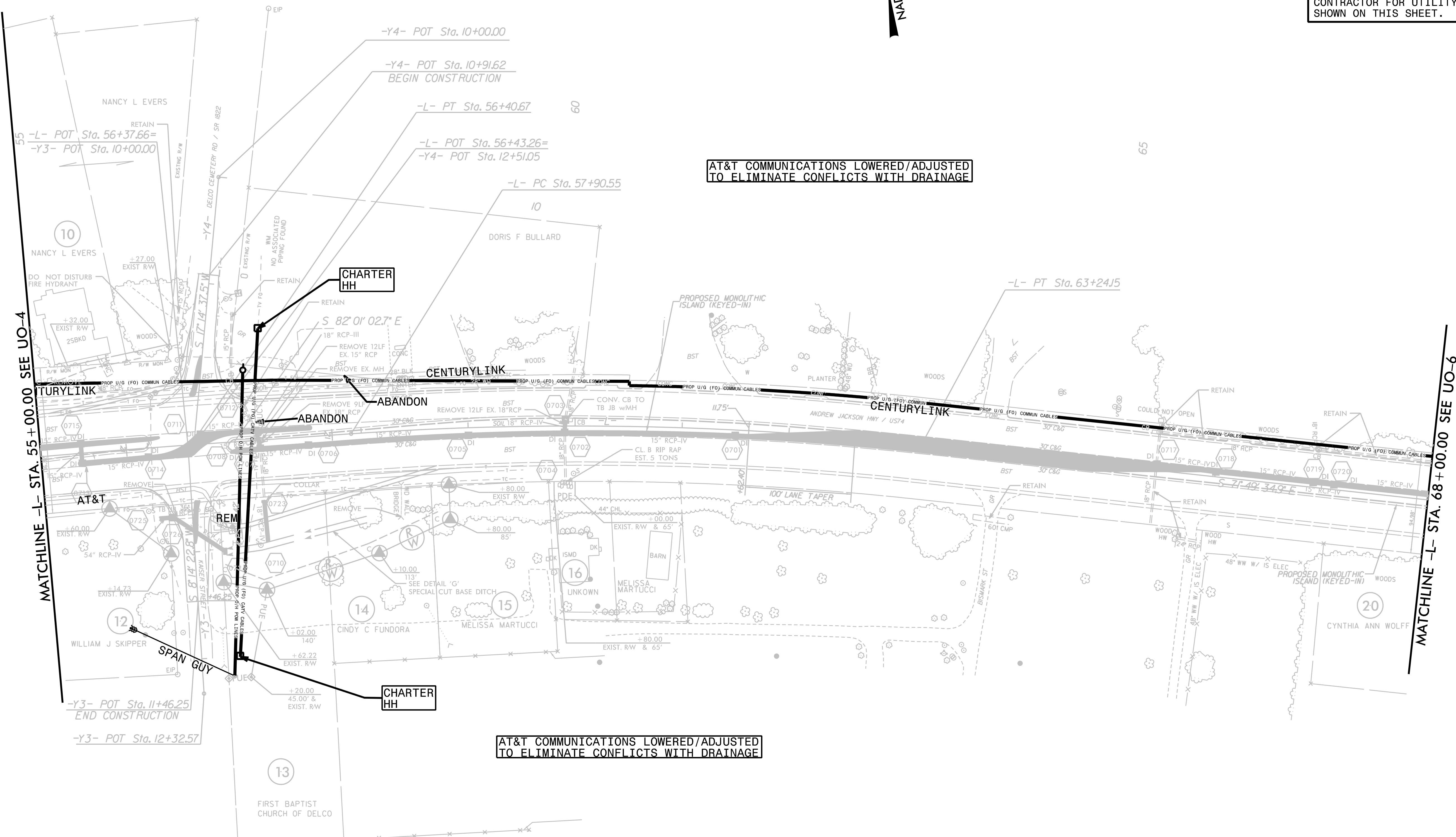
UNLESS OTHERWISE NOTED, ALL UTILITIES SHOWN ON THIS SHEET ARE TO BE LOCATED AND DEPT. BY THE CONTRACTOR. THE CONTRACTOR SHALL BE RESPONSIBLE FOR OBTAINING ALL NECESSARY PERMITS AND FOR PROTECTING ALL UTILITIES. THE CONTRACTOR SHALL BE RESPONSIBLE FOR THE PROTECTION OF ALL UTILITIES AND SHALL BE RESPONSIBLE FOR THE REPAIR OF ALL UTILITIES DAMAGED BY THE PROJECT. THE CONTRACTOR SHALL BE RESPONSIBLE FOR THE PROTECTION OF ALL UTILITIES AND SHALL BE RESPONSIBLE FOR THE REPAIR OF ALL UTILITIES DAMAGED BY THE PROJECT.

UTILITIES BY OTHERS

NOTE: ALL UTILITY WORK SHOWN ON THIS SHEET WILL BE DONE BY OTHERS. NO PAYMENT WILL BE MADE TO THE CONTRACTOR FOR UTILITY WORK SHOWN ON THIS SHEET.

8/17/99

NAD 83/2007



AT&T COMMUNICATIONS LOWERED/ADJUSTED TO ELIMINATE CONFLICTS WITH DRAINAGE

AT&T COMMUNICATIONS LOWERED/ADJUSTED TO ELIMINATE CONFLICTS WITH DRAINAGE

MATCHLINE -L- STA. 55 + 00.00 SEE UO-4

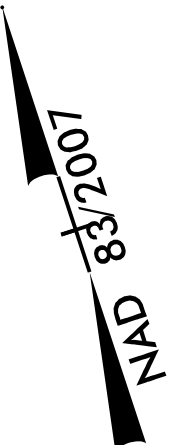
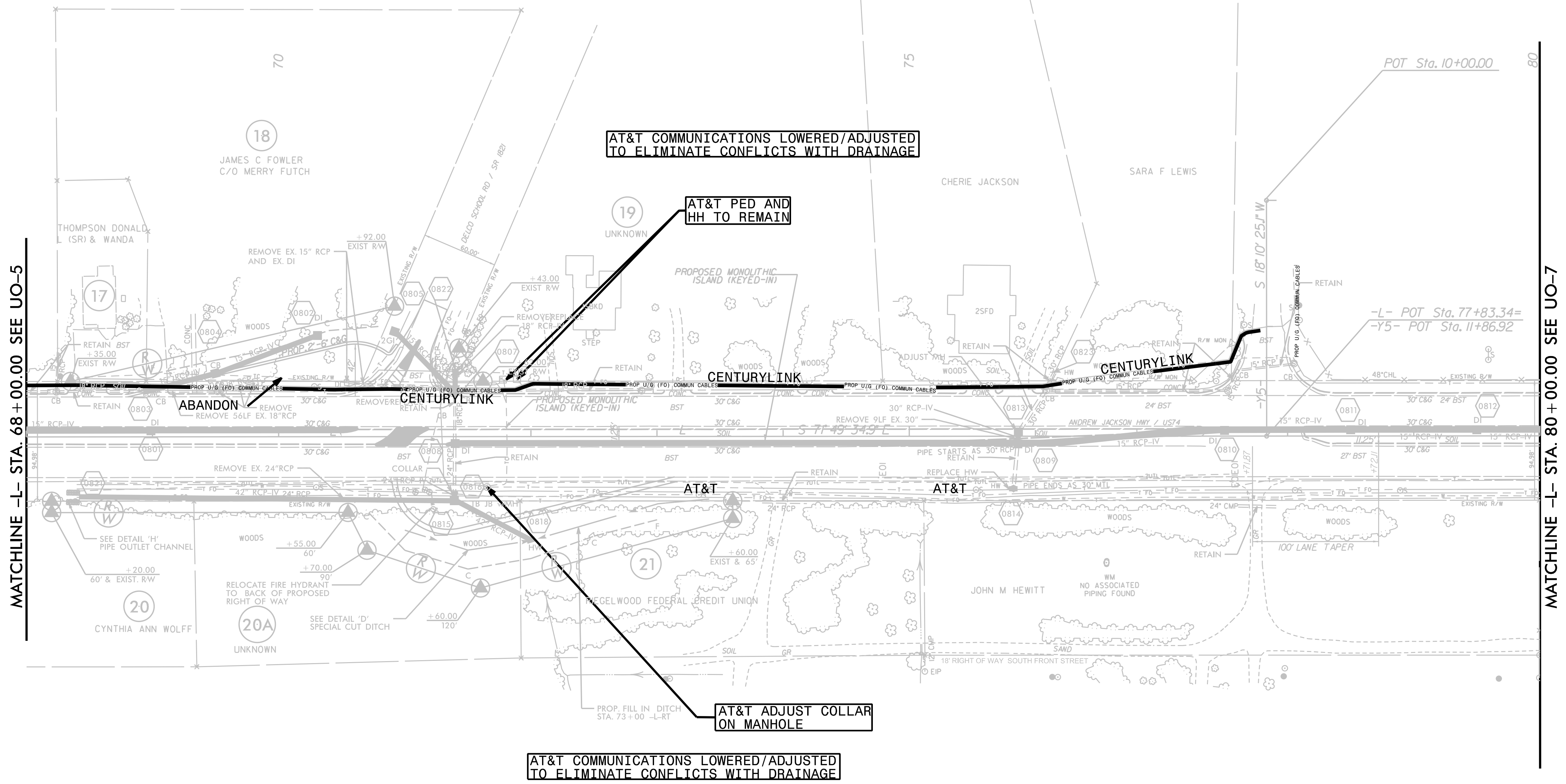
MATCHLINE -L- STA. 68 + 00.00 SEE UO-6

Vertical text along the left margin, likely a scale or legend.

UTILITIES BY OTHERS

NOTE:
 ALL UTILITY WORK SHOWN ON THIS SHEET WILL BE DONE BY OTHERS. NO PAYMENT WILL BE MADE TO THE CONTRACTOR FOR UTILITY WORK SHOWN ON THIS SHEET.

8/17/99



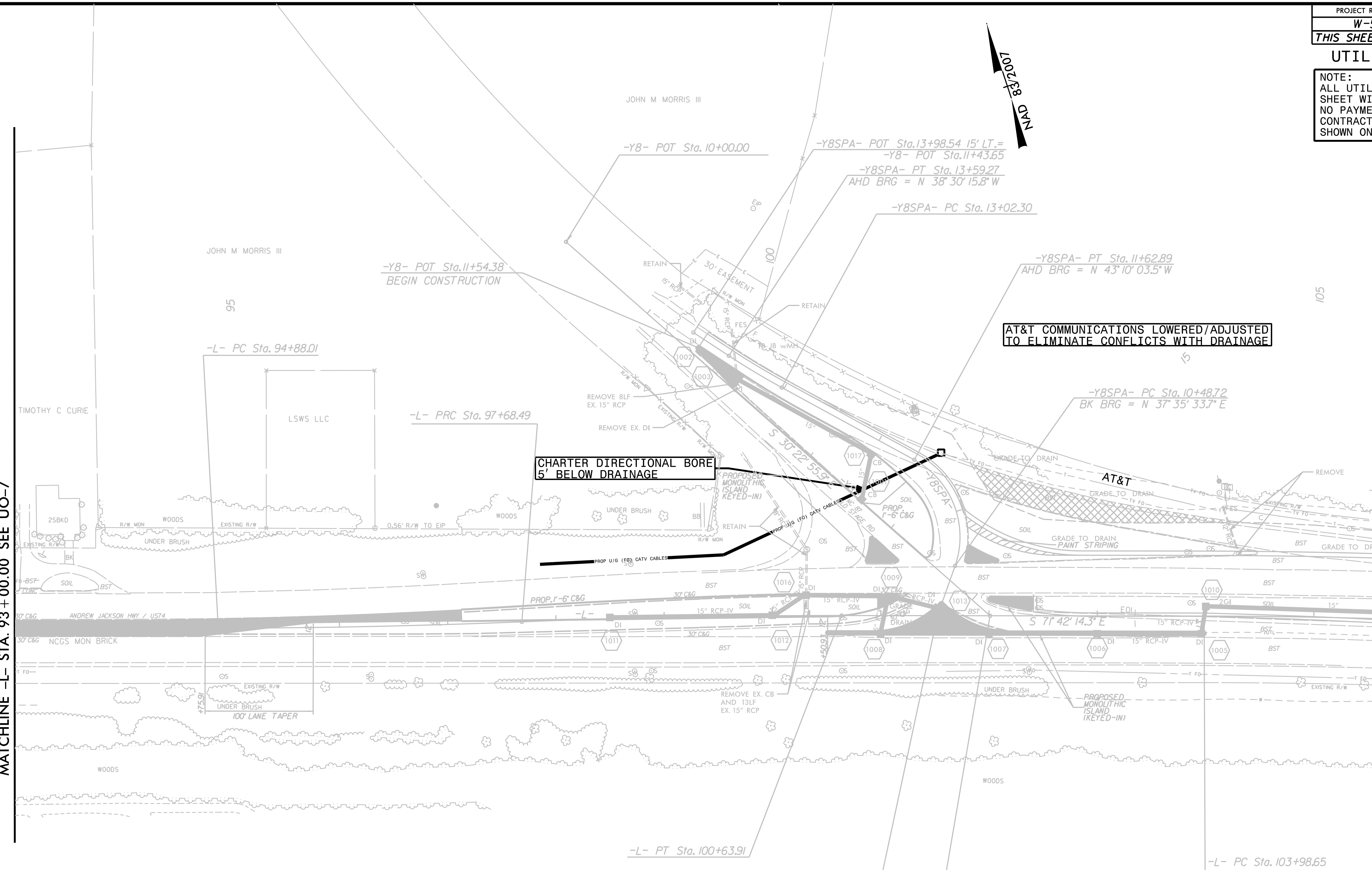
UTILITIES BY OTHERS

NOTE:
 ALL UTILITY WORK SHOWN ON THIS SHEET WILL BE DONE BY OTHERS. NO PAYMENT WILL BE MADE TO THE CONTRACTOR FOR UTILITY WORK SHOWN ON THIS SHEET.

8/17/99

MATCHLINE -L- STA. 93 + 00.00 SEE UO-7

MATCHLINE -L- STA. 106 + 00.00 SEE UO-9



AT&T COMMUNICATIONS LOWERED/ADJUSTED TO ELIMINATE CONFLICTS WITH DRAINAGE

CHARTER DIRECTIONAL BORE 5' BELOW DRAINAGE

AT&T COMMUNICATIONS LOWERED/ADJUSTED TO ELIMINATE CONFLICTS WITH DRAINAGE

-L- POT Sta. 101+52.48 =
 -Y8SPA- POT Sta. 10+00.00
 AHD BRG = N 37° 35' 33.7\"/>

-L- POT Sta. 102+01.01 =
 -Y8- POT Sta. 15+22.21

-L- PC Sta. 103+98.65

-Y8- POT Sta. 11+54.38
 BEGIN CONSTRUCTION

-L- PC Sta. 94+88.01

-L- PRC Sta. 97+68.49

-Y8SPA- PT Sta. 11+62.89
 AHD BRG = N 43° 10' 03.5\"/>

-Y8SPA- PC Sta. 10+48.72
 BK BRG = N 37° 35' 33.7\"/>

-L- PT Sta. 100+63.91

TIMOTHY C CURIE

JOHN M MORRIS III

JOHN M MORRIS III

LSWS LLC

2SBKD

BSF

ANDREW JACKSON HWY / US4

NCGS MON BRICK

100' LANE TAPER

WOODS

WOODS

PROPOSED MONOLITHIC ISLAND (KEYED-IN)

AT&T

PROP U/G (EO) CATV CABLES

PROP 1'-6\"/>

15\"/>

15\"/>

REMOVE EX. CB AND 13LF EX. 15\"/>

REMOVE EX. DI

REMOVE 8LF EX. 15\"/>

REMOVE EX. DI

REMOVE EX. DI

REMOVE EX. DI

REMOVE EX. DI

REMOVE EX. DI

REMOVE EX. DI

REMOVE EX. DI

REMOVE EX. DI

REMOVE EX. DI

REMOVE EX. DI

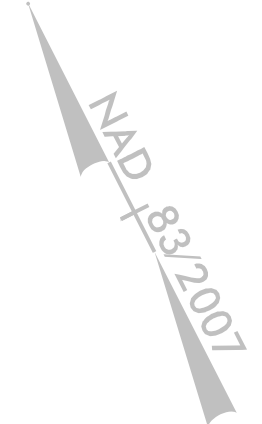
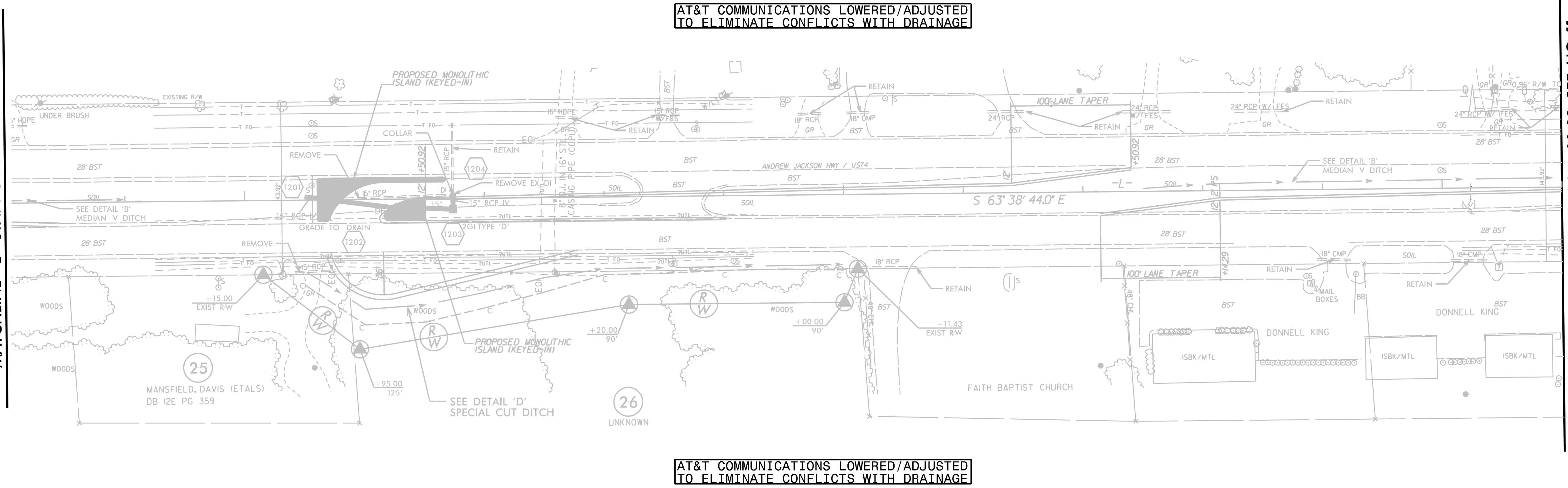
UTILITIES BY OTHERS

NOTE:
 ALL UTILITY WORK SHOWN ON THIS SHEET WILL BE DONE BY OTHERS. NO PAYMENT WILL BE MADE TO THE CONTRACTOR FOR UTILITY WORK SHOWN ON THIS SHEET.

8/17/99

MATCHLINE -L- STA. 118 +00.00 SEE UO-9

MATCHLINE -L- STA. 131 +00.00 SEE UO-11



120

125

130

AT&T COMMUNICATIONS LOWERED/ADJUSTED TO ELIMINATE CONFLICTS WITH DRAINAGE

AT&T COMMUNICATIONS LOWERED/ADJUSTED TO ELIMINATE CONFLICTS WITH DRAINAGE

25
 MANSFIELD, DAVIS (ETALS)
 DB 12E PG 359

26
 UNKNOWN

FAITH BAPTIST CHURCH

ISBK/MTL

ISBK/MTL

ISBK/MTL

DONNELL KING

DONNELL KING

DONNELL KING

MAIL BOXES

S 63° 38' 44.0" E

ANDREW JACKSON HWY / US74

PROPOSED MONOLITHIC ISLAND (KEYED-IN)

PROPOSED MONOLITHIC ISLAND (KEYED-IN)

SEE DETAIL 'D' SPECIAL CUT DITCH

SEE DETAIL 'B' MEDIAN V DITCH

SEE DETAIL 'B' MEDIAN V DITCH

1" HDPE

UNDER BRUSH

28' BST

28' BST

WOODS

WOODS

COLLAR

REMOVE

REMOVE

REMOVE

REMOVE

REMOVE

REMOVE

REMOVE

REMOVE

REMOVE

REMOVE

REMOVE

REMOVE

REMOVE

REMOVE

REMOVE

REMOVE

REMOVE

REMOVE

REMOVE

REMOVE

REMOVE

REMOVE

REMOVE

REMOVE

REMOVE

REMOVE

REMOVE

REMOVE

REMOVE

REMOVE

REMOVE

REMOVE

REMOVE

REMOVE

REMOVE

REMOVE

REMOVE

REMOVE

REMOVE

REMOVE

REMOVE

REMOVE

REMOVE

REMOVE

REMOVE

REMOVE

REMOVE

REMOVE

REMOVE

REMOVE

REMOVE

REMOVE

REMOVE

REMOVE

REMOVE

REMOVE

REMOVE

REMOVE

REMOVE

REMOVE

REMOVE

REMOVE

REMOVE

REMOVE

REMOVE

REMOVE

REMOVE

REMOVE

REMOVE

REMOVE

REMOVE

REMOVE

REMOVE

REMOVE

REMOVE

REMOVE

REMOVE

REMOVE

REMOVE

REMOVE

REMOVE

REMOVE

REMOVE

REMOVE

REMOVE

REMOVE

REMOVE

REMOVE

REMOVE

REMOVE

REMOVE

REMOVE

REMOVE

REMOVE

REMOVE

REMOVE

REMOVE

REMOVE

REMOVE

REMOVE

REMOVE

REMOVE

REMOVE

REMOVE

REMOVE

REMOVE

REMOVE

REMOVE

REMOVE

REMOVE

REMOVE

REMOVE

REMOVE

REMOVE

REMOVE

REMOVE

REMOVE

REMOVE

REMOVE

REMOVE

REMOVE

REMOVE

REMOVE

REMOVE

REMOVE

REMOVE

REMOVE

REMOVE

REMOVE

REMOVE

REMOVE

REMOVE

REMOVE

REMOVE

REMOVE

REMOVE

REMOVE

REMOVE

REMOVE

REMOVE

REMOVE

REMOVE

REMOVE

REMOVE

REMOVE

REMOVE

REMOVE

REMOVE

REMOVE

REMOVE

REMOVE

REMOVE

REMOVE

REMOVE

REMOVE

REMOVE

REMOVE

REMOVE

REMOVE

REMOVE

REMOVE

REMOVE

REMOVE

REMOVE

REMOVE

REMOVE

REMOVE

REMOVE

REMOVE

REMOVE

REMOVE

REMOVE

REMOVE

REMOVE

REMOVE

REMOVE

REMOVE

REMOVE

REMOVE

REMOVE

REMOVE

REMOVE

REMOVE

REMOVE

REMOVE

REMOVE

REMOVE

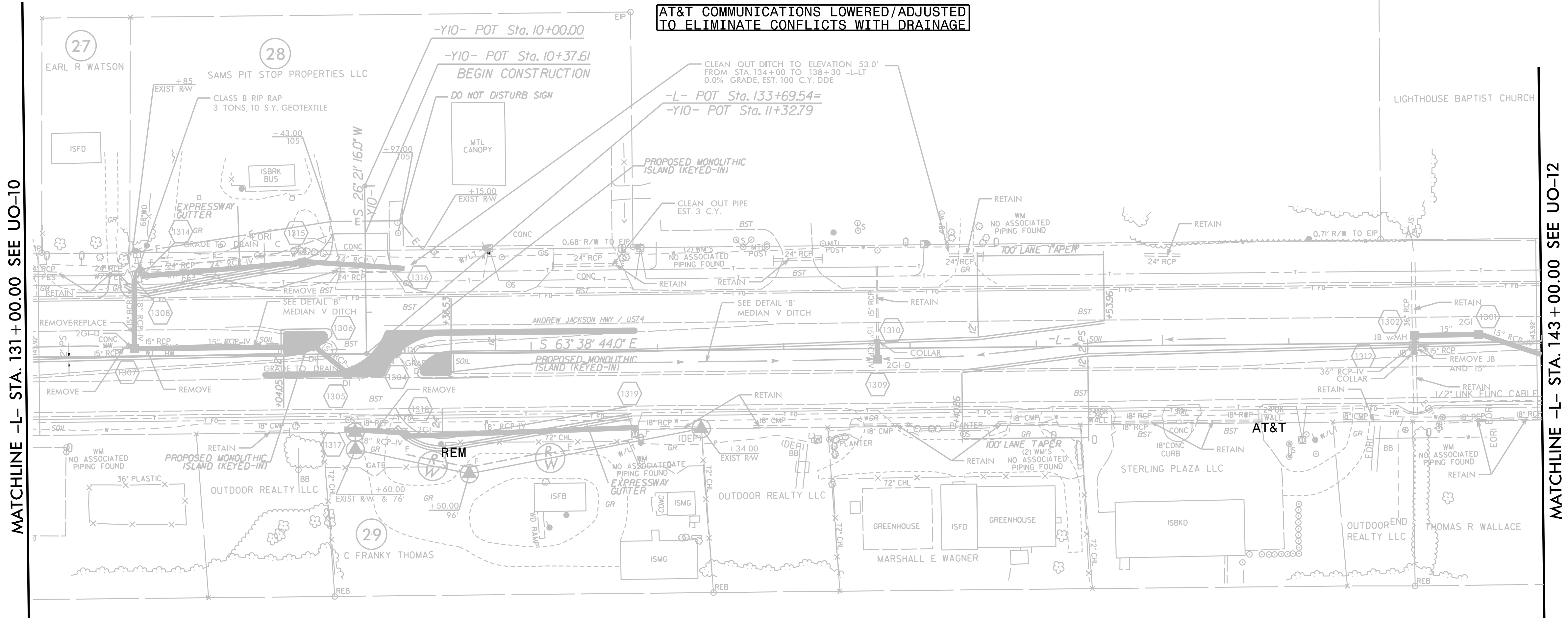
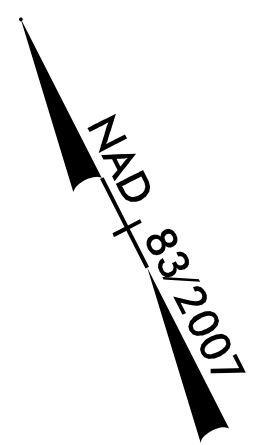
REMOVE

REMOVE

REMOVE

UTILITIES BY OTHERS

NOTE:
 ALL UTILITY WORK SHOWN ON THIS SHEET WILL BE DONE BY OTHERS. NO PAYMENT WILL BE MADE TO THE CONTRACTOR FOR UTILITY WORK SHOWN ON THIS SHEET.



MATCHLINE -L- STA. 131+00.00 SEE UO-10

MATCHLINE -L- STA. 143+00.00 SEE UO-12

AT&T COMMUNICATIONS LOWERED/ADJUSTED
 TO ELIMINATE CONFLICTS WITH DRAINAGE

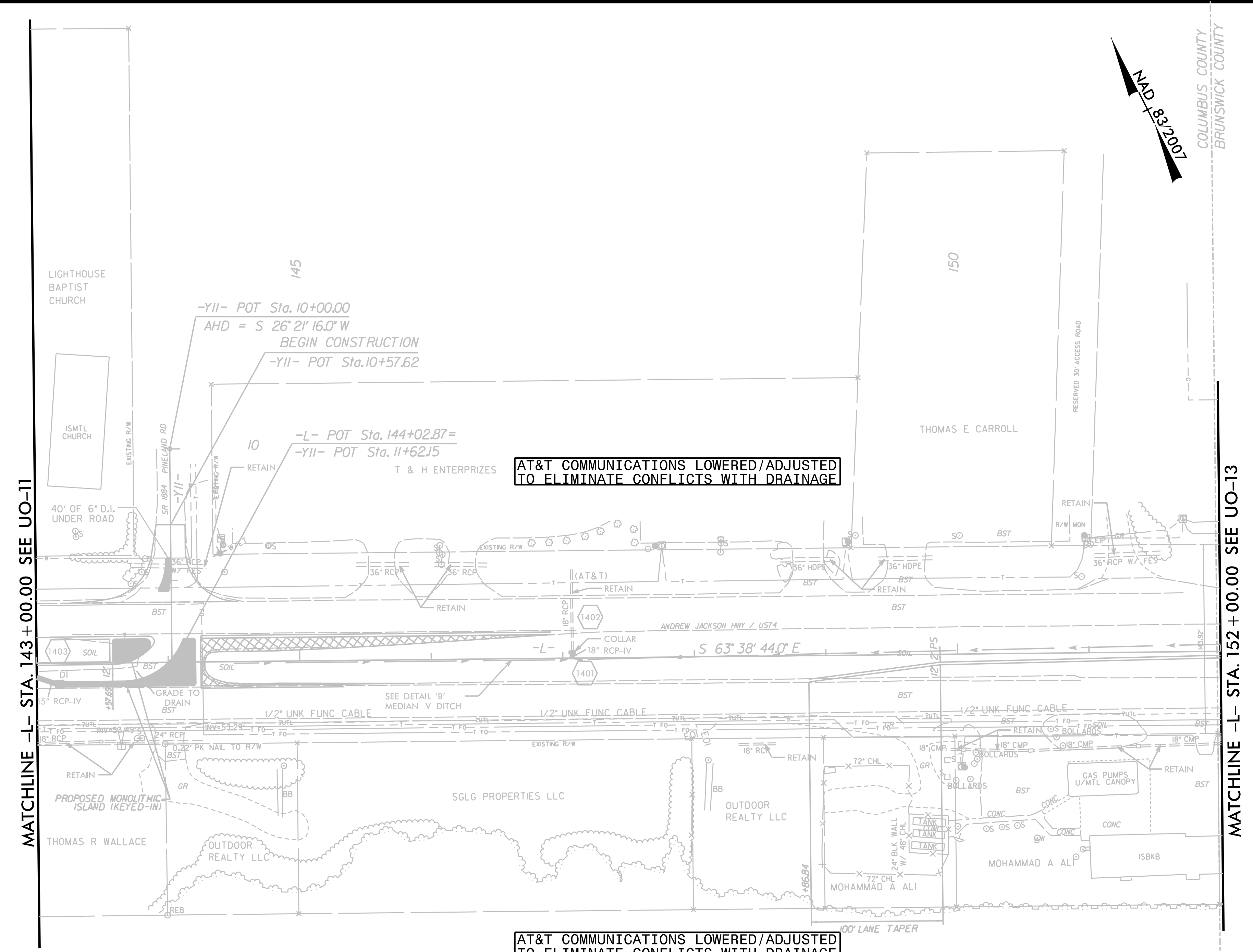
AT&T COMMUNICATIONS LOWERED/ADJUSTED
 TO ELIMINATE CONFLICTS WITH DRAINAGE

UNLESS OTHERWISE NOTED, ALL UTILITIES SHOWN ON THIS SHEET ARE THE PROPERTY OF THE CITY OF WASHINGTON AND ARE TO BE MAINTAINED BY THE CITY OF WASHINGTON. THE CONTRACTOR SHALL BE RESPONSIBLE FOR VERIFYING THE LOCATION AND DEPTH OF ALL UTILITIES SHOWN ON THIS SHEET PRIOR TO CONSTRUCTION. THE CONTRACTOR SHALL BE RESPONSIBLE FOR OBTAINING ALL NECESSARY PERMITS FROM THE CITY OF WASHINGTON AND ANY OTHER AGENCIES. THE CONTRACTOR SHALL BE RESPONSIBLE FOR PROTECTING ALL UTILITIES NOT SHOWN ON THIS SHEET. THE CONTRACTOR SHALL BE RESPONSIBLE FOR RESTORING ALL UTILITIES TO ORIGINAL OR BETTER CONDITION AFTER CONSTRUCTION IS COMPLETE. THE CONTRACTOR SHALL BE RESPONSIBLE FOR MAINTAINING ALL UTILITIES IN ACCORDANCE WITH ALL APPLICABLE REGULATIONS AND STANDARDS. THE CONTRACTOR SHALL BE RESPONSIBLE FOR NOTIFYING THE CITY OF WASHINGTON OF ANY UTILITIES DAMAGED OR DISCOVERED DURING CONSTRUCTION. THE CONTRACTOR SHALL BE RESPONSIBLE FOR PROVIDING ALL NECESSARY RECORD DRAWINGS AND AS-BUILT DRAWINGS TO THE CITY OF WASHINGTON. THE CONTRACTOR SHALL BE RESPONSIBLE FOR OBTAINING ALL NECESSARY PERMITS FROM THE CITY OF WASHINGTON AND ANY OTHER AGENCIES. THE CONTRACTOR SHALL BE RESPONSIBLE FOR PROTECTING ALL UTILITIES NOT SHOWN ON THIS SHEET. THE CONTRACTOR SHALL BE RESPONSIBLE FOR RESTORING ALL UTILITIES TO ORIGINAL OR BETTER CONDITION AFTER CONSTRUCTION IS COMPLETE. THE CONTRACTOR SHALL BE RESPONSIBLE FOR MAINTAINING ALL UTILITIES IN ACCORDANCE WITH ALL APPLICABLE REGULATIONS AND STANDARDS. THE CONTRACTOR SHALL BE RESPONSIBLE FOR NOTIFYING THE CITY OF WASHINGTON OF ANY UTILITIES DAMAGED OR DISCOVERED DURING CONSTRUCTION. THE CONTRACTOR SHALL BE RESPONSIBLE FOR PROVIDING ALL NECESSARY RECORD DRAWINGS AND AS-BUILT DRAWINGS TO THE CITY OF WASHINGTON.

UTILITIES BY OTHERS

NOTE:
 ALL UTILITY WORK SHOWN ON THIS SHEET WILL BE DONE BY OTHERS. NO PAYMENT WILL BE MADE TO THE CONTRACTOR FOR UTILITY WORK SHOWN ON THIS SHEET.

8.17/99

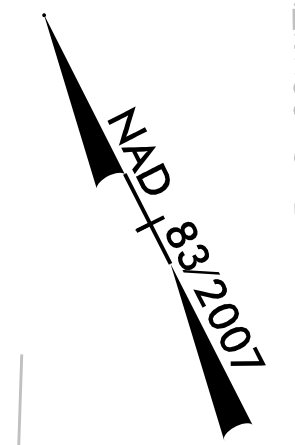


MATCHLINE -L- STA. 143 + 00.00 SEE UO-11

MATCHLINE -L- STA. 152 + 00.00 SEE UO-13

AT&T COMMUNICATIONS LOWERED/ADJUSTED TO ELIMINATE CONFLICTS WITH DRAINAGE

AT&T COMMUNICATIONS LOWERED/ADJUSTED TO ELIMINATE CONFLICTS WITH DRAINAGE



COLUMBUS COUNTY
BRUNSWICK COUNTY

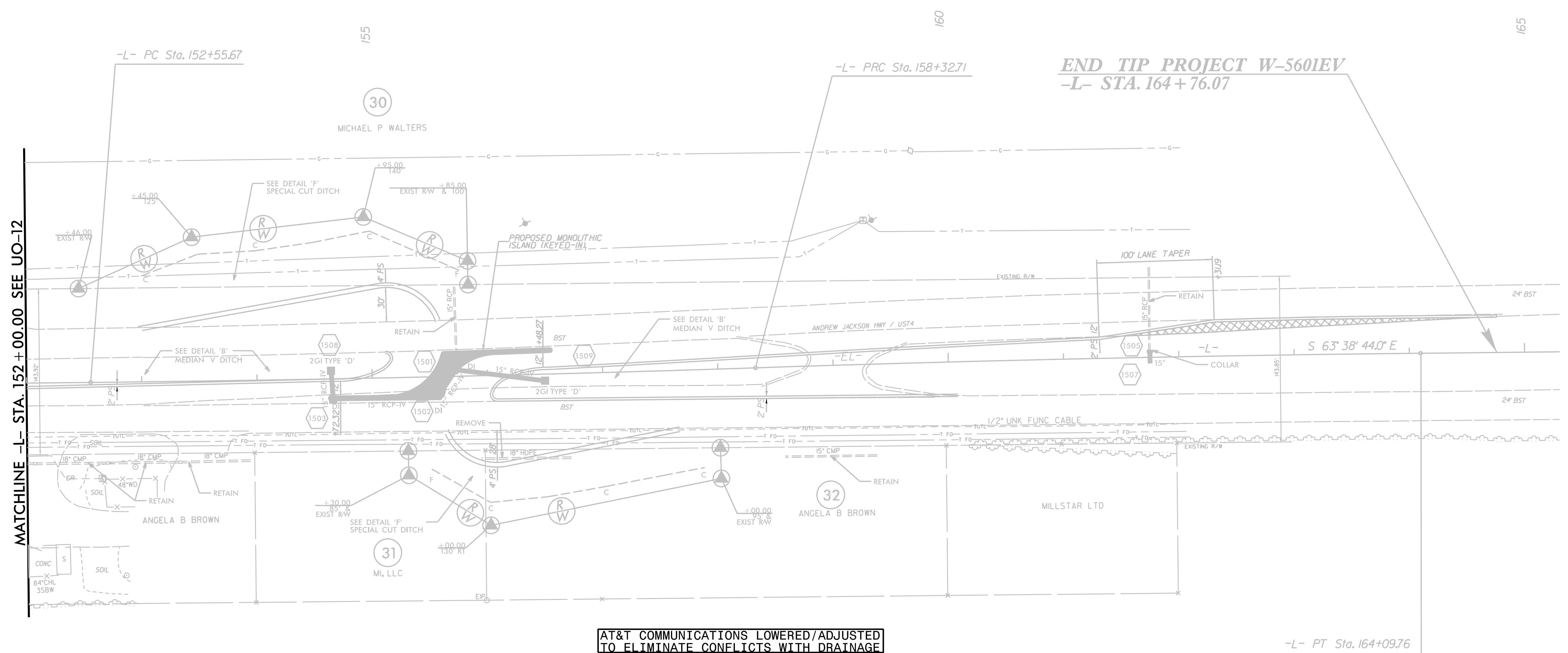
UTILITIES BY OTHERS

NOTE:
 ALL UTILITY WORK SHOWN ON THIS SHEET WILL BE DONE BY OTHERS. NO PAYMENT WILL BE MADE TO THE CONTRACTOR FOR UTILITY WORK SHOWN ON THIS SHEET.

AT&T COMMUNICATIONS LOWERED/ADJUSTED TO ELIMINATE CONFLICTS WITH DRAINAGE

AT&T COMMUNICATIONS LOWERED/ADJUSTED TO ELIMINATE CONFLICTS WITH DRAINAGE

END TIP PROJECT W-5601EV
 -L- STA. 164+76.07



8.17/99

8.17/99