

8/17/99

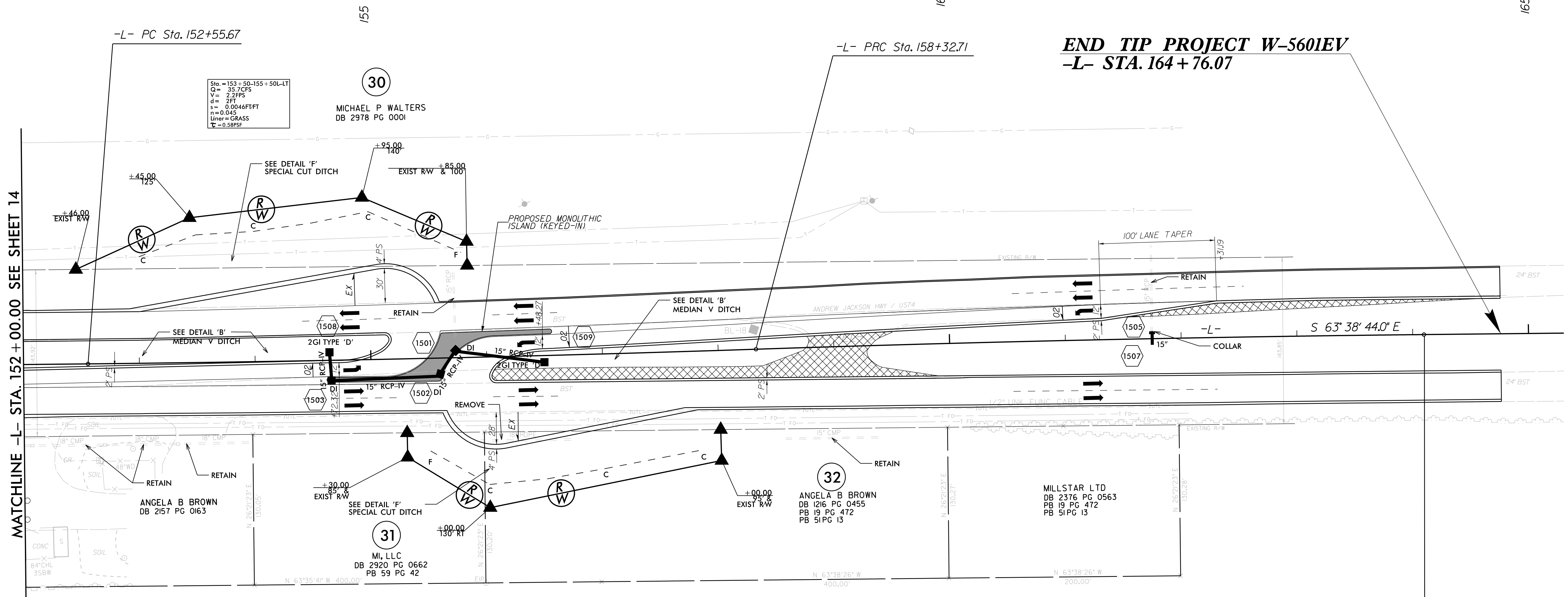


PROJECT REFERENCE NO. <b>W-5601EV</b>	SHEET NO. <b>15</b>
R/W SHEET NO.	
ROADWAY DESIGN ENGINEER	HYDRAULICS ENGINEER
5/29/2018	5/29/2018

Stantec Consulting Services Inc.  
801 Jones Franklin Road  
Suite 300  
Raleigh, NC 27606  
Tel. (919) 851-6866  
Fax. (919) 851-7024  
www.stantec.com  
License No. F-0672

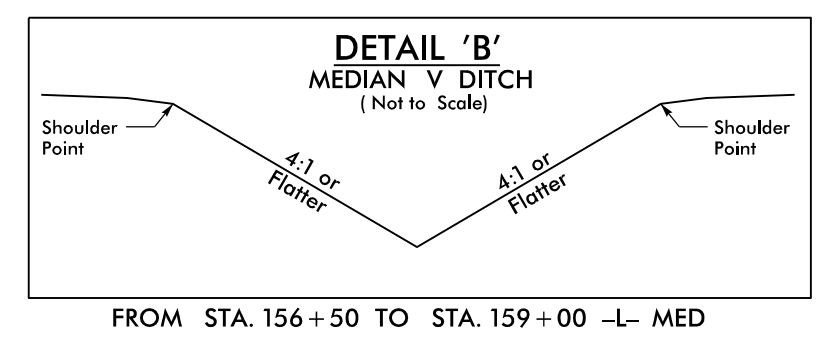
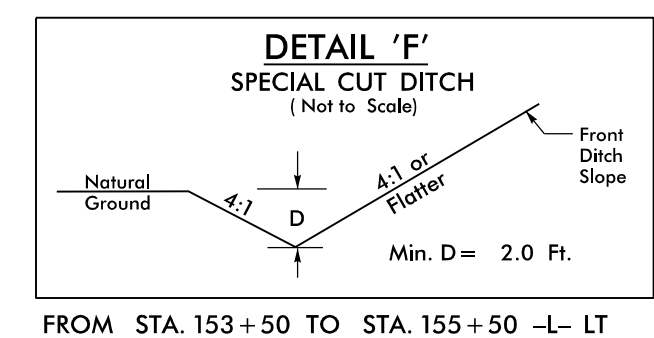
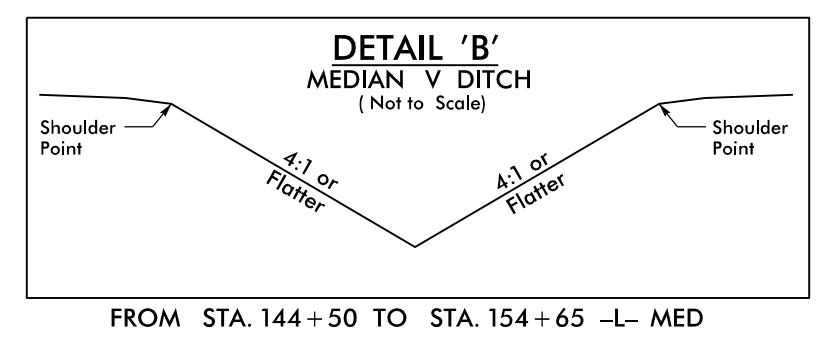
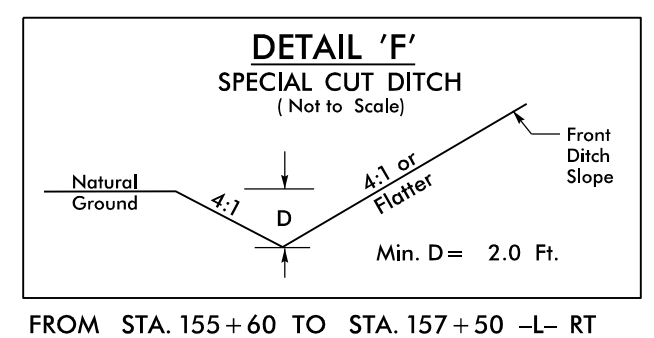
-L-	
PI Sta 155+44.20 $\Delta = 1' 19' 21.0"$ (LT) $D = 0' 13' 45.1"$ $L = 577.04'$ $T = 288.54'$ $R = 25,000.00'$	PI Sta 161+21.25 $\Delta = 1' 19' 21.0"$ (RT) $D = 0' 13' 45.1"$ $L = 577.04'$ $T = 288.54'$ $R = 25,000.00'$

**END TIP PROJECT W-5601EV**  
**-L- STA. 164+76.07**



MATCHLINE -L- STA. 152+00.00 SEE SHEET 14

REVISIONS



PLACE BLOCKOUT PER RSD 904.50 SHEET 2 OF 2 IN 2' CONCRETE ISLAND FOR SIGNS SHOWN ON SIGNING PLANS OR DIRECTED BY THE ENGINEER.

NOTE:  
SEE SHEET 2B-5 FOR INTERSECTION DETAIL  
SEE SHEET 21 FOR -L- PROFILE

5/29/2018  
U:\Roadway\Pro\W5601EV.rdj\_psh15.dgn  
-chao