

8/17/99



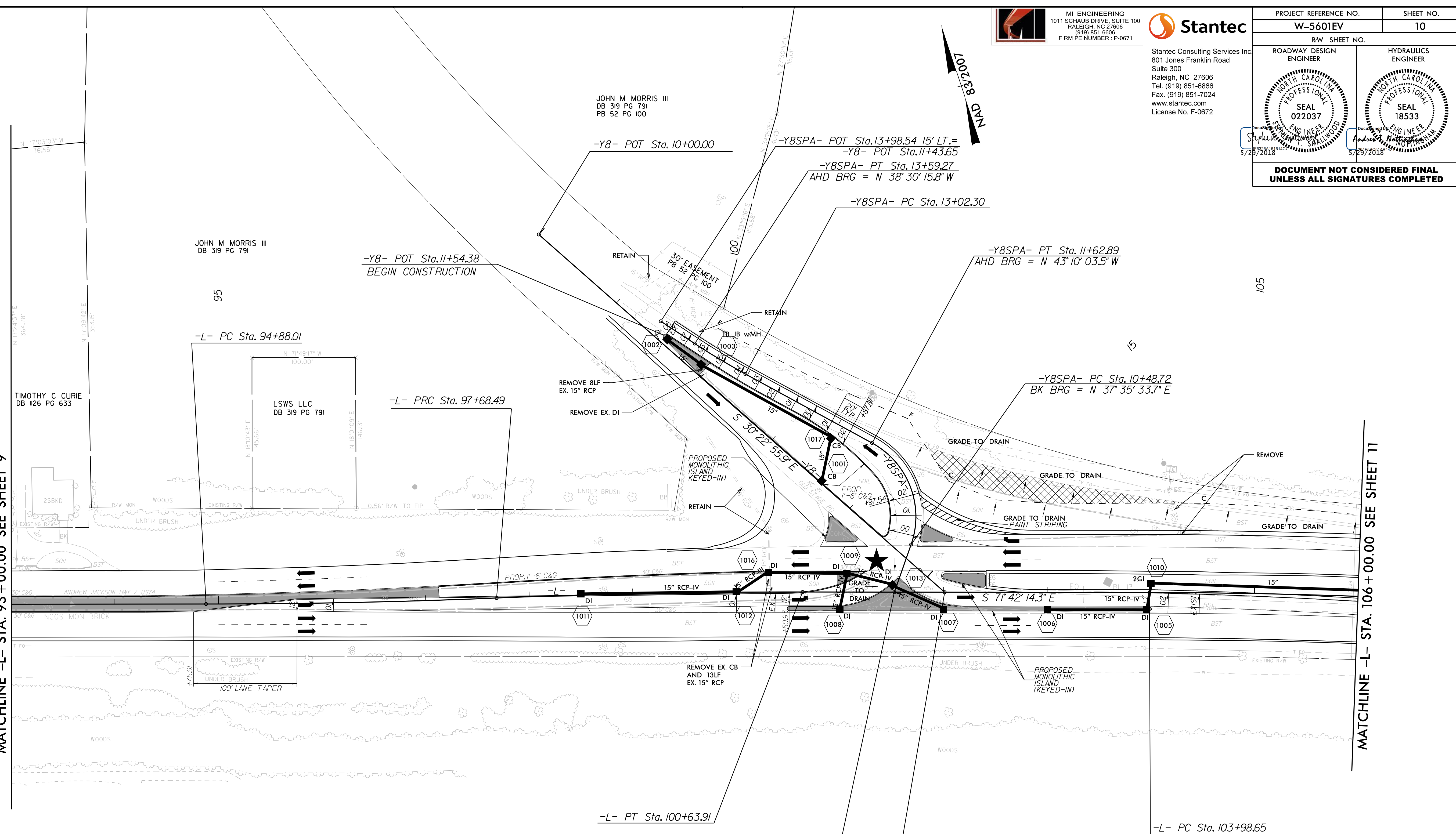
PROJECT REFERENCE NO. <b>W-5601EV</b>		SHEET NO. <b>10</b>	
RW SHEET NO.		HYDRAULICS ENGINEER	
ROADWAY DESIGN ENGINEER		HYDRAULICS ENGINEER	
<b>DOCUMENT NOT CONSIDERED FINAL UNLESS ALL SIGNATURES COMPLETED</b>			

Stantec Consulting Services Inc.  
801 Jones Franklin Road  
Suite 300  
Raleigh, NC 27606  
Tel. (919) 851-6866  
Fax. (919) 851-7024  
www.stantec.com  
License No. F-0672

REVISIONS

MATCHLINE -L- STA. 93+00.00 SEE SHEET 9

MATCHLINE -L- STA. 106+00.00 SEE SHEET 11



-Y8SPA-		-L-		-L-	
PI Sta 13+30.80 Δ = 4° 39' 47.7" (RT) D = 8' 11' 06.4" L = 56.97' T = 28.50' R = 700.00'	PI Sta 11+17.61 Δ = 80° 45' 37.2" (LT) D = 70' 44' 07.9" L = 114.17' T = 68.89' R = 81.00'	PI Sta 96+28.27 Δ = 2° 17' 44.6" (LT) D = 0' 49' 06.6" L = 280.47' T = 140.26' R = 7,000.00'	PI Sta 99+16.22 Δ = 2° 25' 05.1" (RT) D = 0' 49' 06.6" L = 295.43' T = 147.73' R = 7,000.00'	PI Sta 108+14.24 Δ = 8° 03' 30.3" (RT) D = 0' 58' 16.0" L = 829.81' T = 415.59' R = 5,900.00'	

★ PROPOSED SIGNAL

PLACE BLOCKOUT PER RSD 904.50 SHEET 2 OF 2  
IN 2' CONCRETE ISLAND FOR SIGNS SHOWN ON  
SIGNING PLANS OR DIRECTED BY THE ENGINEER.

NOTE:  
SEE SHEET 2B-3 FOR INTERSECTION DETAIL  
SEE SHEET 18 & 19 FOR -L- PROFILE  
SEE SHEET 22 FOR -Y8SPA- PROFILE

5/29/2018  
U:\Roadway\Pro\W5601EV.rcdj\_psh10.dgn  
-chao