

8/17/99

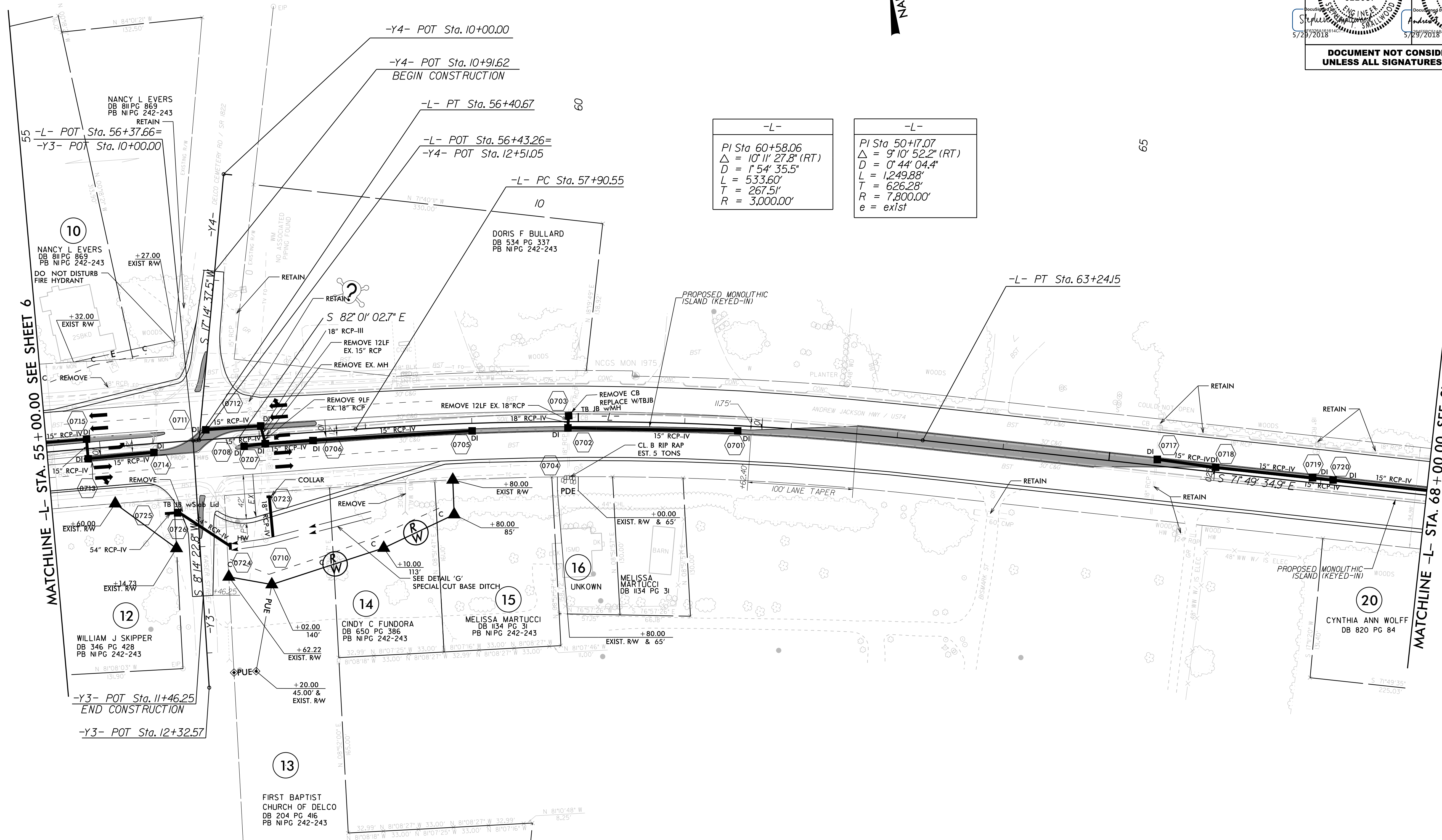


Stantec Consulting Services Inc.  
801 Jones Franklin Road  
Suite 300  
Raleigh, NC 27606  
Tel. (919) 851-6866  
Fax. (919) 851-7024  
www.stantec.com  
License No. F-0672

PROJECT REFERENCE NO. <b>W-5601EV</b>		SHEET NO. <b>7</b>	
RW SHEET NO.		HYDRAULICS ENGINEER	
ROADWAY DESIGN ENGINEER		SEAL 18533	
<b>DOCUMENT NOT CONSIDERED FINAL UNLESS ALL SIGNATURES COMPLETED</b>			

REVISIONS

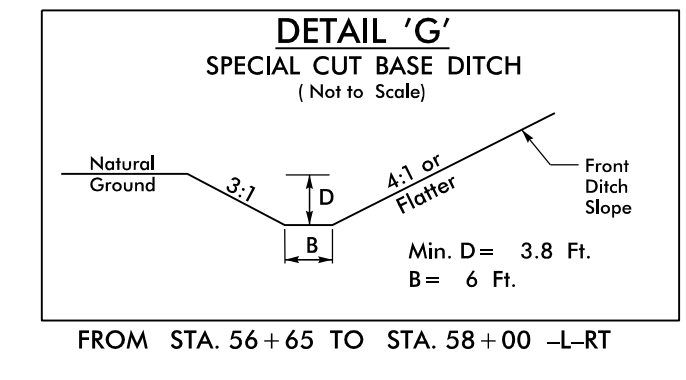
NAD 83/2007



-L-	-L-
PI Sta 60+58.06 Δ = 10' 11" 27.8" (RT) D = 1' 54' 35.5" L = 533.60' T = 267.51' R = 3,000.00'	PI Sta 50+17.07 Δ = 9' 10' 52.2" (RT) D = 0' 44' 04.4" L = 1,249.88' T = 626.28' R = 7,800.00' e = exist

MATCHLINE -L- STA. 55 + 00.00 SEE SHEET 6

MATCHLINE -L- STA. 68 + 00.00 SEE SHEET 8



PLACE BLOCKOUT PER RSD 904.50 SHEET 2 OF 2 IN 2' CONCRETE ISLAND FOR SIGNS SHOWN ON SIGNING PLANS OR DIRECTED BY THE ENGINEER.

NOTE:  
SEE SHEET 2B-2 FOR INTERSECTION DETAIL  
SEE SHEET 17 FOR -L- PROFILE

5/29/2018  
J:\Roadway\Proj\W5601EV.rdj\_psh07.dgn