

8/17/99

MI ENGINEERING
1011 SCHAUH DRIVE, SUITE 100
RALEIGH, NC 27606
(919) 851-6606
FIRM PE NUMBER - P-0671

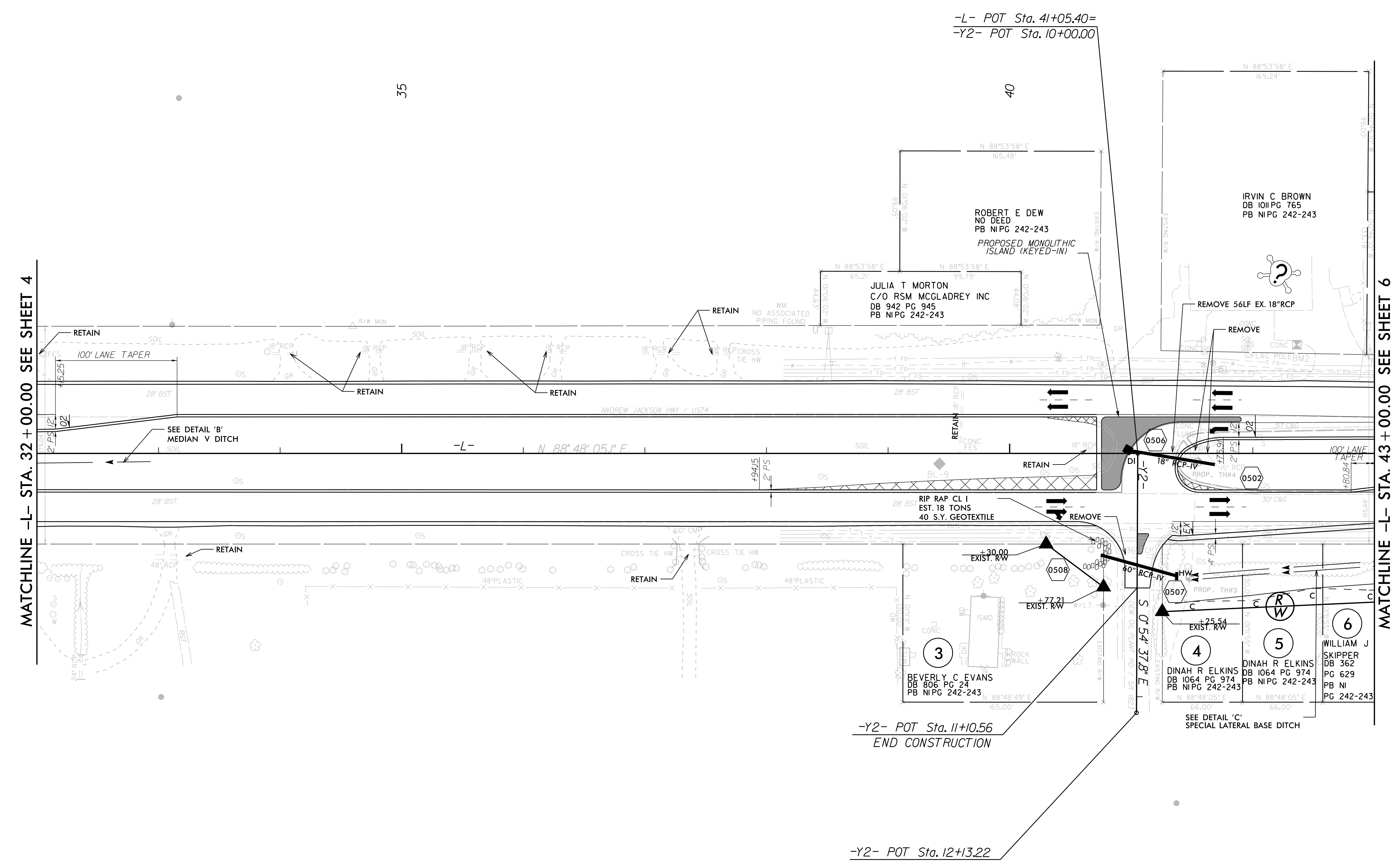


Stantec Consulting Services Inc.
801 Jones Franklin Road
Suite 300
Raleigh, NC 27606
Tel. (919) 851-6866
Fax. (919) 851-7024
www.stantec.com
License No. F-0672

| | | | |
|--|--|-----------------------------|--|
| PROJECT REFERENCE NO. W-5601EV | | SHEET NO. 5 | |
| RW SHEET NO. | | HYDRAULICS ENGINEER | |
| ROADWAY DESIGN ENGINEER | | HYDRAULICS ENGINEER | |
| SEAL 022037 5/29/2018 | | SEAL 18533 5/29/2018 | |
| DOCUMENT NOT CONSIDERED FINAL UNLESS ALL SIGNATURES COMPLETED | | | |

REVISIONS

NAD 83/2007



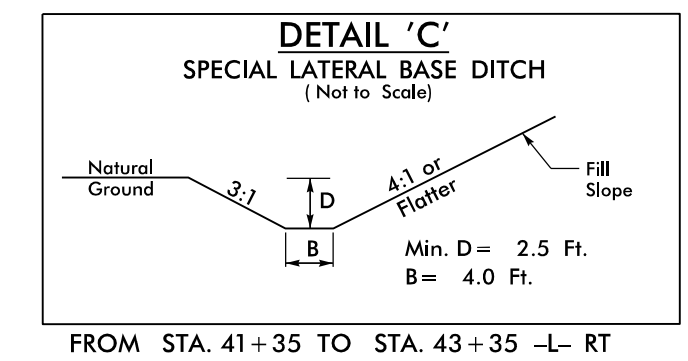
MATCHLINE -L- STA. 32 + 00.00 SEE SHEET 4

MATCHLINE -L- STA. 43 + 00.00 SEE SHEET 6

-L- POT Sta. 41+05.40=
-Y2- POT Sta. 10+00.00

-Y2- POT Sta. 11+10.56
END CONSTRUCTION

-Y2- POT Sta. 12+13.22



PLACE BLOCKOUT PER RSD 904.50 SHEET 2 OF 2
IN 2' CONCRETE ISLAND FOR SIGNS SHOWN ON
SIGNING PLANS OR DIRECTED BY THE ENGINEER.

NOTE:
SEE SHEET 2B-1 FOR INTERSECTION DETAIL
SEE SHEET 16 & 17 FOR -L- PROFILE

5/29/2018
U:\Roadway\Pro\W5601EV.rdj_psh05.dgn
-chao