

8/17/99

MI ENGINEERING
1011 SCHUBB DRIVE, SUITE 100
RALEIGH, NC 27606
(919) 851-6866
FIRM FE NUMBER: F-0671



Stantec Consulting Services Inc.
801 Jones Franklin Road
Suite 300
Raleigh, NC 27606
Tel. (919) 851-6866
Fax. (919) 851-7024
www.stantec.com
License No. F-0672

PROJECT REFERENCE NO. W-5601EV	SHEET NO. 4
ROADWAY DESIGN ENGINEER SEAL 022037	HYDRAULICS ENGINEER SEAL 18533

DOCUMENT NOT CONSIDERED FINAL
UNLESS ALL SIGNATURES COMPLETED

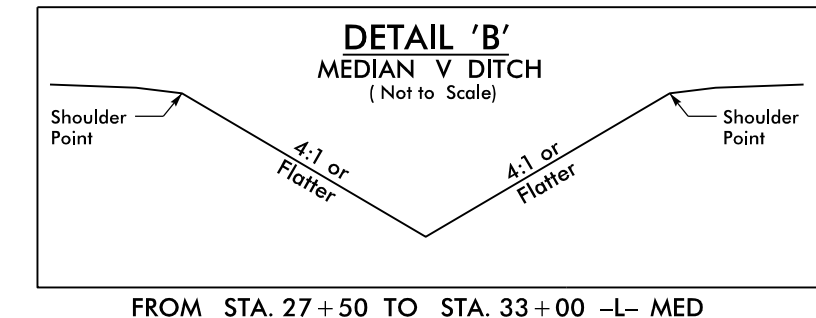
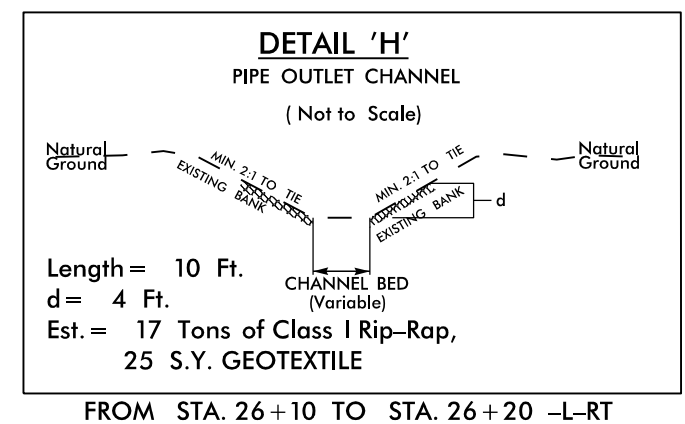
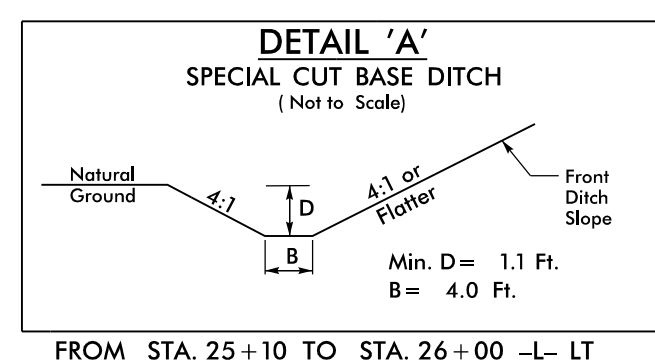
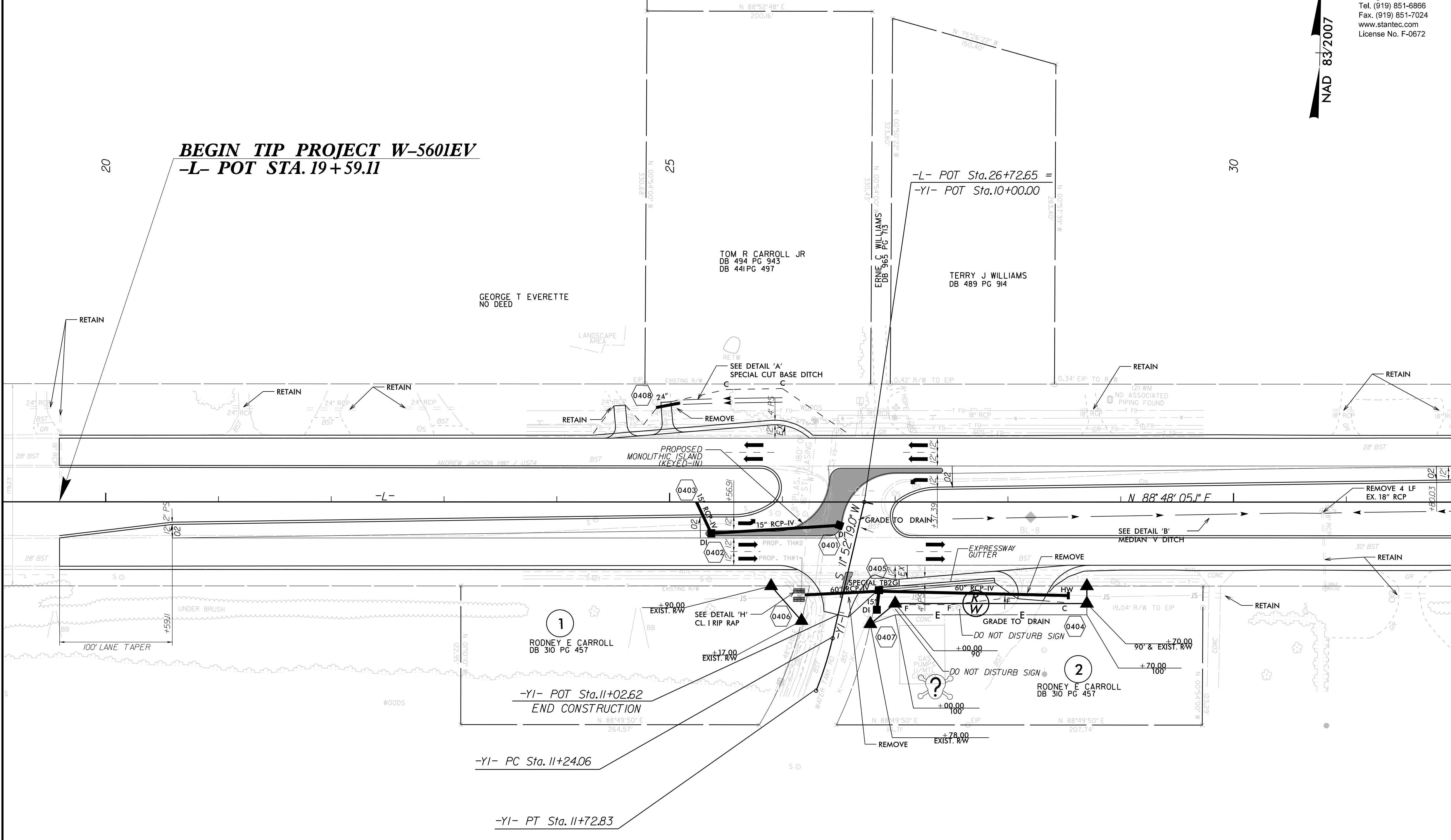
NAD 83/2007

BEGIN TIP PROJECT W-5601EV
-L- POT STA. 19+59.11

-L- POT Sta. 26+72.65 =
-YI- POT Sta. 10+00.00

REVISIONS

MATCHLINE -L- STA. 32+00.00 SEE SHEET 5



-YI-

PI Sta 11+48.49
 $\Delta = 8' 53'' 54.0''$ (RT)
 $D = 18' 14'' 49.4''$
 $L = 48.77'$
 $T = 24.43'$
 $R = 314.00'$

PLACE BLOCKOUT PER RSD 904.50 SHEET 2 OF 2
IN 2' CONCRETE ISLAND FOR SIGNS SHOWN ON
SIGNING PLANS OR DIRECTED BY THE ENGINEER.

NOTE:
SEE SHEET 2B-1 FOR INTERSECTION DETAIL
SEE SHEET 16 FOR -L- PROFILE

5/29/2018
U:\Roadway\Pro\W5601EV_rdy_psh04.dgn