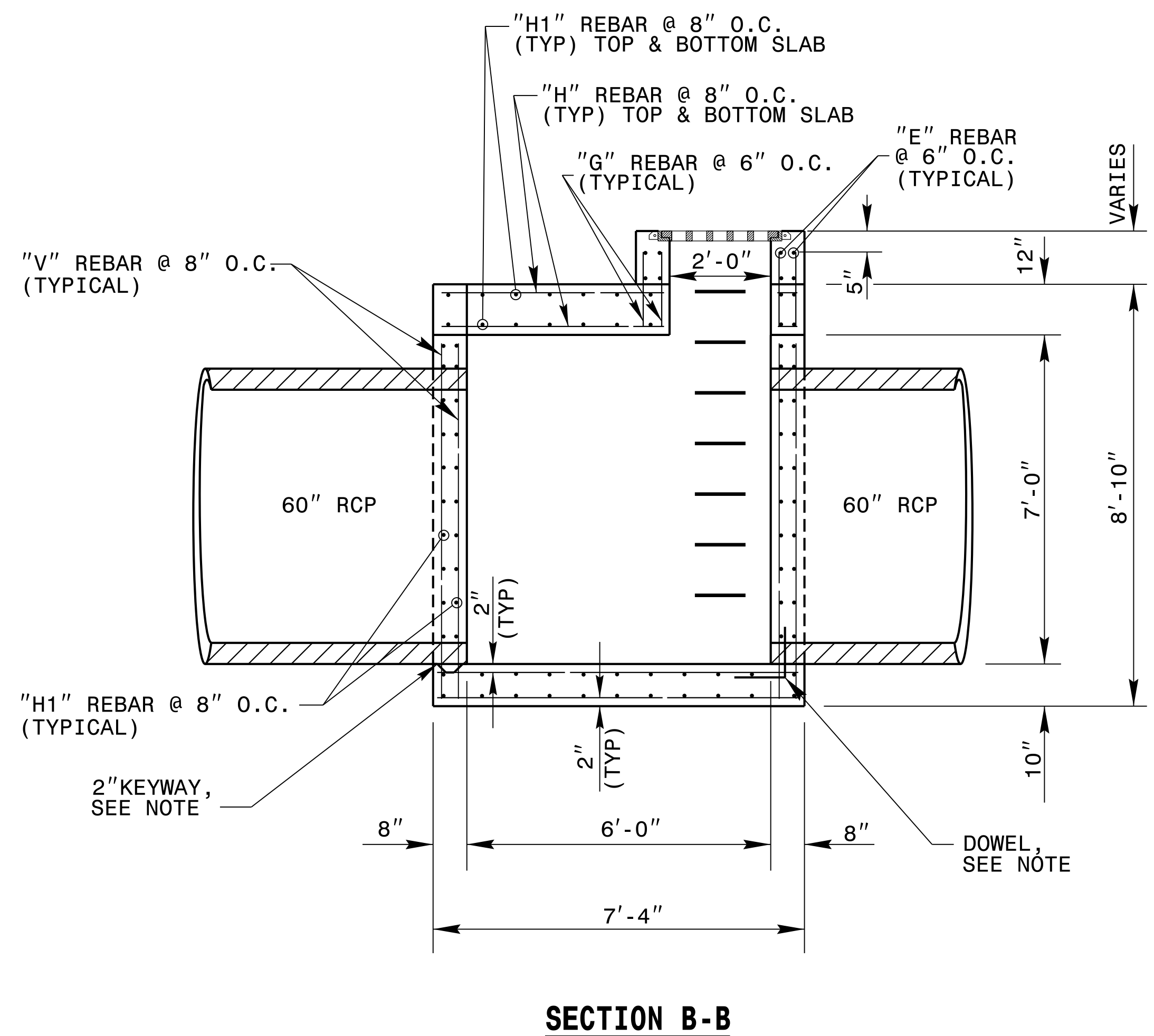
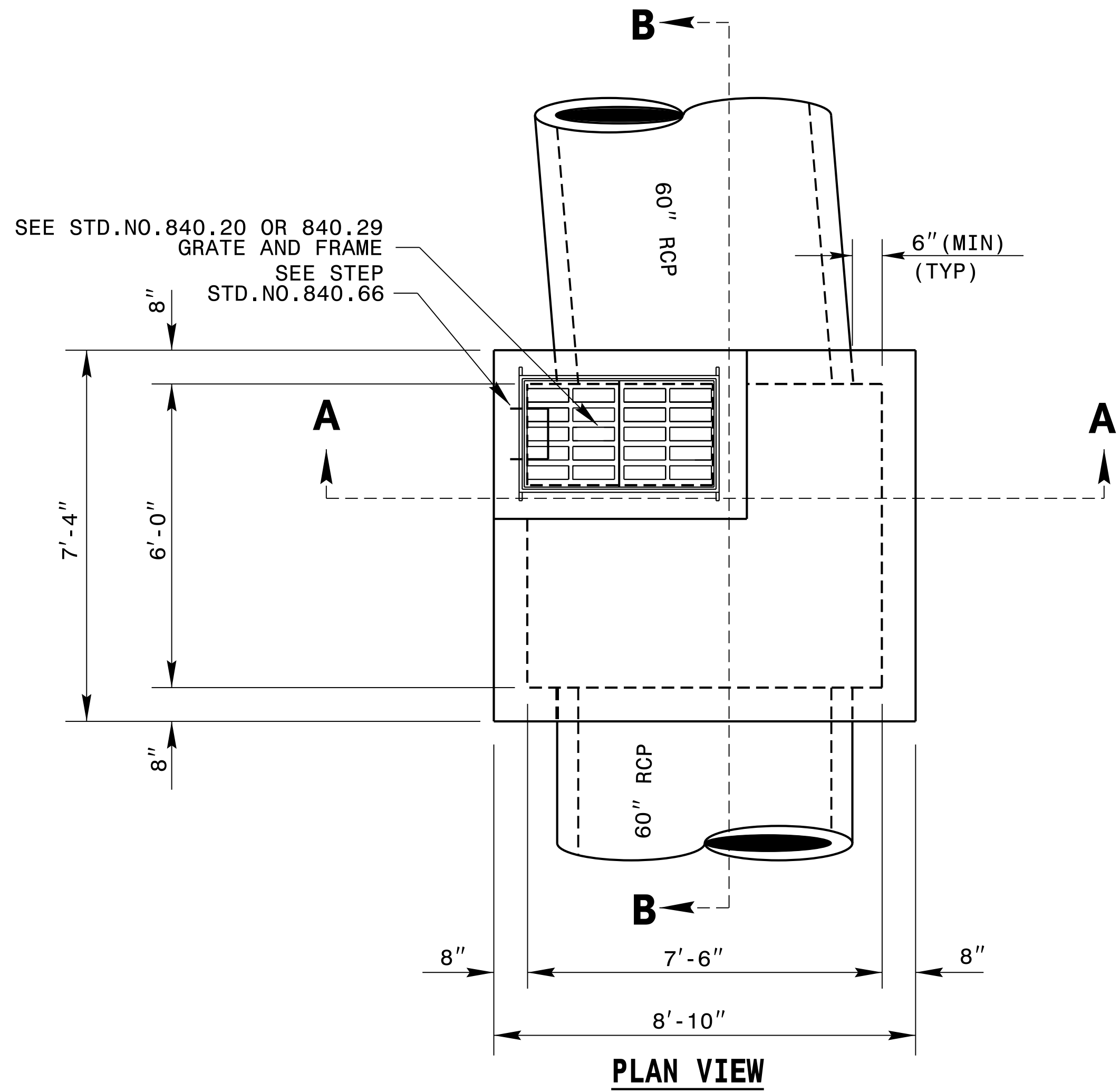
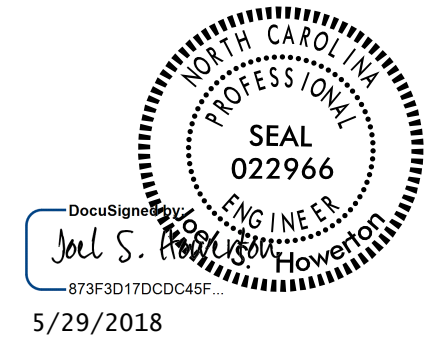


GENERAL NOTES:
 USE CLASS "AA" CONCRETE THROUGHOUT.
 PROVIDE ALL JUNCTION BOXES OVER 3'-6" IN DEPTH WITH STEPS 12" ON CENTER. USE STEPS WHICH COMPLY WITH STD. DRAWING 840.66.
 OPTIONAL CONSTRUCTION - MONOLITHIC POUR, 2" KEYWAY, OR #4 BAR DOWELS AT 12" CENTERS AS DIRECTED BY THE ENGINEER.
 USE FORMS FOR THE CONSTRUCTION OF THE BOTTOM SLAB.
 REFERENCE STD. DWG. 840.25 FOR FRAME ANCHORAGE.
 CHAMFER ALL EXPOSED CORNERS 1".
 2" MINIMUM CONCRETE COVERAGE ON ALL REBAR.
 HEIGHT DIMENSIONS MAY BE ADJUSTED DOWN FOR SMALLER PIPES AS DIRECTED BY THE ENGINEER.

BILL OF MATERIALS				
BAR	NO.	SIZE	LENGTH	WEIGHT
H	92	#5	7'-0"	672
H1	84	#5	8'-6"	745
V	92	#5	7'-6"	720
E	8	#5	4'-8"	39
F	8	#5	3'-0"	25
G	42	#5	1'-8"	73
Z	14	#5	4'-0"	59
TOTAL REINF. STEEL (LBS.)				2333
TOTAL CL. "AA" CONC. (CU.YDS.)				9.9



* NO DEDUCTION HAS BEEN MADE FOR PIPES



DOCUMENT NOT CONSIDERED FINAL UNLESS ALL SIGNATURES COMPLETED

CONTRACT STANDARDS & DEVELOPMENT UNIT
 STANDARDS AND SPECIAL DESIGN
 Office 919-707-6950 FAX 919-250-4119

TRAFFIC BEARING GRATED DROP INLET

ORIGINAL BY: _____ DATE: _____
 MODIFIED BY: kkempf DATE: 11/08/17
 CHECKED BY: _____ DATE: _____
 FILE SPEC.: detail/nbritt/english/hydro/66/tbjb.dgn

DRAWING NOT TO SCALE

25-MAY-2018 09:28
 S:\Contracts\Special Details\english\hydro\66_tbjb.dgn
 Jhowerton AT CSD-292595

5/14/99