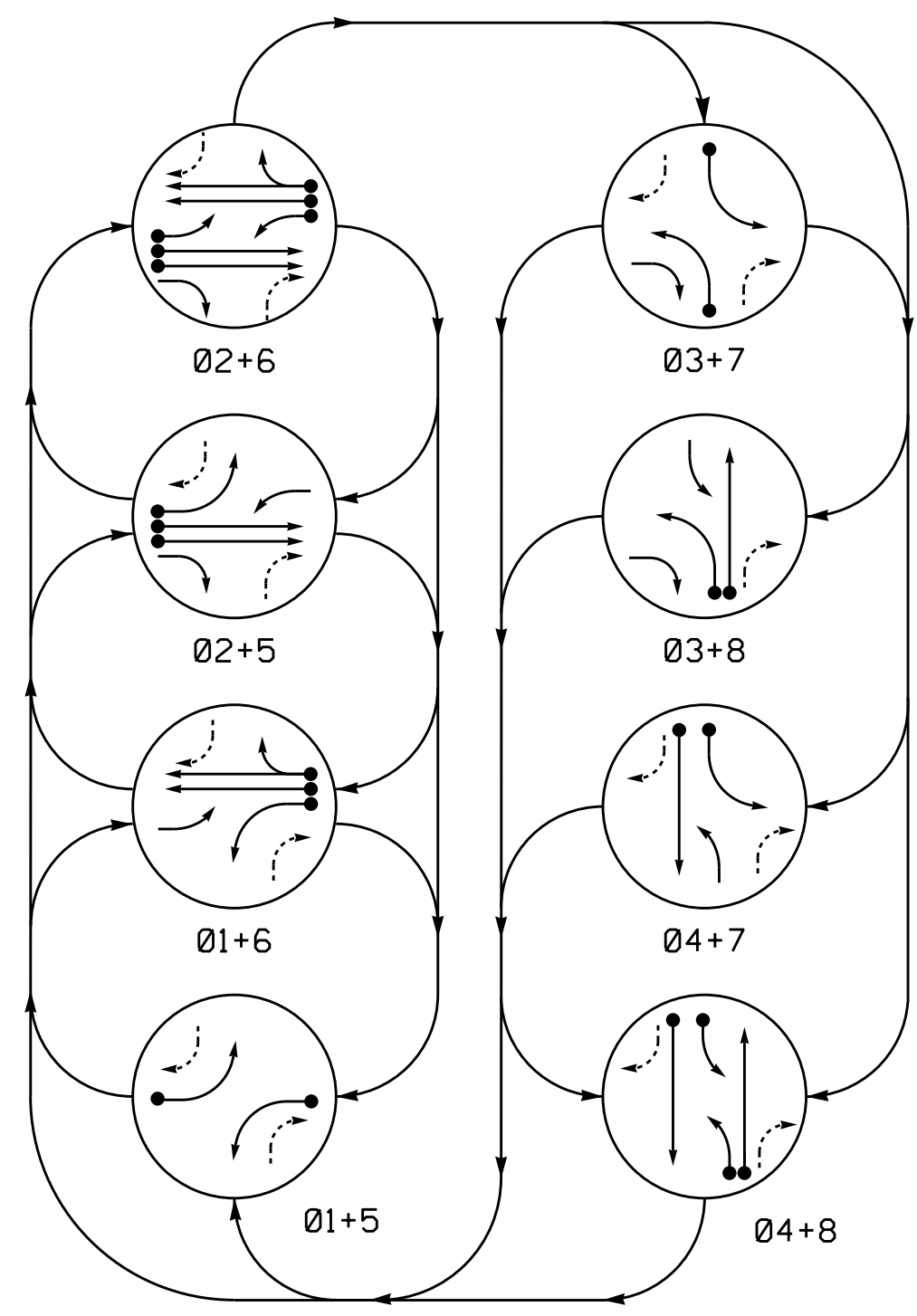
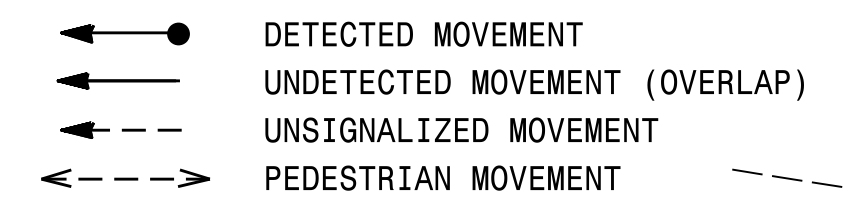


**PHASING DIAGRAM**



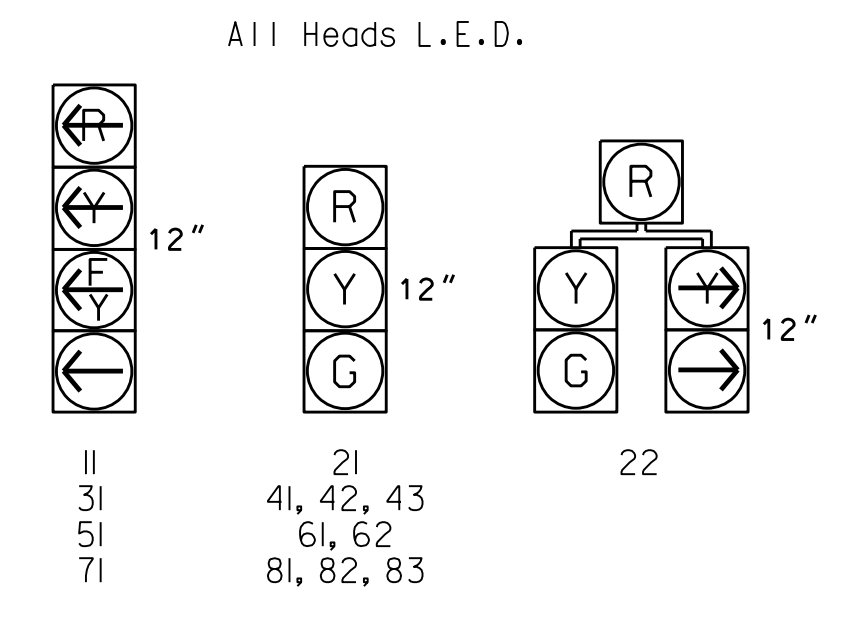
**PHASING DIAGRAM DETECTION LEGEND**



**TABLE OF OPERATION**

SIGNAL FACE	PHASE							
	01+5	01+6	02+5	02+6	03+7	03+8	04+7	04+8
11	←	←	←	←	←	←	←	←
21	R	R	G	G	R	R	R	Y
22	R	R	G	G	R	R	R	Y
31	←	←	←	←	←	←	←	←
41, 42, 43	R	R	R	R	R	R	G	R
51	←	←	←	←	←	←	←	←
61, 62	R	G	R	G	R	R	R	Y
71	←	←	←	←	←	←	←	←
81, 82, 83	R	R	R	R	R	G	R	G

**SIGNAL FACE I.D.**



**OASIS 2070 LOOP & DETECTOR INSTALLATION CHART**

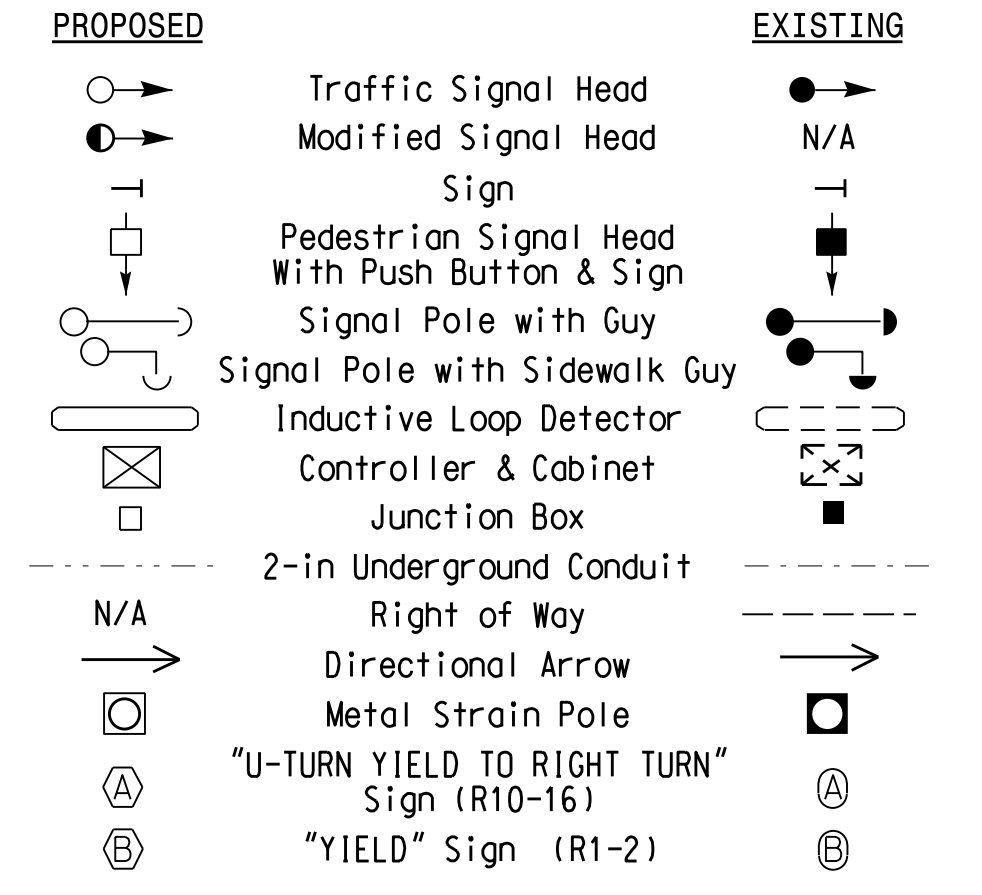
LOOP	SIZE (FT)	DISTANCE FROM STOPBAR (FT)	TURNS	NEW LOOP	DETECTOR PROGRAMMING						
					PHASE	CALLING	EXTENSION	STRETCH TIME	DELAY TIME	SYSTEM LOOP	NEW CARD
1A	6X40	0	2-4-2	Y	1	Y	Y	-	15	-	-
2A	6X6	355	5	Y	2	Y	Y	-	-	-	-
2B	6X6	355	5	Y	2	Y	Y	-	-	-	-
3A	6X40	0	2-4-2	Y	3	Y	Y	-	15	-	Y
4A	6X6	320	5	-	4	-	Y	-	2.5	-	-
4B	6X40	0	2-4-2	Y	4	Y	Y	-	-	-	-
5A	6X40	0	2-4-2	Y	5	Y	Y	-	15	-	Y
6A	6X12	355	5	Y	6	Y	Y	-	-	-	-
7A	6X40	0	2-4-2	Y	7	Y	Y	-	15	-	Y
8A	6X40	320	5	-	8	-	Y	-	2.5	-	-
8B	6X40	0	2-4-2	Y	8	Y	Y	-	-	-	-

**8 Phase Fully Actuated (Isolated)**

**NOTES**

1. Refer to "Roadway Standard Drawings NCDOT" dated January 2018 and "Standard Specifications for Roads and Structures" dated January 2018.
2. Do not program signal for late night flashing operation unless otherwise directed by the Engineer.
3. Renumber existing signal phases, loops, and heads as shown.
4. Phase 1 and/or phase 5 may be lagged.
5. Phase 3 and/or phase 7 may be lagged.
6. Set all detector units to presence mode.

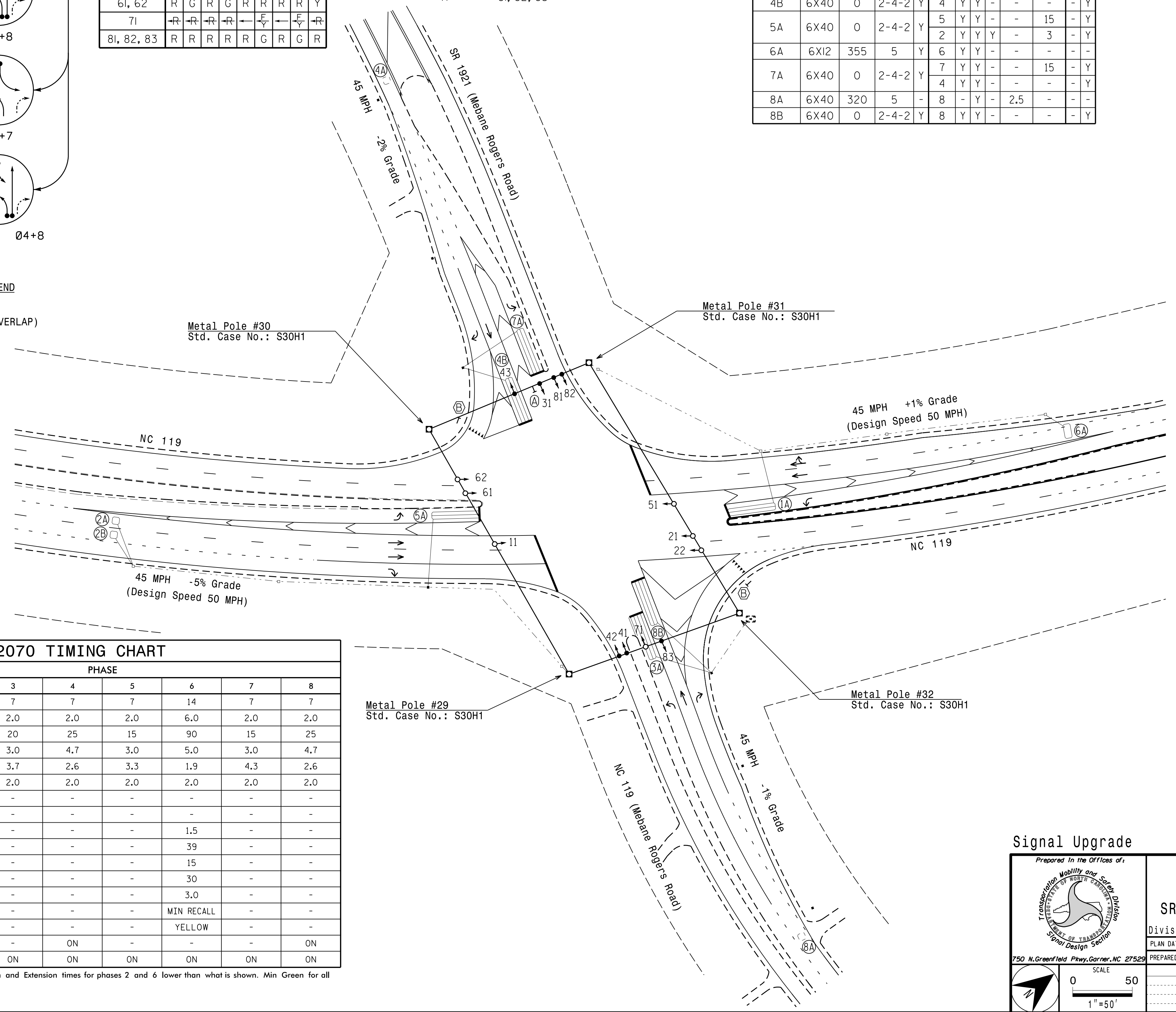
**LEGEND**



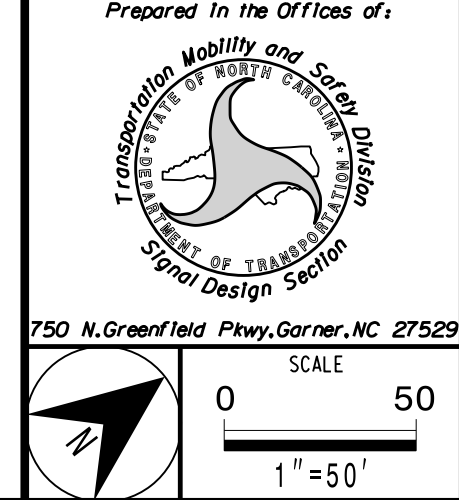
**OASIS 2070 TIMING CHART**

FEATURE	PHASE							
	1	2	3	4	5	6	7	8
Min Green 1*	7	14	7	7	7	14	7	7
Extension 1*	2.0	6.0	2.0	2.0	2.0	6.0	2.0	2.0
Max Green 1*	15	90	20	25	15	90	15	25
Yellow Clearance	3.0	5.0	3.0	4.7	3.0	5.0	3.0	4.7
Red Clearance	3.6	1.9	3.7	2.6	3.3	1.9	4.3	2.6
Red Revert	2.0	2.0	2.0	2.0	2.0	2.0	2.0	2.0
Walk 1*	-	-	-	-	-	-	-	-
Don't Walk 1	-	-	-	-	-	-	-	-
Seconds Per Actuation*	-	1.5	-	-	-	1.5	-	-
Max Variable Initial*	-	39	-	-	-	39	-	-
Time Before Reduction*	-	15	-	-	-	15	-	-
Time To Reduce*	-	30	-	-	-	30	-	-
Minimum Gap	-	3.0	-	-	-	3.0	-	-
Recall Mode	-	MIN RECALL	-	-	-	MIN RECALL	-	-
Vehicle Call Memory	-	YELLOW	-	-	-	YELLOW	-	-
Dual Entry	-	-	-	ON	-	-	-	ON
Simultaneous Gap	ON	ON	ON	ON	ON	ON	ON	ON

\* These values may be field adjusted. Do not adjust Min Green and Extension times for phases 2 and 6 lower than what is shown. Min Green for all other phases should not be lower than 4 seconds.



**Signal Upgrade**



NC 119 at SR 1921 (Mebane Rogers Road)

Division 7 Alamance County Mebane

PLAN DATE: March 2018 REVIEWED BY:

PREPARED BY: I. O. Umozurike REVIEWED BY:

REVISIONS: INIT. DATE

SCALE: 1"=50'

DOCUMENT NOT CONSIDERED FINAL UNLESS ALL SIGNATURES COMPLETED

SEAL

ROBERT J. ZIEMBA, ENGINEER

4/5/2018

SIG. INVENTORY NO. 07-1555

05-APR-2018 14:55 P:\111921\03109B\111921\03109B\111921\03109B\111921\03109B\111921\03109B\111921\03109B.dgn