

**This electronic collection of documents is provided
for the convenience of the user
and is Not a Certified Document –**

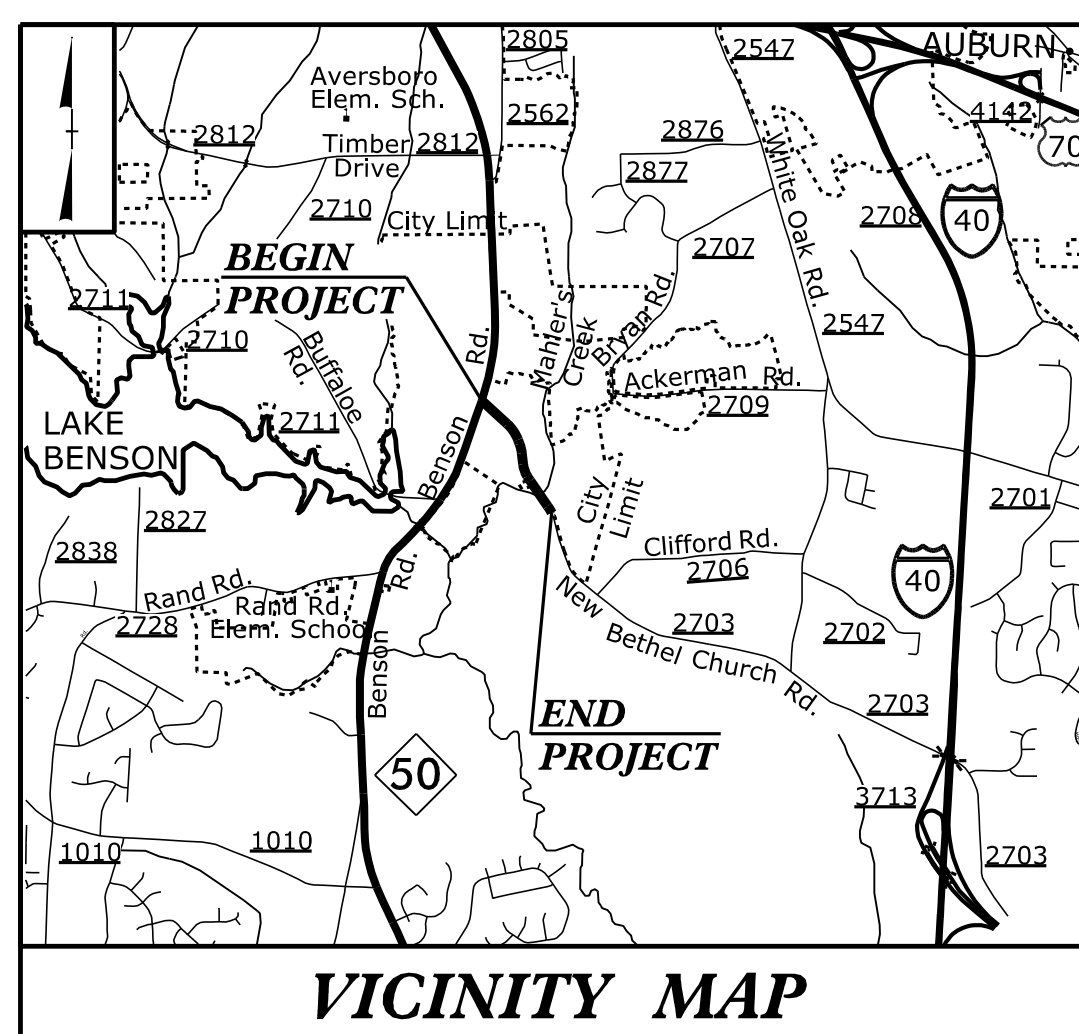
**The documents contained herein were originally issued
and sealed by the individuals whose names and license
numbers appear on each page, on the dates appearing
with their signature on that page.**

**This file or an individual page
shall not be considered a certified document.**

09.08/99

4/23/2018
M:\Projects\2018\029_NCDOT_Utility_Coord\K01_B5237\Utilities\Engineering\B00\Proj\B5237_Ut_tsh_U001_psh.dgn
Mawson

TIP PROJECT: B-5237



STATE OF NORTH CAROLINA
DIVISION OF HIGHWAYS

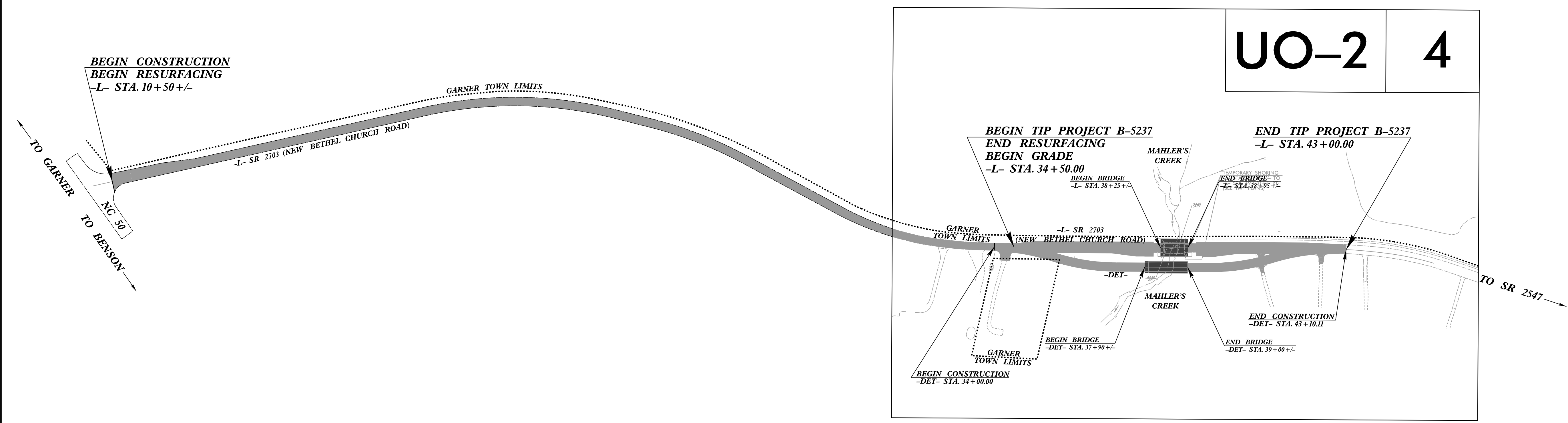
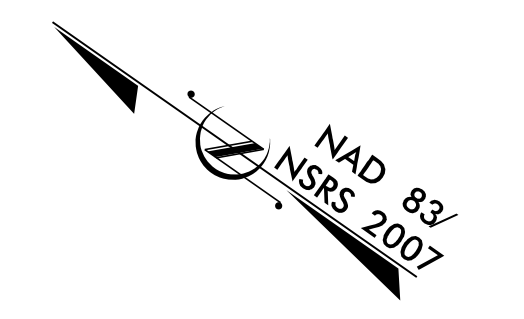
**UTILITIES BY OTHERS PLANS
WAKE COUNTY**

**LOCATION: BRIDGE NO. 248 OVER MAHLER'S CREEK
ON SR 2703 (NEW BETHEL CHURCH ROAD)**

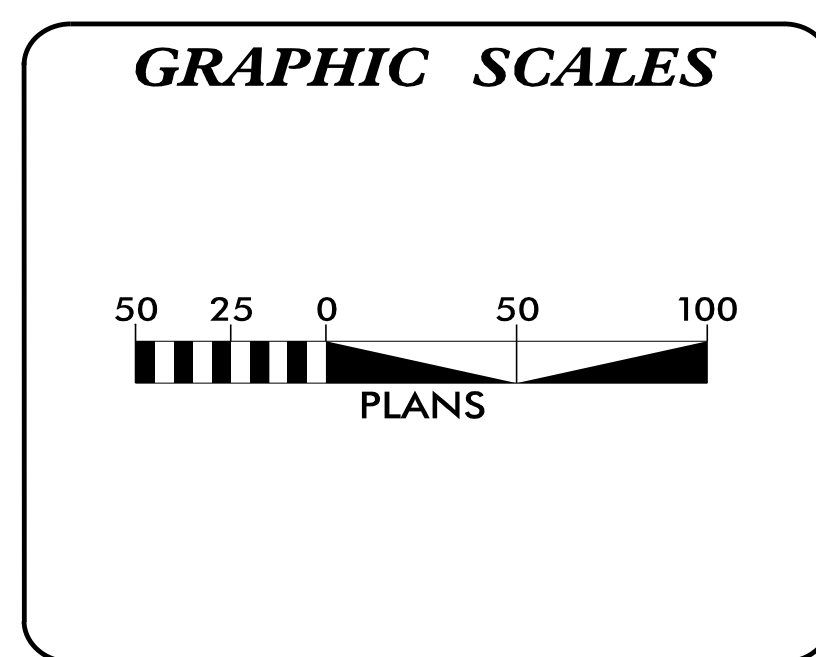
**TYPE OF WORK: AERIAL AND UNDERGROUND POWER, TELEPHONE/FIBER
OPTIC AND CATV.**

T.I.P. NO.	SHEET NO.
B-5237	UO-1

NOTE:
ALL UTILITY WORK SHOWN ON THIS SHEET IS DONE BY OTHERS.
NO PAYMENT WILL BE MADE TO THE CONTRACTOR FOR UTILITY WORK SHOWN ON THIS SHEET.



UO-2 4



INDEX OF SHEETS

SHEET NO.:	DESCRIPTION:
UO-1	TITLE SHEET
UO-2	UBO PLAN SHEET

UTILITY OWNERS WITH CONFLICTS


(A) DUKE PROGRESS ENERGY - POWER
(B) AT&T - TELEPHONE (COMMUNICATIONS)
(C) SPECTRUM - CABLEVISION (COMMUNICATIONS)

PREPARED IN THE OFFICE OF:

RK&K

RUMMEL, KLEPPER & KAHL, LLP
900 RIDGEFIELD DRIVE, SUITE 350
RALEIGH, NORTH CAROLINA 27609
NC LICENSE NO. F-0112
1-888-521-4455 OR 919-878-9560

Howard Woodall, PE UTILITY PROJECT MANAGER
Ashley Reid PROJECT UTILITY COORDINATOR
Mark Lawson PROJECT UTILITY CADD

 **DIVISION OF HIGHWAYS
UTILITIES UNIT**

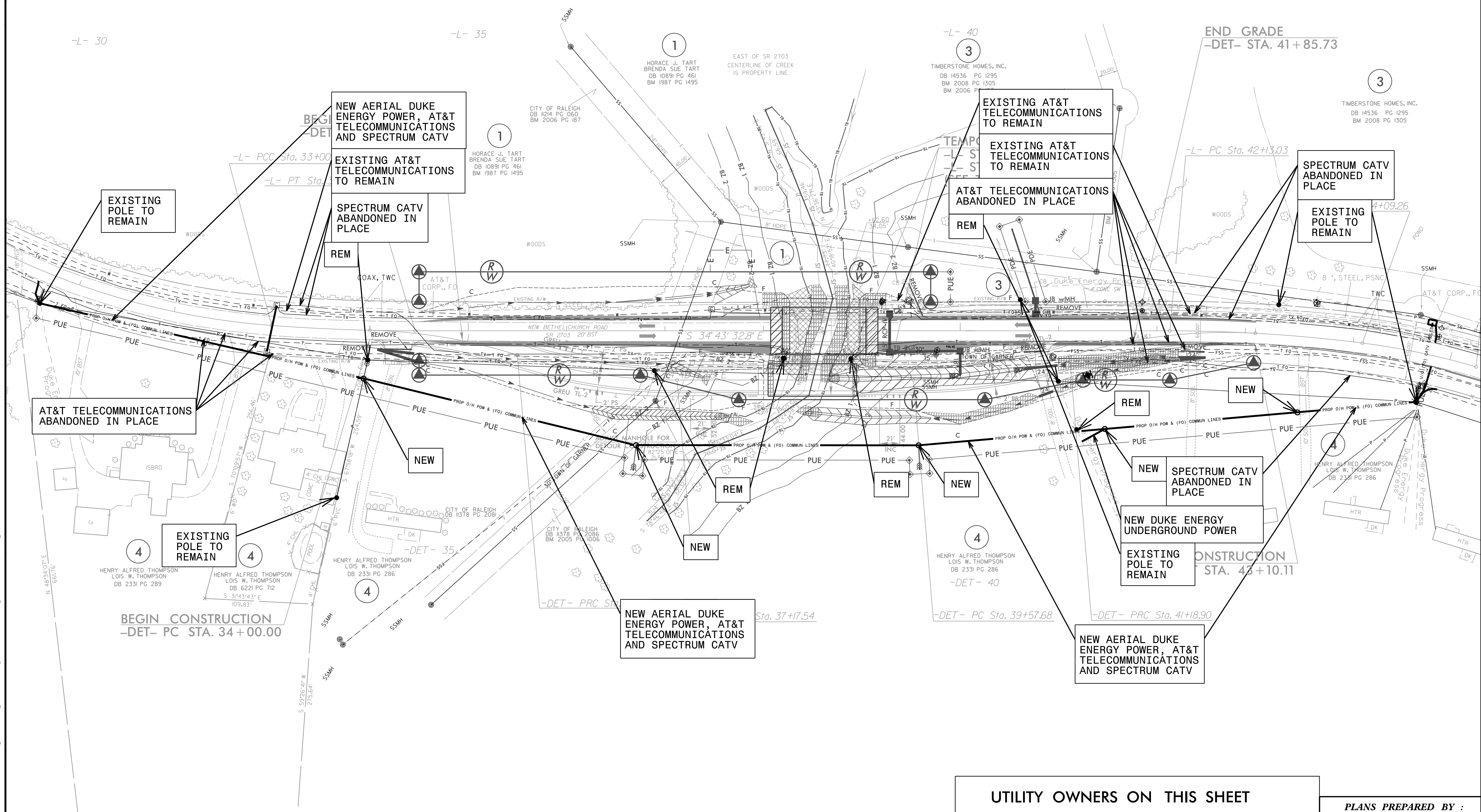
1555 MAIL SERVICES CENTER
RALEIGH, NC 27699-1555
PHONE (919) 707-6690
FAX (919) 250-4151

Donna Jackson, PE UTILITIES REGIONAL ENGINEER
Ali Kouchehi, PE UTILITIES ENGINEER
 UTILITIES AREA COORDINATOR
Tanga Sampson UTILITIES COORDINATOR

UTILITIES BY OTHERS

NOTE:
ALL UTILITY WORK SHOWN ON THIS SHEET WILL BE DONE BY OTHERS. NO PAYMENT WILL BE MADE TO THE CONTRACTOR FOR UTILITY WORK SHOWN ON THIS SHEET.

NAD 83/NSRS 2007



UTILITY OWNERS ON THIS SHEET	
DUKE ENERGY - POWER (DIST)	
AT&T - TELEPHONE (COMMUNICATIONS)	
SPECTRUM - CABLEVISION (COMMUNICATIONS)	

PLANS PREPARED BY :

RK&K

RUMMEL, KLEPPER & KAHL, LLP
900 RIDGEFIELD DRIVE SUITE 350
RALEIGH, NORTH CAROLINA 27609-3960
NC LICENSE NO. F-0112 • (919) 878-9560

5/14/99
I:\Coord\K01\5237\U0-2\Utilities\Engineering\UB0\Proj\B5237_ut_rdy04_U002_psh.dgn