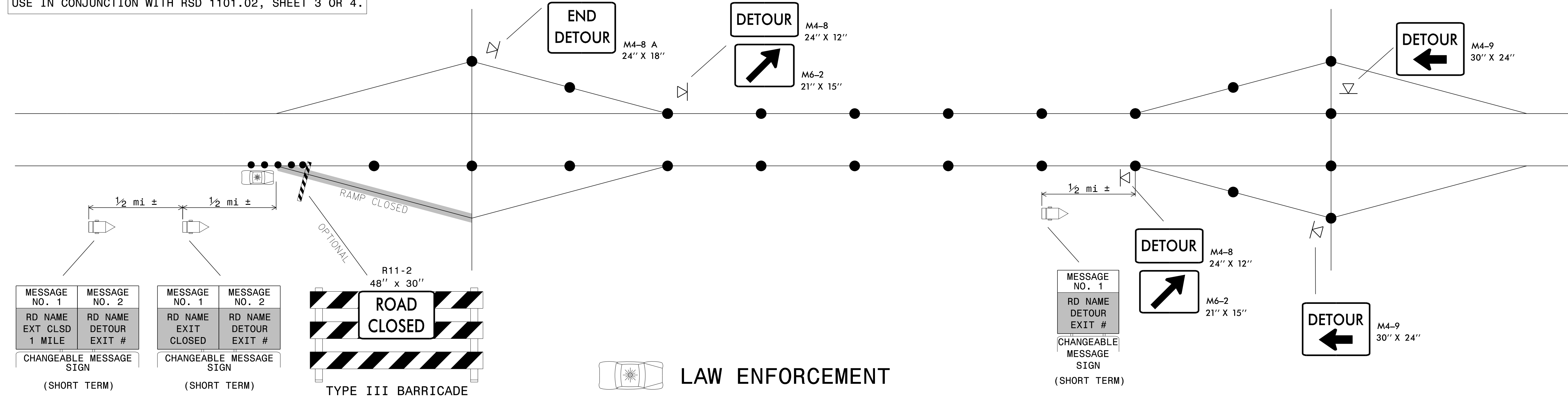


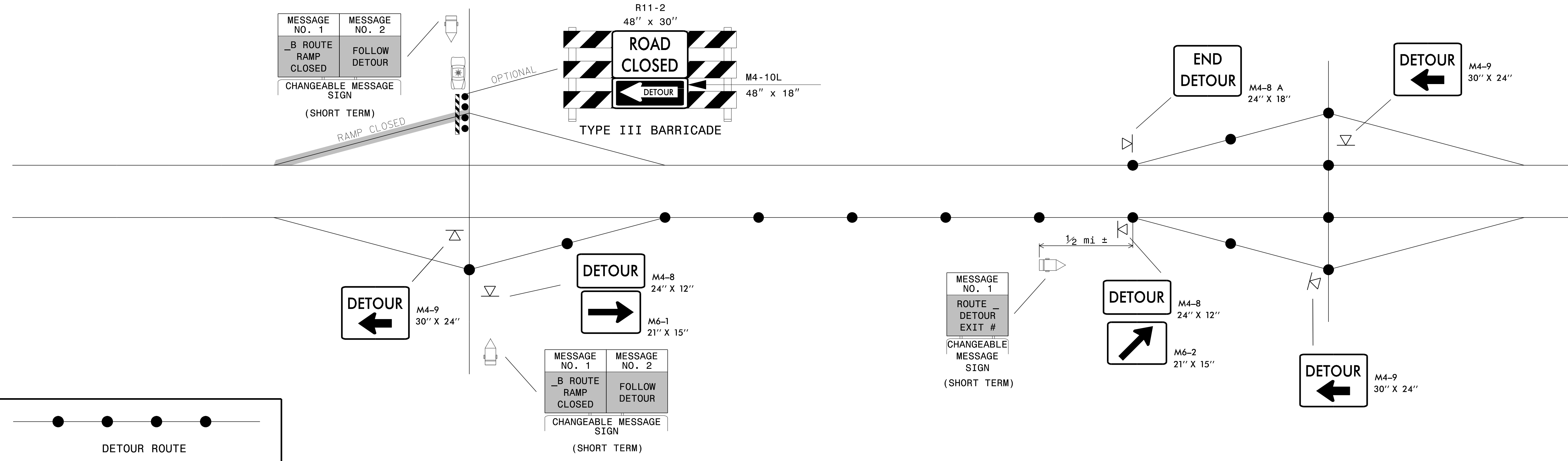
SHORT TERM CLOSURE AND DETOUR OF OFF-RAMP TO ADJACENT INTERCHANGE

USE IN CONJUNCTION WITH RSD 1101.02, SHEET 3 OR 4.



SHORT TERM CLOSURE AND DETOUR OF ON-RAMP TO ADJACENT INTERCHANGE

USE IN CONJUNCTION WITH RSD 1101.02, SHEET 3 OR 4.



GENERAL NOTES:

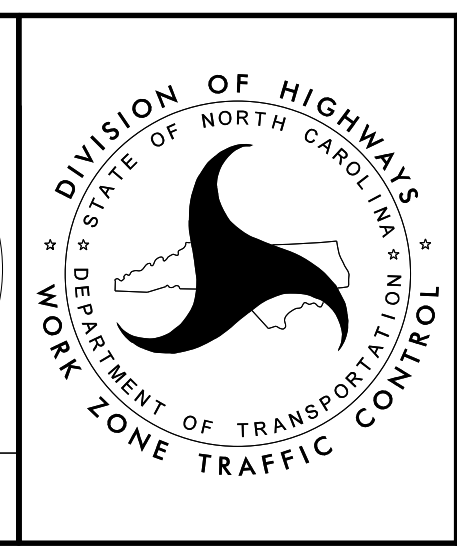
1. THIS DRAWING IS INTENDED FOR USE DURING SHORT TERM CLOSURES OF INTERSTATE AND FREEWAY RAMPS.
2. RAMP CLOSURES SHALL BE APPROVED BY THE ENGINEER.
3. IF RAMP CLOSURE RESTRICTIONS APPLY, SEE SPECIAL PROVISION, "INTERMEDIATE CONTRACT TIMES AND LIQUIDATED DAMAGES".
4. ADDITIONAL CHANGEABLE MESSAGE SIGNS AND POSSIBLE DETOUR SIGNS MAY BE NECESSARY FOR MORE COMPLEX CLOSURES/DETOURS. COMPENSATION FOR ADDITIONAL DEVICES SHALL BE MADE BASED ON THE UNIT BID PRICE FOR THE RESPECTIVE DEVICE.

APPROVED: *Steve Kite*
DATE: 2/23/2017

DocuSigned by:
Steve Kite
E27CE30E10FC442...

SEAL
022104
JOHN S. KITE, II
ENGINEER

**DOCUMENT NOT CONSIDERED FINAL
UNLESS ALL SIGNATURES COMPLETED**



**SHORT TERM CLOSURE
AND DETOUR OF
INTERSTATE/FREEWAY
RAMPS**

2/23/2017 S:\TMU\WZTC\DesignGroup3\Squad3B\0Data\Interstate Resurfacing Provisions and Details\TypicalOff-Ramp Detour.dgn User:keddis