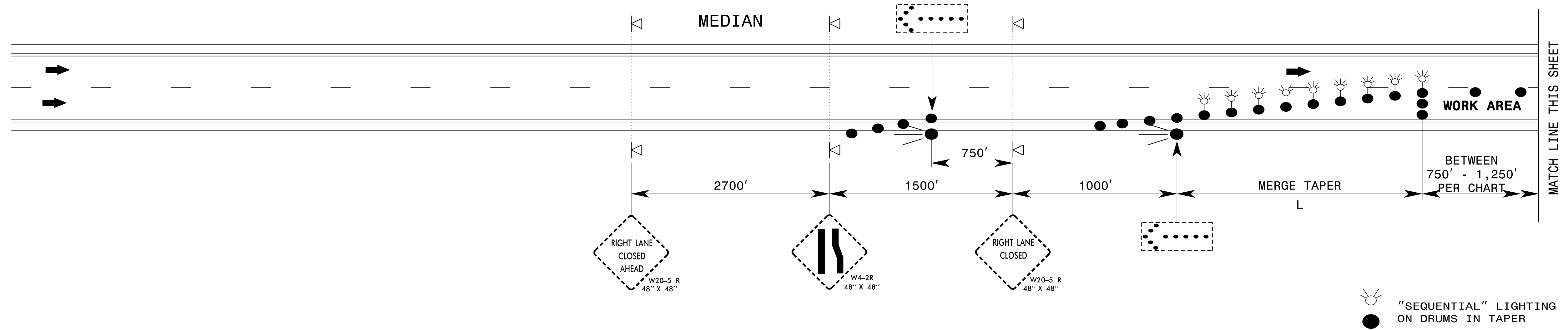


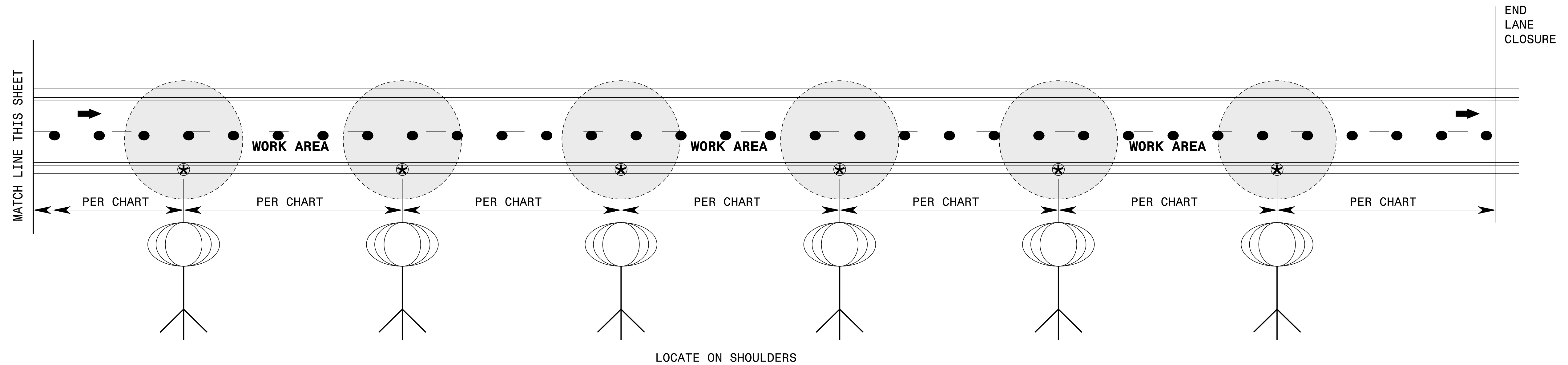
ADVANCE WARNING AREA

I-5915A

SHEET NO.
TMP-3



WORK ZONE AREA



LOCATE ON SHOULDERS

SPACING CHART

LIGHT OUTPUT (LUMENS)	MINIMUM LIGHTED FIXTURE AREA (SQUARE FEET)	MAXIMUM SPACING (FEET)	LIGHT UNITS (PER MILE)
50,000 TO 65,000	5.5	750'	6
66,000 TO 80,000	5.5	1,000'	5
81,000 TO 100,000	36	1,250'	4

NOTES

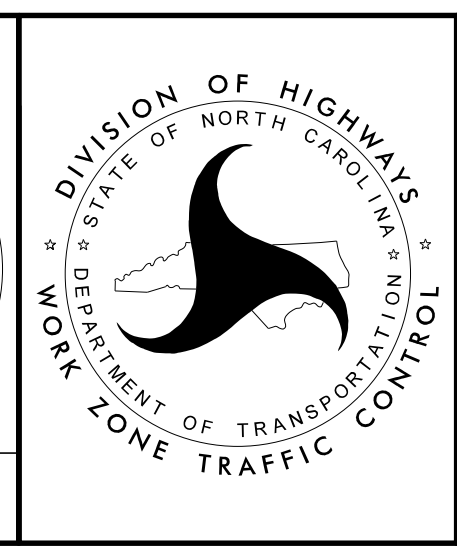
- 1) SPACE LIGHT UNITS ACCORDING TO THE CHART.
- 2) EACH LIGHT UNIT SHALL BE CAPABLE OF ELEVATING TO A MINIMUM HEIGHT OF 14' ABOVE THE PAVEMENT.
- 3) PLACE ON PAVED SHOULDER IF POSSIBLE.

APPROVED: *Steve Kite*
DATE: 3/17/2017

DocuSigned by:
E27CE30E1DFC442...

SEAL
022104
ENGINEER
JOHN S. KITE, II

**DOCUMENT NOT CONSIDERED FINAL
UNLESS ALL SIGNATURES COMPLETED**



**SEQUENTIAL FLASHING
WARNING LIGHTS
AND
WORK ZONE
PRESENCE LIGHTING**

3/17/2017 S:\TMD\WZTC\DesignGroup3\Squad3B\Drawings\Sequential.and.Presence Lighting_20170227.dgn User:kedais