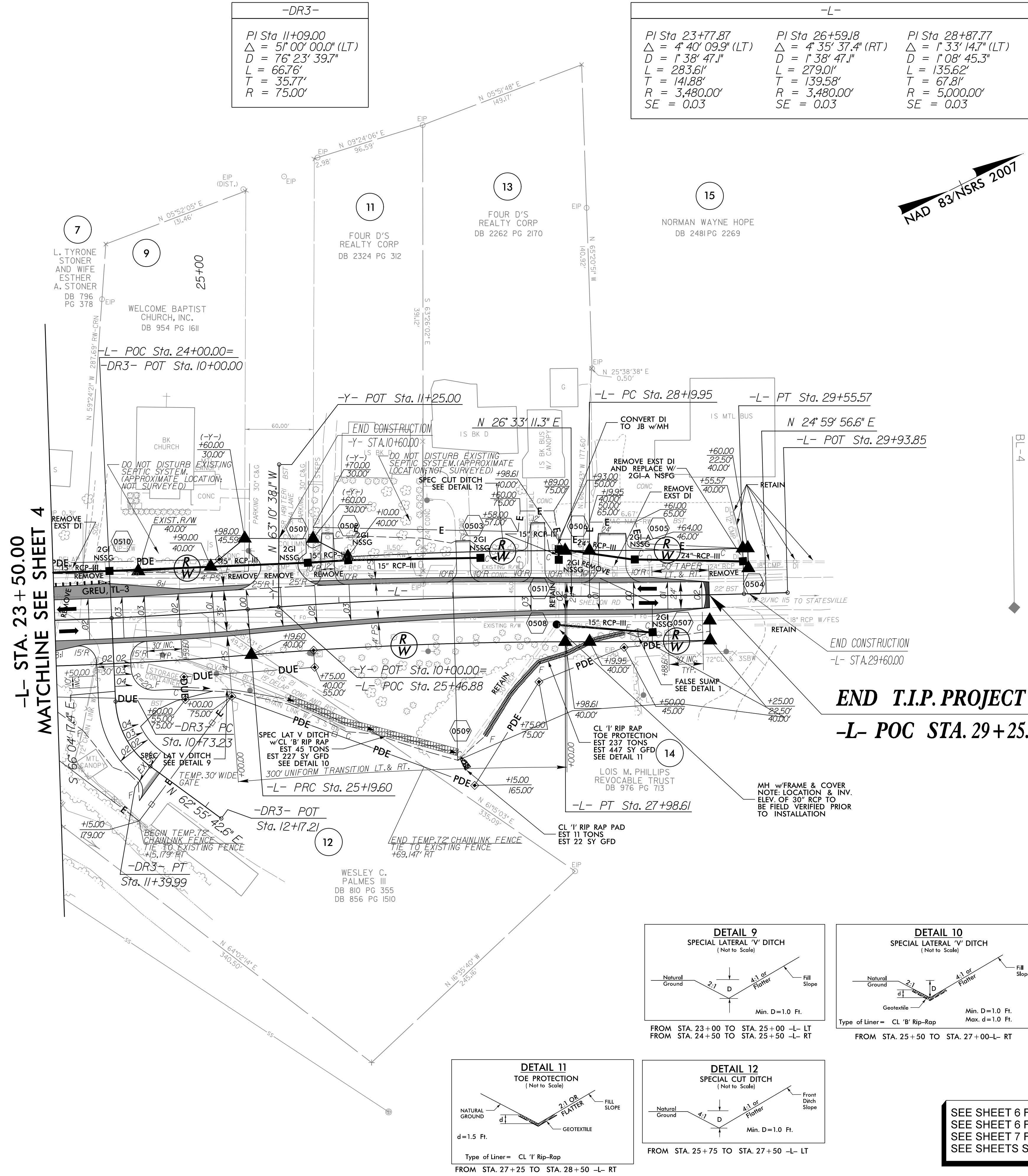
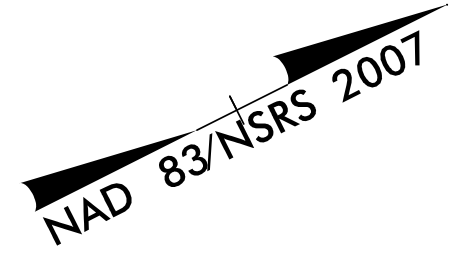


**-DR3-**  
 PI Sta 11+09.00  
 $\Delta = 51^{\circ}00'00.0''$  (LT)  
 $D = 76^{\circ}23'39.7''$   
 $L = 66.76'$   
 $T = 35.77'$   
 $R = 75.00'$

**-L-**

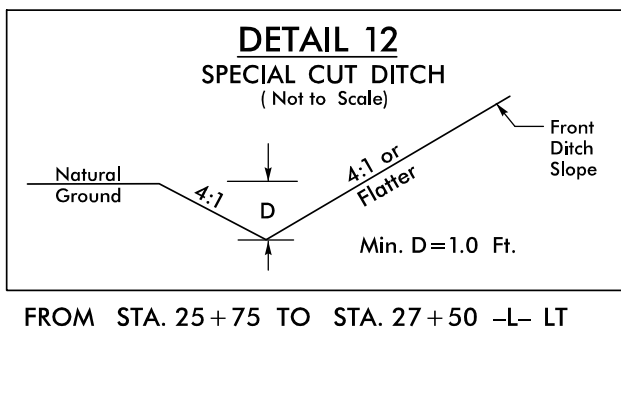
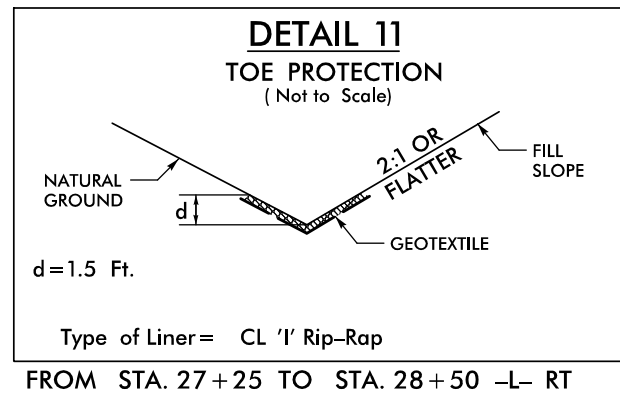
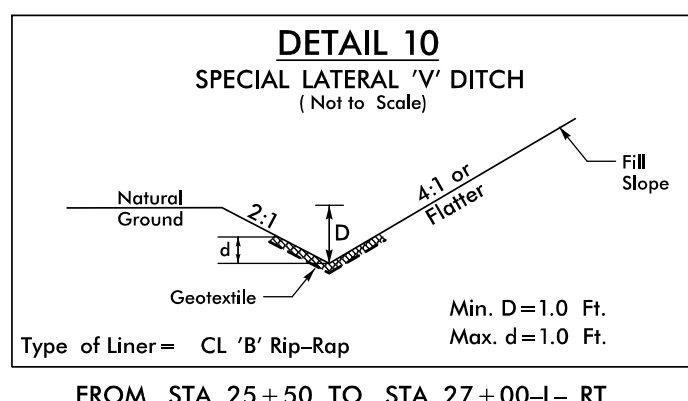
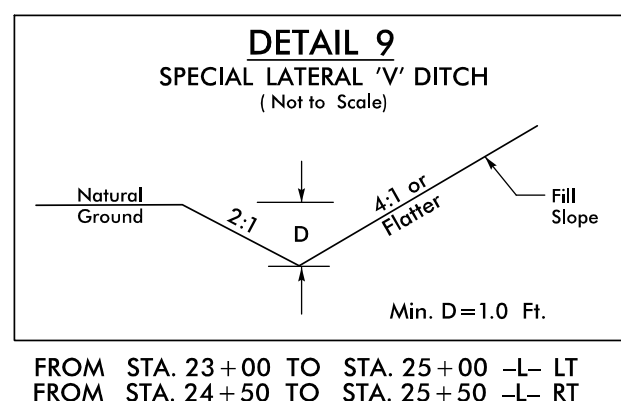
PI Sta 23+77.87 $\Delta = 4^{\circ}40'09.9''$ (LT) $D = 1^{\circ}38'47.1''$ $L = 283.61'$ $T = 141.88'$ $R = 3,480.00'$ SE = 0.03	PI Sta 26+59.18 $\Delta = 4^{\circ}35'37.4''$ (RT) $D = 1^{\circ}38'47.1''$ $L = 279.01'$ $T = 139.58'$ $R = 3,480.00'$ SE = 0.03	PI Sta 28+87.77 $\Delta = 1^{\circ}33'14.7''$ (LT) $D = 1^{\circ}08'45.3''$ $L = 135.62'$ $T = 67.81'$ $R = 5,000.00'$ SE = 0.03
---	---	--

PROJECT REFERENCE NO. B-4982	SHEET NO. 5
RW SHEET NO.	
ROADWAY DESIGN ENGINEER	HYDRAULICS ENGINEER
<b>DOCUMENT NOT CONSIDERED FINAL UNLESS ALL SIGNATURES COMPLETED</b>	
STV Engineers, Inc. 900 West Trade St., Suite 715 Charlotte, NC 28202 NC License Number F-0991	



-L- STA. 23 + 50.00  
 MATCHLINE SEE SHEET 4

**END T.I.P. PROJECT B-4982**  
**-L- POC STA. 29 + 25.00**



SEE SHEET 6 FOR -L- PROFILE  
 SEE SHEET 6 FOR -Y- PROFILE  
 SEE SHEET 7 FOR -DR3- PROFILE  
 SEE SHEETS S-1 THRU S-67 FOR STRUCTURE PLANS