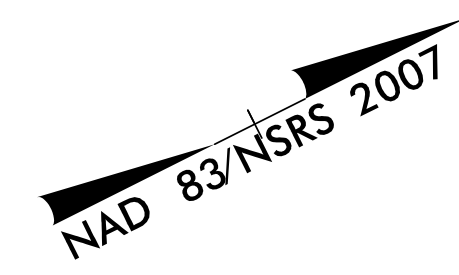


-L-		
PI Sta 15+41.56	PI Sta 18+04.55	PI Sta 23+77.87
$\Delta = 4' 19'' 48.0''$ (RT)	$\Delta = 4' 19'' 48.0''$ (LT)	$\Delta = 4' 40'' 09.9''$ (LT)
$D = 1' 38'' 47.1''$	$D = 1' 38'' 47.1''$	$D = 1' 38'' 47.1''$
$L = 262.99'$	$L = 262.99'$	$L = 283.61'$
$T = 131.56'$	$T = 131.56'$	$T = 141.88'$
$R = 3,480.00'$	$R = 3,480.00'$	$R = 3,480.00'$
$SE = 0.03$	$SE = 0.03$	$SE = 0.03$



PROJECT REFERENCE NO. B-4982 SHEET NO. 4

RW SHEET NO.

ROADWAY DESIGN ENGINEER: [Signature]

HYDRAULICS ENGINEER: [Signature]

STV Engineers, Inc. 100 Years logo

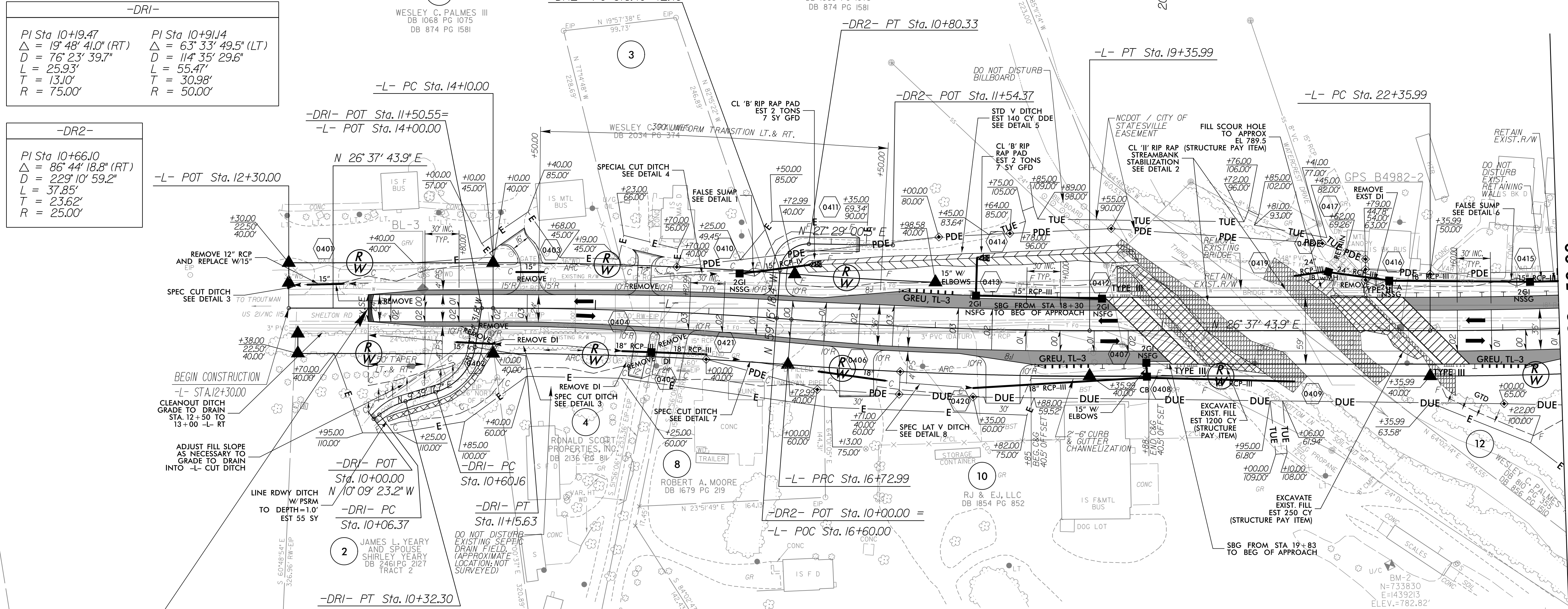
STV Engineers, Inc. 800 West Trade St., Suite 715 Charlotte, NC 28202 NC License Number F-0991

-DRI-

PI Sta 10+91.47	PI Sta 10+91.14
$\Delta = 19' 48'' 41.0''$ (RT)	$\Delta = 63' 33'' 49.5''$ (LT)
$D = 76' 23'' 39.7''$	$D = 114' 35'' 29.6''$
$L = 25.93'$	$L = 55.47'$
$T = 13.10'$	$T = 30.98'$
$R = 75.00'$	$R = 50.00'$

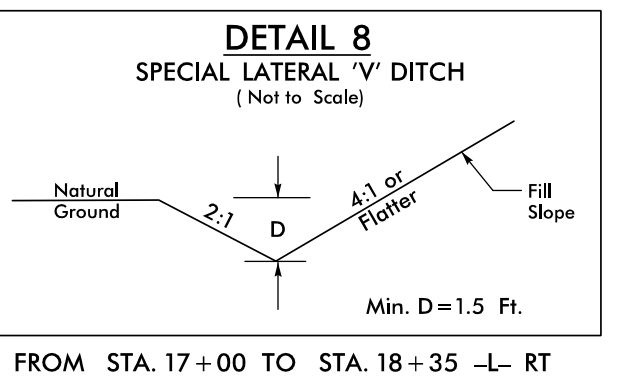
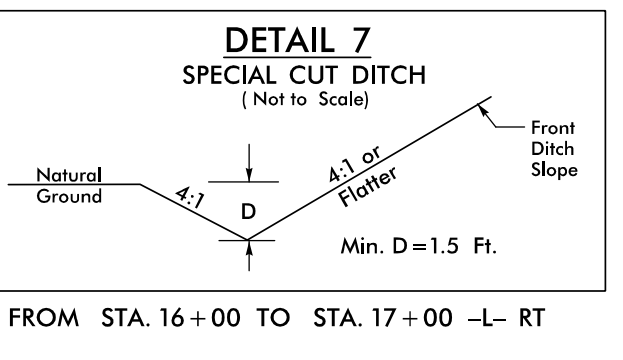
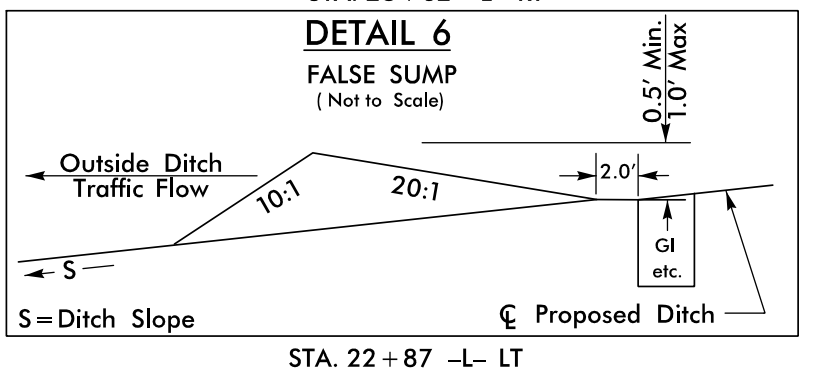
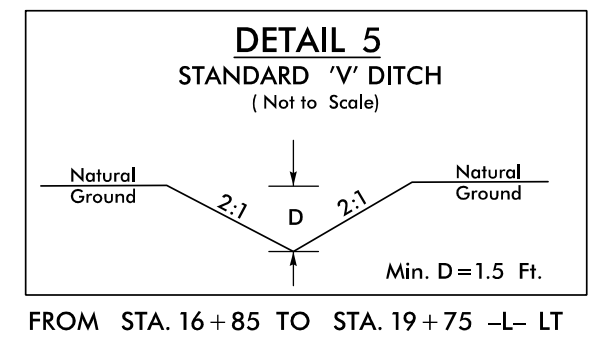
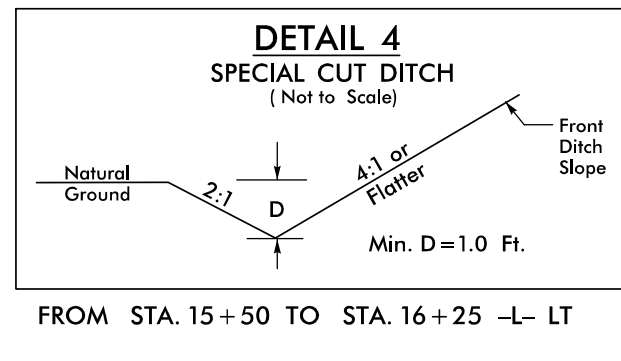
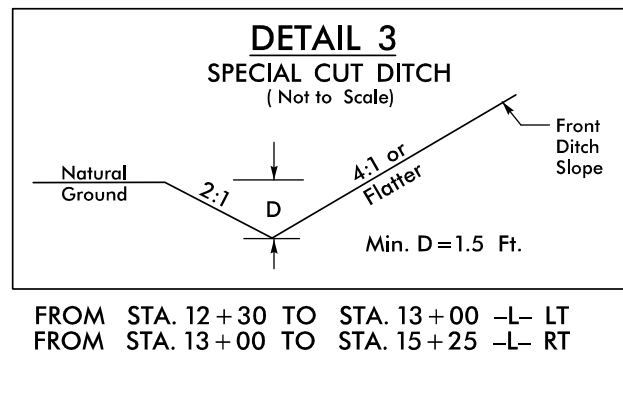
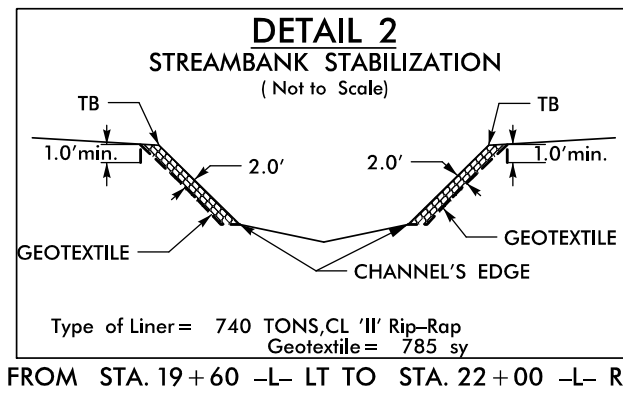
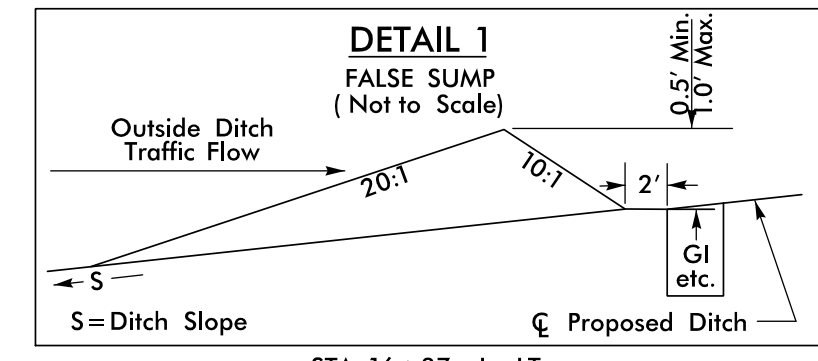
-DR2-

PI Sta 10+66.10
$\Delta = 86' 44'' 18.8''$ (RT)
$D = 229' 10'' 59.2''$
$L = 37.85'$
$T = 23.62'$
$R = 25.00'$



BEGIN T.I.P. PROJECT B-4982
-L- POT STA. 13+00.00

-L- STA. 23+50.00
 MATCHLINE SEE SHEET 5



SEE SHEET 6 FOR -L- PROFILE
 SEE SHEET 7 FOR -DRI- PROFILE
 SEE SHEET 7 FOR -DR2- PROFILE
 SEE SHEETS S-1 THRU S-67 FOR STRUCTURE PLANS