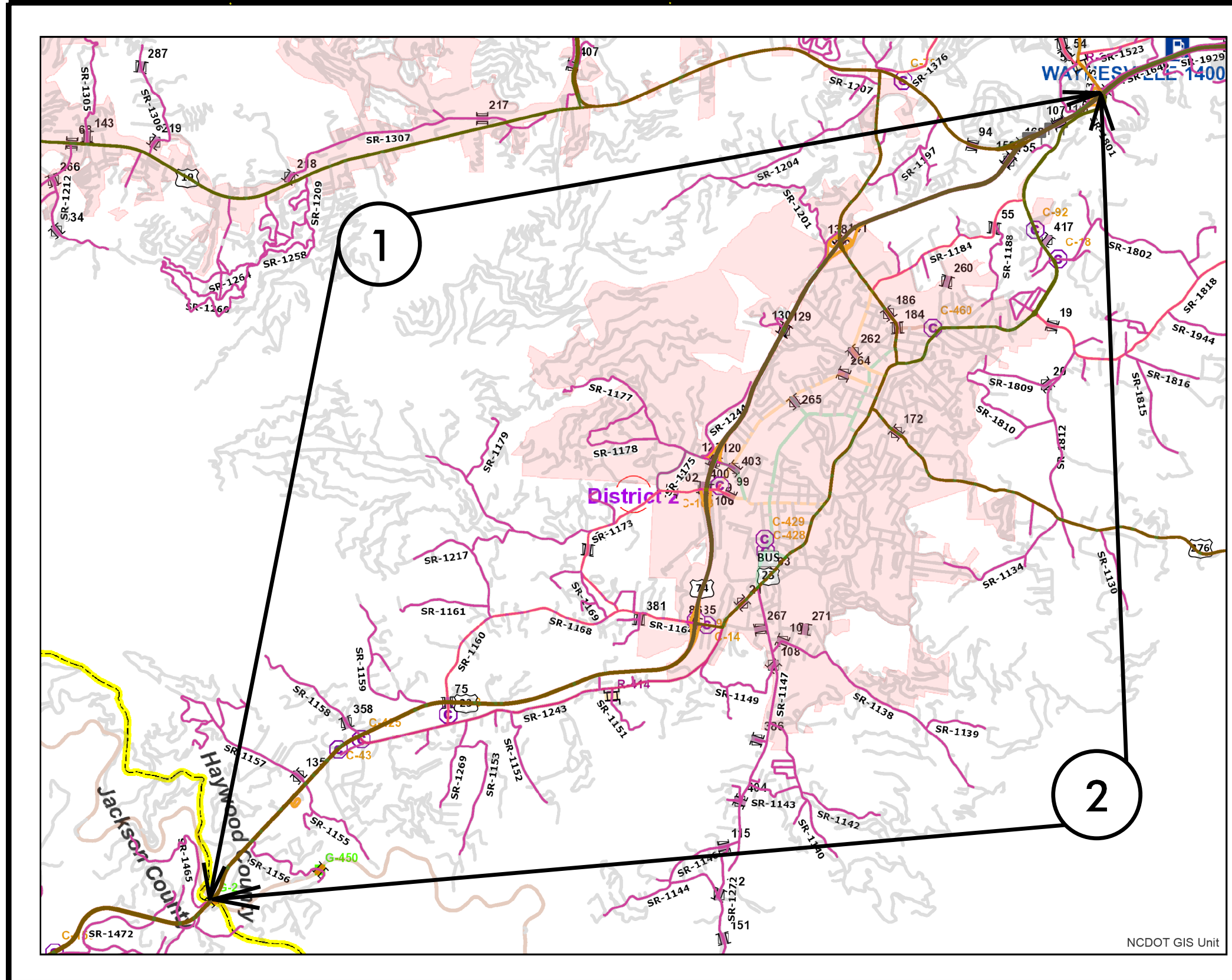


HAYWOOD COUNTY

PROJECT REFERENCE NO.		SHEET NO.
2019CPT.14.05.10441.ETC		1
STATE PROJECT	F.A. PROJECT NO.	DESCRIPTION
		1,2

TIP PROJECT: N/A

CONTRACT: C204188



US 74 WEST
MAP 1



US 74 EAST
MAP 2

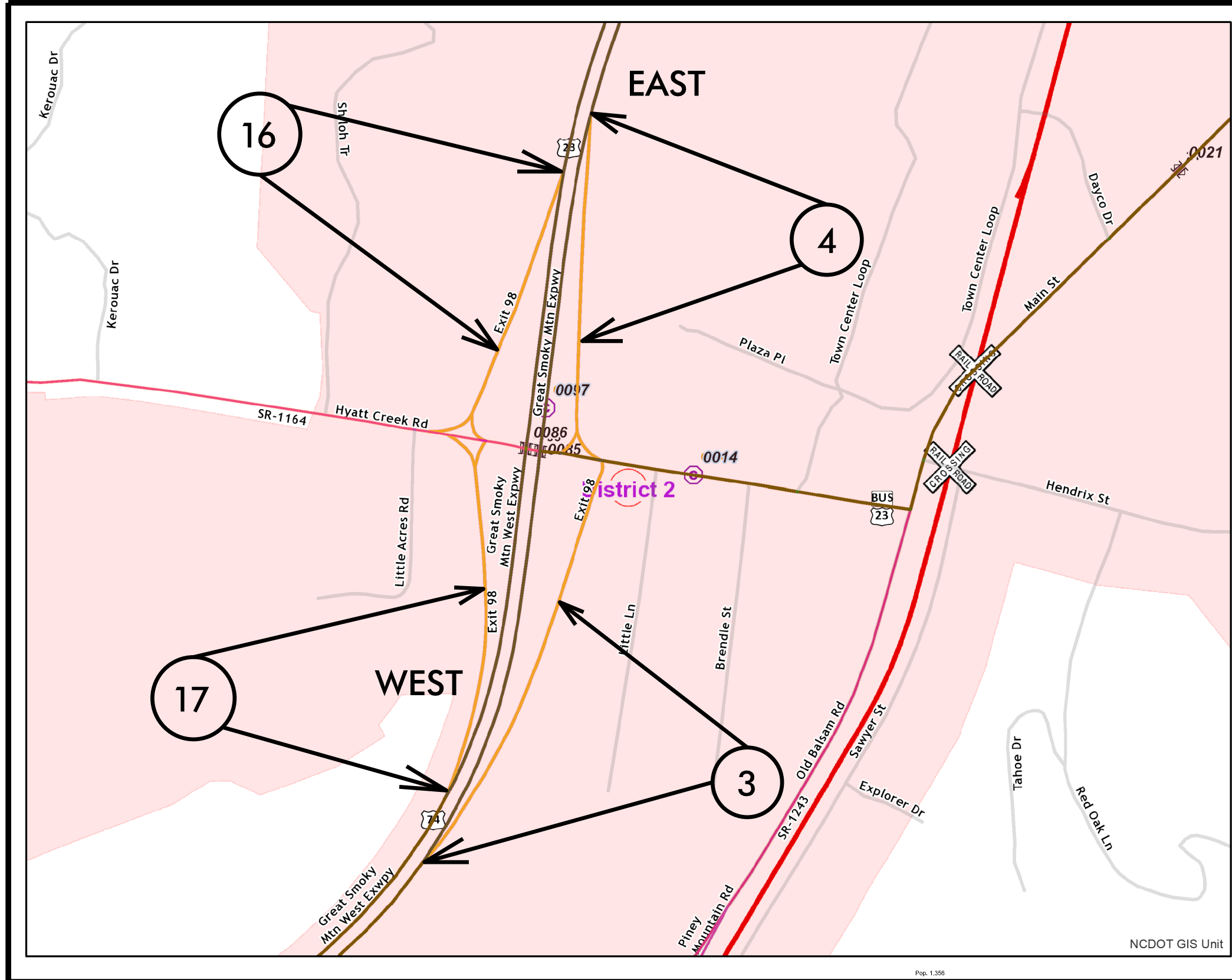


CONTRACT: C204188 TIP PROJECT: N/A

CONTRACT: C204188

HAYWOOD COUNTY

PROJECT REFERENCE NO.		SHEET NO.
2019CPT.14.05.10441.ETC		2
STATE PROJECT	F.A. PROJECT NO.	DESCRIPTION



EB EXIT 98 MAP 3



EB EXIT 98 MAP 4



WB EXIT 98 MAP 16



WB EXIT 98 MAP 17



NCDOT GIS Unit

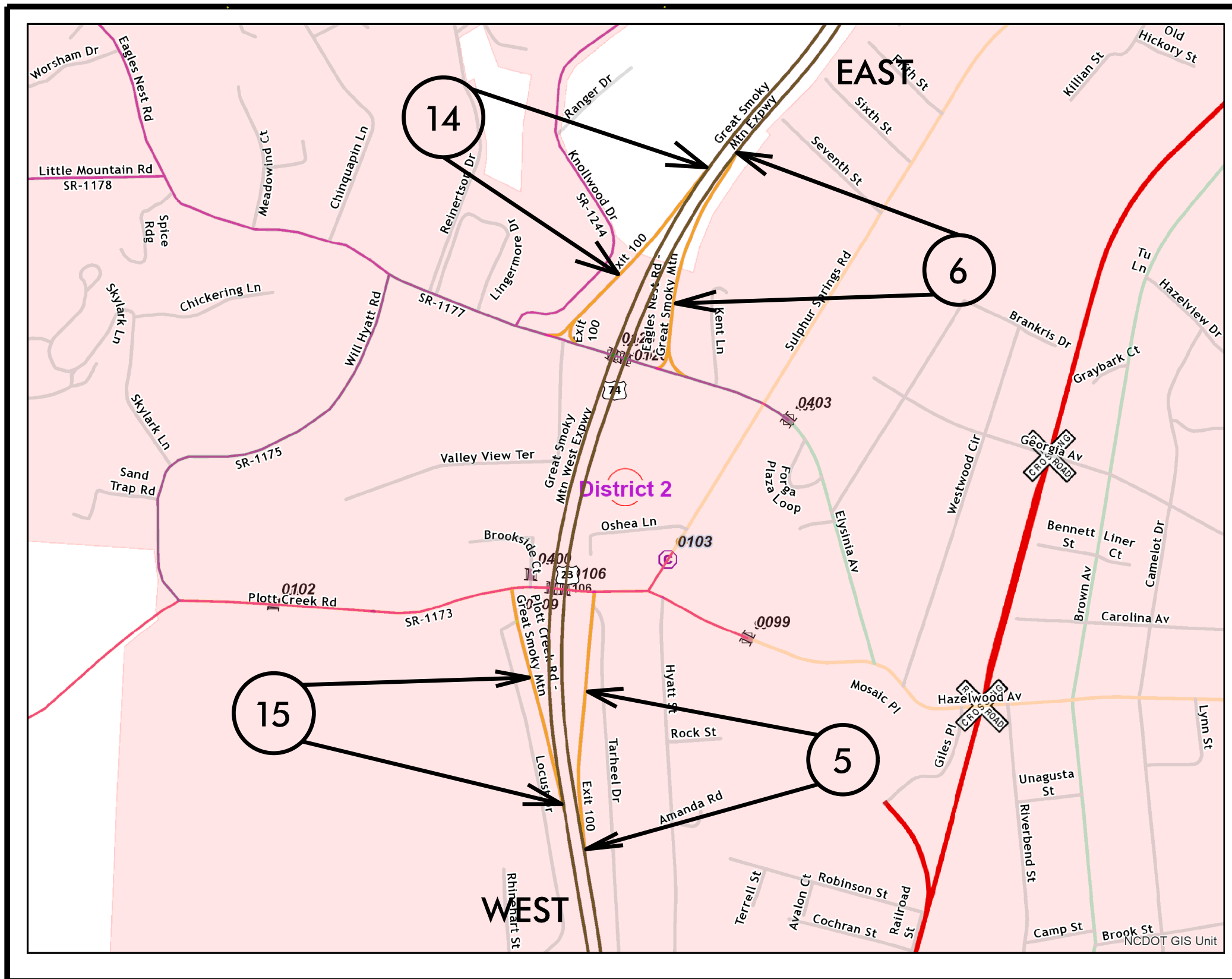
Pop. 1,356

PROJECT REFERENCE NO.	SHEET NO.
2019CPT.14.05.10441.ETC	3
STATE PROJECT	F.A. PROJECT NO.
	DESCRIPTION

HAYWOOD COUNTY

TIP PROJECT: N/A

CONTRACT: C204188



EB EXIT 100 MAP 5



EB EXIT 100 MAP 6



WB EXIT 100 MAP 14



WB EXIT 100 MAP 15



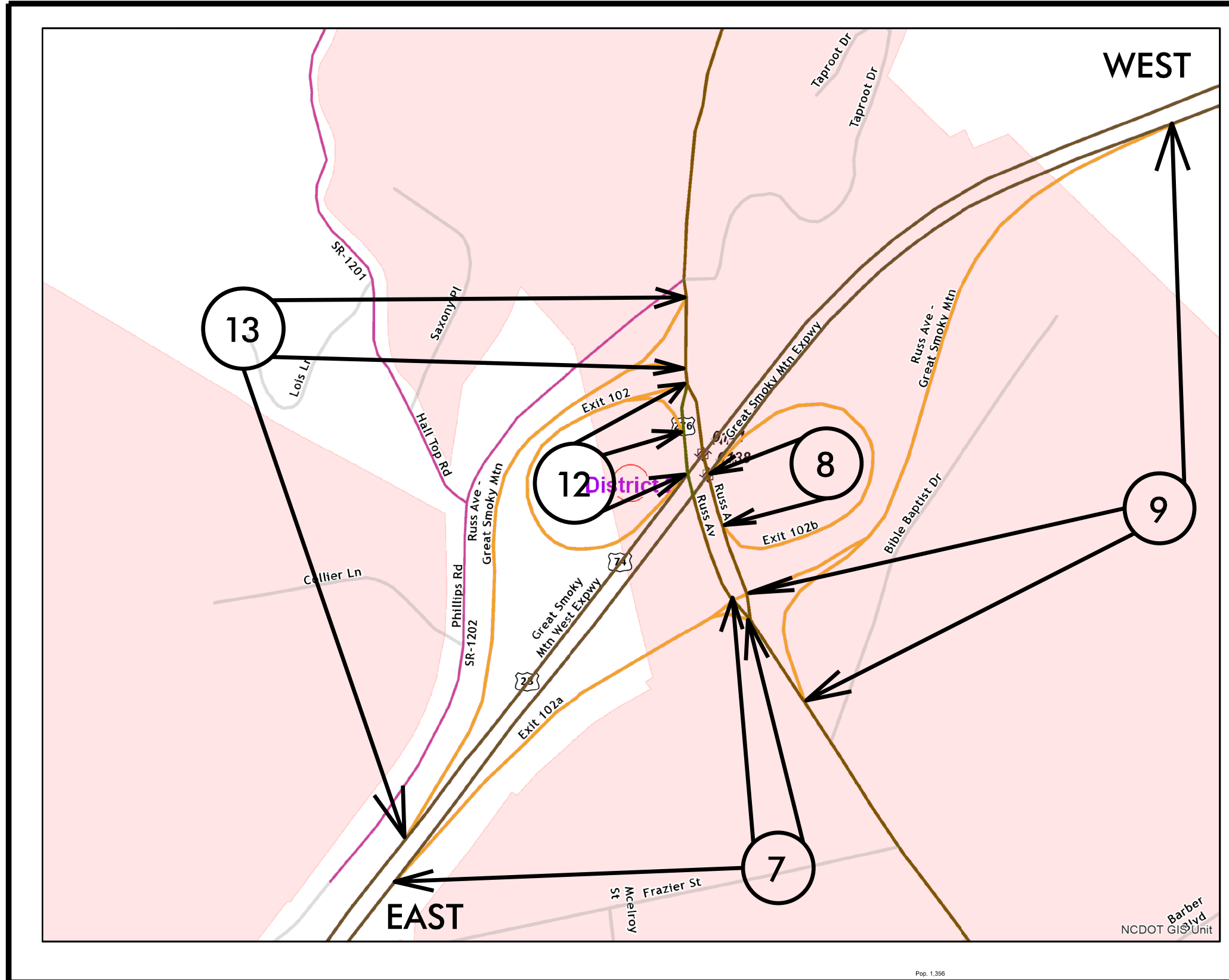
NCDOT GIS Unit

PROJECT REFERENCE NO.	SHEET NO.
2019CPT.14.05.10441,ETC	4
STATE PROJECT	F.A. PROJECT NO.
	DESCRIPTION

HAYWOOD COUNTY

TIP PROJECT: N/A

CONTRACT: C204188



EB EXIT 102A MAP 7



EB EXIT 102B MAP 8



EB EXIT 102 MAP 9



WB EXIT 102 MAP 12



WB EXIT 102 MAP 13



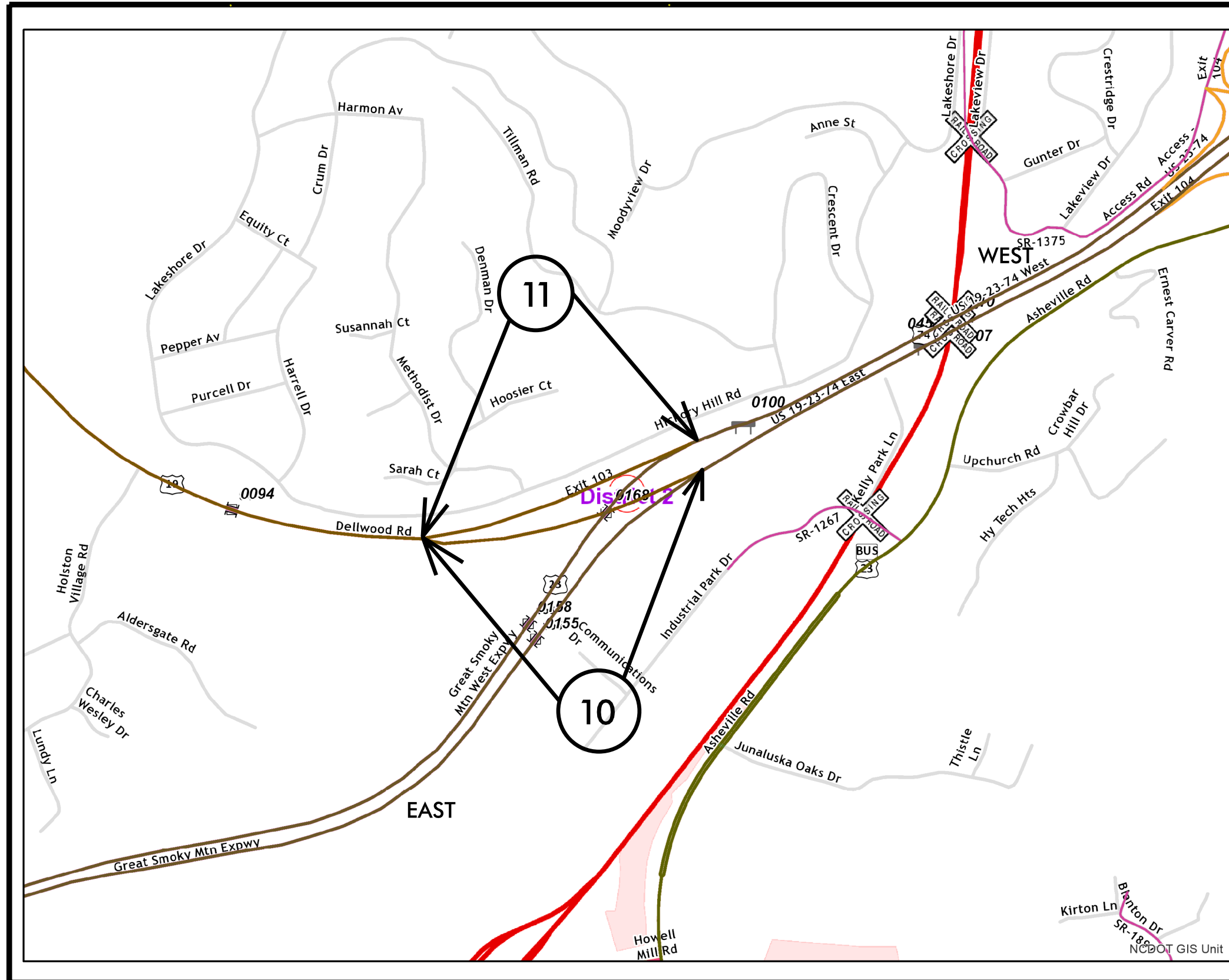
Barber
NCDOT GIS Unit

TIP PROJECT: N/A

CONTRACT: C204188

HAYWOOD COUNTY

PROJECT REFERENCE NO.		SHEET NO.
2019CPT.14.05.10441,ETC		5
STATE PROJECT	F.A. PROJECT NO.	DESCRIPTION



EB EXIT 103 MAP 10



WB EXIT 103 MAP 11

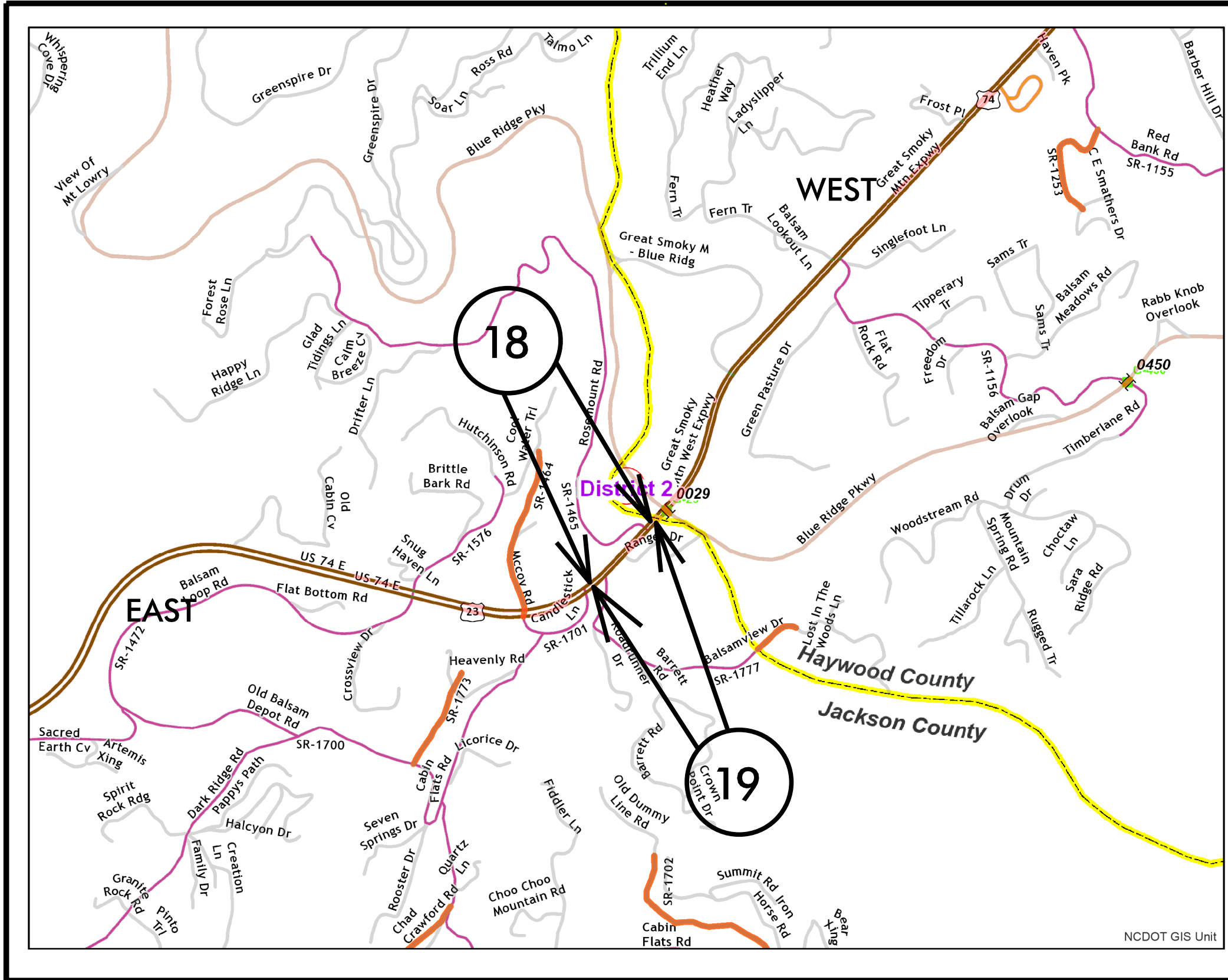


JACKSON COUNTY

PROJECT REFERENCE NO.	SHEET NO.
2019CPT.14.05.10501.ETC	6
STATE PROJECT	F.A. PROJECT NO.
DESCRIPTION	

TIP PROJECT: NA

CONTRACT: C204188



US 19-74 E MAP 18



BEG

END

US 19-74 W MAP 19



BEG

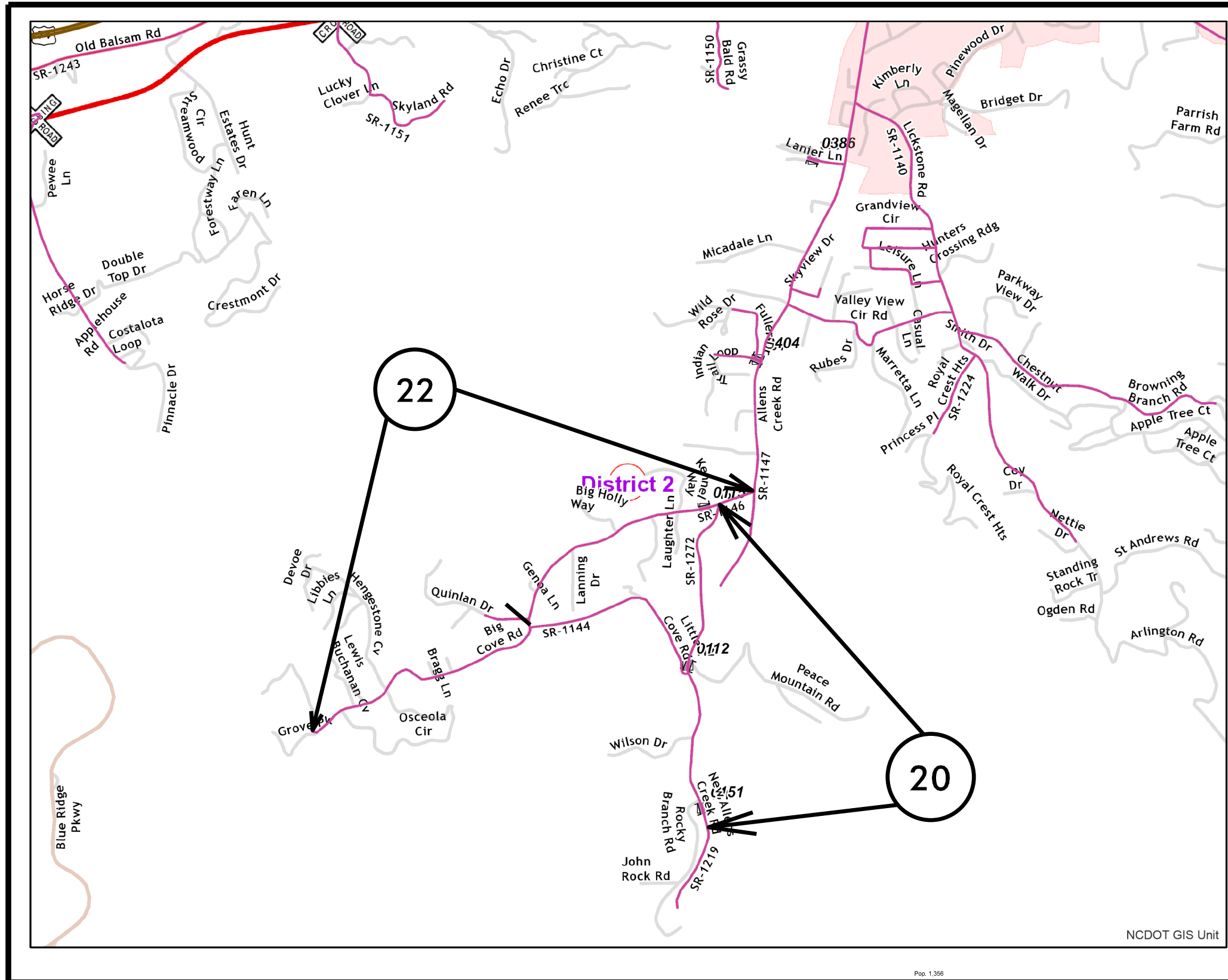
END

CONTRACT: C204188

TIP PROJECT: N/A

HAYWOOD COUNTY

PROJECT REFERENCE NO.		SHEET NO.
2019CPT.14.05.20441.ETC		7
STATE PROJECT	F.A. PROJECT NO.	DESCRIPTION



SR-1272 MAP 20



BEG

END

SR-1147 MAP 22



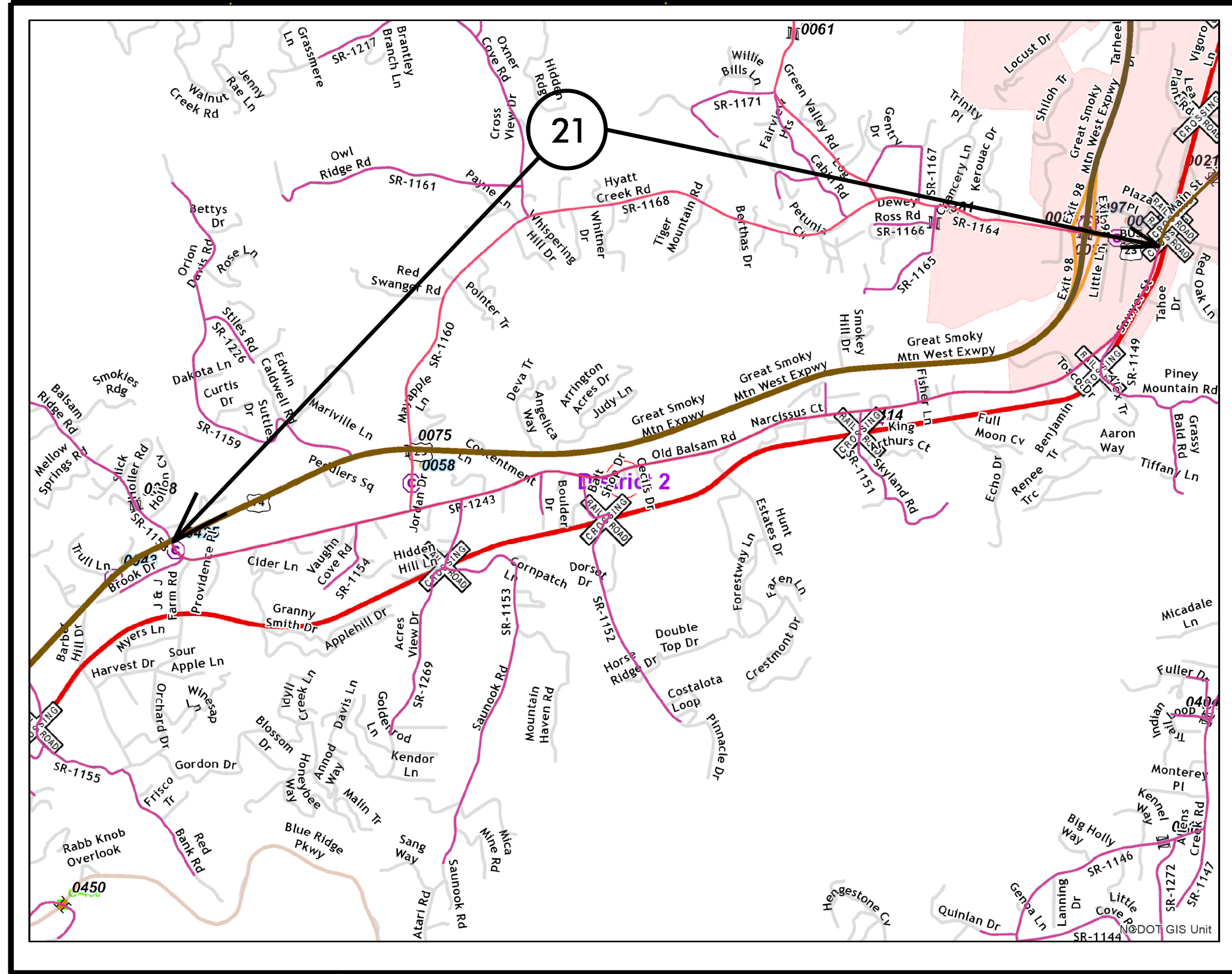
BEG

END

CONTRACT: C204188 TIP PROJECT: N/A

HAYWOOD COUNTY

PROJECT REFERENCE NO.	SHEET NO.
2019CPT.14.05.20441.ETC	8
STATE PROJECT	F.A. PROJECT NO.
	DESCRIPTION



SR-1243 MAP 21



BEG

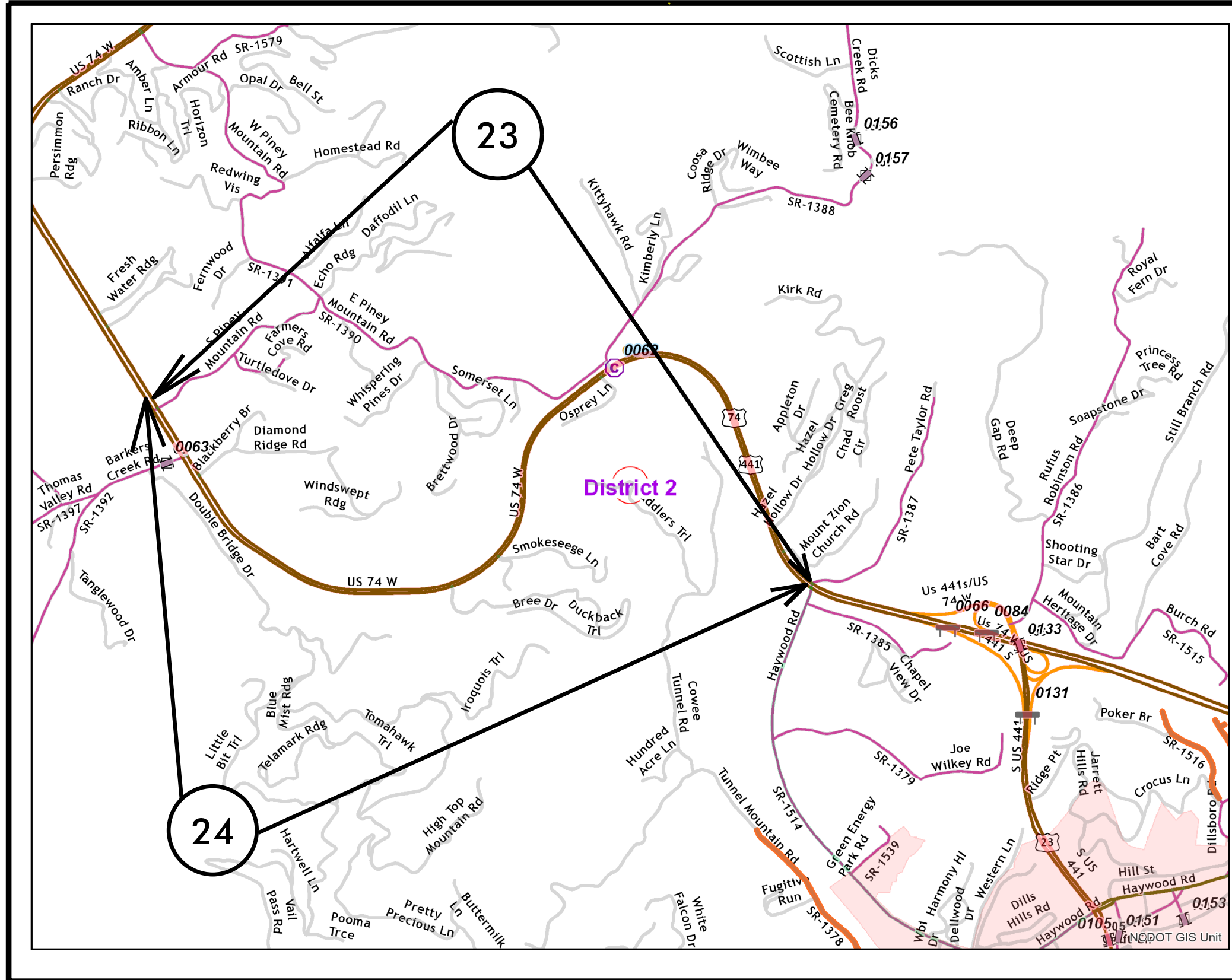
END

JACKSON COUNTY

PROJECT REFERENCE NO.	SHEET NO.
2019CPT.14.05.10501.1, ETC	9
STATE PROJECT	F.A. PROJECT NO.
	DESCRIPTION

TIP PROJECT: N/A

CONTRACT: C204188



US 74/441 W MAP 23



BEG END

US 74/441 E MAP 24



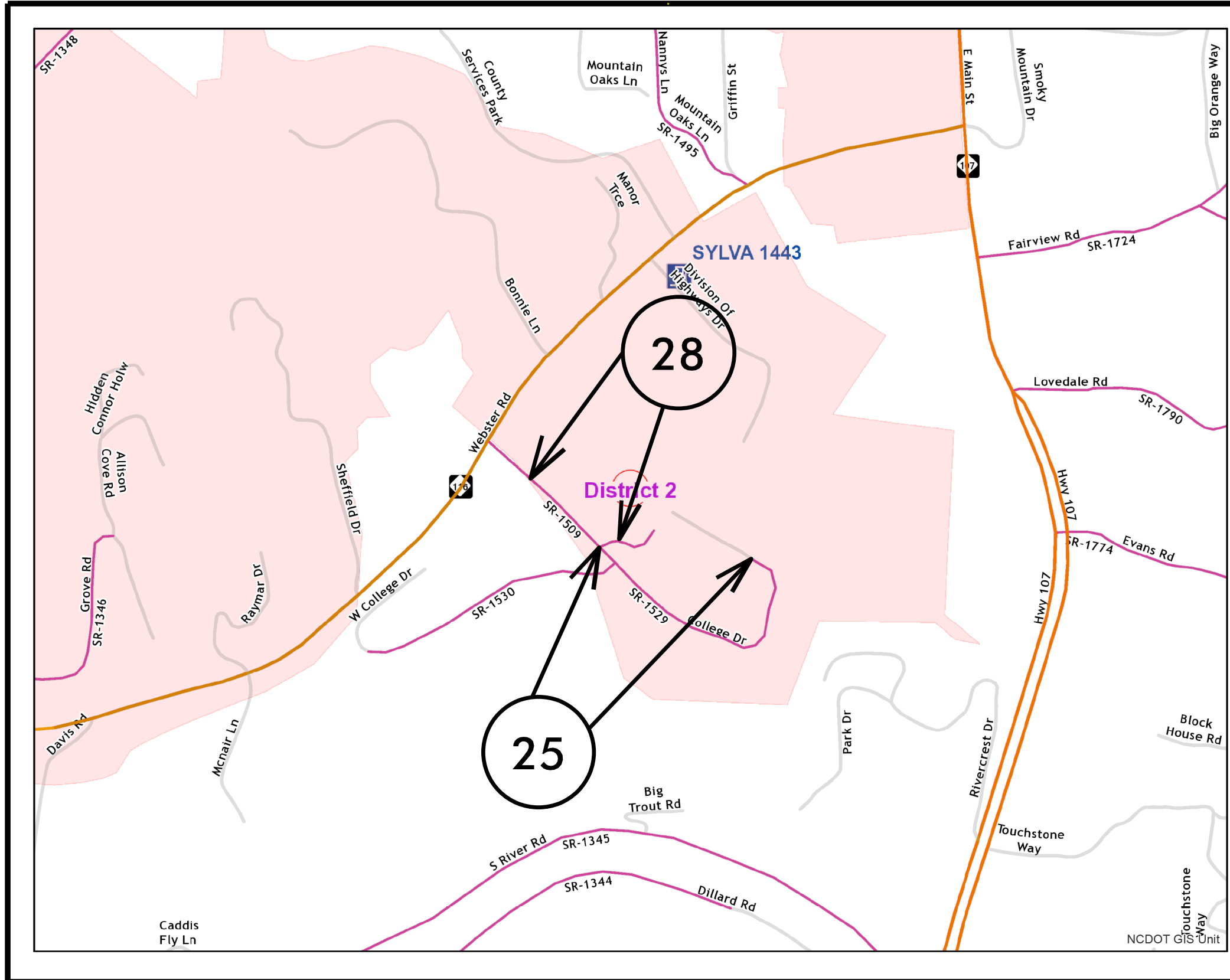
BEG END

JACKSON COUNTY

PROJECT REFERENCE NO.		SHEET NO.
2019CPT.14.05.20501,ETC		10
STATE PROJECT	F.A. PROJECT NO.	DESCRIPTION

TIP PROJECT: N/A

CONTRACT: C204188



SR-1509 MAP 25



BEG

END

SR-1529 MAP 28



BEG

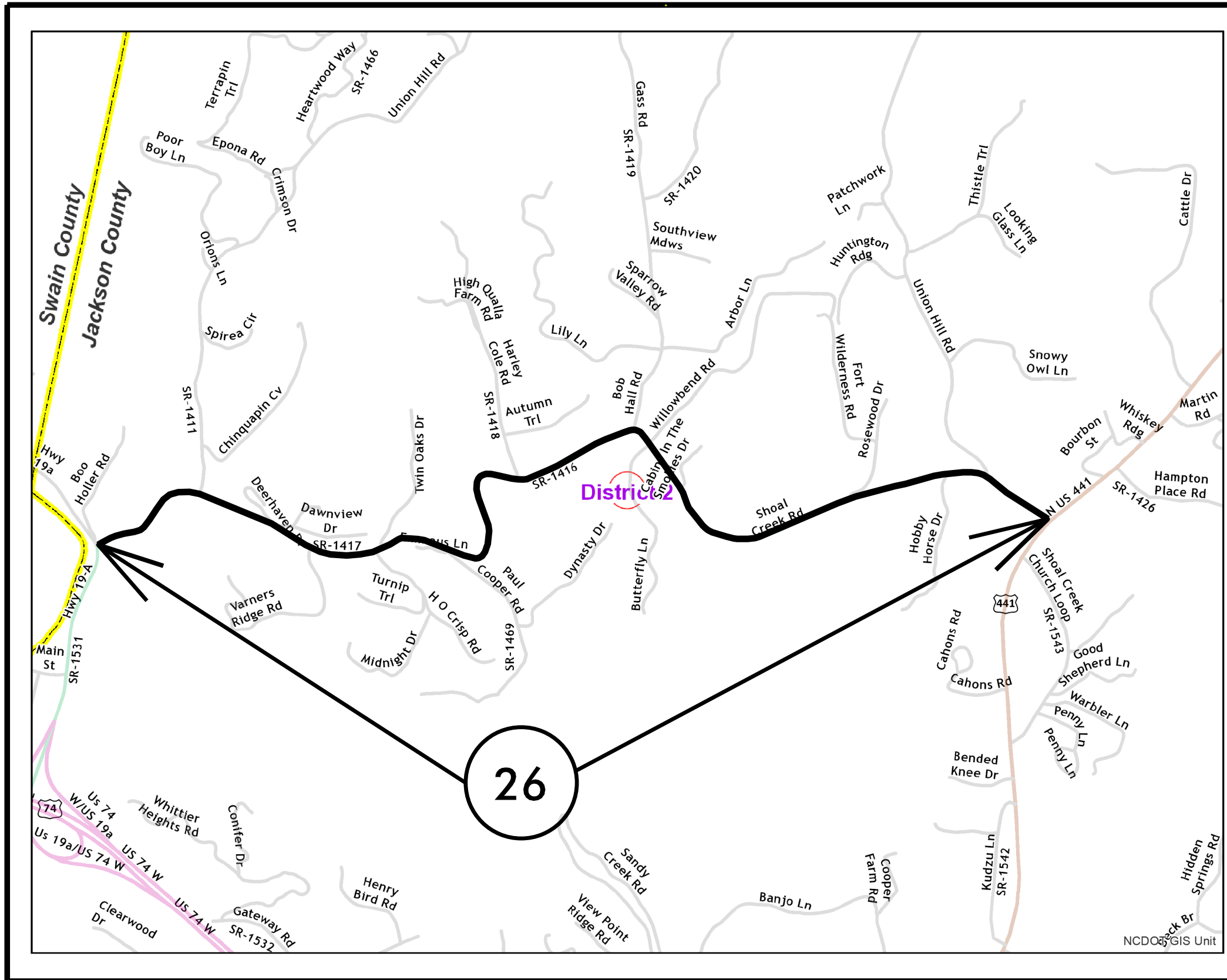
END

JACKSON COUNTY

PROJECT REFERENCE NO.		SHEET NO.
2019CPT.14.05.20501,ETC		11
STATE PROJECT	F.A. PROJECT NO.	DESCRIPTION
		26

TIP PROJECT: N/A

CONTRACT: C204188



SR-1416
MAP 26



BEG

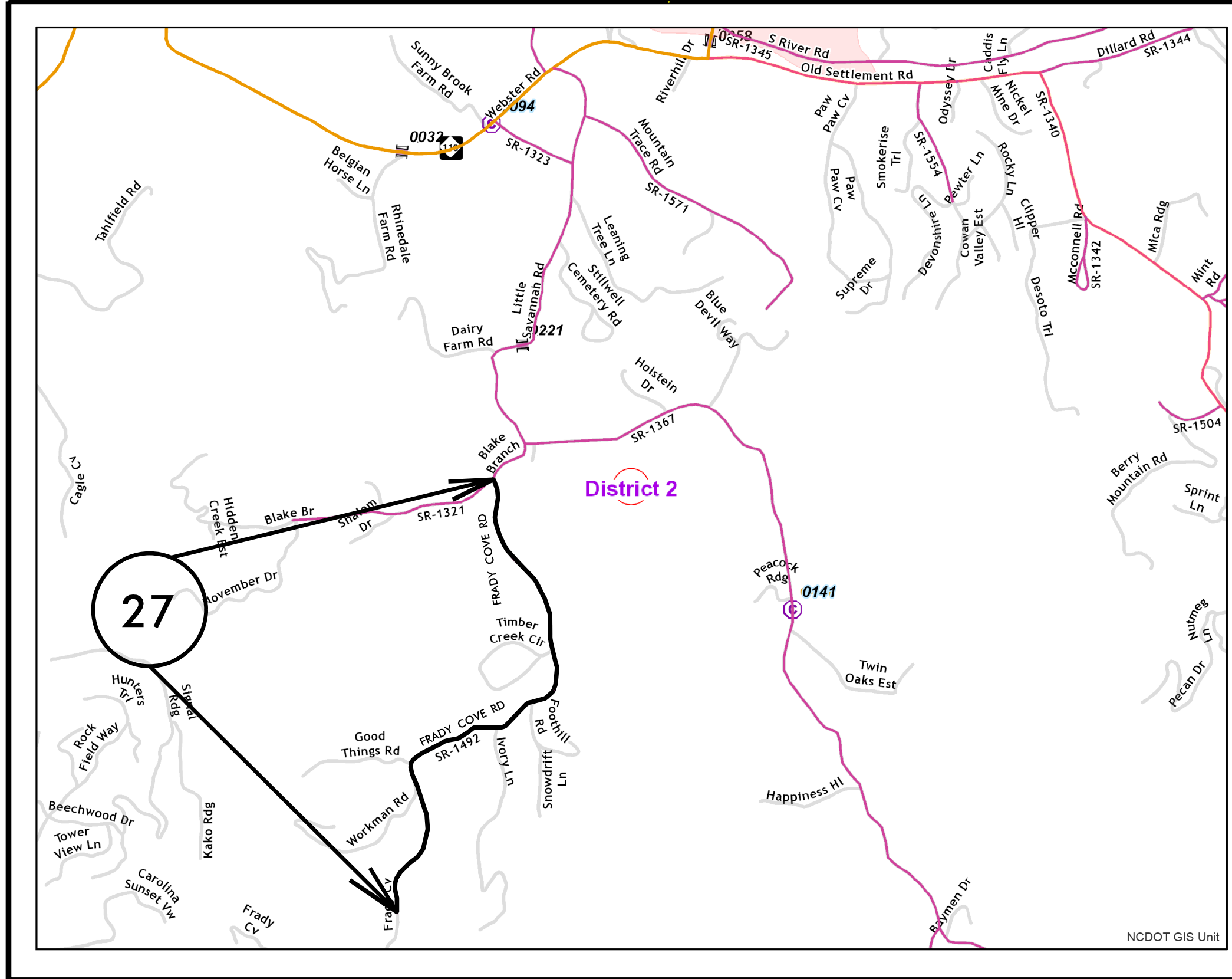
END

JACKSON COUNTY

PROJECT REFERENCE NO.		SHEET NO.
2019CPT.14.05.20501.ETC		12
STATE PROJECT	F.A. PROJECT NO.	DESCRIPTION

TIP PROJECT: N/A

CONTRACT: C204188



SR-1492 MAP 27



BEG

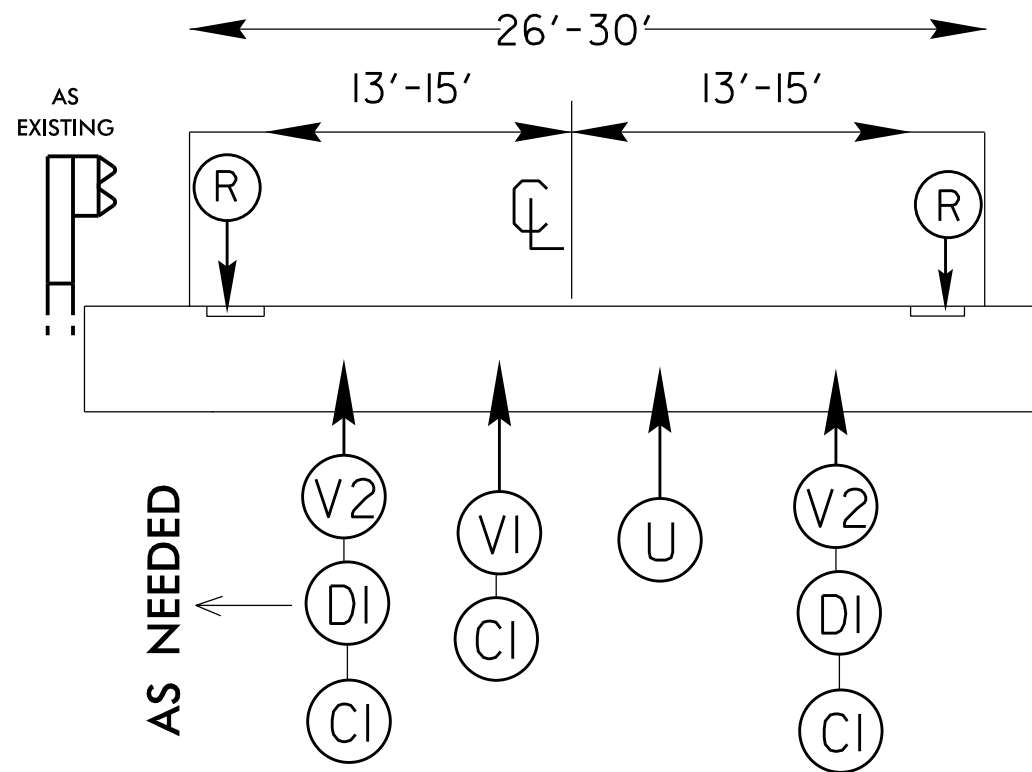
END

NCDOT GIS Unit

050197

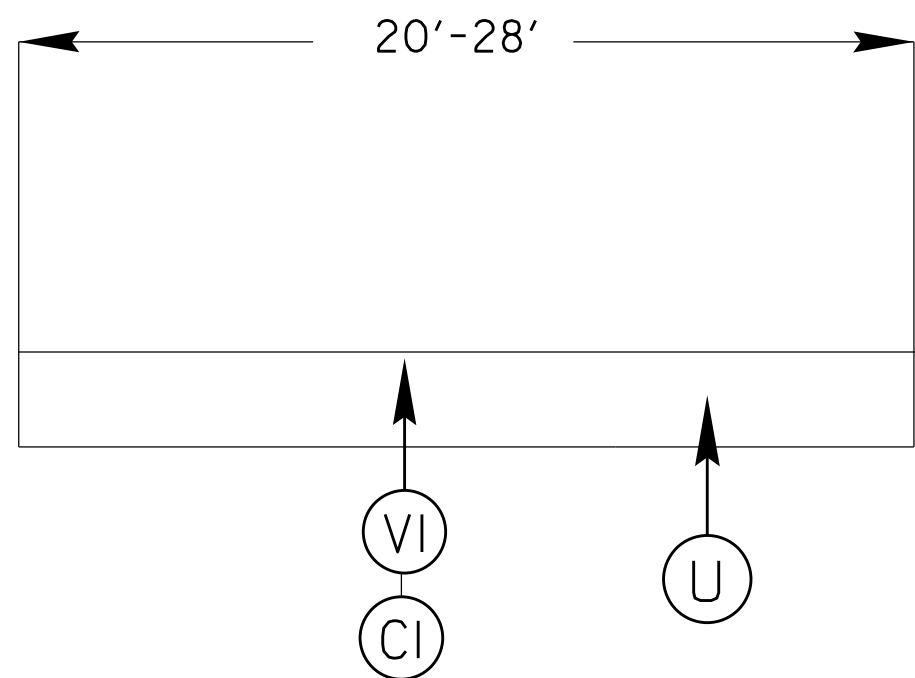
PROJECT REFERENCE NO.		SHEET NO.
2019CPT.14.05.10441,ETC		14
STATE PROJECT	F.A. PROJECT NO.	DESCRIPTION
2019CPT.14.05.10501,ETC		
2019CPT.14.05.20441,ETC		

TYPICAL 1

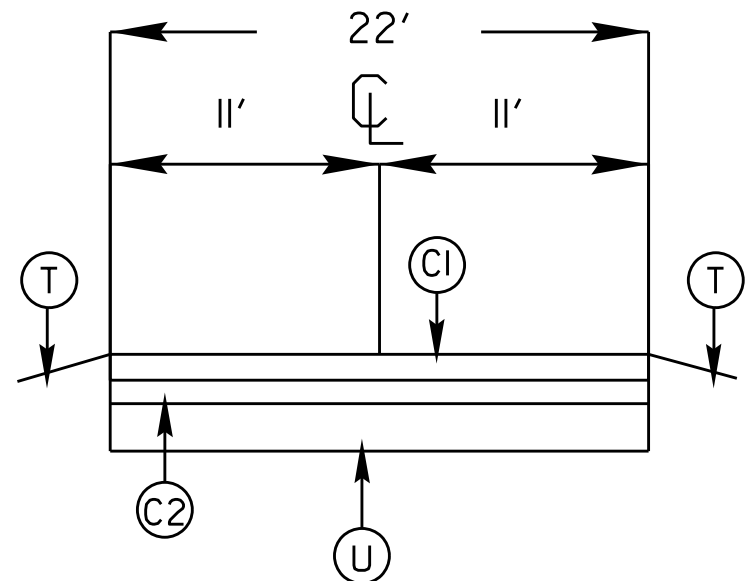


* MILLING NOTE = 4 1/2" ON INSIDE LANE FOR DISTRESSED ONLY:

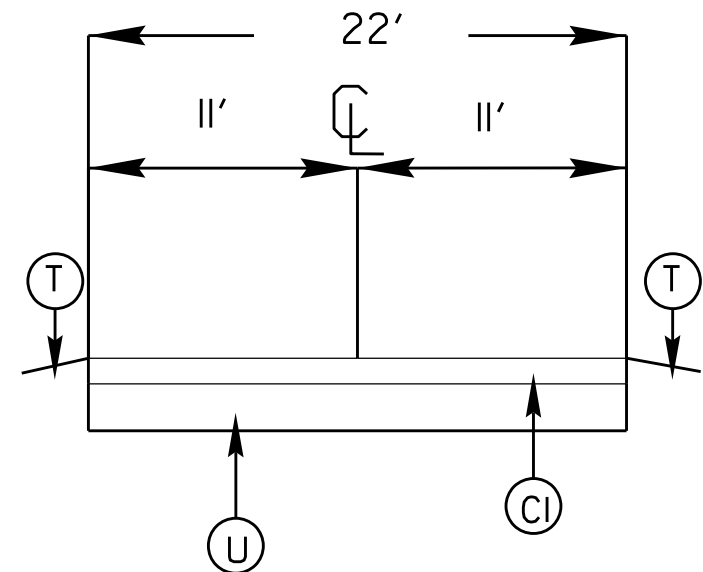
TYPICAL 2



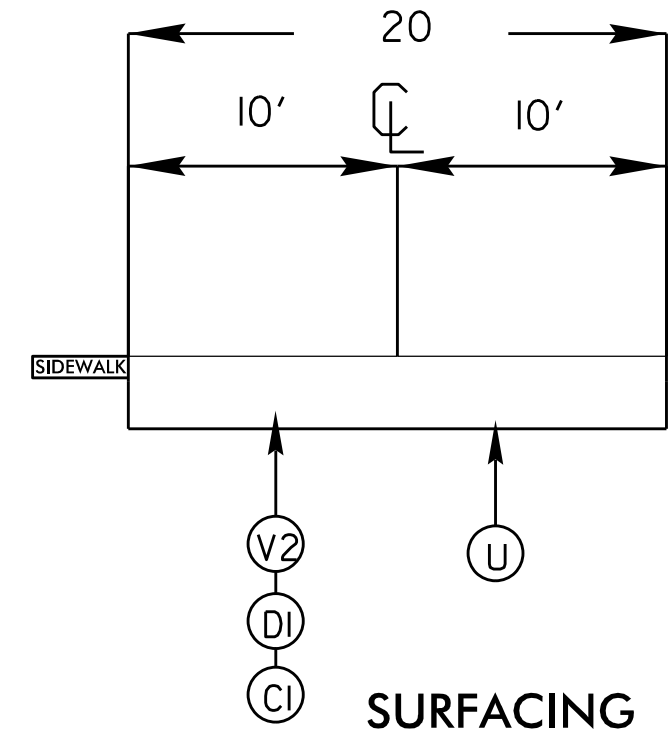
TYPICAL 3



TYPICAL 4



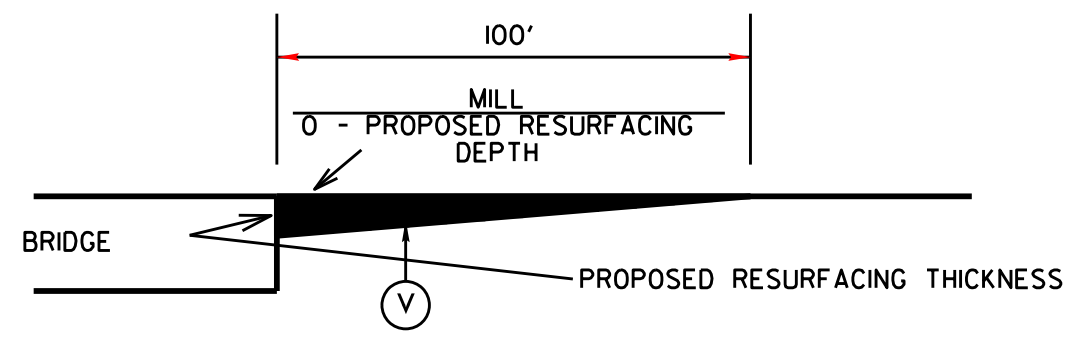
TYPICAL 5



SURFACING SCHEDULE

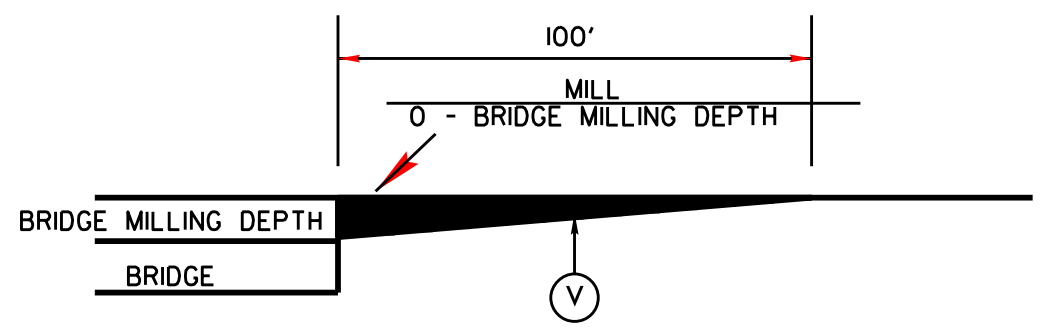
ITEM NO	DESCRIPTION
C1	PROP. APPROX. 1 1/2" ASPHALT CONCRETE SURFACE COURSE, TYPE S9.5C AT AN AVERAGE RATE OF 168 LBS.PER.SQ.YD
C2	PROP. APPROX. 3/4" ASPHALT CONCRETE SURFACE COURSE, (LEVELING) TYPE S9.5B AT AN AVERAGE RATE OF 82 1/2LBS.PER.SQ.YD
D1	PROP. APPROX. 3" ASPHALT CONCRETE INTERMEDIATE COURSE,TYPE I19.0C,AT AN AVERAGE RATE OF 342 LBS PER SQ.YD.
R	MILLED RUMBLE STRIPS
T	SHOULDER RECONSTRUCTION
U	EXISTING ASPHALT
V1	MILLED ASPHALT PAVEMENT 1 1/2" IN DEPTH IN LOCATIONS AS DIRECTED BY PROJECT ENGINEER
V2	MILLED ASPHALT PAVEMENT 4 1/2" IN DEPTH IN LOCATIONS AS DIRECTED BY PROJECT ENGINEER

PROJECT REFERENCE NO.		SHEET NO.
2019CPT.14.05.10441.ETC		15
STATE PROJECT	F.A. PROJECT NO.	DESCRIPTION



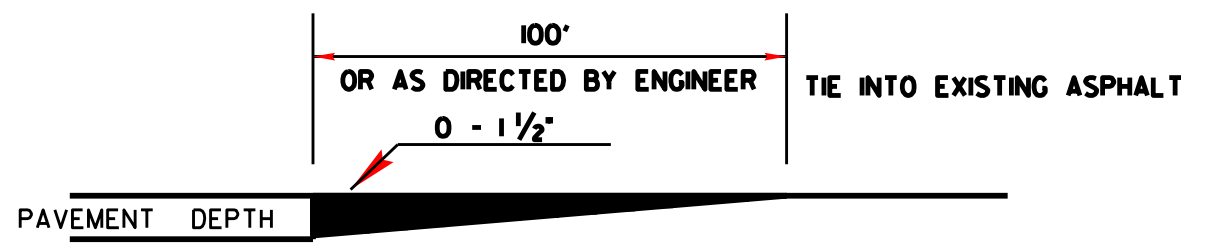
MILLING DETAIL AT BRIDGE APPROACHES

**WHERE BRIDGES WILL NOT BE RESURFACED.
THIS WILL BE PAID FOR AS 0"- 1 1/2" MILLING.**



MILLING DETAIL AT BRIDGE APPROACHES

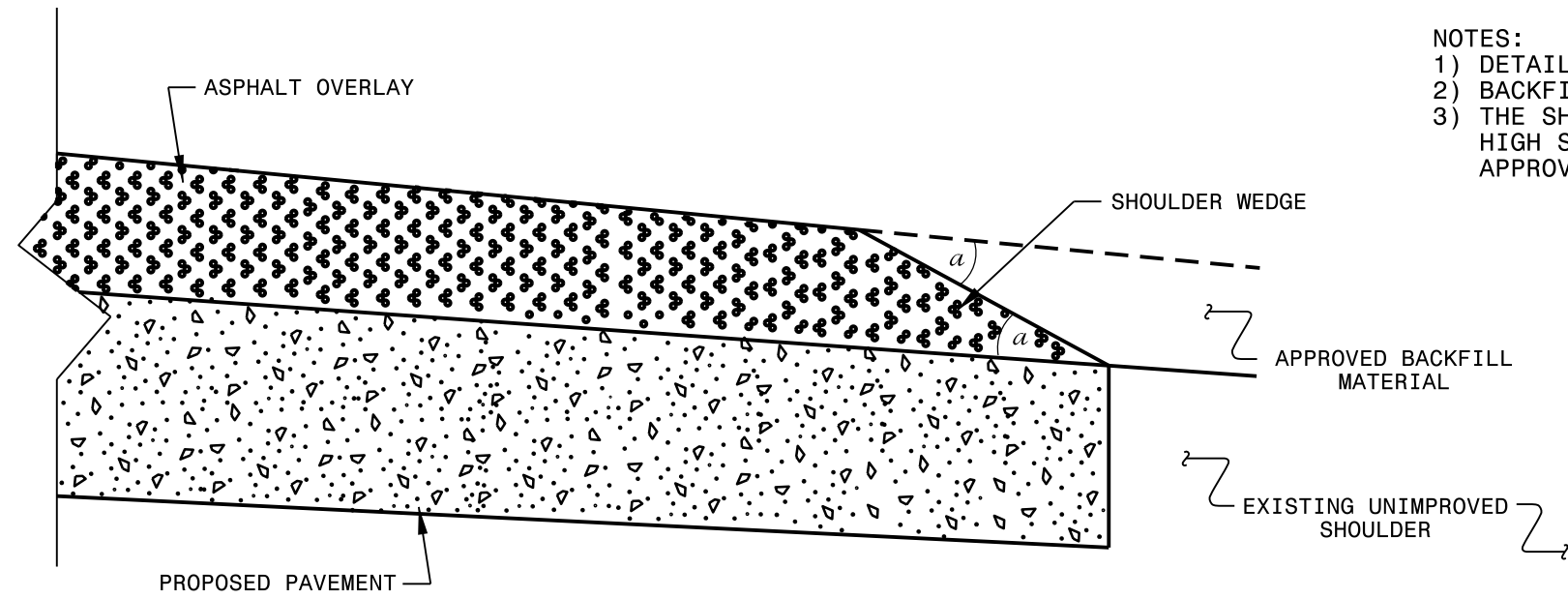
**WHERE BRIDGES WILL BE MILLED THEN RESURFACED.
THIS WILL BE PAID FOR AS 0"- 1 1/2" MILLING.**



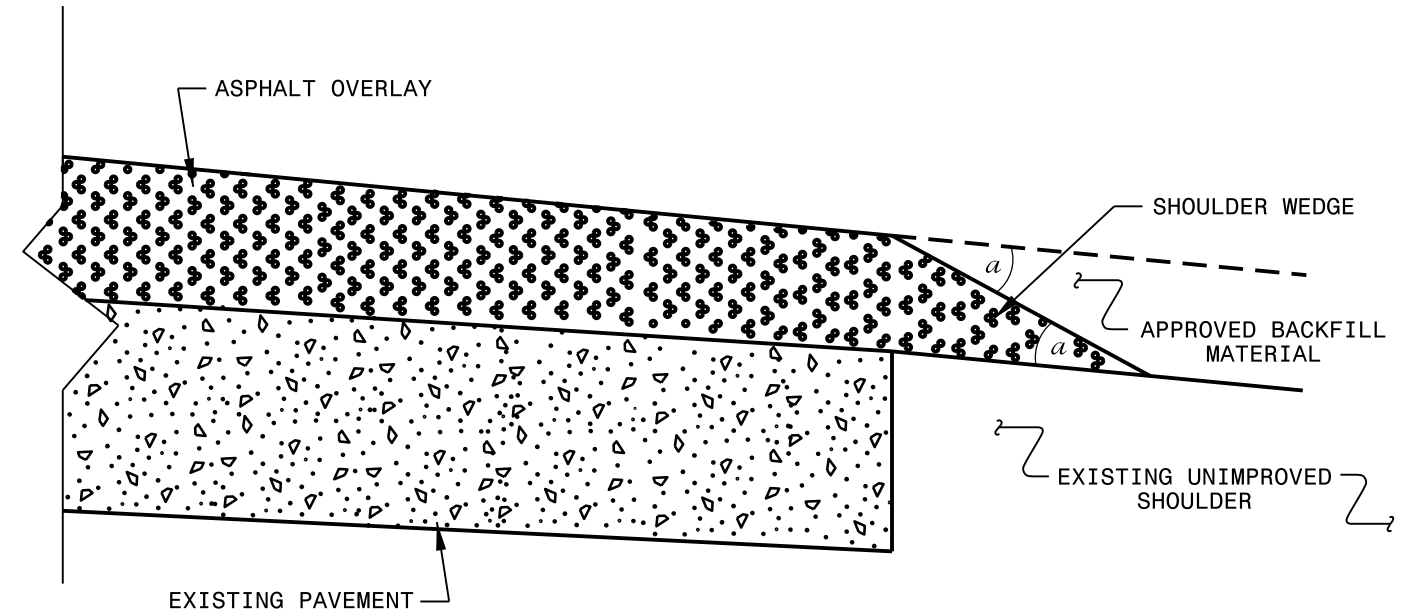
DETAIL TO TIE INTO EXIST PAVEMENT

**THE CONTRACTOR'S ATTENTION IS DIRECTED TO THE FACT THAT HE WILL BE REQUIRED TO MILL THE EXISTING ASPHALT PAVEMENT TO ENSURE A PROPER TIE-IN WITH THE EXISTING SURFACE AT THE BEGINNING, END AND Y LINES OF EACH MAP.
THIS WILL BE PAID FOR AS INCIDENTAL MILLING.**

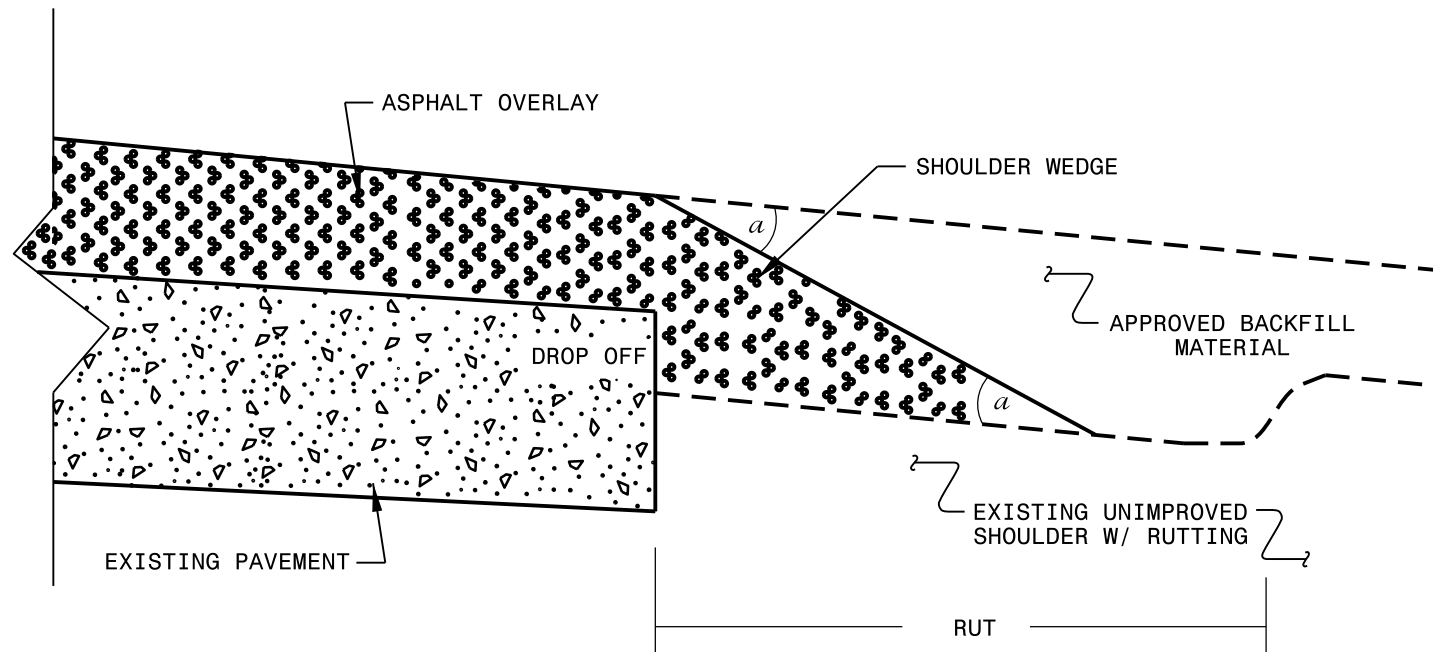
- NOTES:
 1) DETAIL DOES NOT APPLY TO OGAFB AND ULTRA-THIN BONDED WEARING COURSE.
 2) BACKFILL SHOULDER WITH APPROVED MATERIAL.
 3) THE SHOULDER WEDGE DEVICE MAY BE DISENGAGED AT PAVED DRIVEWAYS, SIDE STREETS, HIGH SHOULDERS, AND OTHER LOCATIONS NOT FEASIBLE TO CONSTRUCT AS APPROVED BY THE ENGINEER.



SHOULDER WEDGE DETAIL
 (Resurfacing Projects w/ Widening or
 with Existing Paved Shoulder having no dropoffs)



SHOULDER WEDGE DETAIL
 (Resurfacing Projects w/ NO Widening)



SHOULDER WEDGE DETAIL
 (Resurfacing Adjacent to
 Rutted Shoulder)

- SHOULDER WEDGE ANGLE = 30°

CONTRACT STANDARDS
 AND DEVELOPMENT UNIT
 Office 919-707-6950 FAX 919-250-4119

**SHOULDER WEDGE
 DETAILS**

ORIGINAL BY: T.SPELL DATE: 7-19-11
 MODIFIED BY: DATE: 2/2/16
 CHECKED BY: DATE:
 FILE SPEC.: s:usr/details/stand/shoulderwedge1.dgn

DOCUMENT NOT CONSIDERED FINAL
 UNLESS ALL SIGNATURES COMPLETED

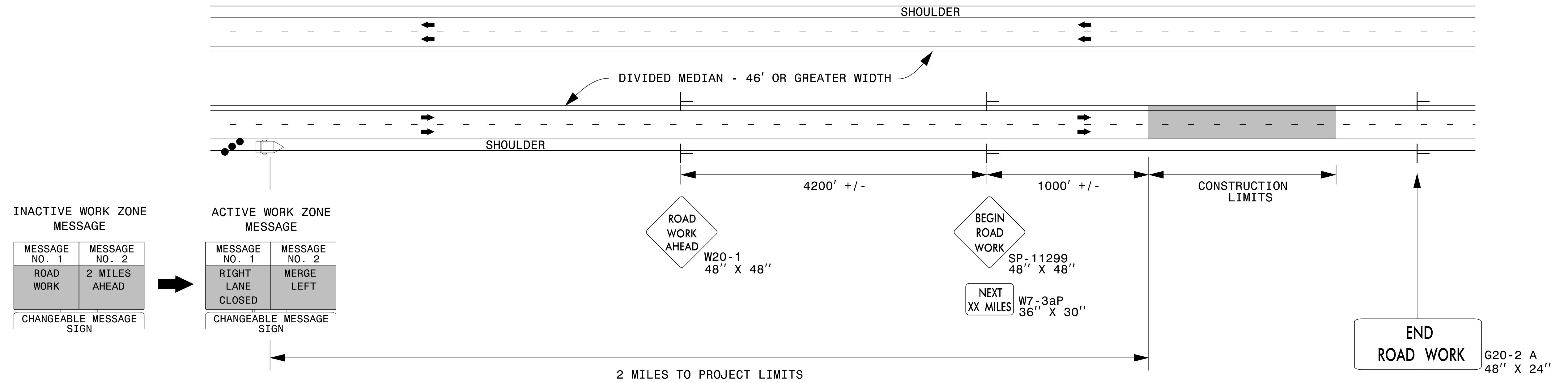
\$\$\$\$\$SYTIME\$\$\$\$\$
 \$\$\$SYSDON\$\$\$\$\$
 \$\$\$USERNAME\$\$\$\$\$

PROJECT NO.	SHEET NO.	TOTAL NO.
2019CPT.14.05.10441, etc.	17	

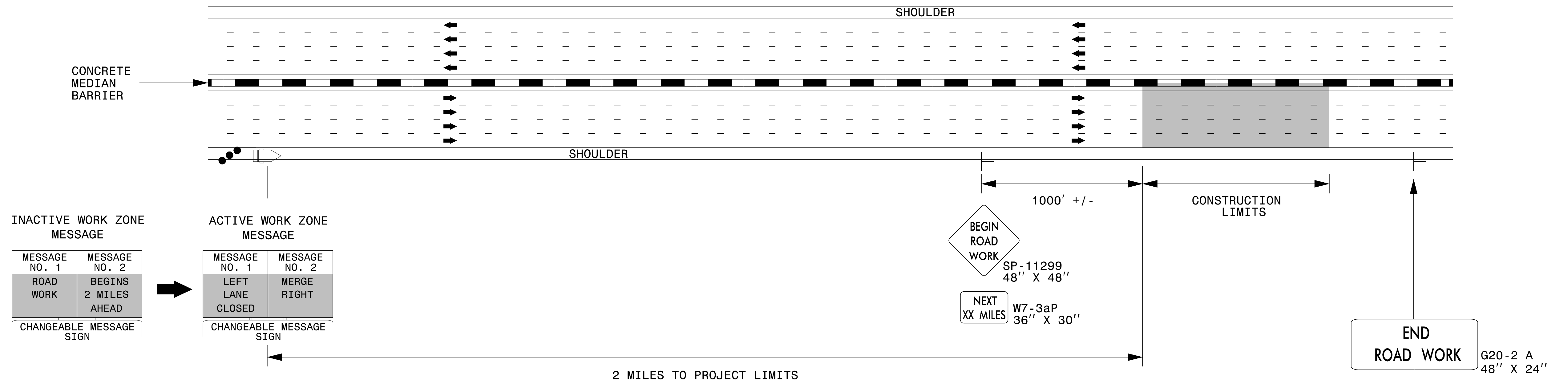
SUMMARY OF QUANTITIES

PROJECT NO	COUNTY	MAP NO	ROUTE	DESCRIPTION	TYP NO	LANES	LANE TYPE	FINAL SURFACE TESTING REQUIRED	WARM MIX ASPHALT REQUIRED	LENGTH	WIDTH	124500000-E	129700000-E	130800000-E	150300000-E	152000000-E	152300000-E	157500000-E	170400000-E	184000000-E	284500000-N	525500000-N		
												SHOULDER RECONSTRUCTION	4.5" MILLING	1 1/2" MILLING	0"-1 1/2" MILLING	INTERMEDIATE COURSE, I19.0C	SURFACE COURSE, LEVELING, S9.5B	SURFACE COURSE, S9.5C	ASPHALT BINDER FOR PLANT MIX	PATCHING EXISTING PAVEMENT	MILLED RUMBLE STRIPS (ASPHALT CEMENT CONCRETE)	ADJ. OF METER OR VALVE BOX	PORTABLE LIGHTING	
										MI	FT	SMI	SY	SY	SY	TONS	TONS	TONS	TONS	TONS	LF	EA	EA	
2019CPT.14.05.10441	Haywood	1	US 74 WEST (WAYNESVILLE BYPASS)	FROM NC-209 TO JACKSON CL	1	2	MD	NO	NO	10.19	29		89,672	89,672	2,100	16,833	8,252	1,510			107,606			
TOTAL FOR MAP NO. 1																								
2019CPT.14.05.10441	Haywood	2	US 74 EAST (WAYNESVILLE BYPASS)	FROM JACKSON CL TO NC-209	1	2	MD	NO	NO	10.21	29		89,848	89,848	2,100	17,182	8,565	1,545			107,818			
TOTAL FOR MAP NO. 2																								
2019CPT.14.05.10441	Haywood	3	EASTBOUND EXIT 98 OFF RAMP	FROM US-74E TO .11 MILE EAST OF US-74E	2	1	MD	NO	NO	0.11	24			1,549			147	9						
TOTAL FOR MAP NO. 3																								
2019CPT.14.05.10441	Haywood	4	EASTBOUND EXIT 98 ON RAMP	FROM .11 MILE EAST OF US-74E TO US-74E	2	1	MD	NO	NO	0.11	23			1,484			151	9						
TOTAL FOR MAP NO. 4																								
2019CPT.14.05.10441	Haywood	5	EASTBOUND EXIT 100 OFF RAMP	FROM US-74E TO .09 MILES EAST OF US-74E	2	1	MD	NO	NO	0.09	25			1,320			135	8						
TOTAL FOR MAP NO. 5																								
2019CPT.14.05.10441	Haywood	6	EASTBOUND EXIT 100 ON RAMP	FROM .09 MILES EAST OF US-74E TO US-74E	2	1	MD	NO	NO	0.09	23			1,214			126	8						
TOTAL FOR MAP NO. 6																								
2019CPT.14.05.10441	Haywood	7	EASTBOUND EXIT 102A OFF RAMP	FROM US-74E TO US-276	2	1	MD	NO	NO	0.15	27			2,376			217	13						
TOTAL FOR MAP NO. 7																								
2019CPT.14.05.10441	Haywood	8	EASTBOUND EXIT 102B OFF RAMP	FROM US-74E TO US-276	2	2	MD	NO	NO	0.17	28			2,793			252	15						
TOTAL FOR MAP NO. 8																								
2019CPT.14.05.10441	Haywood	9	EASTBOUND EXIT 102 ON RAMP	FROM US-276 TO US-74E	2	1	MD	NO	NO	0.34	24			4,787			468	28						
TOTAL FOR MAP NO. 9																								
2019CPT.14.05.10441	Haywood	10	EASTBOUND EXIT 103 ON RAMP	FROM .18 MILES WEST OF US-74E TO US-74E	2	1	MD	NO	NO	0.18	22			2,323			233	14				*		
TOTAL FOR MAP NO. 10																								
2019CPT.14.05.10441	Haywood	11	WESTBOUND EXIT 103 OFF RAMP	FROM US-74W TO .2 MILES WEST OF US-74W	2	1	MD	NO	NO	0.2	24			2,816			277	17						
TOTAL FOR MAP NO. 11																								
2019CPT.14.05.10441	Haywood	12	WESTBOUND EXIT 102 OFF RAMP	FROM US-74W TO US-276	2	1	MD	NO	NO	0.18	27			2,851			262	16						
TOTAL FOR MAP NO. 12																								
2019CPT.14.05.10441	Haywood	13	WESTBOUND EXIT 102 ON RAMP	FROM US-276 TO US-74W	2	1	MD	NO	NO	0.32	21			3,942			356	21						
TOTAL FOR MAP NO. 13																								
2019CPT.14.05.10441	Haywood	14	WESTBOUND EXIT 100 OFF RAMP	FROM US-74W TO .11 MILES WEST OF US-74 W	2	1	MD	NO	NO	0.11	24			1,549			152	9						
TOTAL FOR MAP NO. 14																								
2019CPT.14.05.10441	Haywood	15	WESTBOUND EXIT 100 ON RAMP	FROM .11 MILES EAST OF US-74W TO US-74W	2	1	MD	NO	NO	0.11	24			1,549			163	10						
TOTAL FOR MAP NO. 15																								
2019CPT.14.05.10441	Haywood	16	WESTBOUND EXIT 98 OFF RAMP	FROM US-74W TO .11MILES WEST OF US-74W	2	1	MD	NO	NO	0.11	24			1,549			145	9						
TOTAL FOR MAP NO. 16																								
2019CPT.14.05.10441	Haywood	17	WESTBOUND EXIT 98 ON RAMP	FROM .19 MILES EAST OF US-74W TO US-74W	2	1	MD	NO	NO	0.19	24			2,675			257	15						
TOTAL FOR MAP NO. 17																								
TOTAL FOR PROJ NO. 2019CPT.14.05.10441																							*	
2019CPT.14.05.10501	Jackson	18	US 74 WEST	FROM HAYWOOD CL TO SR-1701	1	2	MD	NO	NO	0.19	29		1,672	1,672		316	160	30			2,006			
TOTAL FOR MAP NO. 18																								
2019CPT.14.05.10501	Jackson	19	US 74 EAST	FROM SR-1701 TO HAYWOOD CL	1	2	MD	NO	NO	0.18	29		1,672	1,672		316	160	30			1,901			
TOTAL FOR MAP NO. 19																								
TOTAL FOR PROJ NO. 2019CPT.14.05.10501																								
2019CPT.14.05.20441	Haywood	20	SR-1272 (NEW ALLENS CREEK RD)	FROM SR-1146 TO EOM	3	2	2WU	NO	NO	0.82	22		1.64				595	983	99					
TOTAL FOR MAP NO. 20																								
2019CPT.14.05.20441	Haywood	21	SR-1243 (OLD BALSAM RD)	FROM US-23 BUS TO US-19	4	2	2WU	NO	NO	3.24	22		6.24				3,957	237	35			3		
TOTAL FOR MAP NO. 21																								
2019CPT.14.05.20441	Haywood	22	SR-1146 (BIG COVE RD)	FROM SR-1147 TO EOM	3	2	2WU	NO	NO	1.26	22		2.82				685	1,484	135	163				
TOTAL FOR MAP NO. 22																								
TOTAL FOR PROJ NO. 2019CPT.14.05.20441																						3		
2019CPT.14.05.10501.1	Jackson	23	US-74/441 WESTBOUND	FROM SR-1387 TO SR-1392	1	2	MD	NO	NO	2.27	26		19,976	19,976		3,820	1,846	340			23,971			
TOTAL FOR MAP NO. 23																								
2019CPT.14.05.10501.1	Jackson	24	US-74/441 EASTBOUND	FROM SR-1392 TO SR-1514	1	2	MD	NO	NO	2.29	28		20,152	20,152		3,854	1,862	345			24,182			
TOTAL FOR MAP NO. 24																								
TOTAL FOR PROJ NO. 2019CPT.14.05.10501.1																							48,153	
2019CPT.14.05.20501	Jackson	25	SR-1529 (COLLEGE DR)	FROM SR-1530 TO EOM	5	2	2WU	NO	NO	0.26	20		3,051			570	278	44	27			1		
TOTAL FOR MAP NO. 25																								
2019CPT.14.05.20501	Jackson	26	SR-1416 (SHOAL CREEK RD)	FROM SR-1531 TO US-441	3	2	2WU	NO	NO	2.23	18		4.46			992	2,151	196	32					
TOTAL FOR MAP NO. 26																								
2019CPT.14.05.20501	Jackson	27	SR-1492 (FRADY COVE RD)	FROM SR-1321 TO EOP	3	2	2WU	NO	NO	1.07	18		2.14			500	1,032	95						
TOTAL FOR MAP NO. 27																								
2019CPT.14.05.20501	Jackson	28	SR-1509 (COLLEGE DR)	FROM PVMT JOINT @ NC-116 TO SR-1530	5	2	2WU	NO	NO	0.08	20		939			176	87	14						
TOTAL FOR MAP NO. 28																								
2019CPT.14.05.20501	Jackson	29	SR-1340 (OLD SETTLEMENT RD)	FROM NC-116 TO NC-107	3	2	2WU	NO	NO	2.4	18		4.80			1,068	2,358	213	160					
TOTAL FOR MAP NO. 29																								
TOTAL FOR PROJ NO. 2019CPT.14.05.20501																							1	
GRAND TOTAL																								
										39.15		22.10	226,982	257,769	4,200	43,067	3,840	36,516	5,034	417	267,484	4	1	

DIVIDED MEDIANS WITH WIDTHS 46' OR GREATER



DIVIDED MEDIANS WITH WIDTHS LESS THAN 46' OR WITH PERMANENT MEDIAN BARRIER

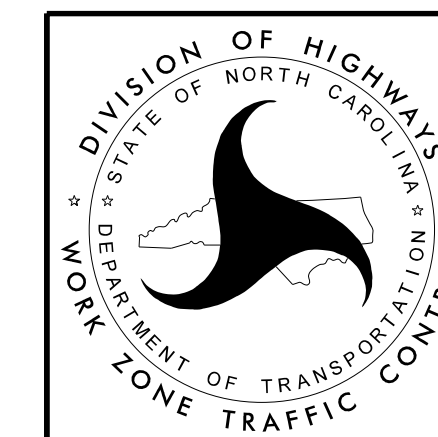


NOTES:

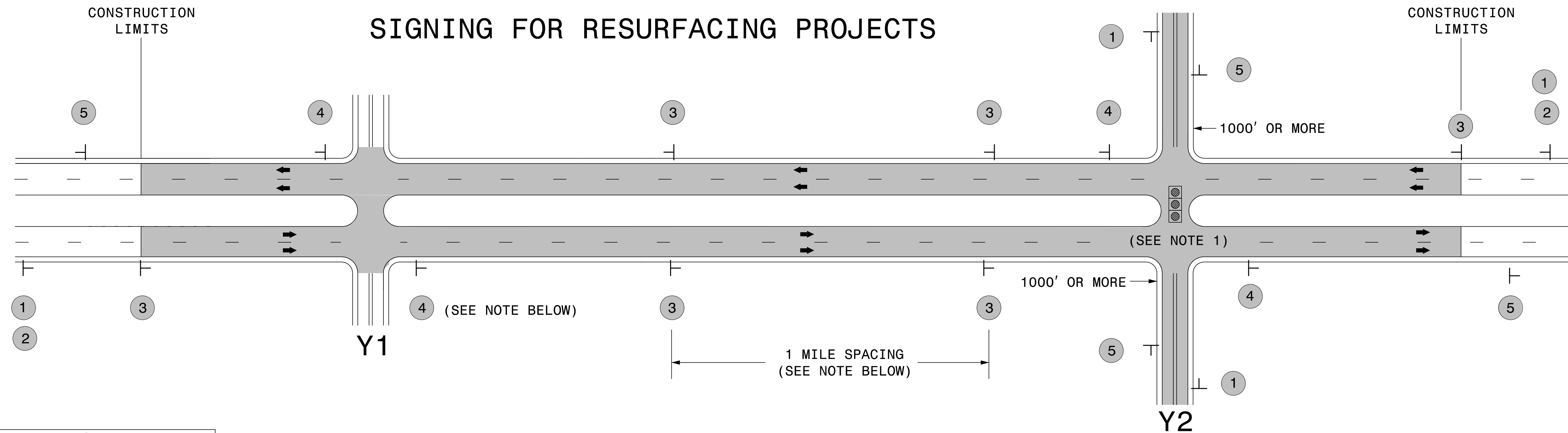
- 1) LATERAL CLEARANCE AT ALL SIGN LOCATIONS SHALL BE 6' AS MEASURED FROM THE EDGE OF PAVEMENT.
- 2) MOUNT SIGNS THAT ARE LARGER THAN 10 SQUARE FEET IN AREA ON TWO OR MORE WOOD OR U-CHANNEL SUPPORTS. PERFORATED SQUARE TUBING SUPPORT SYSTEMS MAY SUPPORT LARGER AREAS ON A SINGLE SUPPORT. FOLLOW MANUFACTURER'S RECOMMENDATIONS. THESE SYSTEMS SHALL BE NCHRP 350 COMPLIANT AND NCDOT APPROVED.
- 3) FOR MEDIAN WIDTHS LESS THAN 46' (MEASURED EDGELINE TO EDGELINE) USE THE BOTTOM DRAWING.
- 4) IF STATIONARY GENERAL WARNING SIGNS ARE USED, THEY WILL BE PAID FOR PER SECTION 104 OF THE NCDOT STANDARD SPECIFICATIONS AS EXTRA WORK.
- 5) INSTALL "ROAD WORK AHEAD" (W20-1) ALONG ENTRANCE RAMP 500' PRIOR TO RAMP TERMINAL, AND "END ROAD WORK" (G20-2a) AT THE END OF EXIT RAMP WITHIN THE WORK ZONE.
- 6) IF MILLED AREAS ARE NOT PAVED BACK BY THE END OF THE WORK DAY, PORTABLE SIGNS SHALL BE USED TO WARN DRIVERS OF THE PRESENT CONDITIONS. THESE ARE TO INCLUDE, BUT NOT LIMITED TO "ROUGH ROAD" W8-8, "UNEVEN LANES" W8-11, "GROOVED PAVEMENT" W8-15 w/MOTORCYCLE PLAQUE MOUNTED BELOW. THESE ARE TO BE DOUBLE INDICATED ON MULTI-LANE ROADWAYS WITH SPEED LIMITS 45 MPH AND GREATER AND WITH DIVIDED MEDIANS OF 46' OR GREATER. THESE PORTABLE SIGNS ARE INCIDENTAL TO THE OTHER ITEMS OF WORK INCLUDED IN THE TEMPORARY TRAFFIC CONTROL (LUMP SUM) PAY ITEM.

LEGEND

- CHANGEABLE MESSAGE SIGN (CMS)
- STATIONARY SIGN
- DIRECTION OF TRAFFIC FLOW
- TRAFFIC DRUM



**RESURFACING ADVANCE
WARNING SIGNS FOR
HIGH SPEED FACILITIES
≥ 60 MPH**

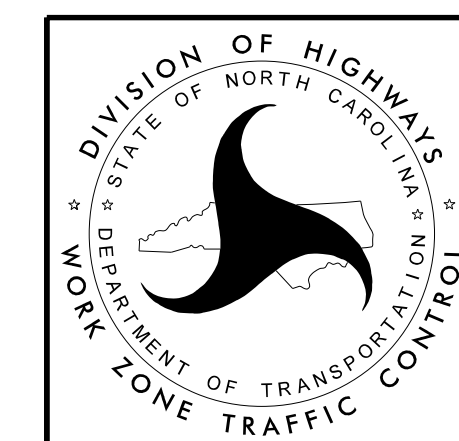


LEGEND	
┆	STATIONARY SIGN
←	DIRECTION OF TRAFFIC FLOW

MAINLINE (-L-) SIGNING

-Y- LINE SIGNING

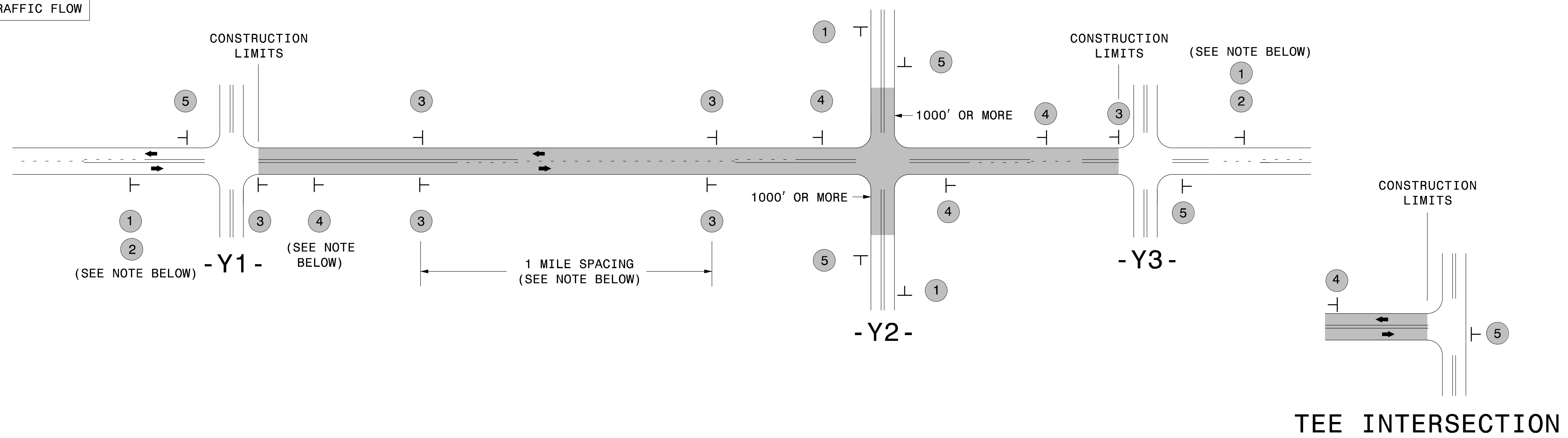
SIGNING NOTES AND PLACEMENT PER DIRECTION	MAINLINE (-L-) SIGNING		-Y- LINE SIGNING	
	1	 W20-1 48" X 48"	PLACE 1000' PRIOR TO BEGINNING OF CONSTRUCTION LIMITS. ONLY USED ON -Y- LINES IF RESURFACING LIMITS EXTEND 1000' ALONG -Y- LINE.	<p>NO REQUIRED STATIONARY SIGNING FOR THE FOLLOWING -Y- LINE CONDITIONS:</p> <ol style="list-style-type: none"> 1) LESS THAN 1000' OF RESURFACING ALONG -Y- LINE 2) SUBDIVISION ROADS 3) DEAD END ROADS <p>WHEN PAVING/CONSTRUCTION ACTIVITIES PROCEED ACROSS AN UNSIGNED -Y- LINE, ADVANCE WARNING PORTABLE SIGNS SHALL BE USED ALONG THE -Y- LINE AS SHOWN BELOW. REMOVE UPON COMPLETION OF WORK.</p> <div style="display: flex; justify-content: space-around;"> <div style="text-align: center;"> W20-1 48" X 48" </div> <div style="text-align: center;"> W20-7 A 48" X 48" </div> </div> <p>PLACED 500' IN ADVANCE OF FLAGGER. PLACED 250' IN ADVANCE OF FLAGGER.</p> <p>NOTES:</p> <ol style="list-style-type: none"> 1) MAY USE LAW ENFORCEMENT TO CONTROL TRAFFIC AT SIGNALIZED INTERSECTIONS AS DIRECTED BY THE ENGINEER. PROVIDE PORTABLE "ROAD WORK AHEAD" (W20-1) SIGNS 500' IN ADVANCE ALONG BOTH APPROACHES FROM THE SIDE STREETS WHEN PAVING PROCEEDS THROUGH THE INTERSECTION.
	2	 W7-3aP 24" X 18"	#2 SIGN ONLY USED WHEN RESURFACING LIMITS ARE 2 OR MORE MILES IN LENGTH. ROUND UP TO NEXT WHOLE NUMBER. (NO FRACTIONAL OR DECIMAL NUMBERS)	
	3	 SP 13107 48" X 48"	PLACE INITIALLY AT THE CONSTRUCTION LIMITS AND SPACED 1 MILE APART THEREAFTER. IF NO -Y- LINES EXIST, PLACE 2ND SET 1/2 MILE FROM THE CONSTRUCTION LIMITS AND THEN SPACE 1 MILE THEREAFTER.	
	4	 SP 13106 48" X 48"	THESE ARE FOR -Y- LINES THAT ARE "THROUGH" ROADWAYS. DEAD END AND SUBDIVISION ROADS ARE NOT "THROUGH" ROADWAYS. INSTALL 500' +/- FROM EACH -Y- LINE APPROACH AS SHOWN ABOVE. FOR MULTIPLE -Y- LINES THAT ARE SEPARATED BY 0.25 MILES OR LESS, TREAT AS A SINGLE UNIT AND INSTALL WITHIN 500' OF EACH APPROACH. A MAXIMUM OF 2 SIGN SETS PER MILE. DO NOT INSTALL WHEN -Y- LINES ARE WITHIN 0.5 MILES FROM "END ROAD WORK" SIGN.	
5	 G20-2 A 48" X 24"	PLACE 500' FOLLOWING THE END OF CONSTRUCTION LIMITS.		



RESURFACING
 ADVANCE WARNING SIGNS
 FOR RURAL AND SUBURBAN
 MULTI-LANE ROADWAYS
 W/ SHOULDER SECTIONS

SIGNING FOR RESURFACING PROJECTS

LEGEND
 ┆ STATIONARY SIGN
 ← DIRECTION OF TRAFFIC FLOW



MAINLINE (-L-) SIGNING

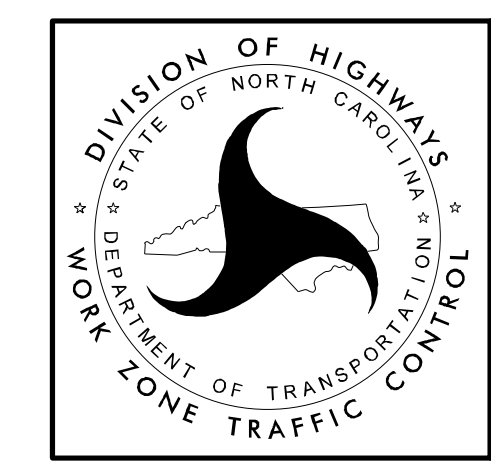
-Y- LINE SIGNING

SIGNING NOTES AND PLACEMENT PER DIRECTION	1		PLACE 1000' PRIOR TO BEGINNING OF CONSTRUCTION LIMITS. ONLY USED ON -Y- LINES IF RESURFACING LIMITS EXTEND 1000' ALONG -Y- LINE.	<p>NO REQUIRED STATIONARY SIGNING FOR THE FOLLOWING -Y- LINE CONDITIONS:</p> <ol style="list-style-type: none"> 1) LESS THAN 1000' OF RESURFACING ALONG -Y- LINE 2) SUBDIVISION ROADS 3) DEAD END ROADS <p>WHEN PAVING/CONSTRUCTION ACTIVITIES PROCEED ACROSS AN UNSIGNED -Y- LINE, PORTABLE ADVANCE WARNING SIGNS SHALL BE USED ALONG THE -Y- LINE AS SHOWN BELOW. REMOVE UPON COMPLETION OF WORK.</p> <div style="display: flex; justify-content: space-around;"> <div style="text-align: center;"> PLACED 500' IN ADVANCE OF FLAGGER. </div> <div style="text-align: center;"> PLACED 250' IN ADVANCE OF FLAGGER. </div> </div>
	2		#2 SIGN ONLY USED WHEN CONSTRUCTION LIMITS ARE 2 OR MORE MILES IN LENGTH. ROUND UP TO NEXT WHOLE NUMBER. (NO FRACTIONAL OR DECIMAL NUMBERS)	
	3		- PLACE INITIALLY AT THE CONSTRUCTION LIMITS AND SPACE 1 MILE APART THEREAFTER. - AT TEE INTERSECTIONS INSTALL INITIALLY 1/2 MILE FROM INTERSECTION AND SPACE 1 MILE APART THEREAFTER.	
	4		- THESE ARE FOR -Y- LINES THAT ARE "THROUGH" ROADWAYS. - DEAD END AND SUBDIVISION ROADS ARE NOT "THROUGH" ROADWAYS. - INSTALL 500' +/- FROM EACH -Y- LINE APPROACH AS SHOWN ABOVE. - FOR MULTIPLE -Y- LINES THAT ARE SEPARATED BY 0.25 MILES OR LESS, TREAT AS A SINGLE UNIT AND INSTALL WITHIN 500' OF EACH APPROACH. - A MAXIMUM OF 2 SIGN SETS PER MILE. DO NOT INSTALL WHEN -Y- LINES ARE WITHIN 0.5 MILES FROM "END ROAD WORK" SIGN. - FOR TEE INTERSECTIONS, INSTALL WITHIN 500' +/- OF THE INTERSECTION ALONG -L- LINE.	
	5		PLACE 500' FOLLOWING THE END OF CONSTRUCTION LIMITS OR AS SHOWN WHEN WORK ENDS AT A 3-WAY TEE INTERSECTION.	

THE ABOVE SIGNS ARE ALL THAT ARE REQUIRED FOR A CONTRACTOR TO BEGIN A RESURFACING CONTRACT. ANY ADDITIONAL SIGNS REQUESTED BY NCDOT DIVISIONS SHALL BE INSTALLED WITHIN 7 BUSINESS DAYS OF THE START OF CONTRACT WORK.

MAPS LESS THAN 2 MILES

FOR RESURFACING MAPS WITH CONSTRUCTION LIMITS LESS THAN 2 MILES IN LENGTH, NO STATIONARY SIGNS ARE REQUIRED. USE PORTABLE "ROAD UNDER CONSTRUCTION" OR "ROAD WORK AHEAD" SIGNS IN LIEU OF STATIONARY ADVANCE WARNINGS SIGNS.



ADVANCE WARNING SIGNS FOR RURAL AND SUBURBAN 2-LANE ROADWAY RESURFACING

5/15/2017 S:\TMU\WZTC\Resurfacing\2L2W & AST Resurfacing Details\Resurfacing_AdvWarn_2Ln.dgn User:kadai