

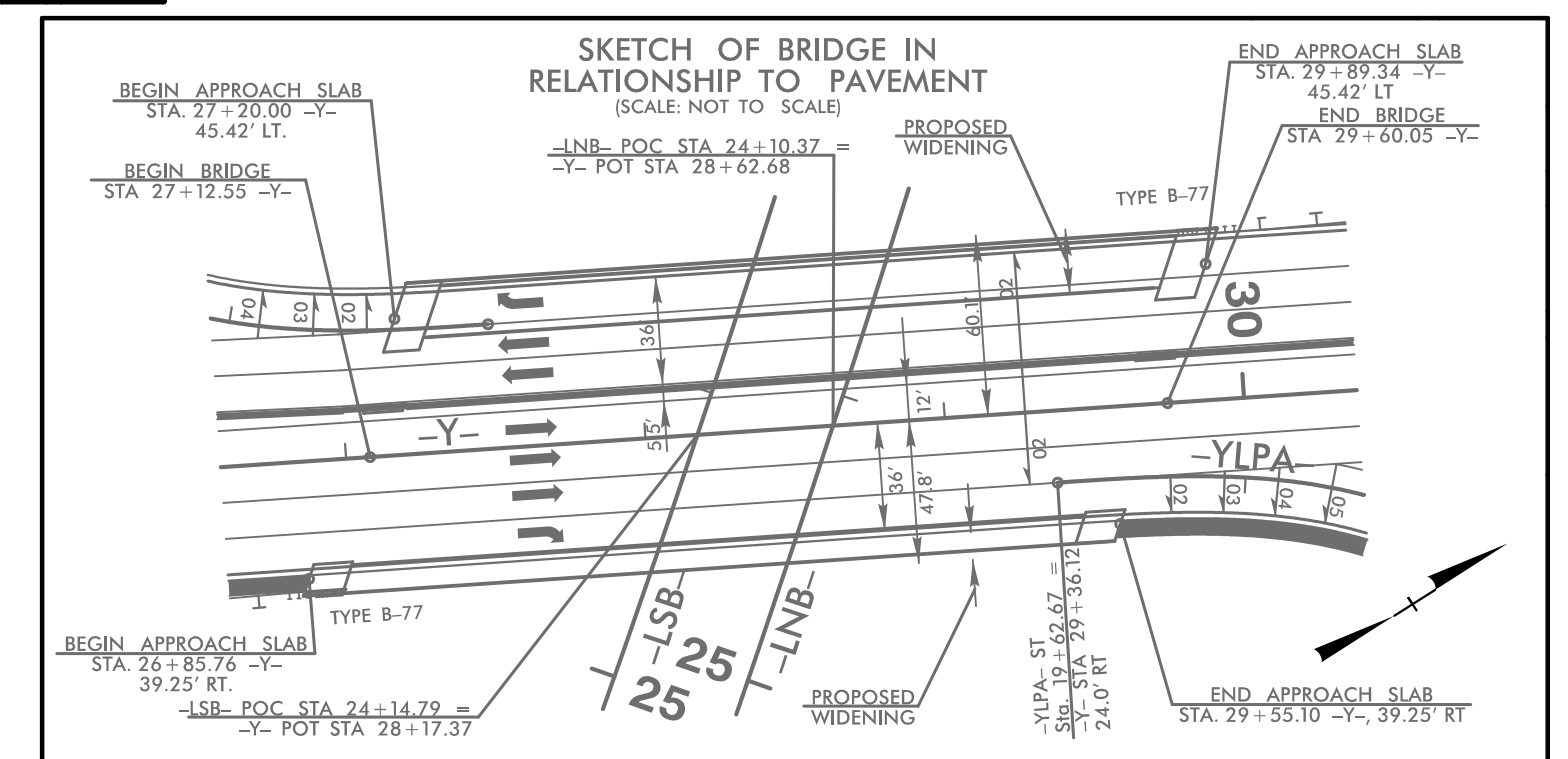
★ PROPOSED TRAFFIC SIGNAL

Place Matting for Erosion Control on Fill and Cut Slope as Work Allows.
 -YRPA- Sta. 20+00 to Sta. 28+00 RT
 -YRPD- Sta. 16+50 to Sta. 19+00 RT
 -YRPC- Sta. 19+50 to Sta. 22+00 RT
 -LSB- Sta. 23+00 to Sta. 29+50 RT
 -LNB- Sta. 18+50 to Sta. 23+00 LT
 -YLPC- Sta. 10+00 to Sta. 14+50 LT
 -YLPB- Sta. 12+50 to Sta. 13+50 RT
 -YLPA- Sta. 10+00 to Sta. 15+50 LT
 -YLPA- Sta. 12+50 to Sta. 14+00 RT

UTILIZE FABRIC INSERT INLET PROTECTION DEVICES IN LIEU OF ROCK INLET SEDIMENT TRAPS. TYPE-C AS DIRECTED TO AVOID IMPEDIMENT OF RUNOFF IN ROADWAY OPEN TO TRAFFIC.

INTERCHANGE OF I-74/US311 (-LNB-) AND NC 68 EASTCHESTER DRIVE (-Y-)

2018 ADT			
2038 ADT			
	40,856		
	47,896		
		9,852	
	7,560	13,532	
37,376			41,584
65,216	-LNB-		72,144
	5,832		7,748
	8,712		12,068
		37,024	
		45,184	

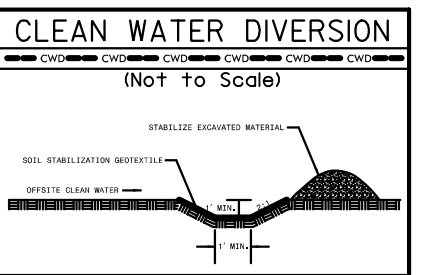
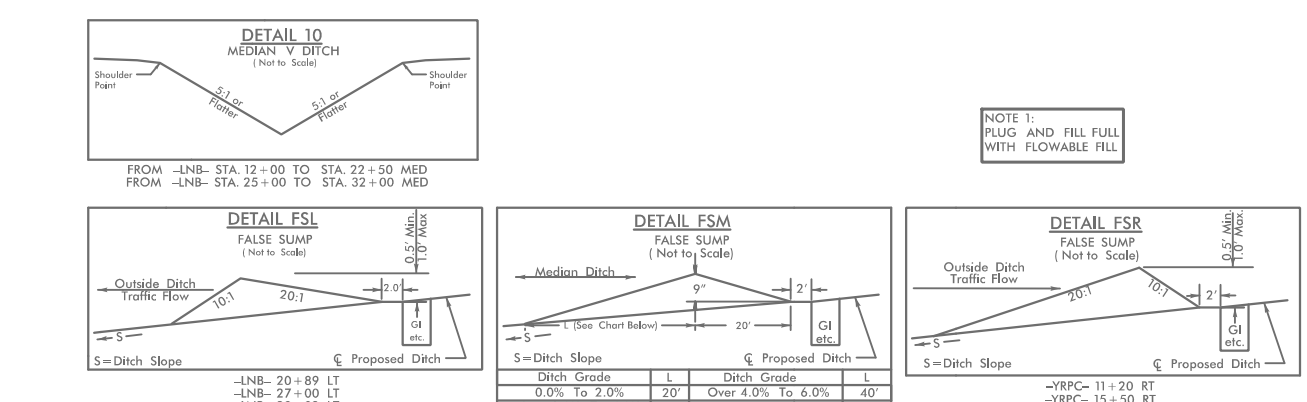
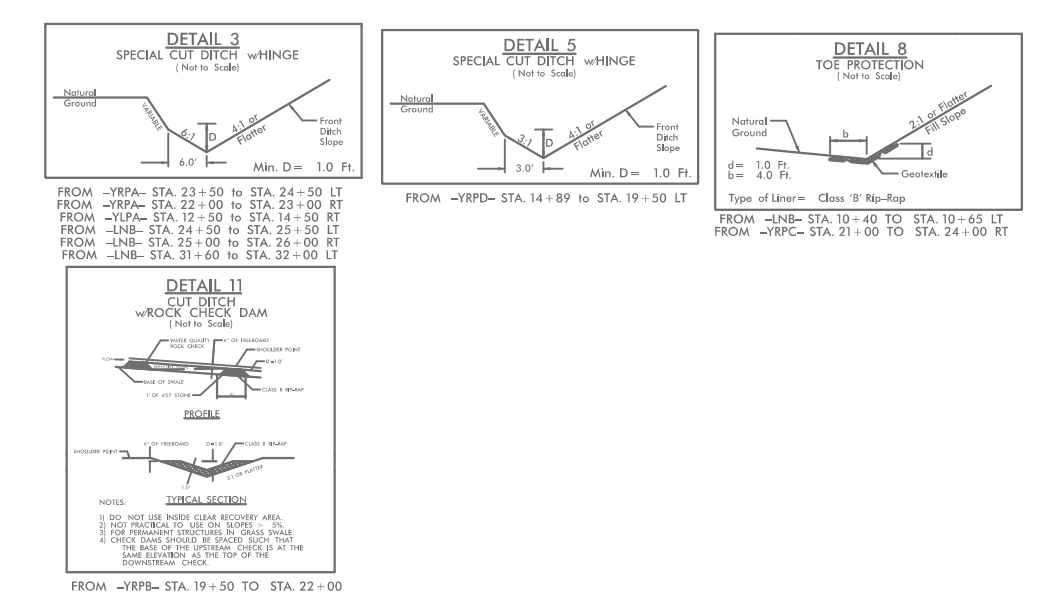
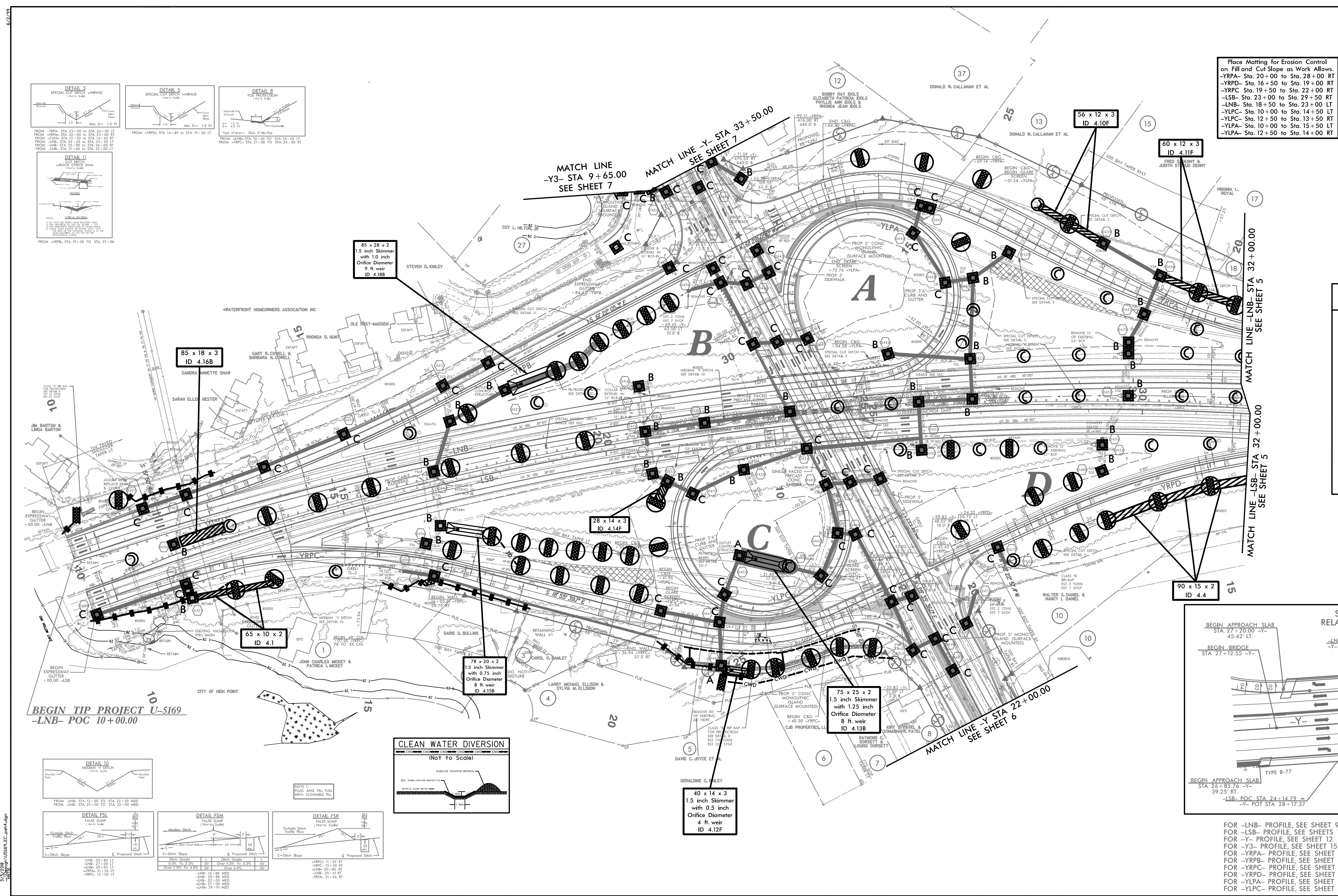
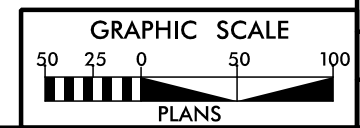


FOR -LNB- PROFILE, SEE SHEET 9
 FOR -LSB- PROFILE, SEE SHEETS 10 & 11
 FOR -Y- PROFILE, SEE SHEET 12
 FOR -Y3- PROFILE, SEE SHEET 15
 FOR -YRPA- PROFILE, SEE SHEET 16
 FOR -YRPC- PROFILE, SEE SHEET 17
 FOR -YRPB- PROFILE, SEE SHEET 18
 FOR -YRPA- PROFILE, SEE SHEET 19
 FOR -YLPA- PROFILE, SEE SHEET 17
 FOR -YLPB- PROFILE, SEE SHEET 18

LOCATION:
 I-74/US 311 AND NC 68/EAST CHESTER DRIVE
 INTERCHANGE RAMP REPLACEMENT

TP NO: U-5169 COUNTY: GUILFORD

DESIGNED BY: BRIAN BLACKWELL
 CHECKED BY: DATE:



REVISIONS
 10
 15
 20
 25
 30
 35
 40
 45
 50
 55
 60
 65
 70
 75
 80
 85
 90
 95
 100