

8.17/99
C:\PROJECTS\2018\18086\18086.DWG

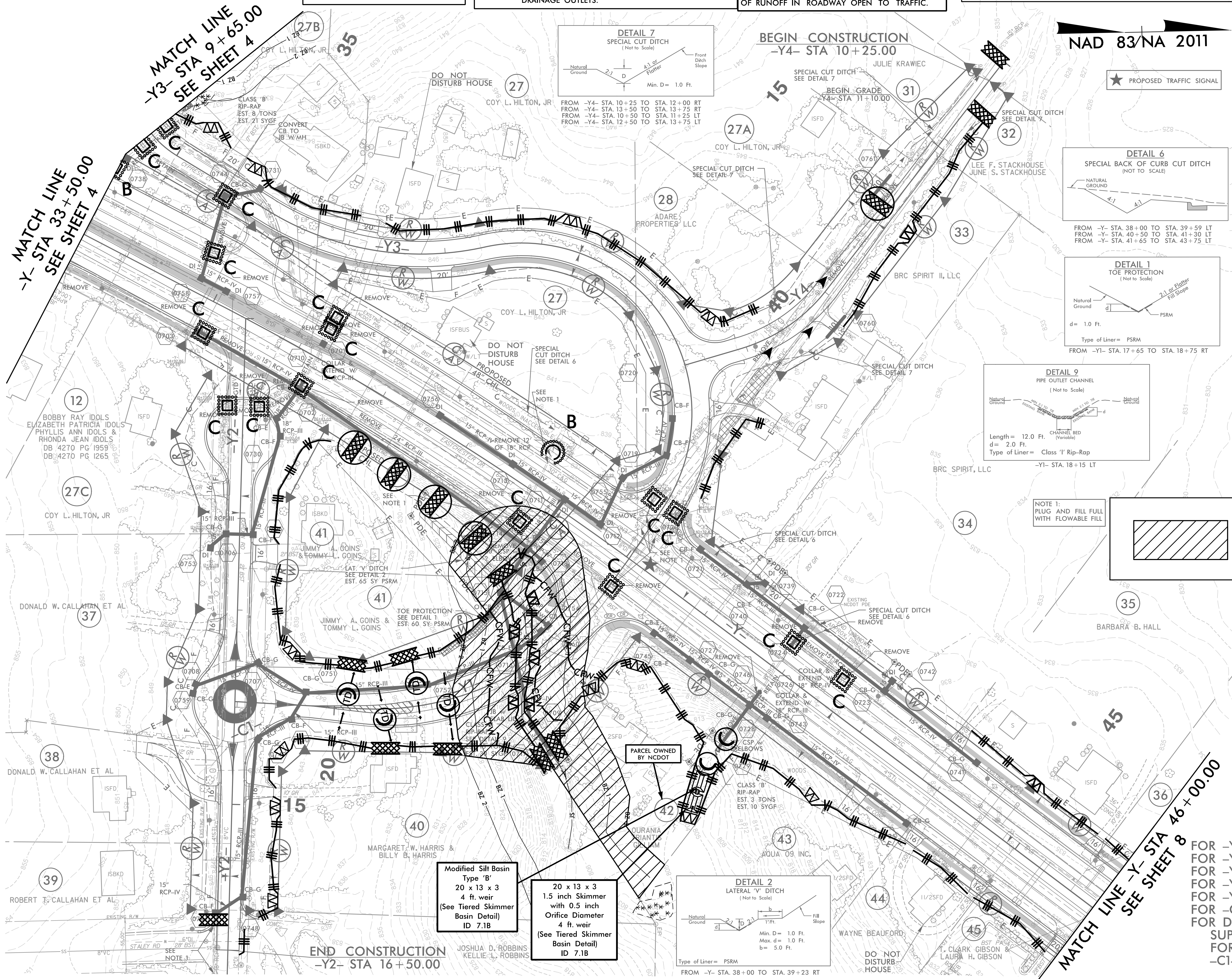
CLEARING AND GRUBBING
EROSION CONTROL FOR
CONSTRUCTION SHEET 7

NOTE:
PLACE TEMPORARY ROCK SEDIMENT DAMS TYPE - B
AND TEMPORARY ROCK SILT CHECKS TYPE - A AT
DRAINAGE OUTLETS.

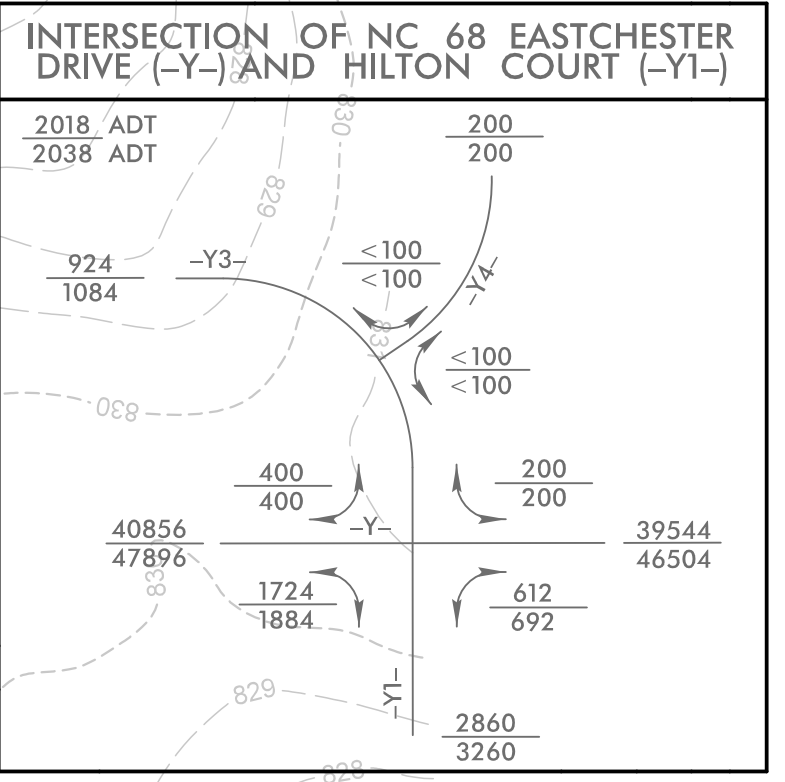
UTILIZE FABRIC INSERT INLET PROTECTION DEVICES
IN LIEU OF ROCK INLET SEDIMENT TRAPS,
TYPE-C AS DIRECTED TO AVOID IMPOUNDMENT
OF RUNOFF IN ROADWAY OPEN TO TRAFFIC.

HNTB HNTB NORTH CAROLINA, P.C.
343 E. Six Forks Road, Suite 200
Raleigh, North Carolina 27609
NC License No: C-1554

PROJECT REFERENCE NO.	SHEET NO.
U-5169	EC-7/CONST.7
RW SHEET NO.	
ROADWAY DESIGN ENGINEER	HYDRAULICS ENGINEER



NAD 83/NA 2011



NOTE 1:
PLUG AND FILL FULL
WITH FLOWABLE FILL

ENVIRONMENTALLY SENSITIVE AREA
SEE PROJECT SPECIAL PROVISIONS

Modified Silt Basin
Type 'B'
20 x 13 x 3
4 ft. weir
(See Tiered Skimmer
Basin Detail)
ID 7.1B

20 x 13 x 3
1.5 inch Skimmer
with 0.5 inch
Orifice Diameter
4 ft. weir
(See Tiered Skimmer
Basin Detail)
ID 7.1B

FOR -Y- PROFILE, SEE SHEET 12 & 13
FOR -Y1- PROFILE, SEE SHEET 14
FOR -Y2- PROFILE, SEE SHEET 14
FOR -Y3- PROFILE, SEE SHEET 15
FOR -Y4- PROFILE, SEE SHEET 15
FOR -C1- PROFILE, SEE SHEET 15
FOR DETAIL OF ALIGNMENTS,
SUPERELEVATIONS AND DIMENSIONS
FOR -Y-, -Y1-, -Y2-, -Y3-, -Y4-, AND
-C1-, SEE SHEET 2B-1