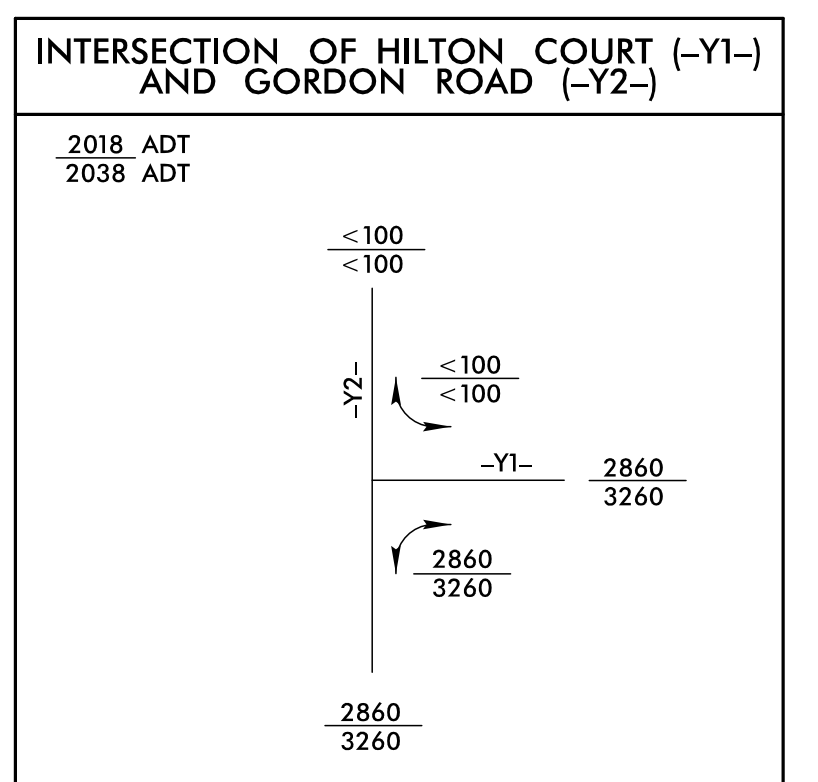
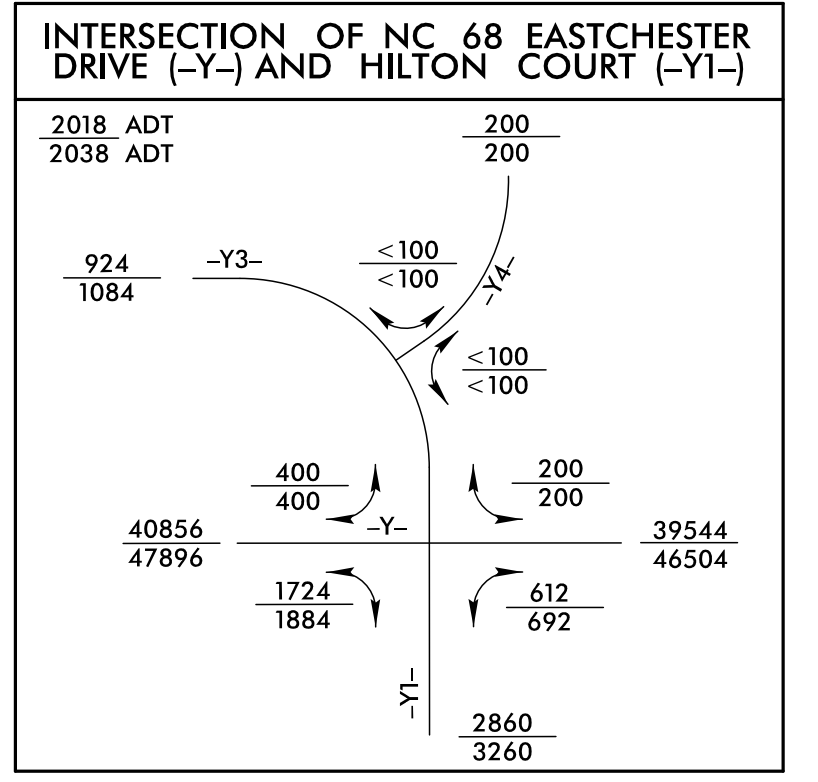
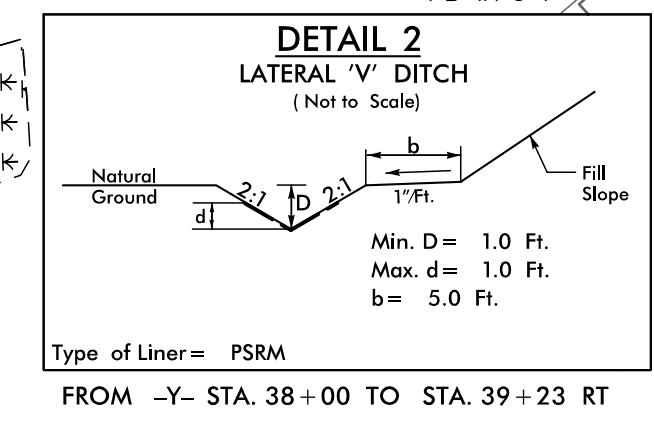
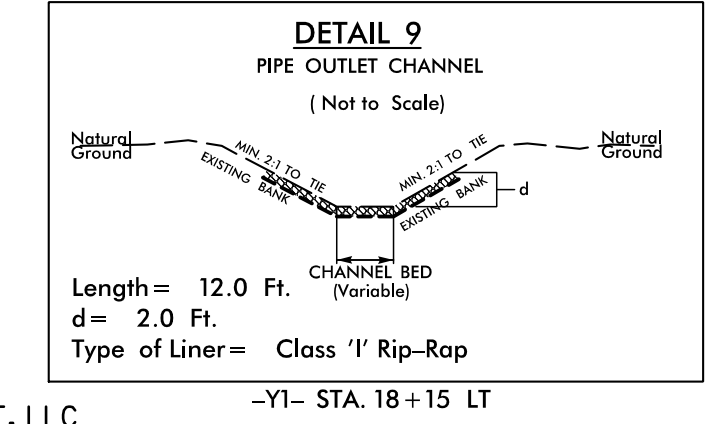
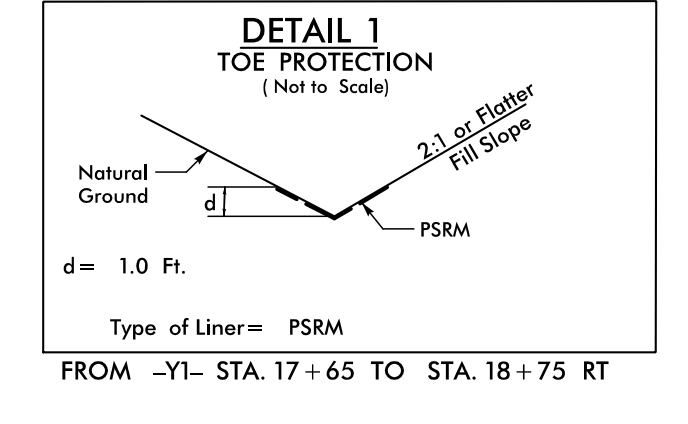
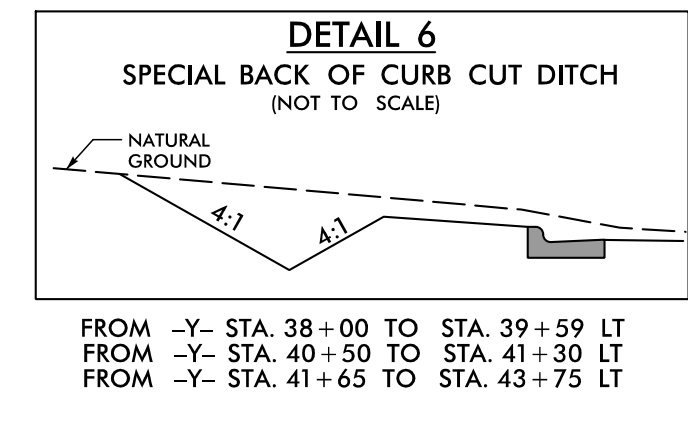
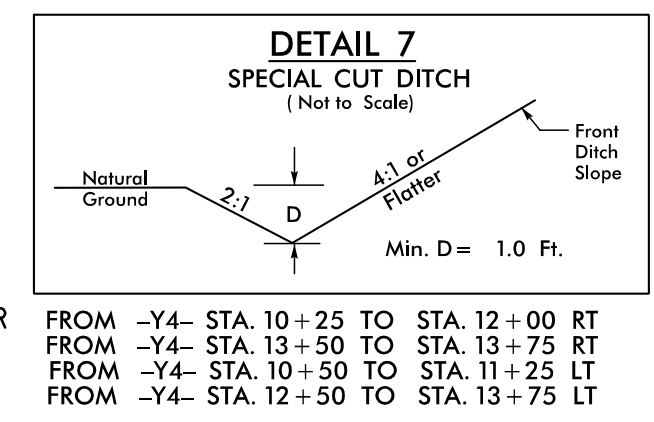
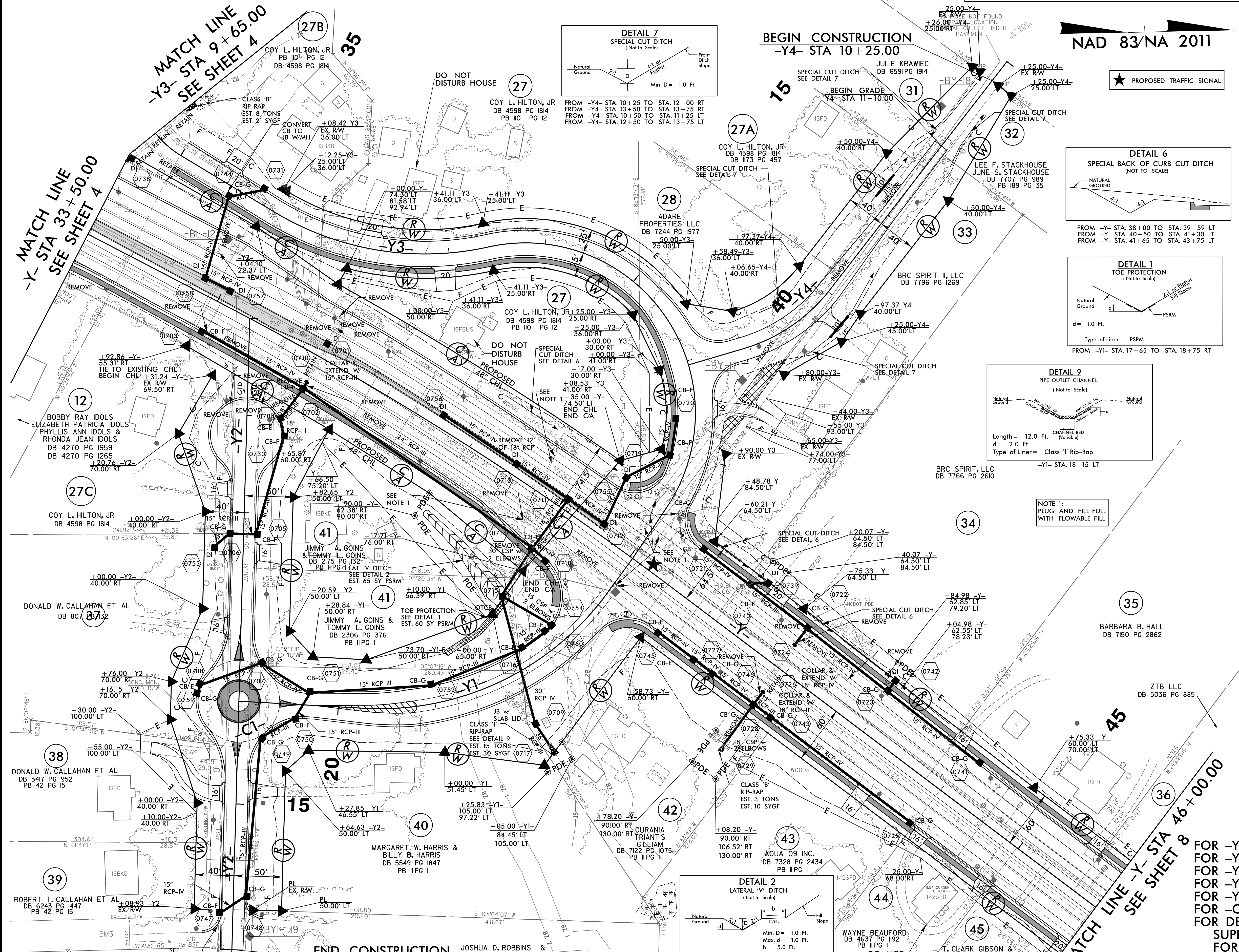


8.17/99

PROJECT REFERENCE NO. U-5169	SHEET NO. 7
ROADWAY DESIGN ENGINEER	HYDRAULICS ENGINEER
DOCUMENT NOT CONSIDERED FINAL UNLESS ALL SIGNATURES COMPLETED	

NAD 83/NA 2011



NOTE 1: PLUG AND FILL FULL WITH FLOWABLE FILL

FOR -Y- PROFILE, SEE SHEET 12 & 13
 FOR -Y1- PROFILE, SEE SHEET 14
 FOR -Y2- PROFILE, SEE SHEET 14
 FOR -Y3- PROFILE, SEE SHEET 15
 FOR -Y4- PROFILE, SEE SHEET 15
 FOR -C1- PROFILE, SEE SHEET 15
 FOR DETAIL OF ALIGNMENTS, SUPERELEVATIONS AND DIMENSIONS FOR -Y-, -Y1-, -Y2-, -Y3-, -Y4-, AND -C1-, SEE SHEET 2B-1

18-MAY-2018 11:25
Roadway (Proj) U5169_rdy_pah7.dgn