

**This electronic collection of documents is provided
for the convenience of the user
and is Not a Certified Document –**

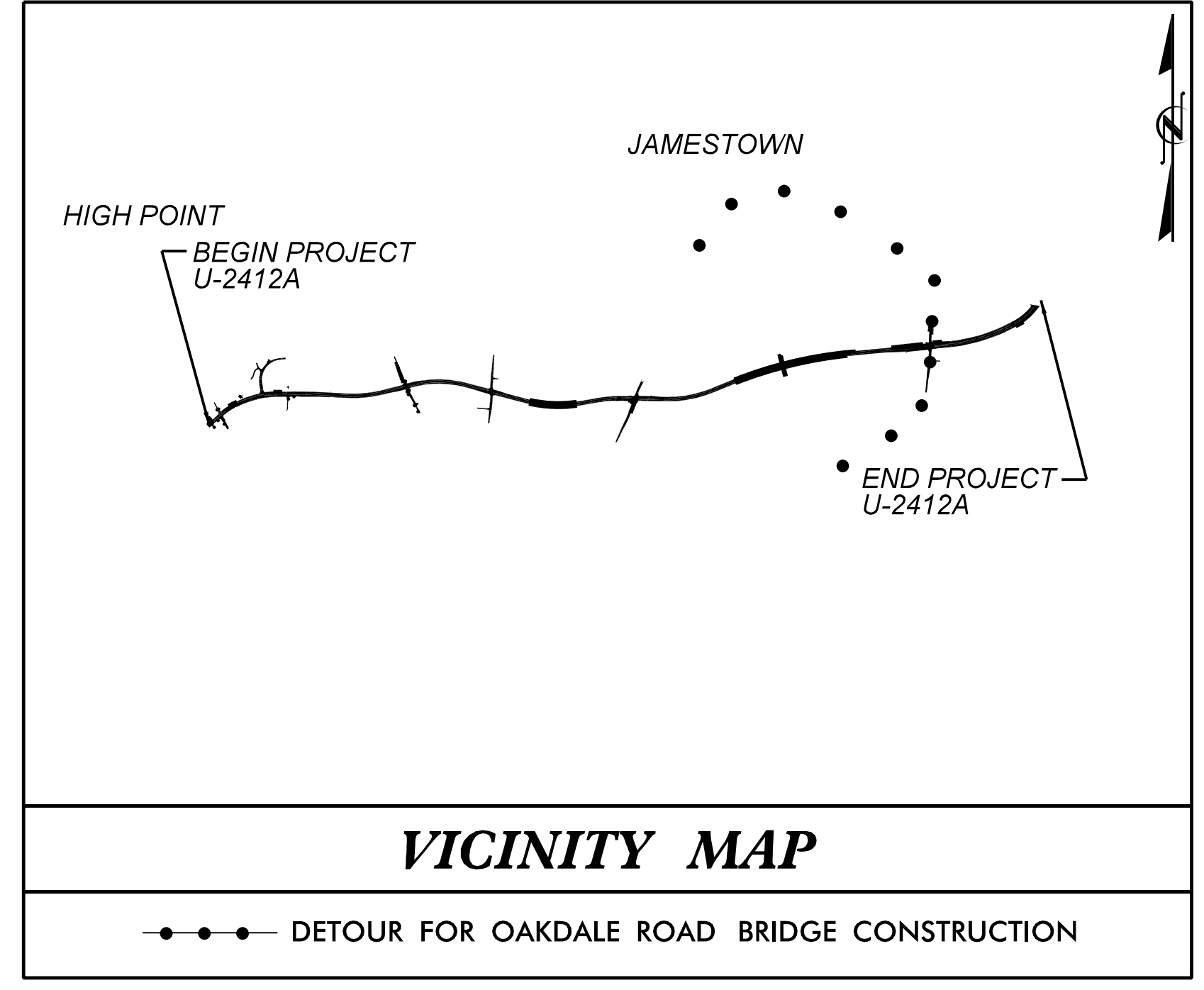
**The documents contained herein were originally issued
and sealed by the individuals whose names and license
numbers appear on each page, on the dates appearing
with their signature on that page.**

**This file or an individual page
shall not be considered a certified document.**

09/08/95

TIP PROJECT: U-2412A

SEE SHEET 1A FOR INDEX OF SHEETS
SEE SHEET 1B FOR CONVENTIONAL SYMBOLS



STATE OF NORTH CAROLINA DIVISION OF HIGHWAYS

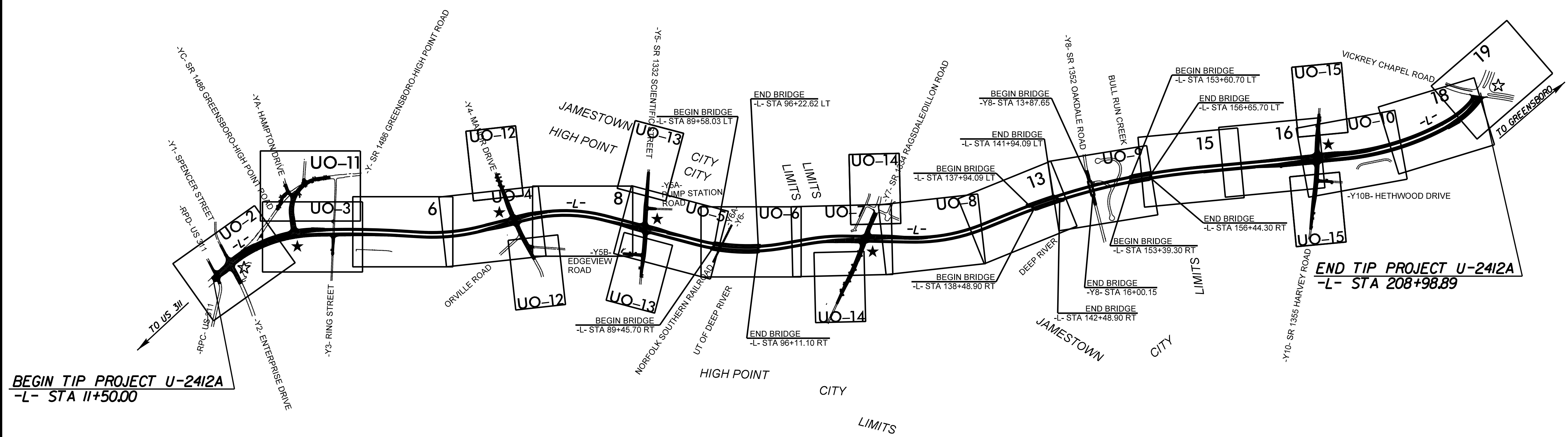
UTILITIES BY OTHERS PLANS GUILFORD COUNTY

LOCATION: SR-1486 / SR-4121 (GREENSBORO/HIGH POINT ROAD) FROM PROPOSED
US 311 BYPASS TO WEST OF SR 1480 (VICKREY CHAPEL ROAD)

TYPE OF WORK: POWER TRANSMISSION, POWER DISTRIBUTION,
GAS DISTRIBUTION AND COMMUNICATIONS

T.I.P. NO.	SHEET NO.
U-2412A	UO-1

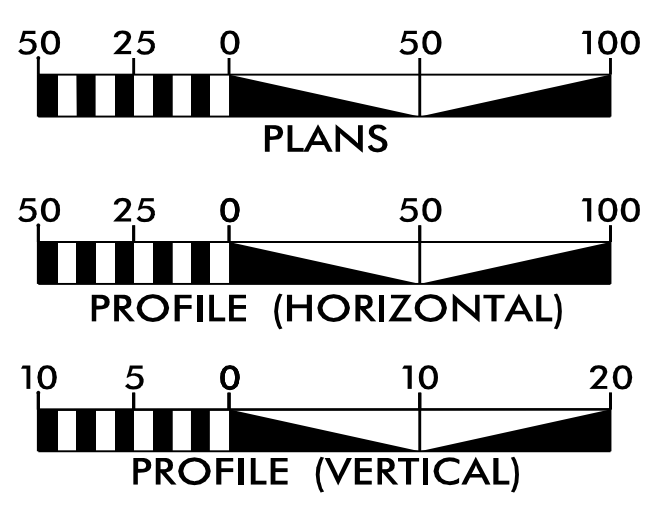
NOTE:
ALL UTILITY WORK SHOWN ON THIS SHEET WILL BE DONE BY OTHERS. NO PAYMENT WILL BE MADE TO THE CONTRACTOR FOR UTILITY WORK SHOWN ON THIS SHEET.



NAD 83/95

PRELIMINARY PLANS
DO NOT USE FOR CONSTRUCTION

GRAPHIC SCALES



INDEX OF SHEETS

SHEET NO.:	DESCRIPTION:
UO-1	TITLE SHEET
UO-2 THRU UO-15	UBO PLAN SHEETS

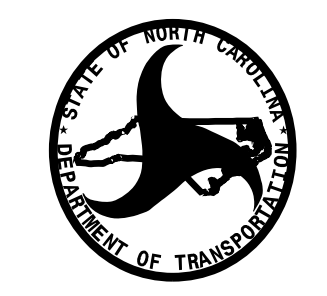
UTILITY OWNERS WITH CONFLICTS

- (A) POWER (TRANSMISSION) - DUKE ENERGY
- (B) POWER (DISTRIBUTION) - DUKE ENERGY
- (C) POWER (DISTRIBUTION) - CITY OF HIGH POINT
- (D) GAS (DISTRIBUTION) - PIEDMONT NATURAL GAS
- (E) COMMUNICATIONS - NORTH STATE
- (F) COMMUNICATIONS - SPECTRUM

PREPARED IN THE OFFICE OF:



SO-DEEP | SAM NC, Inc.
A SAM COMPANY
2800-154 Summer Boulevard, Raleigh, NC 27616 Tel 919-878-7466



**DIVISION OF HIGHWAYS
UTILITIES UNIT**
1555 MAIL SERVICES CENTER
RALEIGH, NC 27699-1555
PHONE (919) 707-6690
FAX (919) 250-4151

KEITH GARRY UTILITY PROJECT MANAGER
FREDDIE BUNN PROJECT UTILITY COORDINATOR

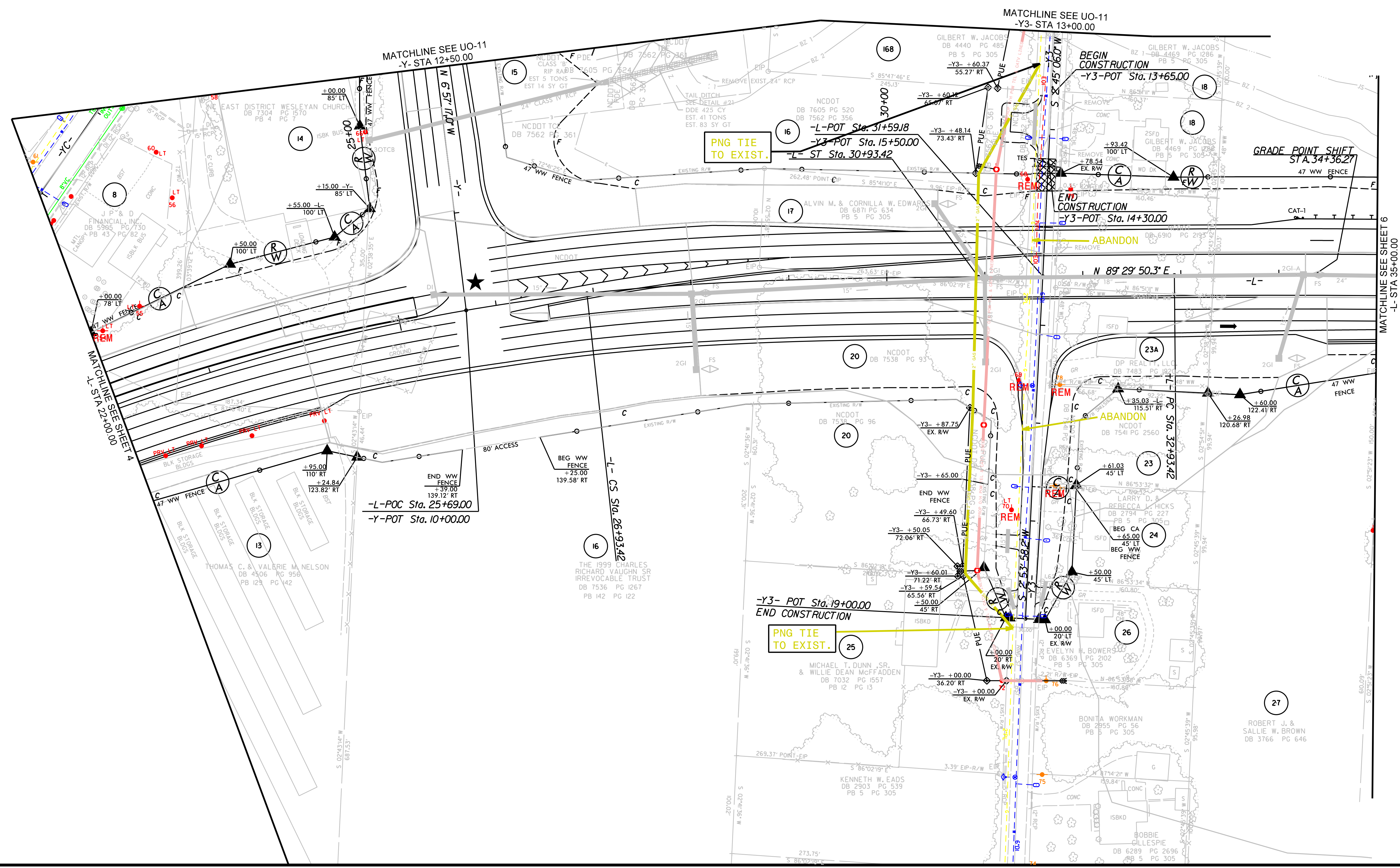
XXXX UTILITIES REGIONAL ENGINEER
ALI KOUCHEKI UTILITIES ENGINEER
KYLE PLEASANT UTILITIES AREA COORDINATOR
KYLE PLEASANT UTILITIES COORDINATOR

\$\$\$\$\$ SYSTEM \$\$\$\$\$\$
\$\$\$\$\$ DOWN \$\$\$\$\$\$
\$\$\$\$\$ USERNAME \$\$\$\$\$\$

UTILITIES BY OTHERS

NOTE:
 ALL UTILITY WORK SHOWN ON THIS SHEET WILL BE DONE BY OTHERS.
 NO PAYMENT WILL BE MADE TO THE CONTRACTOR FOR UTILITY WORK SHOWN ON THIS SHEET.

8/17/99



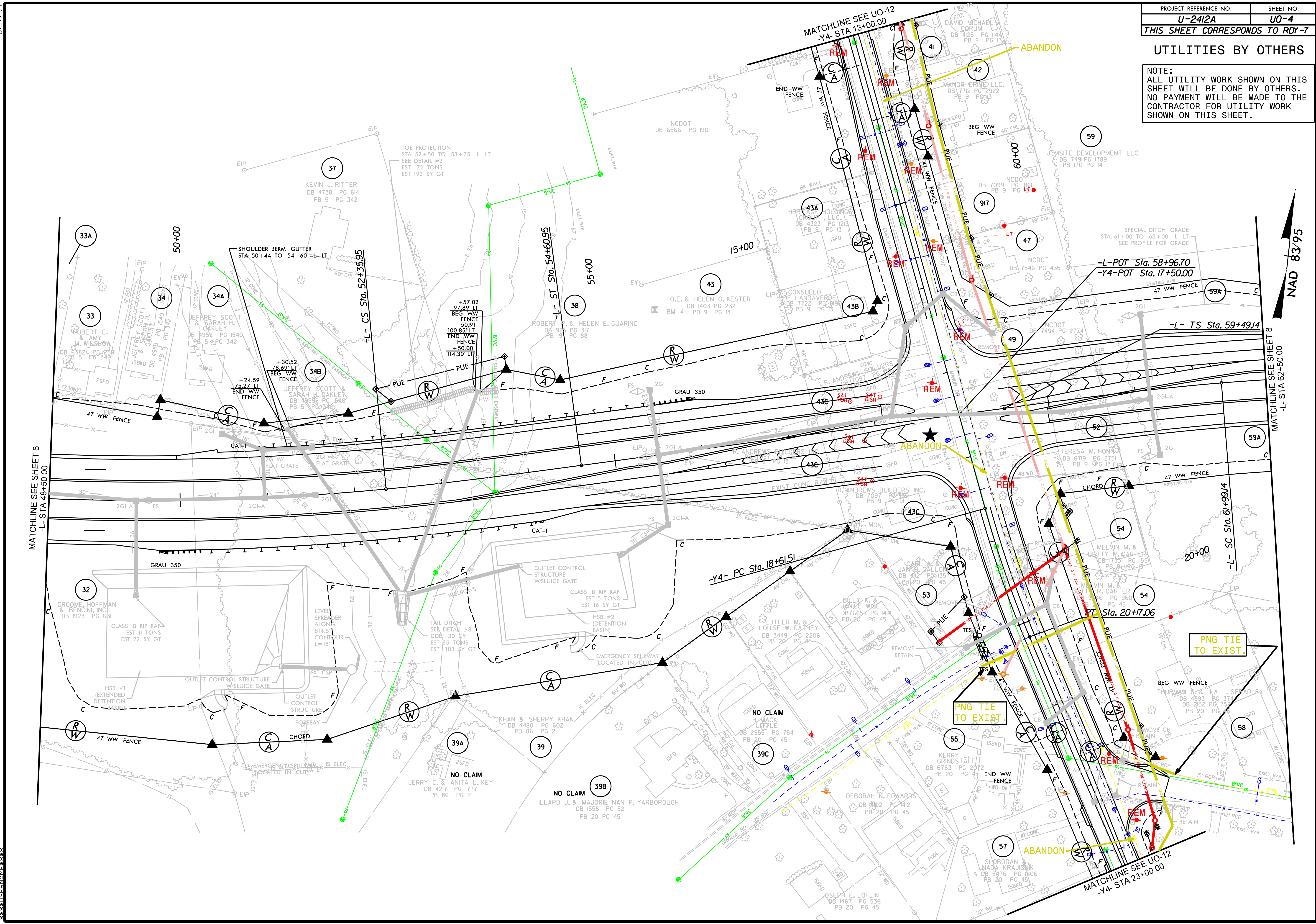
NAD 83/95

8.17/99

PROJECT REFERENCE NO.	SHEET NO.
U-2412A	U0-4
THIS SHEET CORRESPONDS TO RDY-7	

UTILITIES BY OTHERS

NOTE:
 ALL UTILITY WORK SHOWN ON THIS SHEET WILL BE DONE BY OTHERS.
 NO PAYMENT WILL BE MADE TO THE CONTRACTOR FOR UTILITY WORK SHOWN ON THIS SHEET.



MATCHLINE SEE SHEET 6
-L- STA 48+50.00

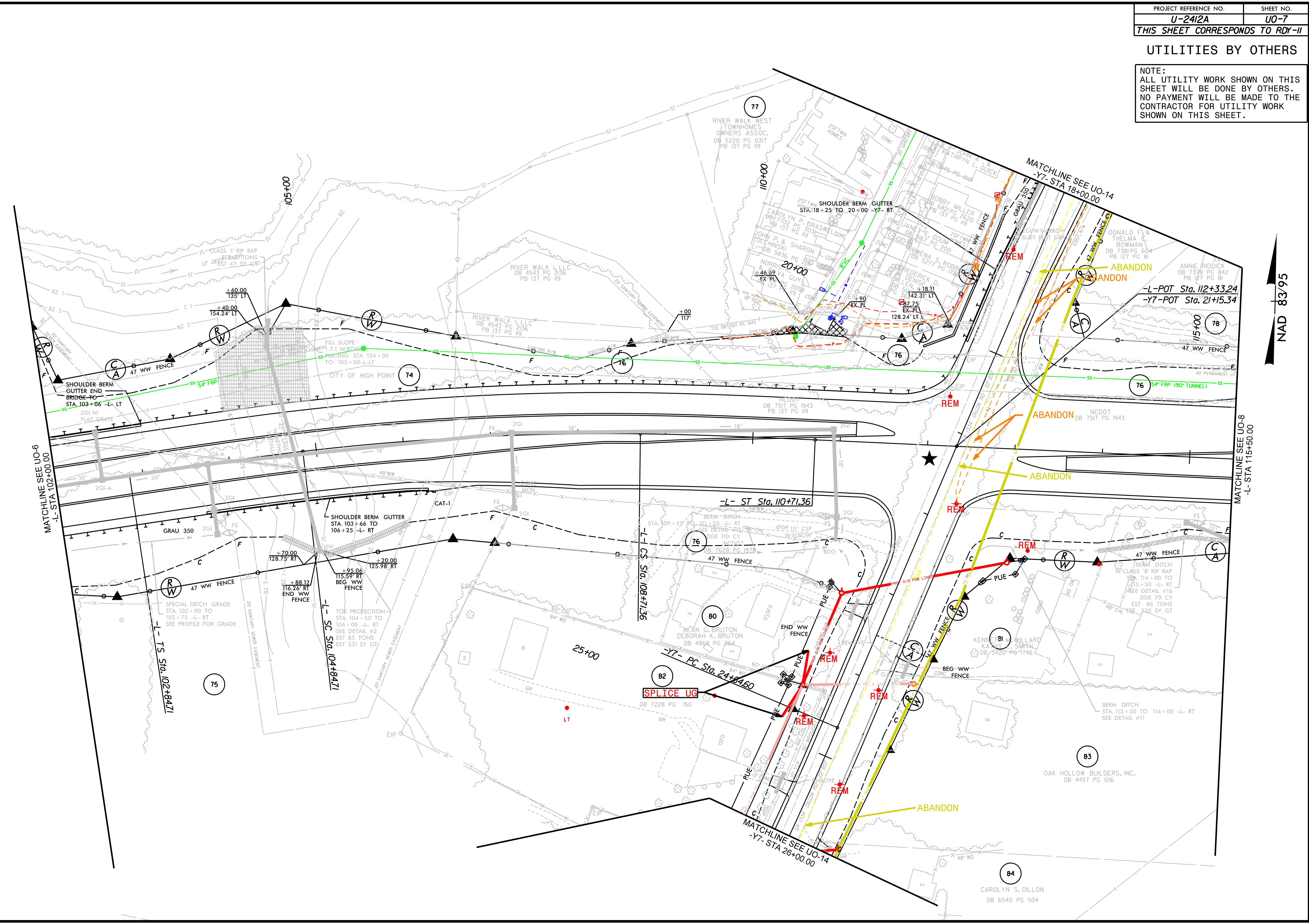
MATCHLINE SEE SHEET 8
-L- STA 62+50.00

11
 12
 13
 14
 15
 16
 17
 18
 19
 20
 21
 22
 23
 24
 25
 26
 27
 28
 29
 30
 31
 32
 33
 34
 35
 36
 37
 38
 39
 40
 41
 42
 43
 44
 45
 46
 47
 48
 49
 50
 51
 52
 53
 54
 55
 56
 57
 58
 59
 60
 61
 62
 63
 64
 65
 66
 67
 68
 69
 70
 71
 72
 73
 74
 75
 76
 77
 78
 79
 80
 81
 82
 83
 84
 85
 86
 87
 88
 89
 90
 91
 92
 93
 94
 95
 96
 97
 98
 99
 100

UTILITIES BY OTHERS

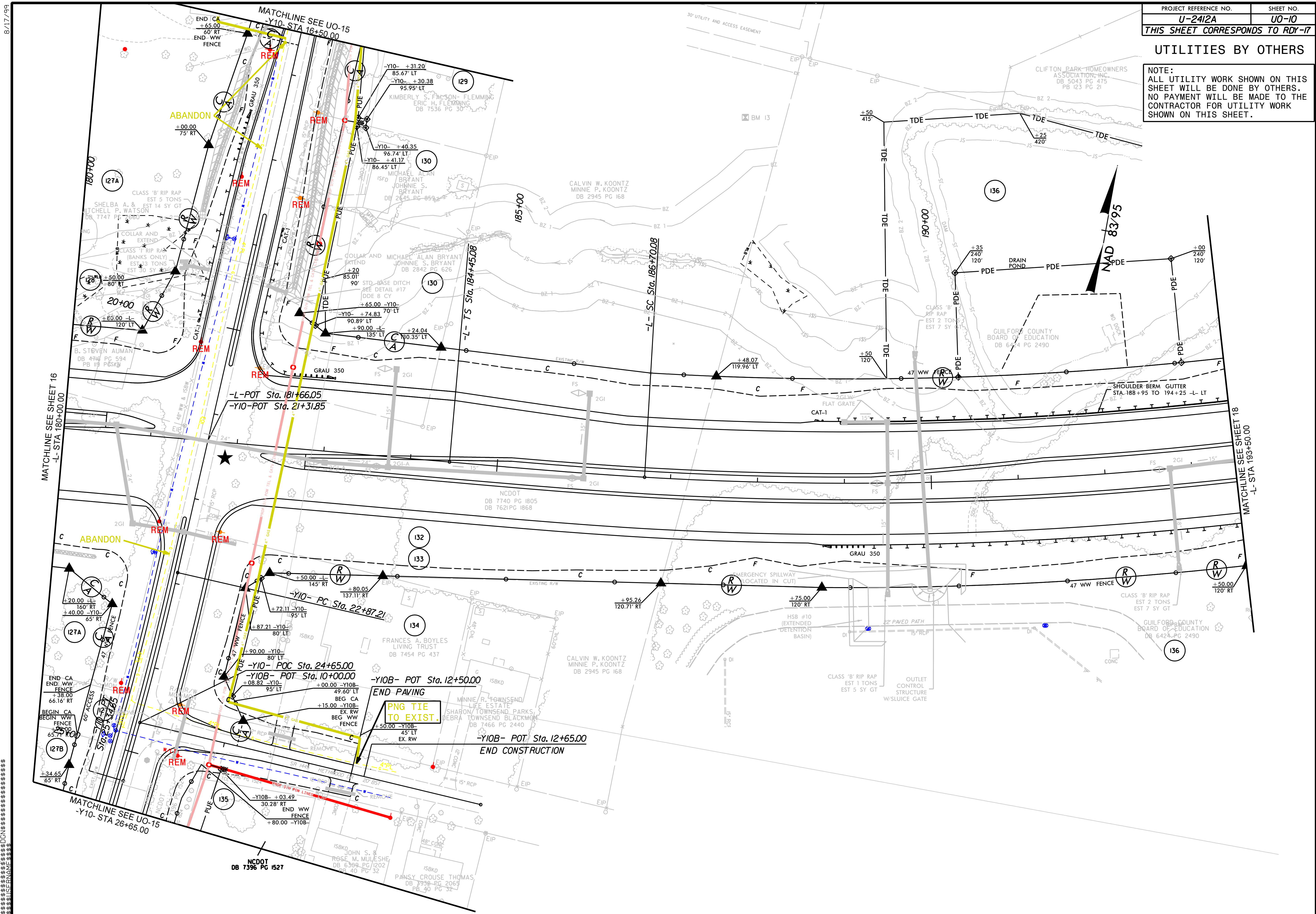
NOTE:
ALL UTILITY WORK SHOWN ON THIS SHEET WILL BE DONE BY OTHERS. NO PAYMENT WILL BE MADE TO THE CONTRACTOR FOR UTILITY WORK SHOWN ON THIS SHEET.

8/17/99
C:\PROJECTS\2412A\DWG\U0-7.DWG
PLT:R14
PLOT DATE: 11/14/00
PLOT TIME: 10:58:00
PLOT BY: JLM



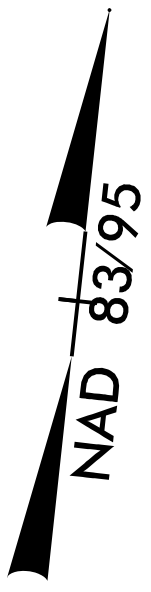
UTILITIES BY OTHERS

NOTE:
 ALL UTILITY WORK SHOWN ON THIS SHEET WILL BE DONE BY OTHERS. NO PAYMENT WILL BE MADE TO THE CONTRACTOR FOR UTILITY WORK SHOWN ON THIS SHEET.



8.17.99
 MATCHLINE SEE SHEET 16
 -L- STA 180+00.00
 MATCHLINE SEE SHEET 18
 -L- STA 193+50.00
 MATCHLINE SEE UO-15
 -Y10- STA 26+65.00
 MATCHLINE SEE UO-15
 -Y10- STA 16+50.00
 MATCHLINE SEE UO-15
 -Y10- STA 24+65.00
 NCDOT
 DB 7396 PG 1527

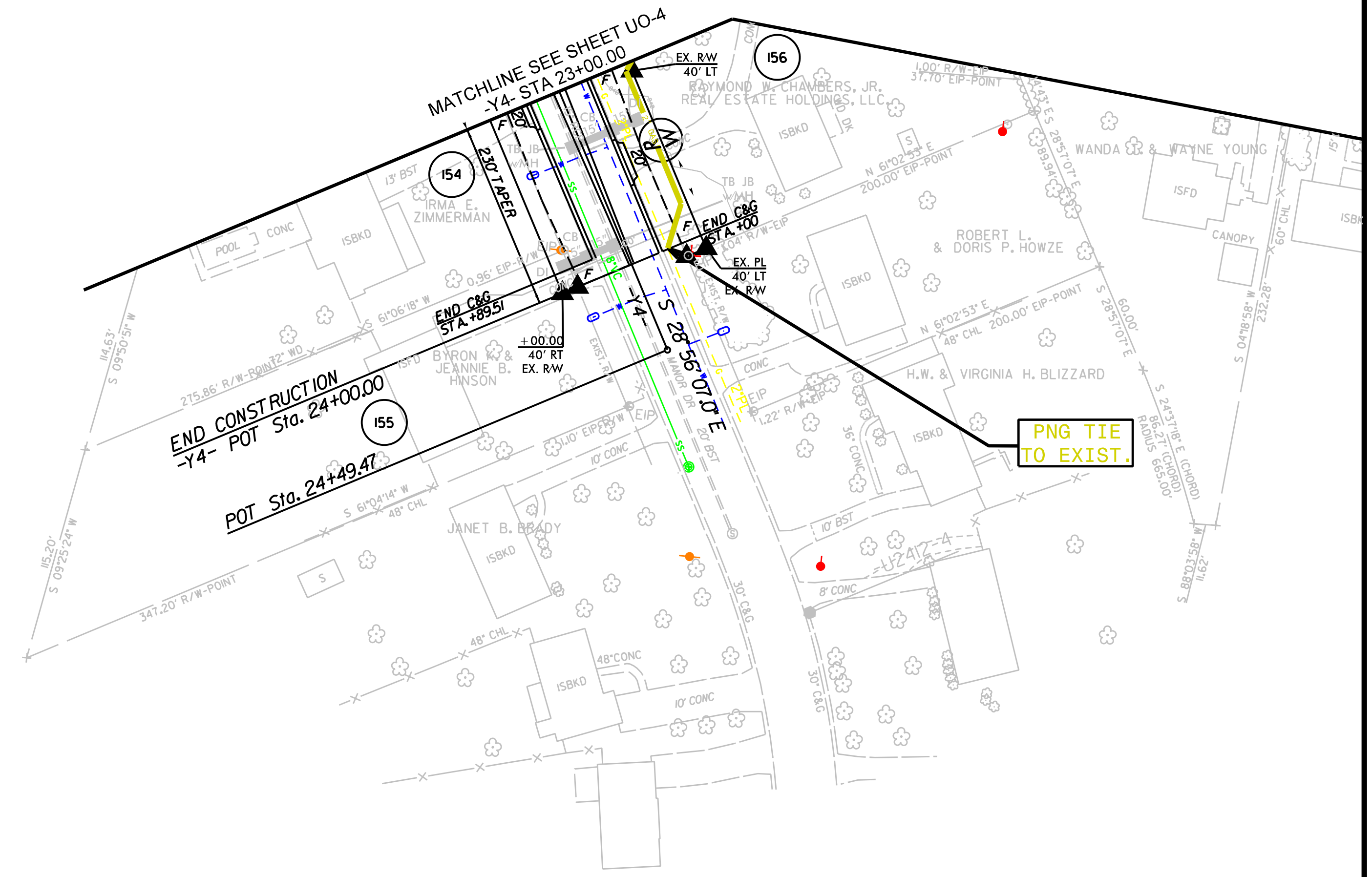
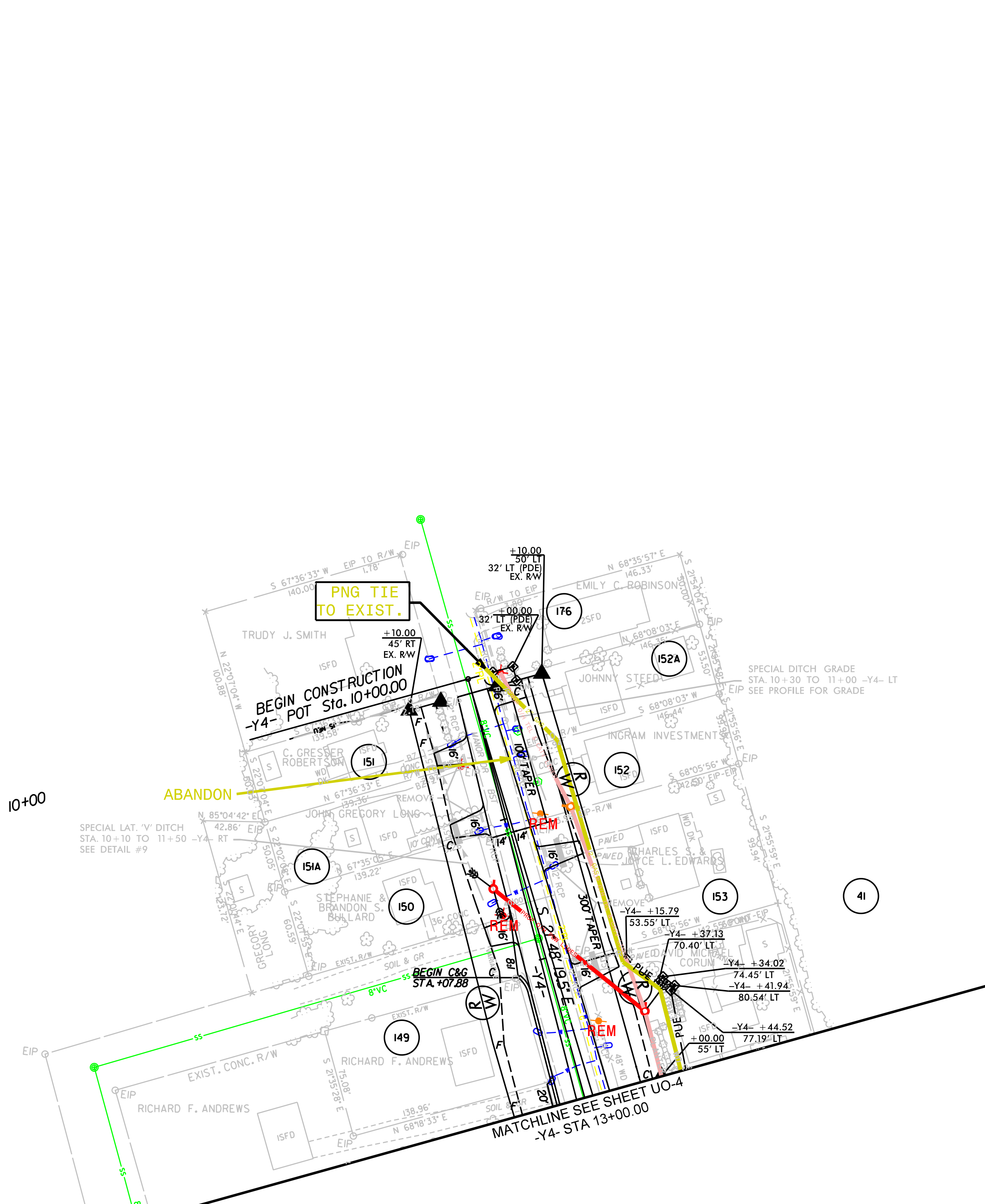
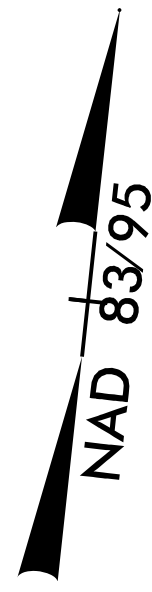
8/17/99



PROJECT REFERENCE NO.	SHEET NO.
U-2412A	UO-12
THIS SHEET CORRESPONDS TO R0Y-21	

UTILITIES BY OTHERS

NOTE:
 ALL UTILITY WORK SHOWN ON THIS SHEET WILL BE DONE BY OTHERS.
 NO PAYMENT WILL BE MADE TO THE CONTRACTOR FOR UTILITY WORK SHOWN ON THIS SHEET.



SYTIME DGN

