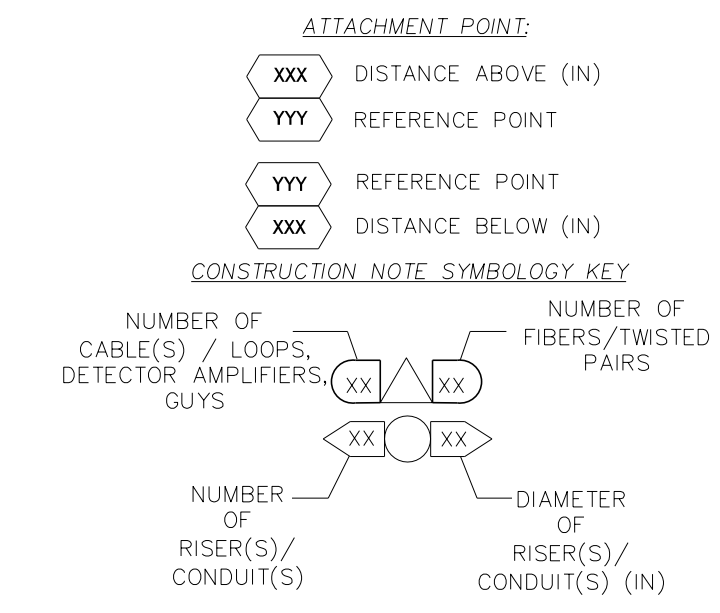


- | | | | | |
|--|--|--|---|--|
| 1 INSTALL COMPOSITE CCTV CABLE | 15 DIRECTIONAL DRILL CONDUIT | 29 INSTALL UNDERGROUND SPLICE ENCLOSURE | 43 REMOVE EXISTING WOOD POLE | 57 MODIFY EXISTING ELECTRICAL SERVICE FOR CCTV |
| 2 INSTALL LOW VOLTAGE POWER CABLE (24VAC) | 16 BORE AND JACK CONDUIT | 30 INSTALL AERIAL SPLICE ENCLOSURE | 44 INSTALL AERIAL GUY ASSEMBLY | 58 INSTALL NEW ELECTRICAL SERVICE FOR CCTV |
| 3 INSTALL COMPOSITE POWER/ETHERNET CABLE | 17 INSTALL CABLE(S) IN EXISTING CONDUIT | 31 INSTALL SPLICE CABINET | 45 INSTALL STANDARD GUY ASSEMBLY | 59 INSTALL NEW POLE MOUNTED CCTV CABINET (336) |
| 4 INSTALL SMFO CABLE | 18 INSTALL CABLE(S) IN NEW CONDUIT | 32 MODIFY EXISTING SPLICE ENCLOSURE OR INTERCONNECT CENTER | 46 INSTALL SIDEWALK GUY ASSEMBLY | 60 INSTALL NEW BUILDING MOUNTED CCTV CABINET (336) |
| 5 NOT USED | 19 INSTALL CABLE(S) IN EXISTING RISER(S) | 33 REMOVE EXISTING SPLICE / HUB / CCTV CABINET | 47 INSTALL MESSENGER CABLE | 61 REMOVE EXISTING CCTV CAMERA ASSEMBLY |
| 6 INSTALL FIBER-OPTIC DROP CABLE | 20 INSTALL CABLE(S) IN NEW RISER(S) | 34 INSTALL CABINET FOUNDATION | 48 REMOVE EXISTING COMMUNICATIONS CABLE AND MESSENGER CABLE | 62 NEW CABINET ENTRANCE INTO NEW FOUNDATION |
| 7 INSTALL TRACER WIRE | 21 INSTALL NEW CONDUIT INTO CABINET ENTRANCE | 35 REMOVE EXISTING CABINET FOUNDATION | 49 REMOVE EXISTING COMMUNICATIONS CABLE | 63 DRILL / CORE DRILL EXISTING FOUNDATION |
| 8 INSTALL CONDUIT UNDERGROUND | 22 INSTALL NEW CONDUIT INTO CABINET BASE (USE EX CABINET ENTRANCE WHEN AVAILABLE) | 36 INSTALL CCTV CAMERA ASSEMBLY | 50 INSTALL WIRELESS DSL | 64 INTERCEPT AND REROUTE EXISTING CONDUITS |
| 9 INSTALL PVC CONDUIT | 23 INSTALL NEW RISER INTO CABINET BASE (USE EX CABINET ENTRANCE WHEN AVAILABLE) | 37 INSTALL CCTV WOOD POLE | 51 INSTALL CABLE STORAGE GUIDE(S) [SNOW SHOE(S)] AND STORE 100 FEET OF EACH CABLE | 65 BOND MESSENGER TO POLE GROUND |
| 10 INSTALL RIGID, GALVANIZED STEEL CONDUIT | 24 INSTALL NEW CONDUIT INTO POLE MOUNTED CABINET | 38 INSTALL STANDARD SIZE JUNCTION BOX | 52 INSTALL DELINEATOR MARKER | 66 BOND RISER TO POLE GROUND |
| 11 INSTALL RIGID, GALVANIZED STEEL RISER WITH WEATHERHEAD | 25 INSTALL NEW RISER INTO POLE MOUNTED CABINET | 39 INSTALL SPECIAL-SIZED JUNCTION BOX | 53 STORE 50 FEET OF COMMUNICATIONS CABLE (EACH CABLE) | 67 BOND TRACER WIRE TO EQUIPMENT GROUND BUS |
| 12 INSTALL RIGID, GALVANIZED STEEL RISER WITH HEAT SHRINK TUBING | 26 INSTALL DIGITAL VIDEO ENCODER | 40 INSTALL OVER-SIZED JUNCTION BOX | 54 LASH CABLE(S) TO EXISTING SIGNAL/COMMUNICATIONS CABLE | 68 INSTALL NEW COVER ON OVER-SIZED JUNCTION BOX |
| 13 INSTALL HEAT SHRINK TUBING RETROFIT KIT | 27 INSTALL NEW ETHERNET EDGE SWITCH IN CABINET | 41 REMOVE EXISTING JUNCTION BOX | 55 LASH CABLE(S) TO EXISTING MESSENGER CABLE | 69 INSTALL NEW BASE MOUNTED CCTV CABINET (336-A) |
| 14 INSTALL HIGH DENSITY POLYETHYLENE CONDUIT | 28 INSTALL INTERCONNECT CENTER, PATCH PANEL, JUMPERS, AND FUSION SPLICE CABLE IN CABINET | 42 INSTALL WOOD POLE | 56 LASH CABLE(S) TO NEW MESSENGER CABLE | 70 INSTALL NEW POLE MOUNTED CCTV CABINET (NEMA TYPE 4) |
| | | | | 71 HANDLASH AND INSTALL AERIAL CABLE PROTECTOR |



M M
MOTT MACDONALD
 PO Box 700
 Fuquay-Varina, NC 27526
 www.m-m.com
 License No. F-0669

Prepared for the Offices of:

 59 N. Greenfield Pkwy., Garner, NC 27529

High Point Signal System Cable Routing Plans

Division 7 Guilford County High Point

PLAN DATE: February 2018 REVIEWED BY: R. THOMPSON

PREPARED BY: B. LEHAN REVIEWED BY:

REVISIONS	INIT.	DATE

DOCUMENT NOT CONSIDERED FINAL UNLESS ALL SIGNATURES COMPLETED

SEAL
 NORTH CAROLINA PROFESSIONAL ENGINEER
 BRENDAN A. LEHAN
 045256
 3/20/2018

DocuSign
 Signature: Brendan Lehan
 Date: 3/20/2018
 SEAL INVENTORY NO. _____