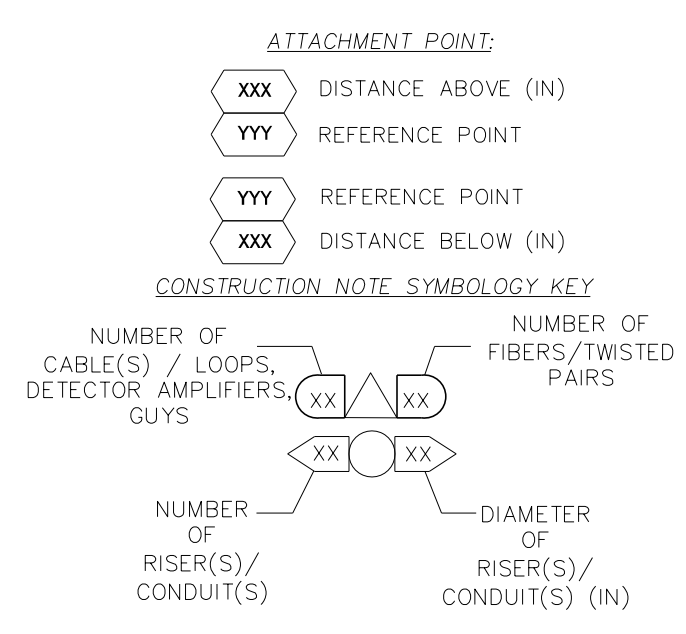


1	INSTALL COMPOSITE CCTV CABLE	15	DIRECTIONAL DRILL CONDUIT	29	INSTALL UNDERGROUND SPLICE ENCLOSURE	43	REMOVE EXISTING WOOD POLE	57	MODIFY EXISTING ELECTRICAL SERVICE FOR CCTV
2	INSTALL LOW VOLTAGE POWER CABLE (24VAC)	16	BORE AND JACK CONDUIT	30	INSTALL AERIAL SPLICE ENCLOSURE	44	INSTALL AERIAL GUY ASSEMBLY	58	INSTALL NEW ELECTRICAL SERVICE FOR CCTV
3	INSTALL COMPOSITE POWER/ETHERNET CABLE	17	INSTALL CABLE(S) IN EXISTING CONDUIT	31	INSTALL SPLICE CABINET	45	INSTALL STANDARD GUY ASSEMBLY	59	INSTALL NEW POLE MOUNTED CCTV CABINET (336)
4	INSTALL SMFO CABLE	18	INSTALL CABLE(S) IN NEW CONDUIT	32	MODIFY EXISTING SPLICE ENCLOSURE OR INTERCONNECT CENTER	46	INSTALL SIDEWALK GUY ASSEMBLY	60	INSTALL NEW BUILDING MOUNTED CCTV CABINET (336)
5	NOT USED	19	INSTALL CABLE(S) IN EXISTING RISER(S)	33	REMOVE EXISTING SPLICE / HUB / CCTV CABINET	47	INSTALL MESSENGER CABLE	61	REMOVE EXISTING CCTV CAMERA ASSEMBLY
6	INSTALL FIBER-OPTIC DROP CABLE	20	INSTALL CABLE(S) IN NEW RISER(S)	34	INSTALL CABINET FOUNDATION	48	REMOVE EXISTING COMMUNICATIONS CABLE AND MESSENGER CABLE	62	NEW CABINET ENTRANCE INTO NEW FOUNDATION
7	INSTALL TRACER WIRE	21	INSTALL NEW CONDUIT INTO CABINET BASE (USE EX CABINET ENTRANCE WHEN AVAILABLE)	35	REMOVE EXISTING CABINET FOUNDATION	49	REMOVE EXISTING COMMUNICATIONS CABLE	63	DRILL / CORE DRILL EXISTING FOUNDATION
8	INSTALL CONDUIT UNDERGROUND	22	INSTALL NEW RISER INTO CABINET BASE (USE EX CABINET ENTRANCE WHEN AVAILABLE)	36	INSTALL CCTV CAMERA ASSEMBLY	50	INSTALL WIRELESS DSL	64	INTERCEPT AND REROUTE EXISTING CONDUITS
9	INSTALL PVC CONDUIT	23	INSTALL NEW CONDUIT INTO POLE MOUNTED CABINET	37	INSTALL CCTV WOOD POLE	51	INSTALL CABLE STORAGE GUIDE(S) [SNOW SHOE(S)] AND STORE 100 FEET OF EACH CABLE	65	BOND MESSENGER TO POLE GROUND
10	INSTALL RIGID, GALVANIZED STEEL CONDUIT	24	INSTALL NEW CONDUIT INTO POLE MOUNTED CABINET	38	INSTALL STANDARD SIZE JUNCTION BOX	52	INSTALL DELINEATOR MARKER	66	BOND RISER TO POLE GROUND
11	INSTALL RIGID, GALVANIZED STEEL RISER WITH WEATHERHEAD	25	INSTALL NEW RISER INTO POLE MOUNTED CABINET	39	INSTALL SPECIAL-SIZED JUNCTION BOX	53	STORE 50 FEET OF COMMUNICATIONS CABLE (EACH CABLE)	67	BOND TRACER WIRE TO EQUIPMENT GROUND BUS
12	INSTALL RIGID, GALVANIZED STEEL RISER WITH HEAT SHRINK TUBING	26	INSTALL DIGITAL VIDEO ENCODER	40	INSTALL OVER-SIZED JUNCTION BOX	54	LASH CABLE(S) TO EXISTING SIGNAL/COMMUNICATIONS CABLE	68	INSTALL NEW COVER ON OVER-SIZED JUNCTION BOX
13	INSTALL HEAT SHRINK TUBING RETROFIT KIT	27	INSTALL NEW ETHERNET EDGE SWITCH IN CABINET	41	REMOVE EXISTING JUNCTION BOX	55	LASH CABLE(S) TO EXISTING MESSENGER CABLE	69	INSTALL NEW BASE MOUNTED CCTV CABINET (336-A)
14	INSTALL HIGH DENSITY POLYETHYLENE CONDUIT	28	INSTALL INTERCONNECT CENTER, PATCH PANEL, JUMPERS, AND FUSION SPLICE CABLE IN CABINET	42	INSTALL WOOD POLE	56	LASH CABLE(S) TO NEW MESSENGER CABLE	70	INSTALL NEW POLE MOUNTED CCTV CABINET (NEMA TYPE 4)
							71	HANDLASH AND INSTALL AERIAL CABLE PROTECTOR	



M M
MOTT MACDONALD
 PO Box 700
 Fuquay-Varina, NC 27526
 www.mottmac.com
 License No. F-0669

Prepared for the Offices of:

 750 N. Greenfield Pkwy., Garner, NC 27529
 SCALE: 0 100'
 1"=100'

High Point Signal System Cable Routing Plans

Division 7 Guilford County High Point

PLAN DATE: February 2018 REVIEWED BY: R. THOMPSON

PREPARED BY: B. LEHAN REVIEWED BY:

REVISIONS	INIT.	DATE

DOCUMENT NOT CONSIDERED FINAL UNLESS ALL SIGNATURES COMPLETED

SEAL

 Brennan A. Lehan
 3/20/2018
 SIGNATURE DATE
 SIG. INVENTORY NO.