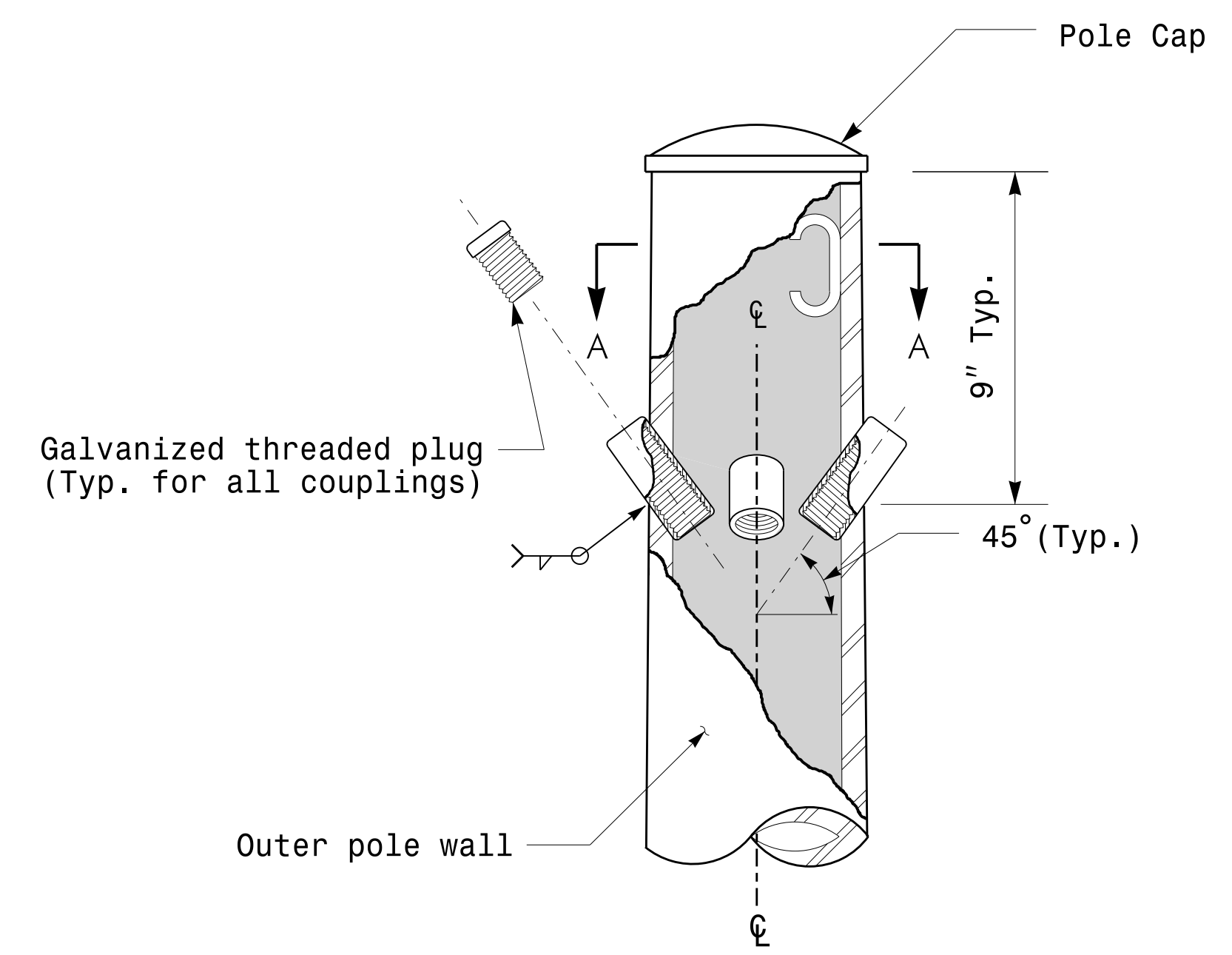
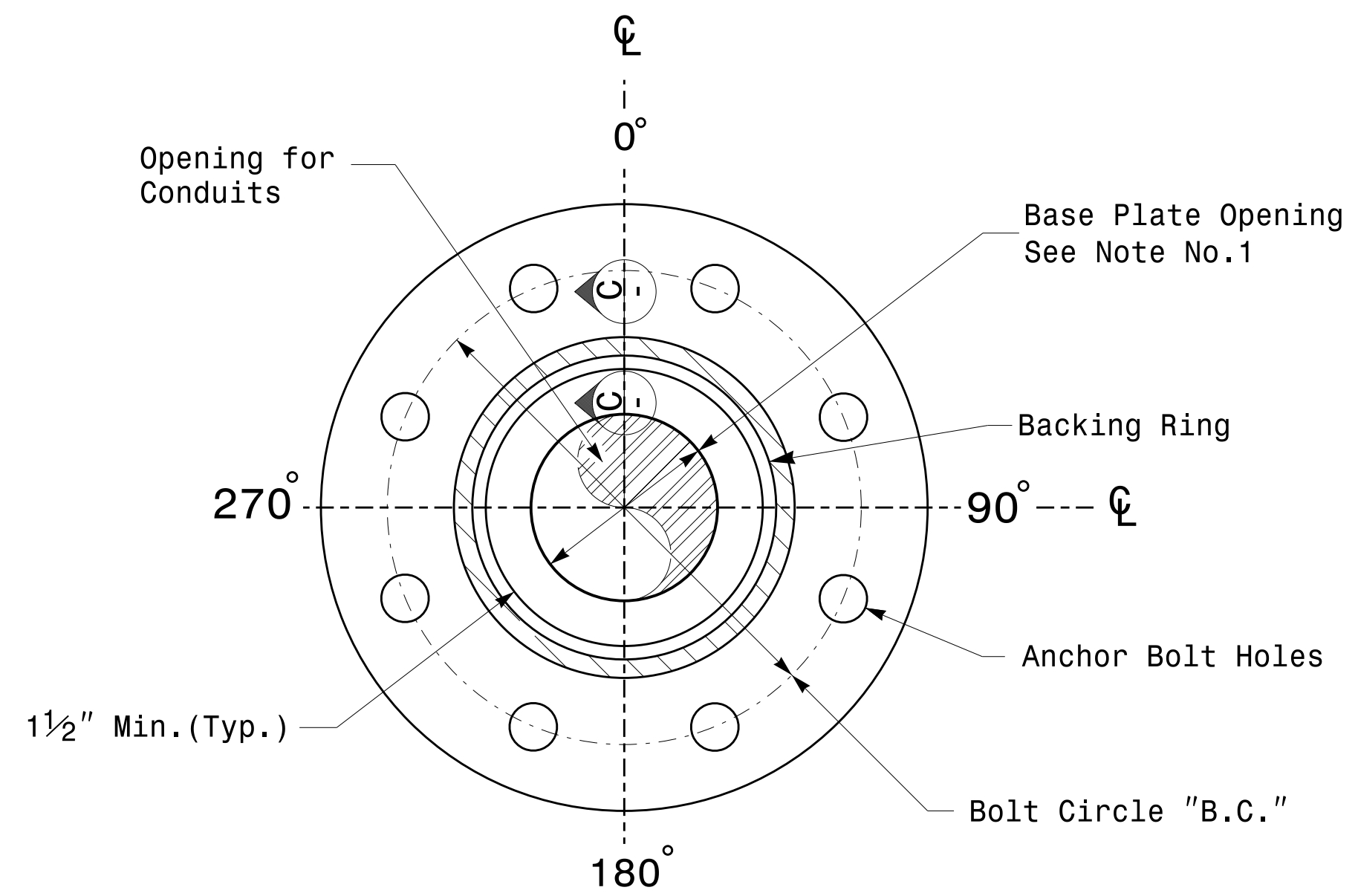


Note:  
 1. Opening in pole base plate shall be equal to pole base inside diameter minus 3 1/2" but shall not be less than 8 1/2".

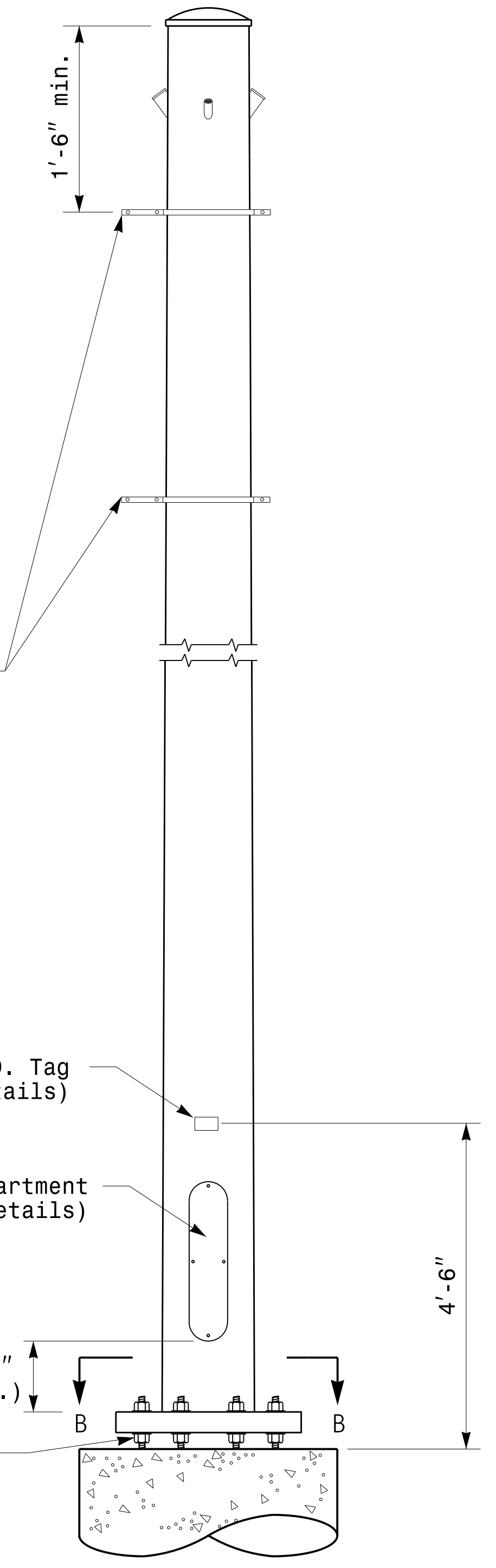


Cable Entrances at Top of Pole

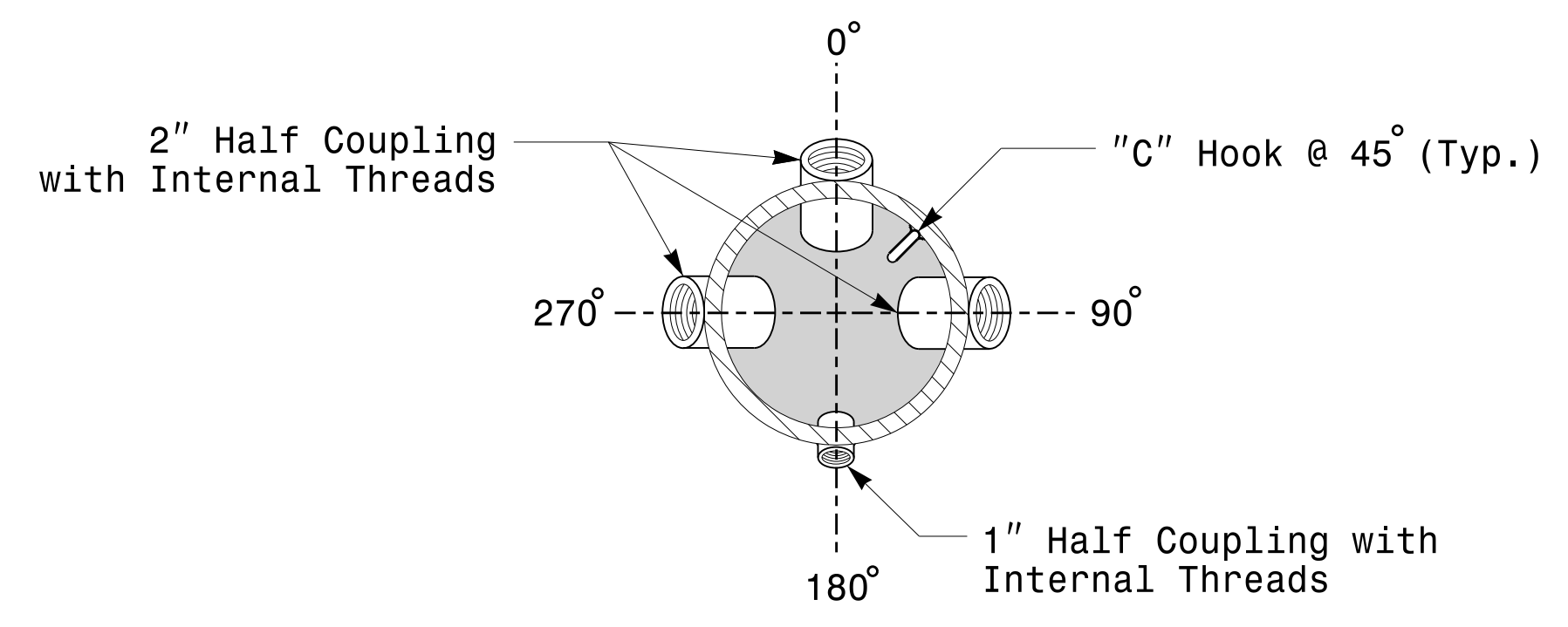


Section B-B  
Pole Base Plate Details  
(8 and 12 Bolt Pattern)

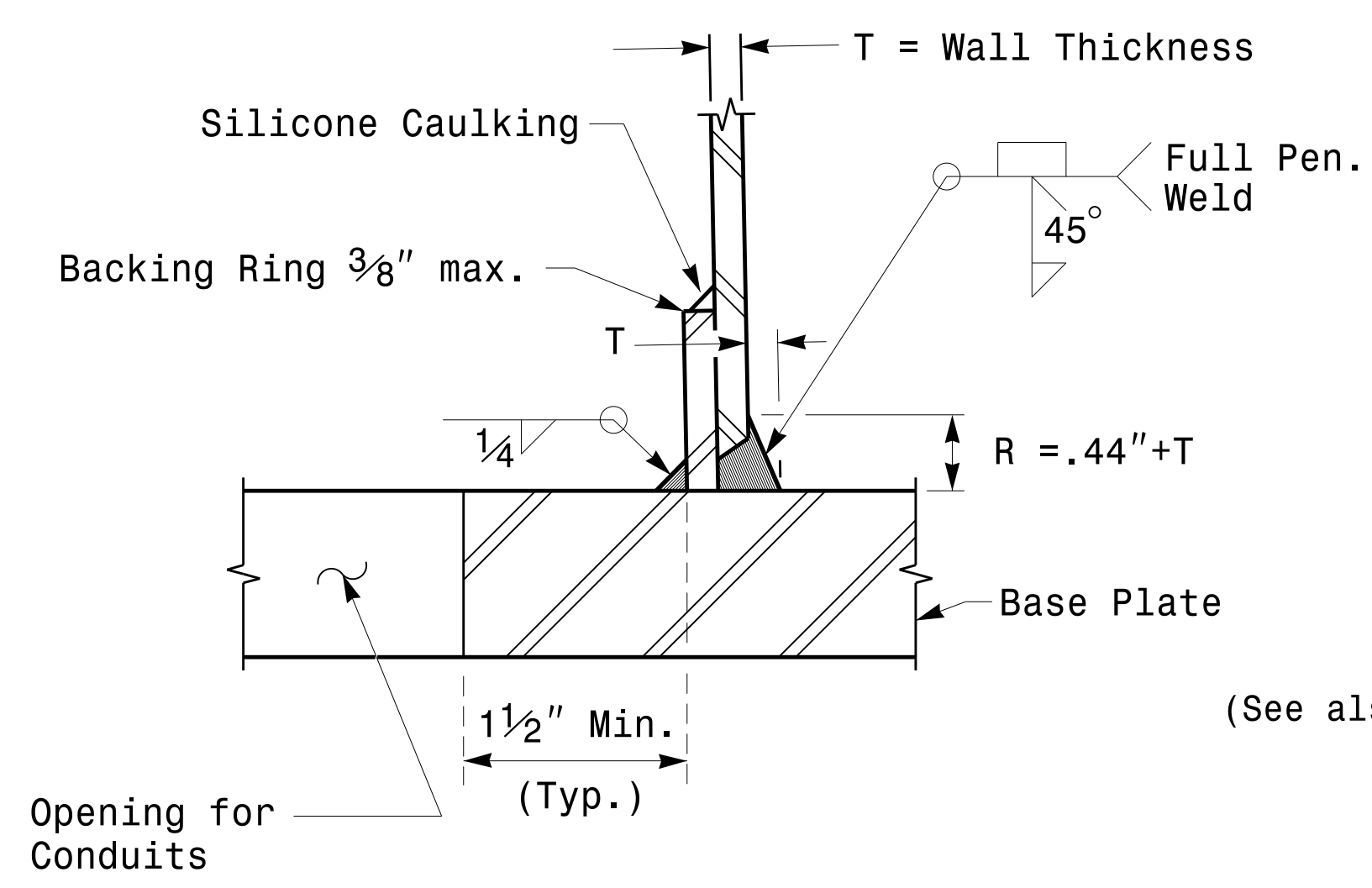
2 Cable Clamps designed for variable attachment heights from 1'-6" to 5'-0" below the top of the pole.



Monotube Strain Pole



Section A-A  
Radial Orientation for Factory Installed  
Accessories at Top of Pole



Section C-C  
(Pole Attachment to Base Plate)  
Full-Penetration  
Groove Weld Detail

Prepared in the Offices of:  
  
 750 N. Greenleaf Pkwy, Garner, NC 27529

|  |                           |
|--|---------------------------|
| Typical Fabrication Details For Strain Poles |                           |
| PLAN DATE: OCTOBER 2017                      | DESIGNED BY: K.C. DURIGON |
| PREPARED BY: N. BITTING                      | REVIEWED BY: D.C. SARKAR  |
| REVISIONS                                    | INIT. DATE                |
|  |                           |
|  |                           |

SEAL  
  
 DocuSigned by: *Dibesh C. Sarkar*  
 44EB87816FA74F9E  
 10/11/2017  
 DATE

11-OCT-2017 09:25  
 1365604115 Signal.svk:gnrc Design Section Eastern RegionM Sheets20162014 Sig.M3 Std. Fabrication Details-Strain Poles.dgn  
 PLOT: User

Fabrication Details – Strain Poles