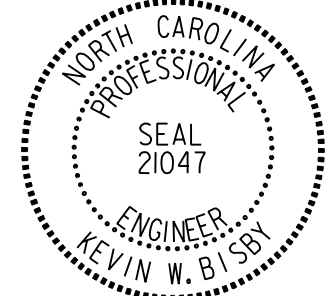
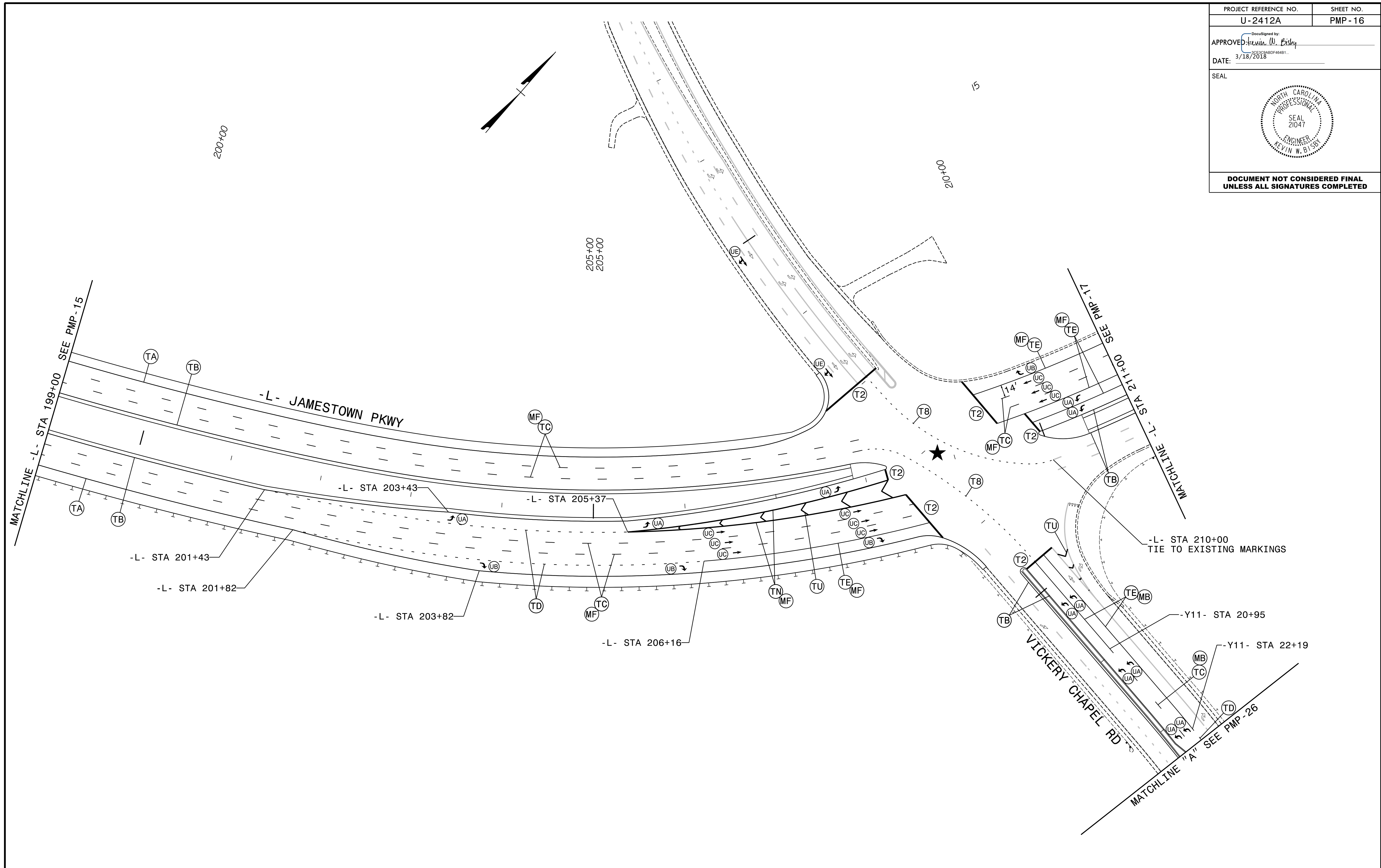


PROJECT REFERENCE NO. U-2412A	SHEET NO. PMP-16
APPROVED: <i>Kevin W. Eskey</i> DATE: 3/18/2018	
SEAL 	
DOCUMENT NOT CONSIDERED FINAL UNLESS ALL SIGNATURES COMPLETED	



PLANS PREPARED BY :



RUMMEL, KLEPPER & KAHL, LLP
900 RIDGEFIELD DRIVE SUITE 350
RALEIGH, NORTH CAROLINA 27609-3960
NC LICENSE NO. F-0112 • (919) 878-9560

★ TRAFFIC SIGNAL
LANE WIDTHS 12' UNLESS OTHERWISE SHOWN.
SEE PMP-16A FOR STOP BAR LOCATIONS.

PAVEMENT MARKING DETAIL

3/18/2018 PMP_PSH16.dgn