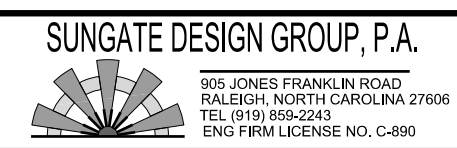


5/28/99

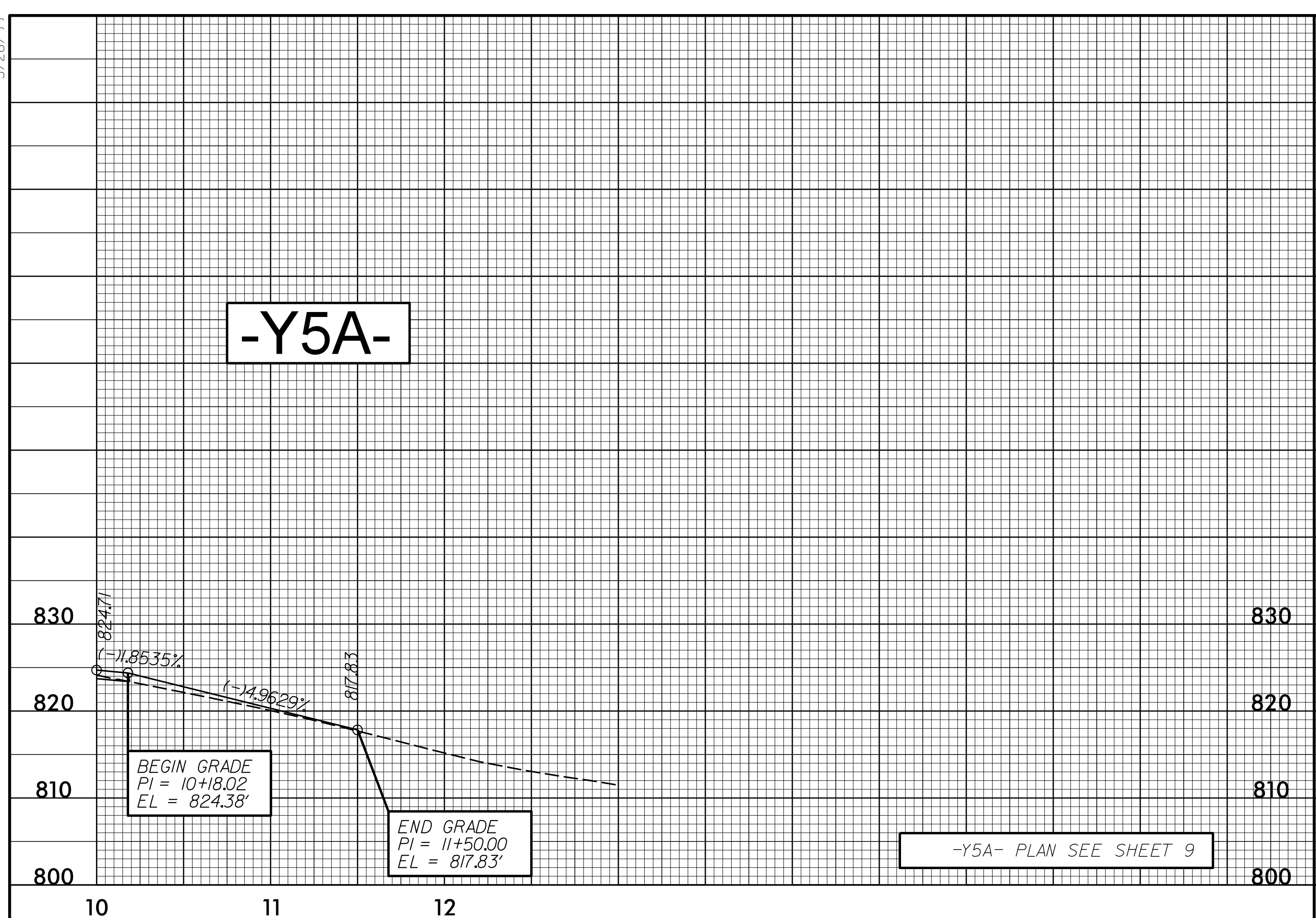


PROJECT REFERENCE NO. U-2412A	SHEET NO. 37
ROADWAY DESIGN ENGINEER	HYDRAULICS ENGINEER

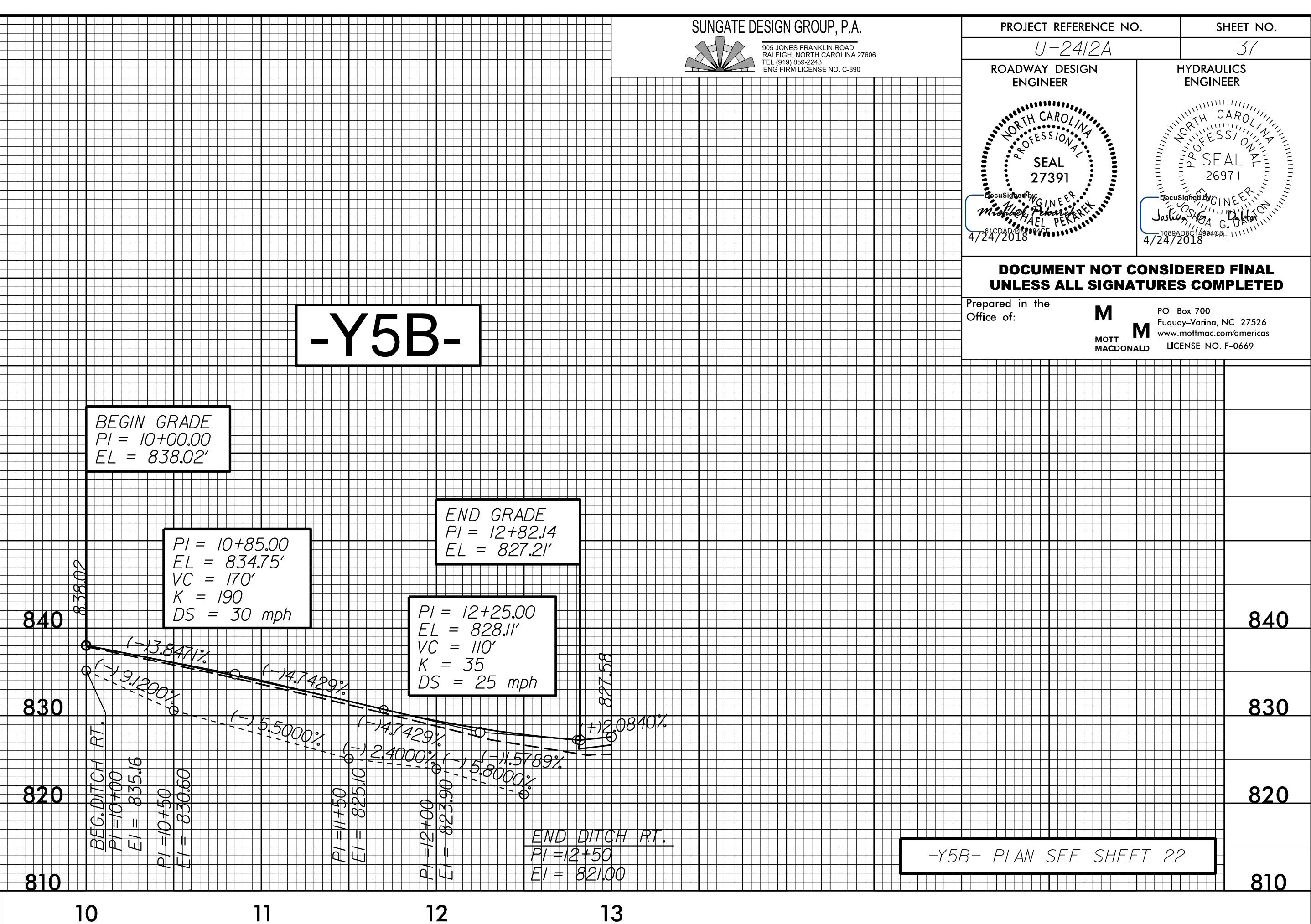
**DOCUMENT NOT CONSIDERED FINAL
UNLESS ALL SIGNATURES COMPLETED**

Prepared in the Office of: **M** MOTT MACDONALD

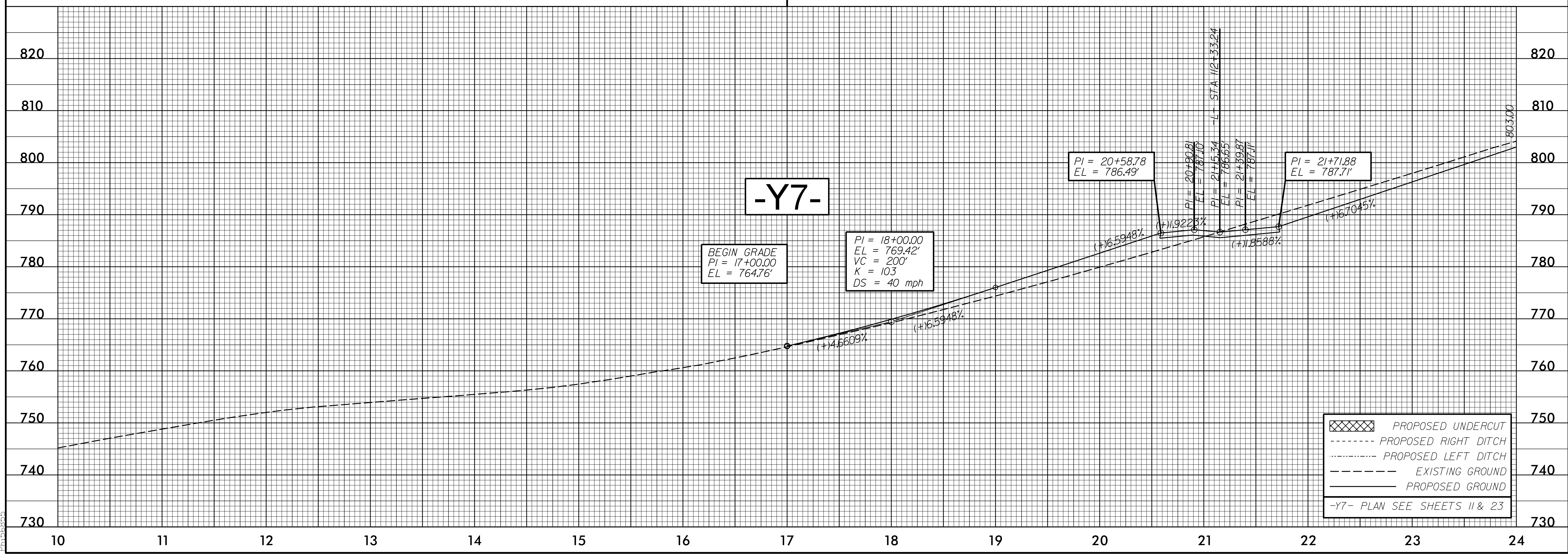
PO Box 700
Fuquay-Varina, NC 27526
www.mottmac.com/americas
LICENSE NO. F-0669



-Y5A- PLAN SEE SHEET 9



-Y5B- PLAN SEE SHEET 22



	PROPOSED UNDERCUT
	PROPOSED RIGHT DITCH
	PROPOSED LEFT DITCH
	EXISTING GROUND
	PROPOSED GROUND

-Y7- PLAN SEE SHEETS 11 & 23

I:\5619_PM\15619\roadway\pco\2412a_rdy_psh_pfl.dgn