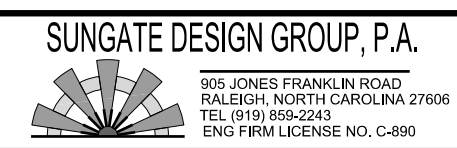


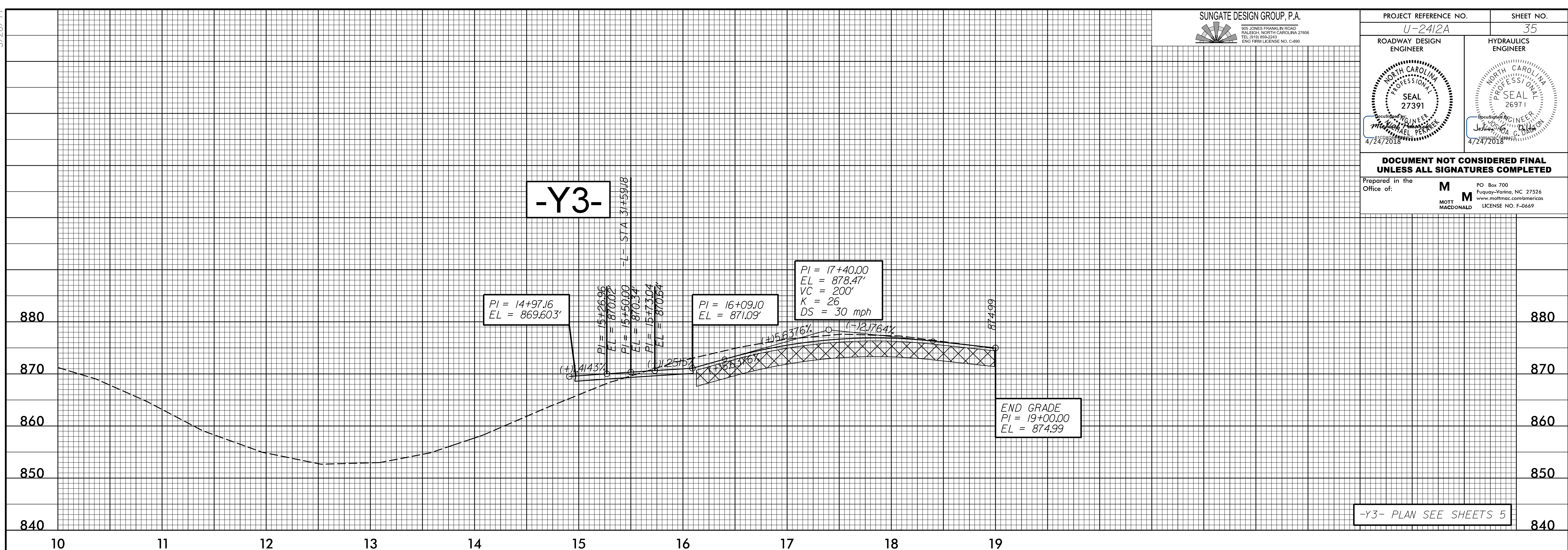
5/28/19



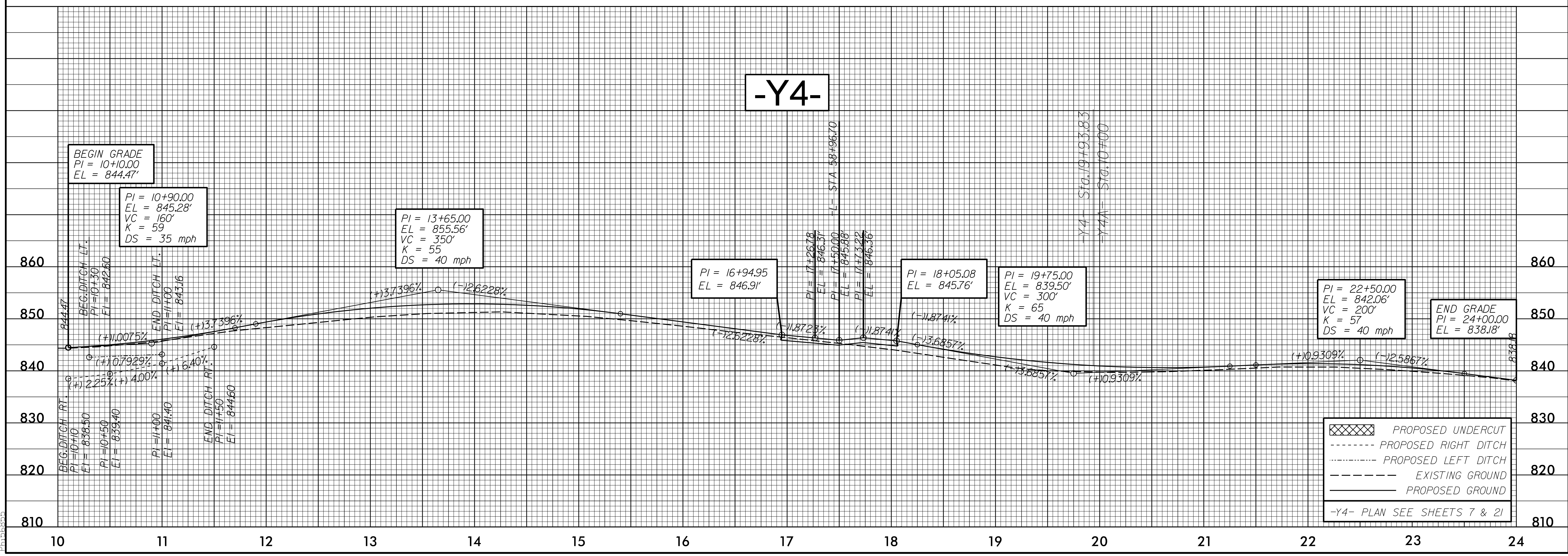
PROJECT REFERENCE NO. U-2412A	SHEET NO. 35
ROADWAY DESIGN ENGINEER 	HYDRAULICS ENGINEER

DOCUMENT NOT CONSIDERED FINAL UNLESS ALL SIGNATURES COMPLETED

Prepared in the Office of: **M** MOTT MACDONALD
 PO Box 700, Fuquay-Varina, NC 27526
 www.mottmac.com/mcaricos, LICENSE NO. F-0669



-Y3- PLAN SEE SHEETS 5



	PROPOSED UNDERCUT
	PROPOSED RIGHT DITCH
	PROPOSED LEFT DITCH
	EXISTING GROUND
	PROPOSED GROUND

-Y4- PLAN SEE SHEETS 7 & 21

I:\618_P\1\618_roadway\proj\2412a_rdu_psh_pf1.dgn