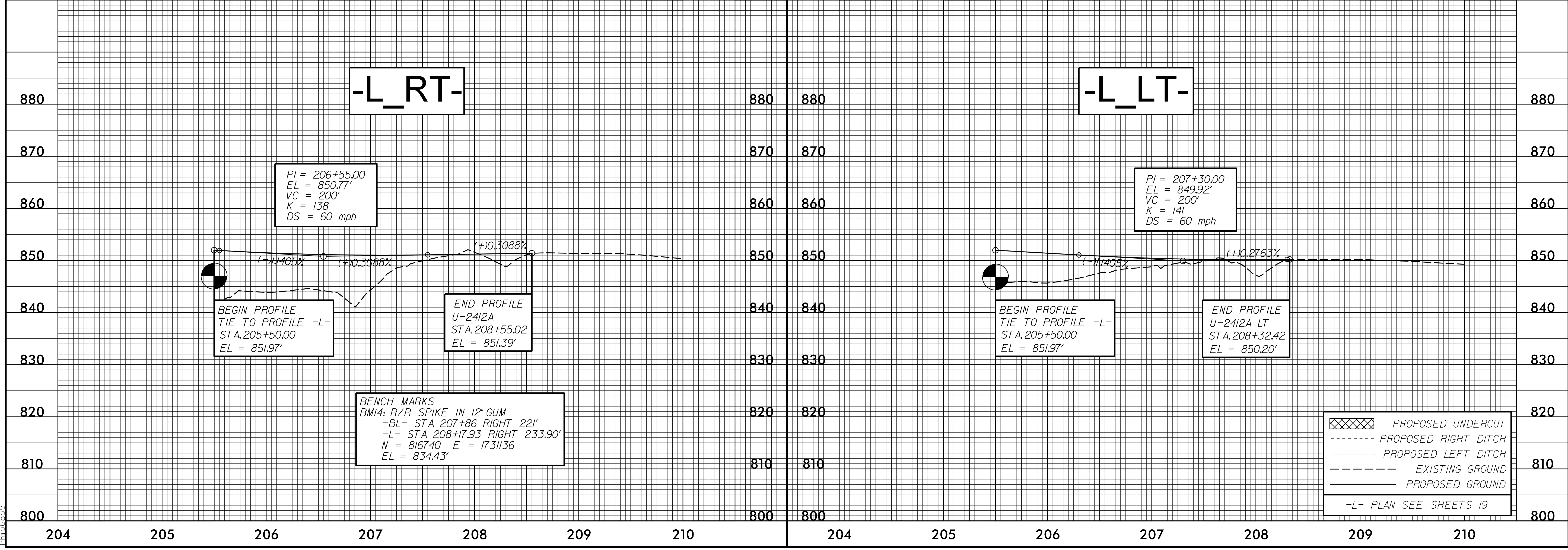
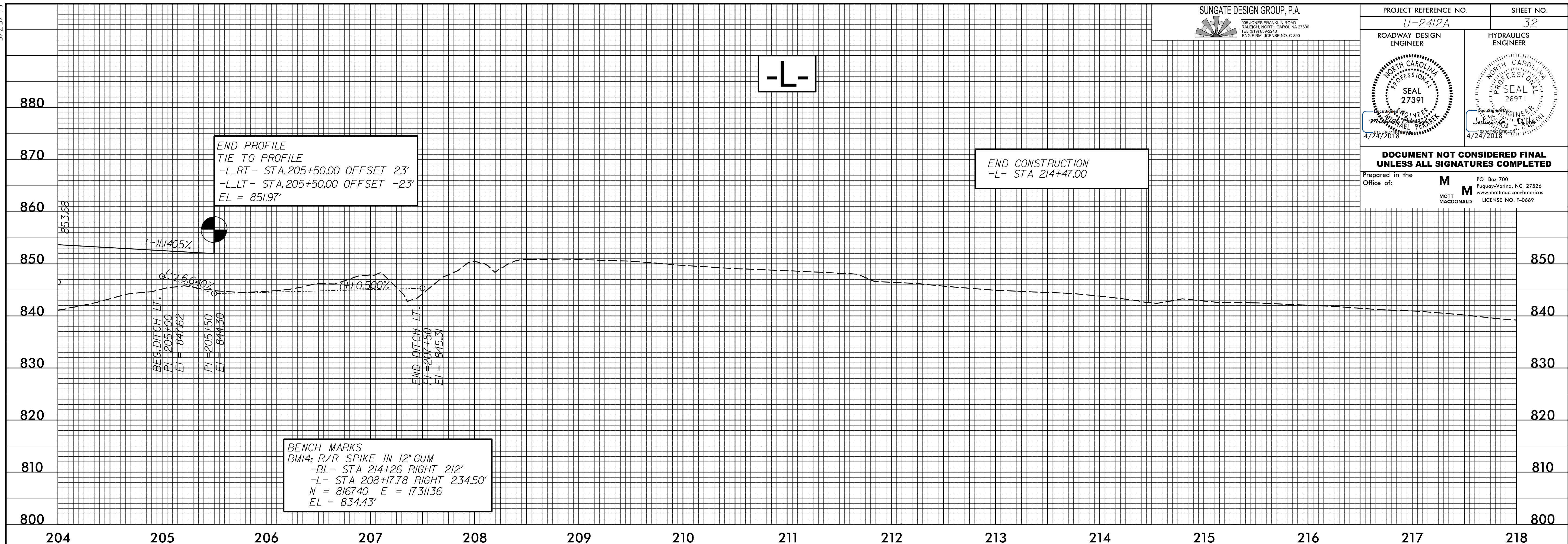


5/28/19

PROJECT REFERENCE NO. U-2412A	SHEET NO. 32
ROADWAY DESIGN ENGINEER 	HYDRAULICS ENGINEER 
DOCUMENT NOT CONSIDERED FINAL UNLESS ALL SIGNATURES COMPLETED	
Prepared in the Office of: <b>M</b> MOTT MACDONALD	PO Box 700 Fuquay-Varina, NC 27526 www.mottmac.com/americas LICENSE NO. F-0669



	PROPOSED UNDERCUT
	PROPOSED RIGHT DITCH
	PROPOSED LEFT DITCH
	EXISTING GROUND
	PROPOSED GROUND
-L-	PLAN SEE SHEETS 19

I:\617 PM Roadway\proj\2412a\_rdu\_psh\_pf1.dgn  
PL166835