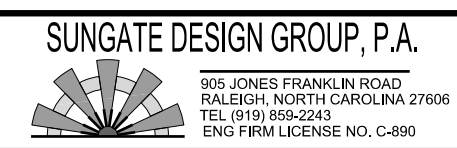


5/28/19



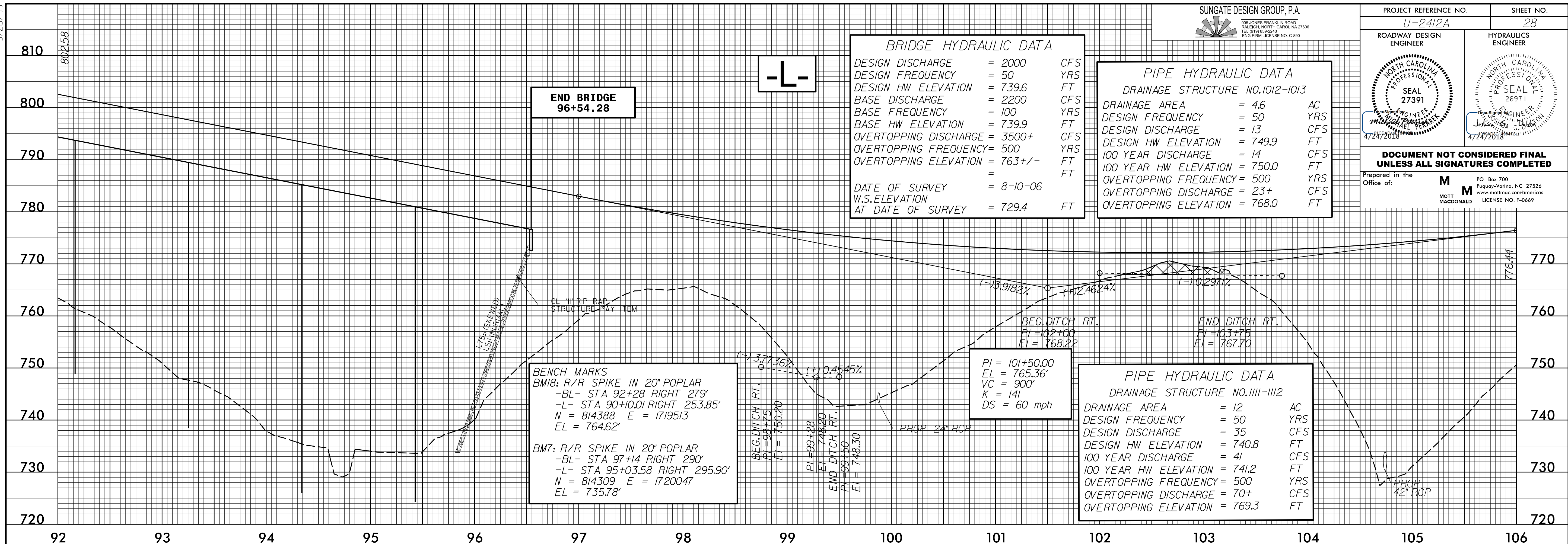
PROJECT REFERENCE NO. U-2412A		SHEET NO. 28	
ROADWAY DESIGN ENGINEER		HYDRAULICS ENGINEER	
DOCUMENT NOT CONSIDERED FINAL UNLESS ALL SIGNATURES COMPLETED			
Prepared in the Office of:		 MOTT MACDONALD License No. F-0669	

BRIDGE HYDRAULIC DATA

DESIGN DISCHARGE	= 2000	CFS
DESIGN FREQUENCY	= 50	YRS
DESIGN HW ELEVATION	= 739.6	FT
BASE DISCHARGE	= 2200	CFS
BASE FREQUENCY	= 100	YRS
BASE HW ELEVATION	= 739.9	FT
OVERTOPPING DISCHARGE	= 3500+	CFS
OVERTOPPING FREQUENCY	= 500	YRS
OVERTOPPING ELEVATION	= 763+/-	FT
DATE OF SURVEY	= 8-10-06	
W.S. ELEVATION AT DATE OF SURVEY	= 729.4	FT

PIPE HYDRAULIC DATA
DRAINAGE STRUCTURE NO.1012-1013

DRAINAGE AREA	= 4.6	AC
DESIGN FREQUENCY	= 50	YRS
DESIGN DISCHARGE	= 13	CFS
DESIGN HW ELEVATION	= 749.9	FT
100 YEAR DISCHARGE	= 14	CFS
100 YEAR HW ELEVATION	= 750.0	FT
OVERTOPPING FREQUENCY	= 500	YRS
OVERTOPPING DISCHARGE	= 23+	CFS
OVERTOPPING ELEVATION	= 768.0	FT



PIPE HYDRAULIC DATA
DRAINAGE STRUCTURE NO.1013-1012

DRAINAGE AREA	= 12	AC
DESIGN FREQUENCY	= 50	YRS
DESIGN DISCHARGE	= 35	CFS
DESIGN HW ELEVATION	= 740.8	FT
100 YEAR DISCHARGE	= 41	CFS
100 YEAR HW ELEVATION	= 741.2	FT
OVERTOPPING FREQUENCY	= 500	YRS
OVERTOPPING DISCHARGE	= 70+	CFS
OVERTOPPING ELEVATION	= 769.3	FT

BENCH MARKS
 BM8: R/R SPIKE IN 20" POPLAR
 -BL- STA 92+28 RIGHT 279'
 -L- STA 90+10.01 RIGHT 253.85'
 N = 814388 E = 1719513
 EL = 764.62'
 BM7: R/R SPIKE IN 20" POPLAR
 -BL- STA 97+14 RIGHT 290'
 -L- STA 95+03.58 RIGHT 295.90'
 N = 814309 E = 1720047
 EL = 735.78'

PIPE HYDRAULIC DATA

PI = 112+40.00	EL = 792.20'
VC = 800'	
K = 157	
DS = 60 mph	

BENCH MARKS
 BM8: R/R SPIKE IN 18" HICKORY
 -BL- STA 108+38 RIGHT 213'
 -L- STA 106+28.38 RIGHT 224.83'
 N = 814526 E = 1721178
 EL = 776.23'

	PROPOSED UNDERCUT
	PROPOSED RIGHT DITCH
	PROPOSED LEFT DITCH
	EXISTING GROUND
	PROPOSED GROUND

-L- PLAN SEE SHEETS 10, 11 & 12

1:56:15 PM
I:\615\adway\pcoj\2412a_rdy_psh_pfl.dgn
P1:0669