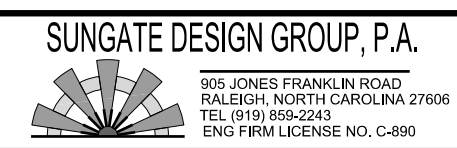
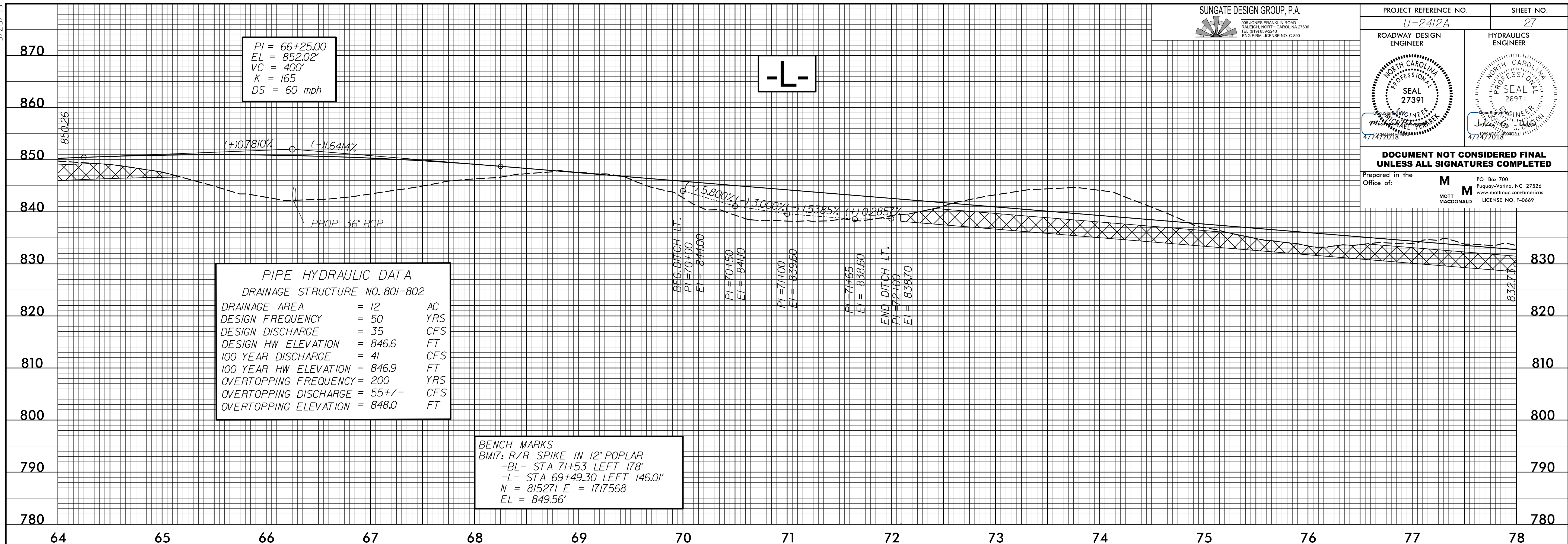


5/28/19



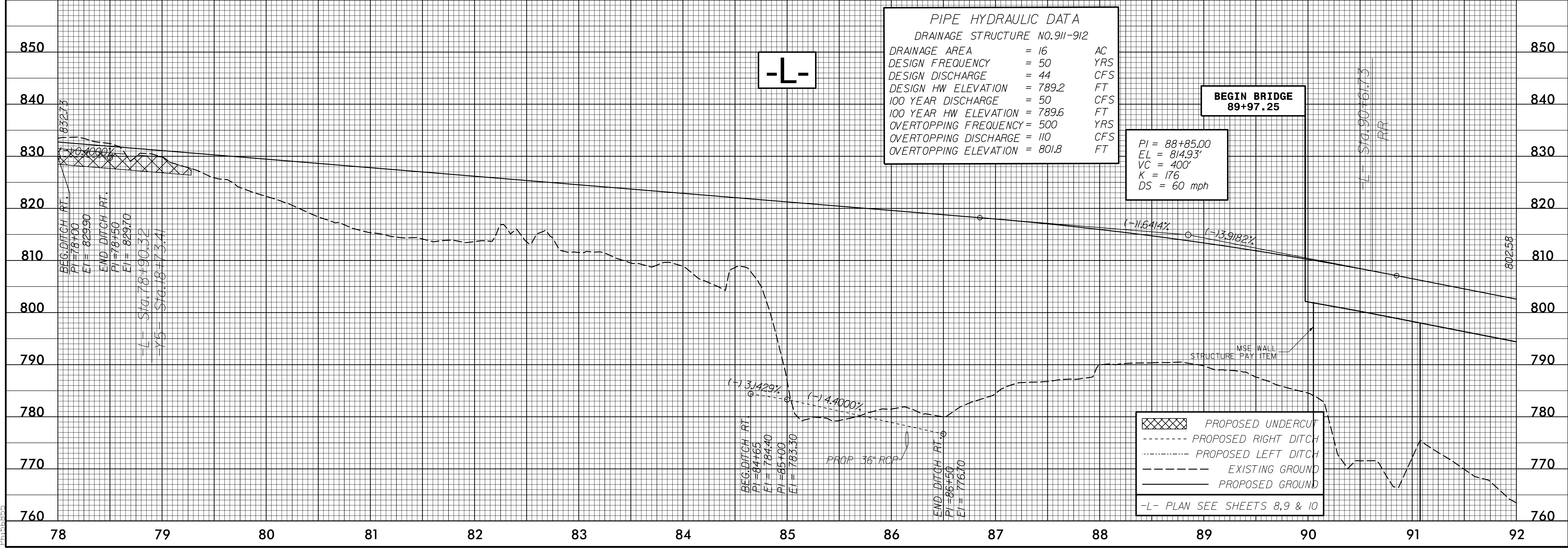
PROJECT REFERENCE NO. U-2412A	SHEET NO. 27
ROADWAY DESIGN ENGINEER	HYDRAULICS ENGINEER
DOCUMENT NOT CONSIDERED FINAL UNLESS ALL SIGNATURES COMPLETED	
Prepared in the Office of:	MOTT MACDONALD
PO Box 700 Fuquay-Varina, NC 27526 www.mottmac.com/america	LICENSE NO. F-0669



PIPE HYDRAULIC DATA
DRAINAGE STRUCTURE NO. 801-802

DRAINAGE AREA	= 12	AC
DESIGN FREQUENCY	= 50	YRS
DESIGN DISCHARGE	= 35	CFS
DESIGN HW ELEVATION	= 846.6	FT
100 YEAR DISCHARGE	= 41	CFS
100 YEAR HW ELEVATION	= 846.9	FT
OVERTOPPING FREQUENCY	= 200	YRS
OVERTOPPING DISCHARGE	= 55 +/-	CFS
OVERTOPPING ELEVATION	= 848.0	FT

BENCH MARKS
BM1: R/R SPIKE IN 12" POPLAR
-BL- STA 71+53 LEFT 178'
-L- STA 69+49.30 LEFT 146.0'
N = 815271 E = 1717568
EL = 849.56'



PIPE HYDRAULIC DATA
DRAINAGE STRUCTURE NO. 911-912

DRAINAGE AREA	= 16	AC
DESIGN FREQUENCY	= 50	YRS
DESIGN DISCHARGE	= 44	CFS
DESIGN HW ELEVATION	= 789.2	FT
100 YEAR DISCHARGE	= 50	CFS
100 YEAR HW ELEVATION	= 789.6	FT
OVERTOPPING FREQUENCY	= 500	YRS
OVERTOPPING DISCHARGE	= 110	CFS
OVERTOPPING ELEVATION	= 801.8	FT

PI = 88+85.00
EL = 814.93'
VC = 400'
K = 176
DS = 60 mph

LEGEND

- PROPOSED UNDERCUT
- PROPOSED RIGHT DITCH
- PROPOSED LEFT DITCH
- EXISTING GROUND
- PROPOSED GROUND

-L- PLAN SEE SHEETS 8, 9 & 10

I:\614 PM\191904\roadway\pco\2412a_rdy_psh.pfl.dgn