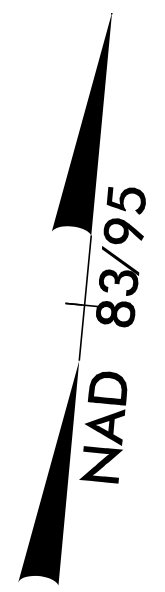
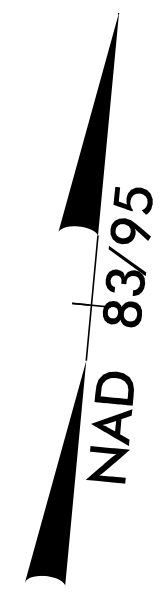
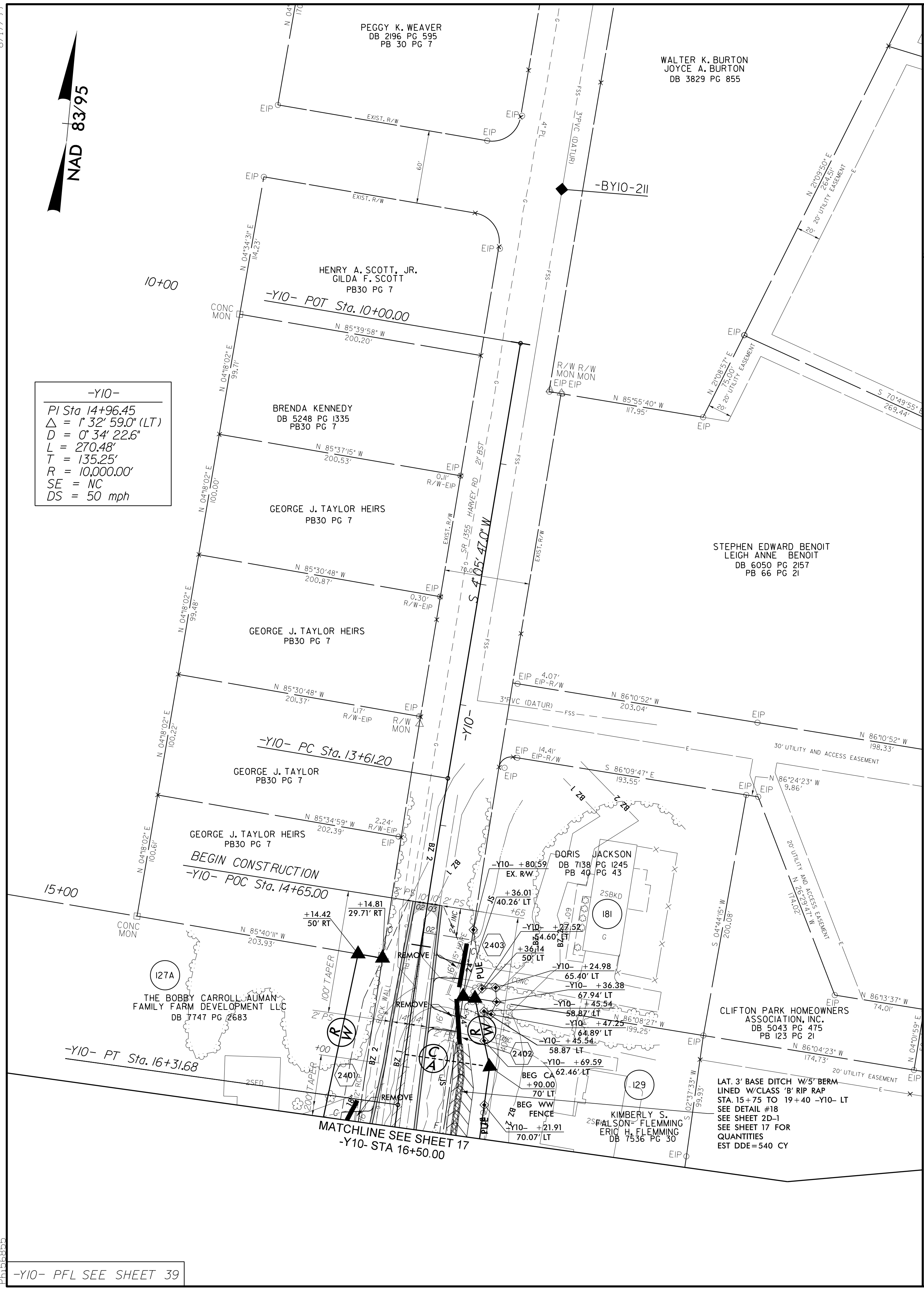


8.17.7.99

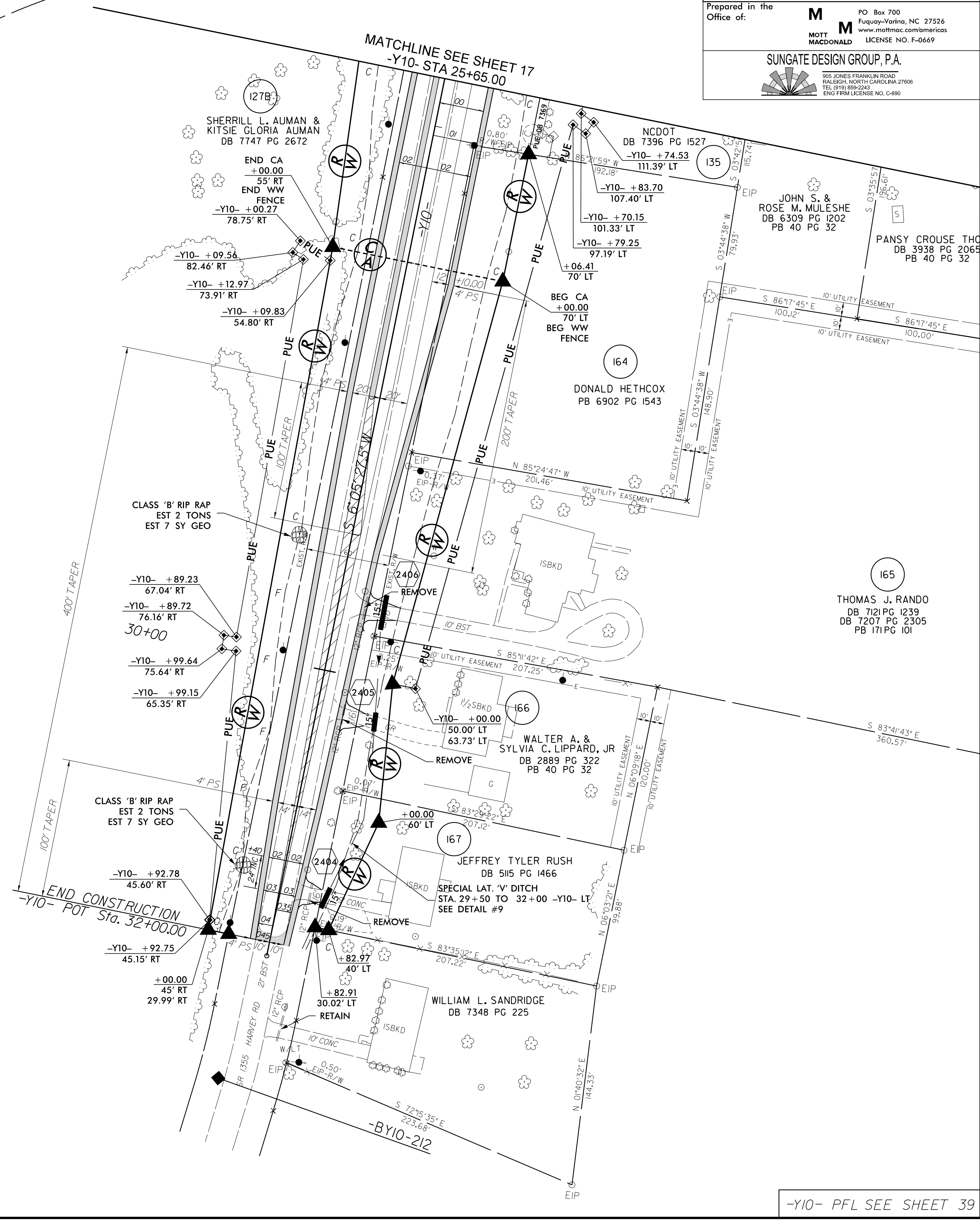


-Y10-

PI Sta 14+96.45
 $\Delta = 1^{\circ}32'59.0''$ (LT)
 $D = 0^{\circ}34'22.6''$
 $L = 270.48'$
 $T = 135.25'$
 $R = 10,000.00'$
 $SE = NC$
 $DS = 50$ mph



PROJECT REFERENCE NO. U-2412A	SHEET NO. 24
RW SHEET NO. 23	
ROADWAY DESIGN ENGINEER	HYDRAULICS ENGINEER
DOCUMENT NOT CONSIDERED FINAL UNLESS ALL SIGNATURES COMPLETED	
Prepared in the Office of:	MOTT MACDONALD
SUNGATE DESIGN GROUP, P.A.	



4.9.22 PM
H:\Projects\2018\2412a_rdu_psh24.dgn
PL166885

-Y10- PFL SEE SHEET 39

-Y10- PFL SEE SHEET 39