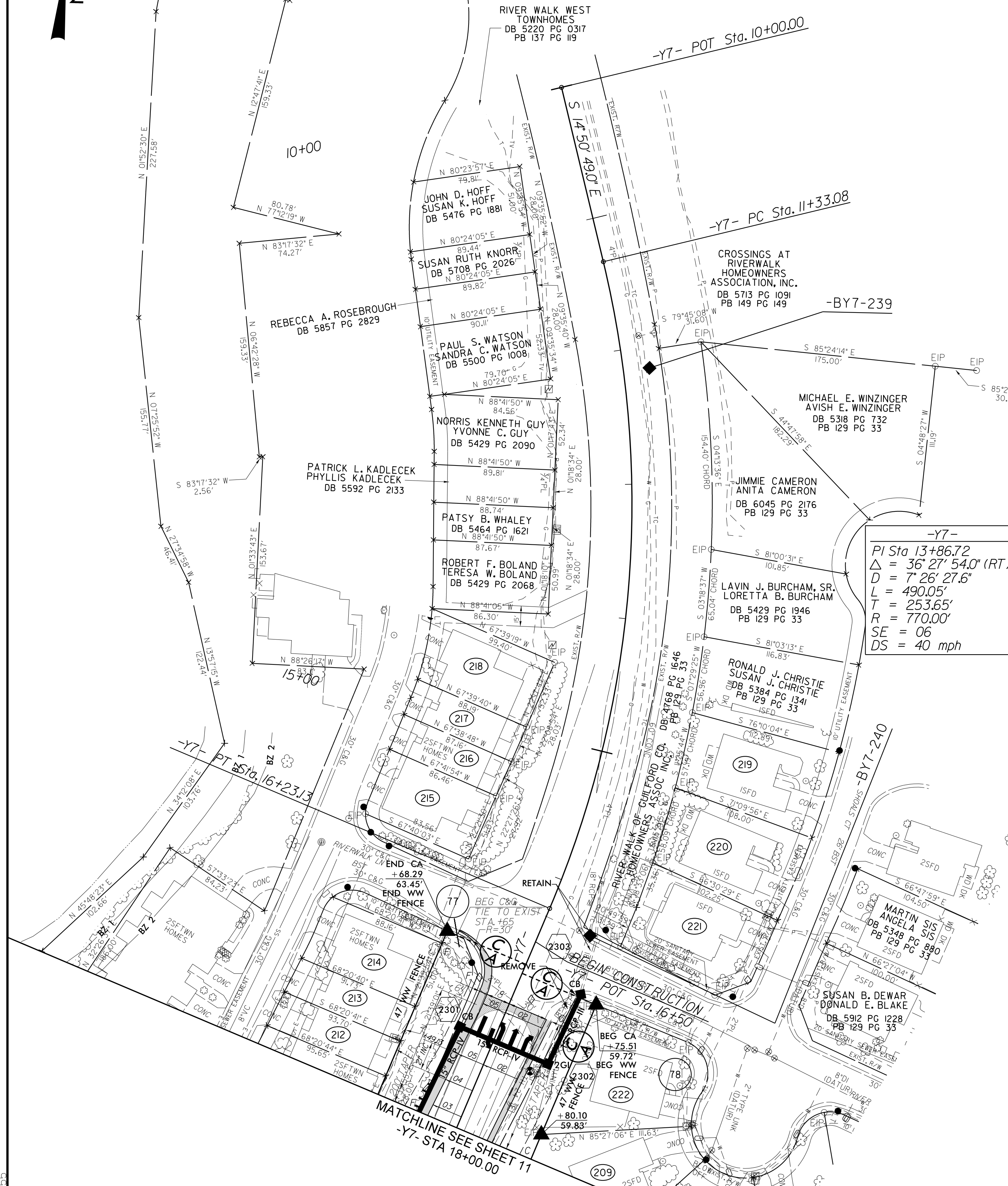


8.17.19

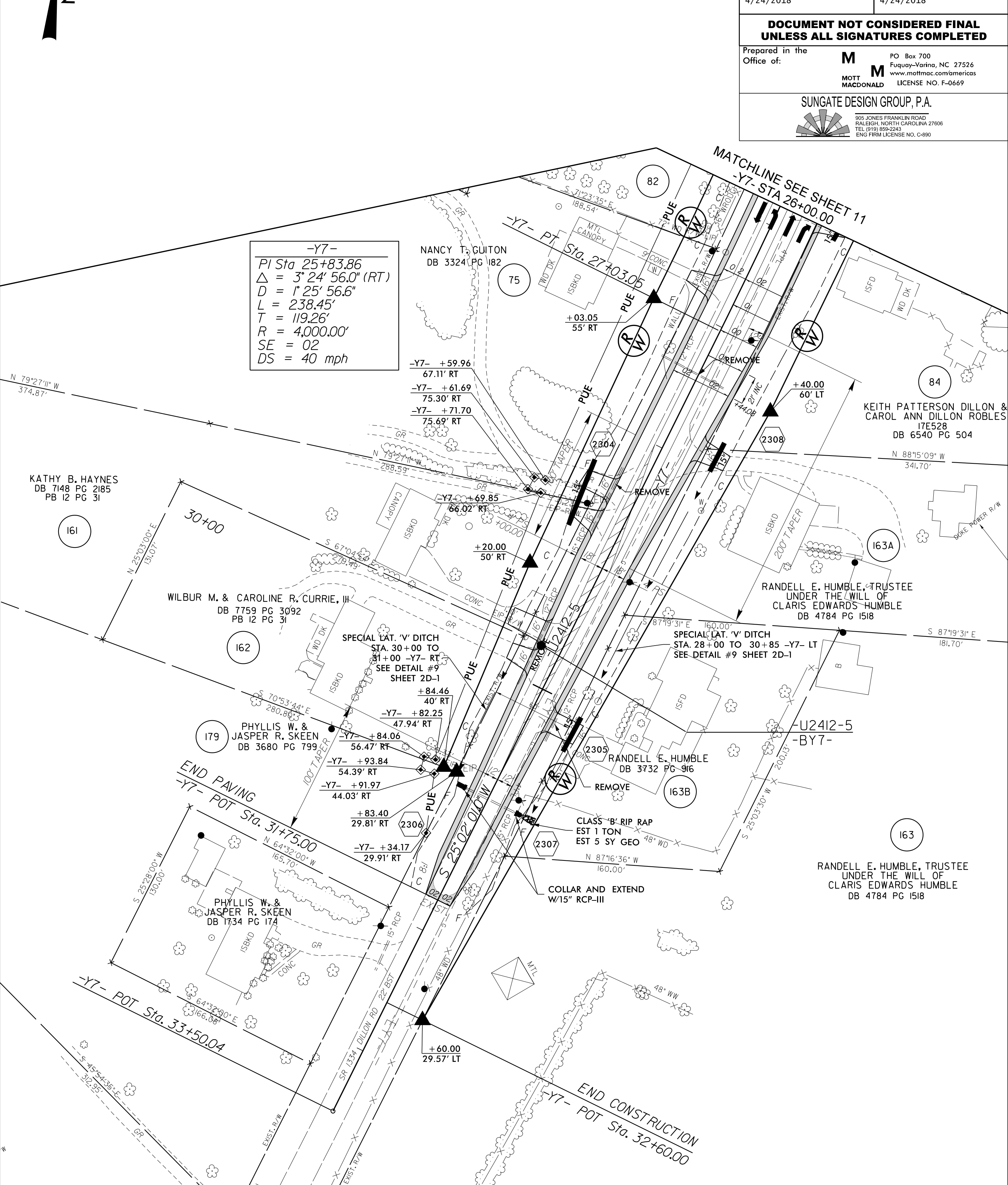
NAD 83/95

- 209 DONALD F. & THELMA C. BOWMAN DB 7381 PG 604 PB 127 PG 81
- 210 CARLA J. SAM DB 6234 PG 244
- 211 JENNIFER L. PARNELL DB 5868 PG 725
- 220 M. LAWSON FREEMAN BETTIE P. FREEMAN, ET. AL. DB 5481 PG 1363 PB 129 PG 33
- 212 WADE R. GABEL DB 5252 PG 666
- 215 KHARI-LEE B. THORNTON DB 5737 PG 568
- 218 JERRY LEE ROSE DB 5830 PG 129
- 221 CHRISTOPHER J. & BEVERLY A. ROYCE DB 4967 PG 0363 PB 129 PG 33
- 213 SCOTT A. DALY DB 7080 PG 2036
- 216 JODN D. SCHUCK JAMI R. SCHUCK DB 5874 PG 984
- 219 RUTH P. KUTTRUF DB 6176 PG 2066 PB 129 PG 33
- 222 MATTHEW C. & JENNIFER T. GEE DB 7153 PG 2111 PB 127 PG 81



NAD 83/95

PROJECT REFERENCE NO. U-2412A	SHEET NO. 23
ROADWAY DESIGN ENGINEER	HYDRAULICS ENGINEER
DOCUMENT NOT CONSIDERED FINAL UNLESS ALL SIGNATURES COMPLETED	
Prepared in the Office of:	M PO Box 700 Fuquay-Varina, NC 27526 www.mottmac.com/americs MOTT MACDONALD LICENSE NO. F-0669
SUNGATE DESIGN GROUP, P.A. <small>905 JONES FRANKLIN ROAD RALEIGH, NORTH CAROLINA 27608 TEL: (919) 866-2444 ENG FIRM LICENSE NO. C-690</small>	



-Y7- PFL SEE SHEET 37

-Y7- PFL SEE SHEET 38

1:49:28 PM
I:\projects\2019\2412a_rdu_psh\23.dgn
PL106835