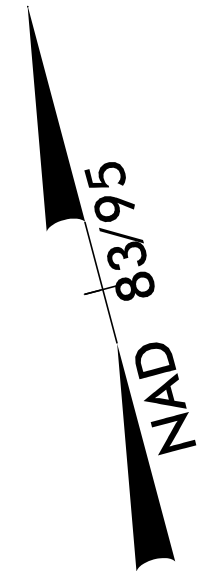
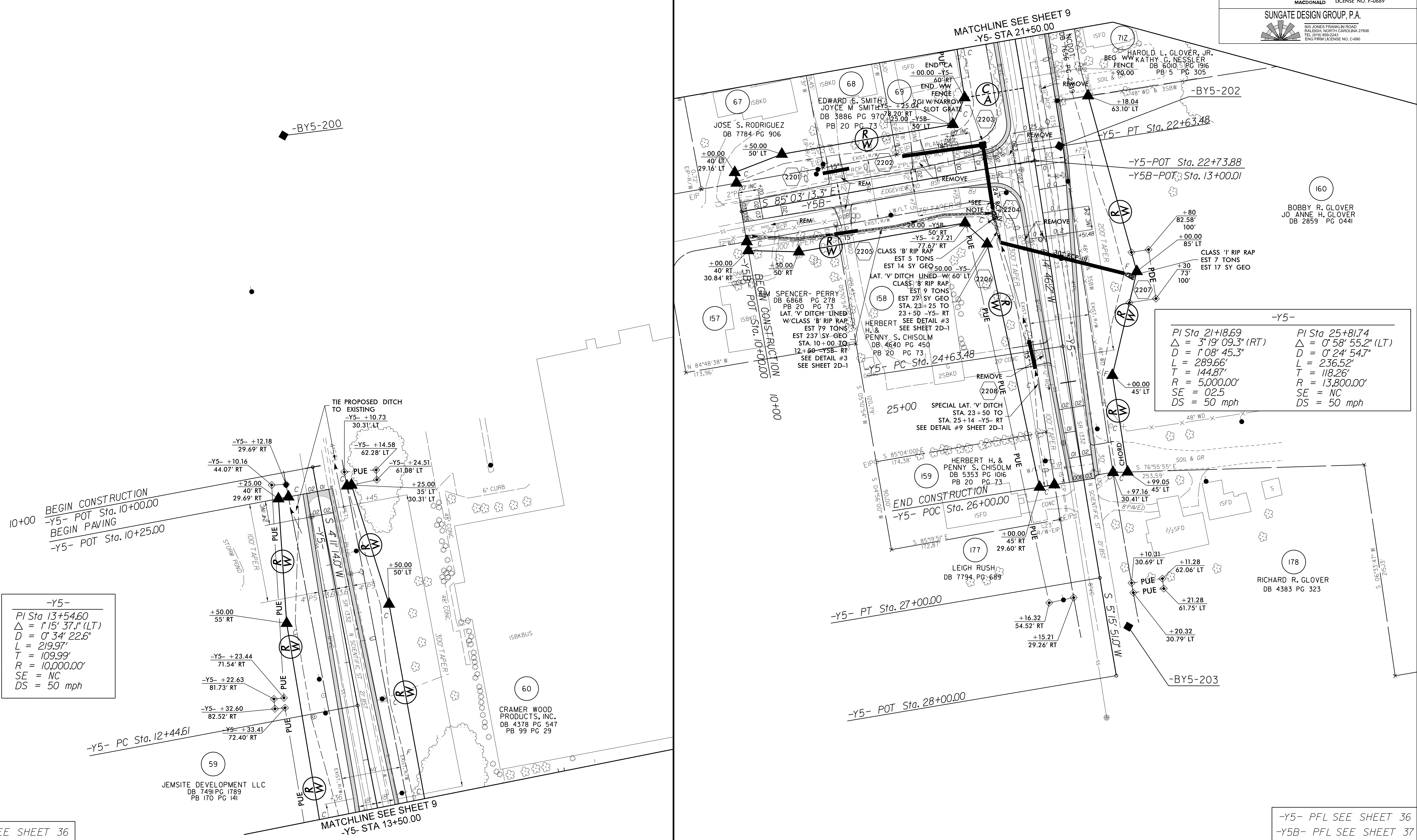
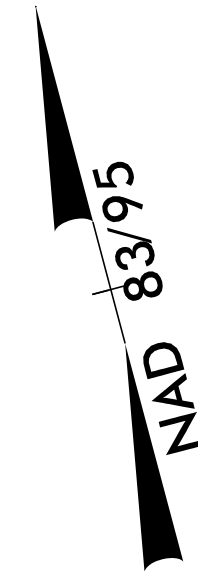


8.17.17.99



PROJECT REFERENCE NO. U-2412A		SHEET NO. 22	
ROADWAY DESIGN ENGINEER		HYDRAULICS ENGINEER	
RW SHEET NO. 21		21	
<b>DOCUMENT NOT CONSIDERED FINAL UNLESS ALL SIGNATURES COMPLETED</b>			
Prepared in the Office of:		<b>M</b> PO Box 700 Fuquay-Varina, NC 27526 www.mottmac.com/americas MOTT MACDONALD LICENSE NO. F-0669	
<b>SUNGATE DESIGN GROUP, P.A.</b> 			



-Y5-  
 PI Sta 13+54.60  
 $\Delta = 1'15" 37.1" (LT)$   
 $D = 0' 34" 22.6"$   
 $L = 219.97'$   
 $T = 109.99'$   
 $R = 10,000.00'$   
 $SE = NC$   
 $DS = 50 \text{ mph}$

-Y5-  
 PI Sta 21+18.69      PI Sta 25+81.74  
 $\Delta = 3' 19" 09.3" (RT)$        $\Delta = 0' 58" 55.2" (LT)$   
 $D = 1' 08" 45.3"$        $D = 0' 24" 54.7"$   
 $L = 289.66'$        $L = 236.52'$   
 $T = 144.87'$        $T = 118.26'$   
 $R = 5,000.00'$        $R = 13,800.00'$   
 $SE = 02.5$        $SE = NC$   
 $DS = 50 \text{ mph}$        $DS = 50 \text{ mph}$

-Y5- PFL SEE SHEET 36

-Y5- PFL SEE SHEET 36  
-Y5B- PFL SEE SHEET 37

14.09.05 PM  
+:\w\schau\p\o\j\2412a\_r\du\_psh\22.dgn  
PL166835