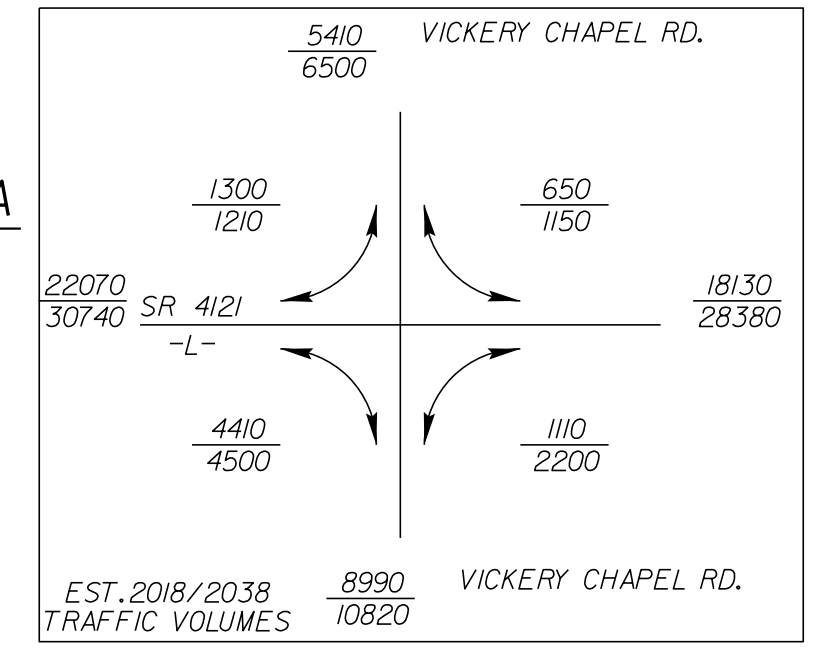


PROJECT REFERENCE NO. U-2412A		SHEET NO. 19	
ROADWAY DESIGN ENGINEER		HYDRAULICS ENGINEER	
<p>DOCUMENT NOT CONSIDERED FINAL UNLESS ALL SIGNATURES COMPLETED</p> <p>Prepared in the Office of: M MOTT MACDONALD</p> <p>PO Box 700 Fuquay-Varina, NC 27526 www.mottmac.com/america LICENSE NO. F-0669</p> <p>SUNGATE DESIGN GROUP, P.A. 905 JONES FRANKLIN ROAD RALEIGH, NORTH CAROLINA 27608 TEL: (919) 866-2424 ENG FIRM LICENSE NO. C-800</p>			

KOURY VENTURES LIMITED PARTNERSHIP
DB 6568 PG 2468



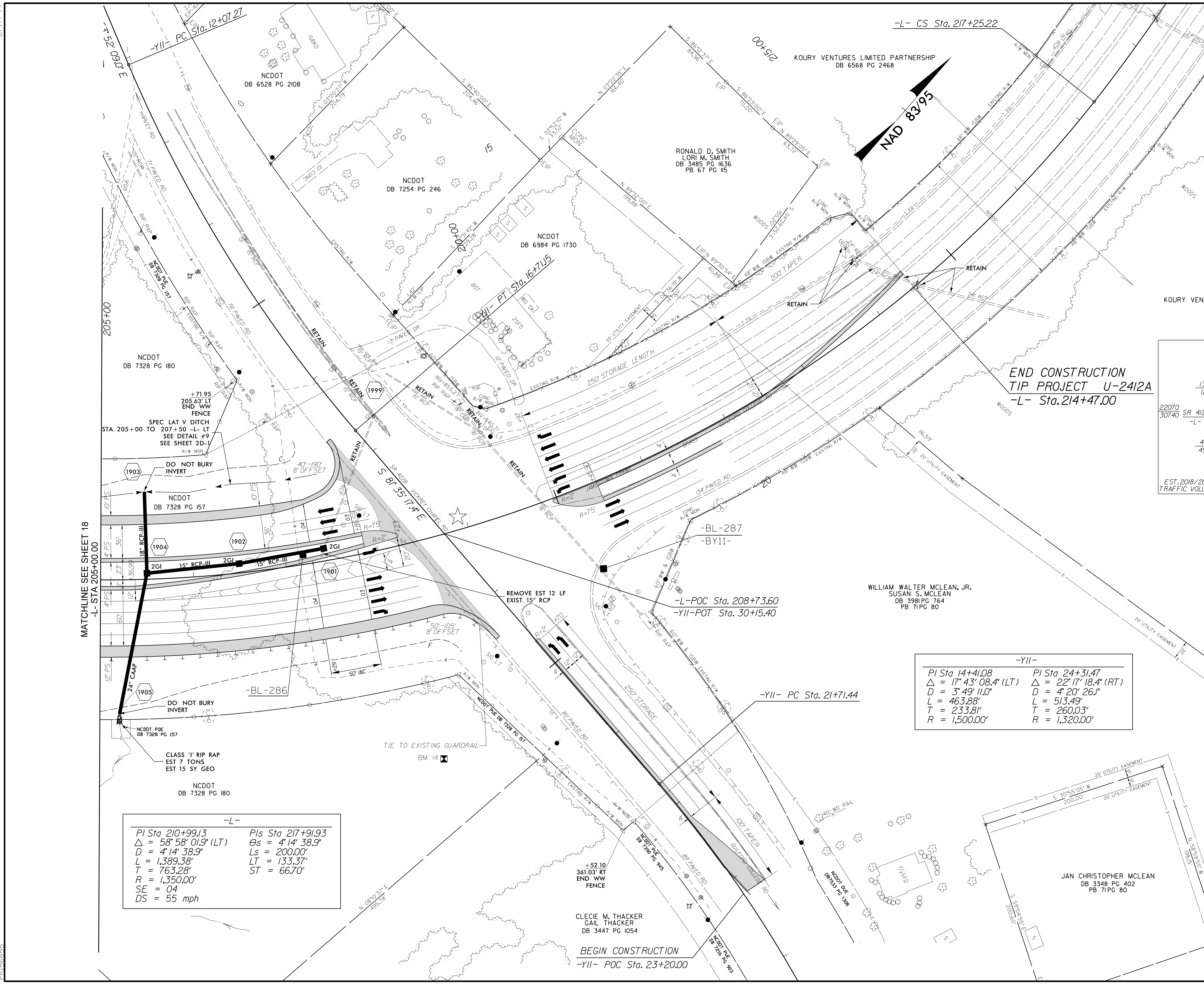
END CONSTRUCTION
TIP PROJECT U-2412A
-L- Sta. 214+47.00

-YII-	
PI Sta 14+41.08 Δ = 17° 43' 08.4" (LT) D = 3' 49' 11.0" L = 463.88' T = 233.81' R = 1,500.00'	PI Sta 24+31.47 Δ = 22° 17' 18.4" (RT) D = 4' 20' 26.1" L = 513.49' T = 260.03' R = 1,320.00'

-L-	
PI Sta 210+99.13 Δ = 58° 58' 01.9" (LT) D = 4' 14' 38.9" L = 1,389.38' T = 763.28' R = 1,350.00' SE = 04 DS = 55 mph	PIs Sta 217+91.93 Os = 4' 14' 38.9" Ls = 200.00' LT = 133.37' ST = 66.70'

MATCHLINE SEE SHEET 18
-L- STA 205+00.00

8/17/19
14:49:13 PM
E:\1\road\paw\paw\1\2412a_r_dj\paw19.dgn
PL:166855



★ EXIST. TRAFFIC SIGNAL
-L- PFL SEE SHEET 31 & 32