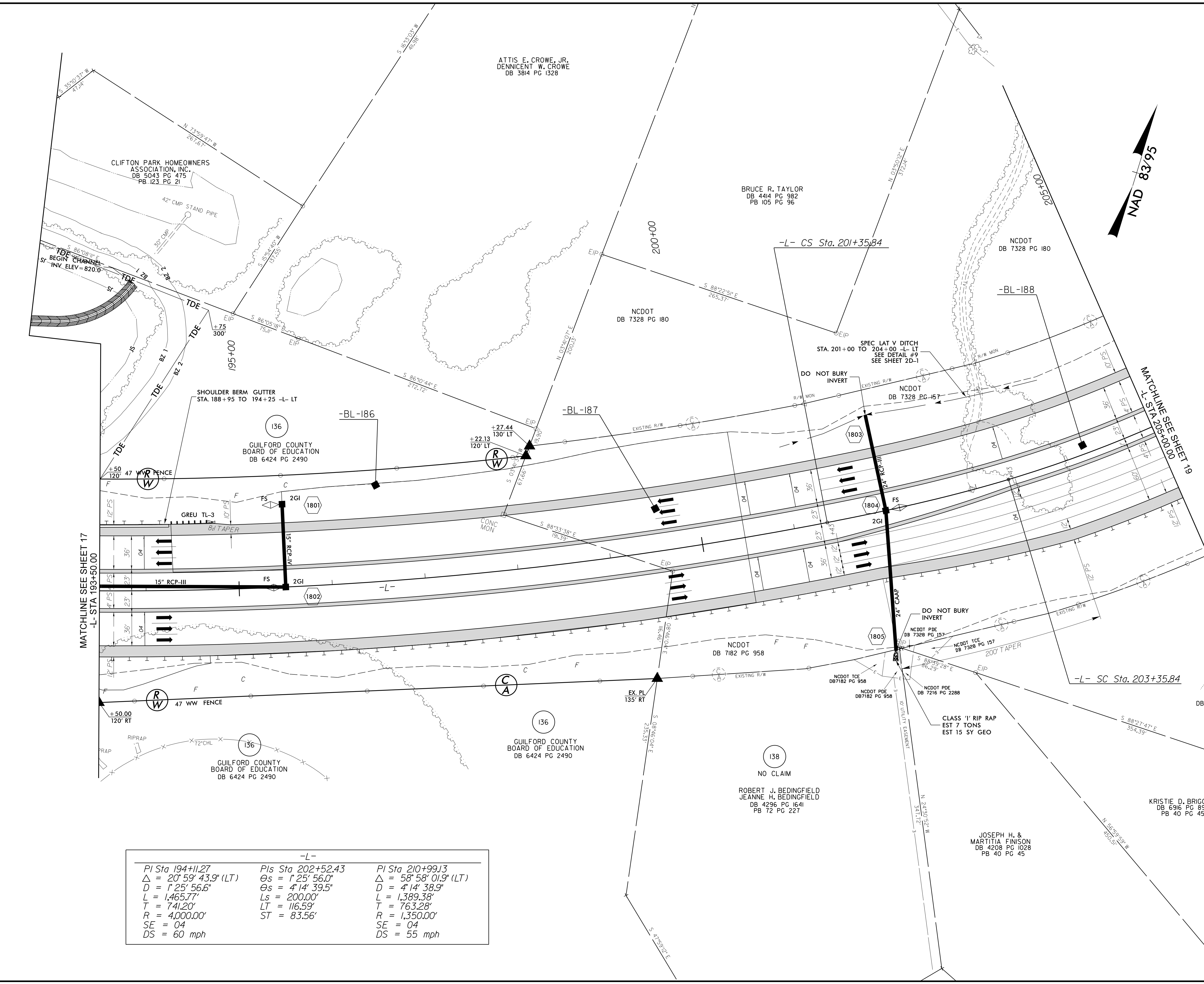


PROJECT REFERENCE NO. U-2412A		SHEET NO. 18	
RW SHEET NO.			
ROADWAY DESIGN ENGINEER		HYDRAULICS ENGINEER	
DOCUMENT NOT CONSIDERED FINAL UNLESS ALL SIGNATURES COMPLETED			
Prepared in the Office of:		M MOTT MACDONALD PO Box 700 Fuquay-Varina, NC 27526 www.mottmac.com/americas LICENSE NO. F-0669	
SUNGATE DESIGN GROUP, P.A. 905 JONES FRANKLIN ROAD RALEIGH, NORTH CAROLINA 27608 TEL: (919) 886-2441 ENG FIRM LICENSE NO. C-890			

8/17/99
 I:\910_P\11\10\roadway\pco\U2412A_rdu_psh18.dgn
 PL:156835



-L-		
PI Sta 194+11.27	PIs Sta 202+52.43	PI Sta 210+99.13
$\Delta = 20^{\circ} 59' 43.9''$ (LT)	$\Theta_s = 1^{\circ} 25' 56.0''$	$\Delta = 58^{\circ} 58' 01.9''$ (LT)
$D = 1^{\circ} 25' 56.6''$	$\Theta_s = 4^{\circ} 14' 39.5''$	$D = 4^{\circ} 14' 38.9''$
$L = 1,465.77'$	$L_s = 200.00'$	$L = 1,389.38'$
$T = 741.20'$	$LT = 116.59'$	$T = 763.28'$
$R = 4,000.00'$	$ST = 83.56'$	$R = 1,350.00'$
$SE = 04$		$SE = 04$
$DS = 60$ mph		$DS = 55$ mph

-L- PFL SEE SHEET 31