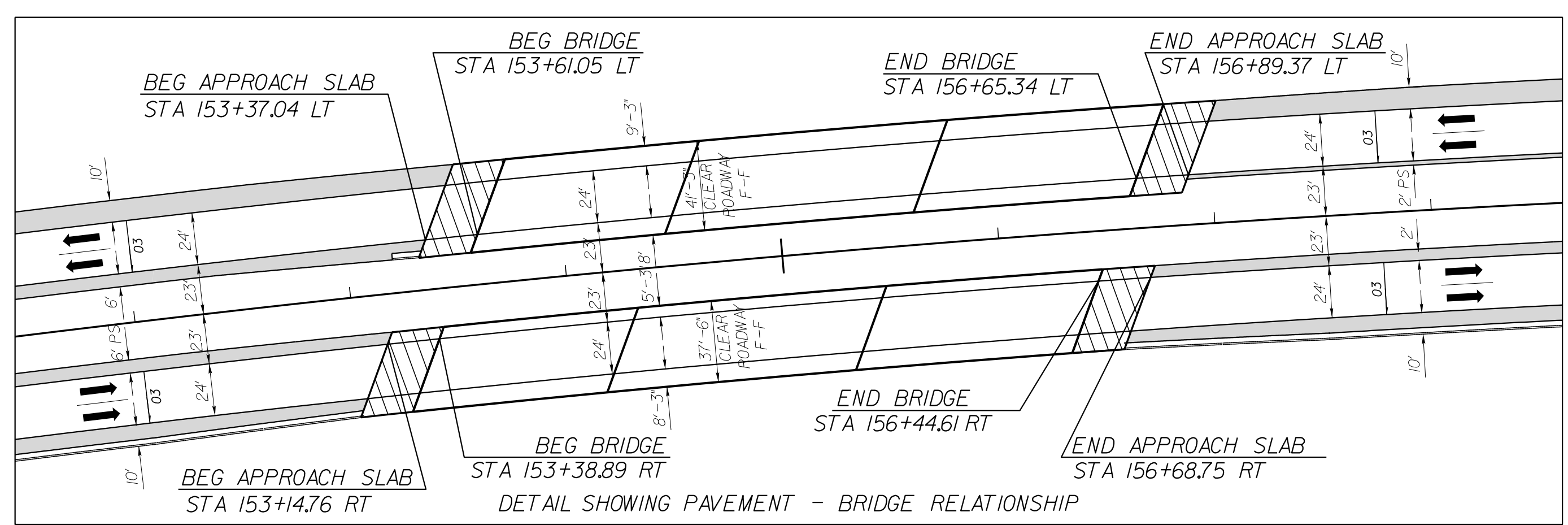
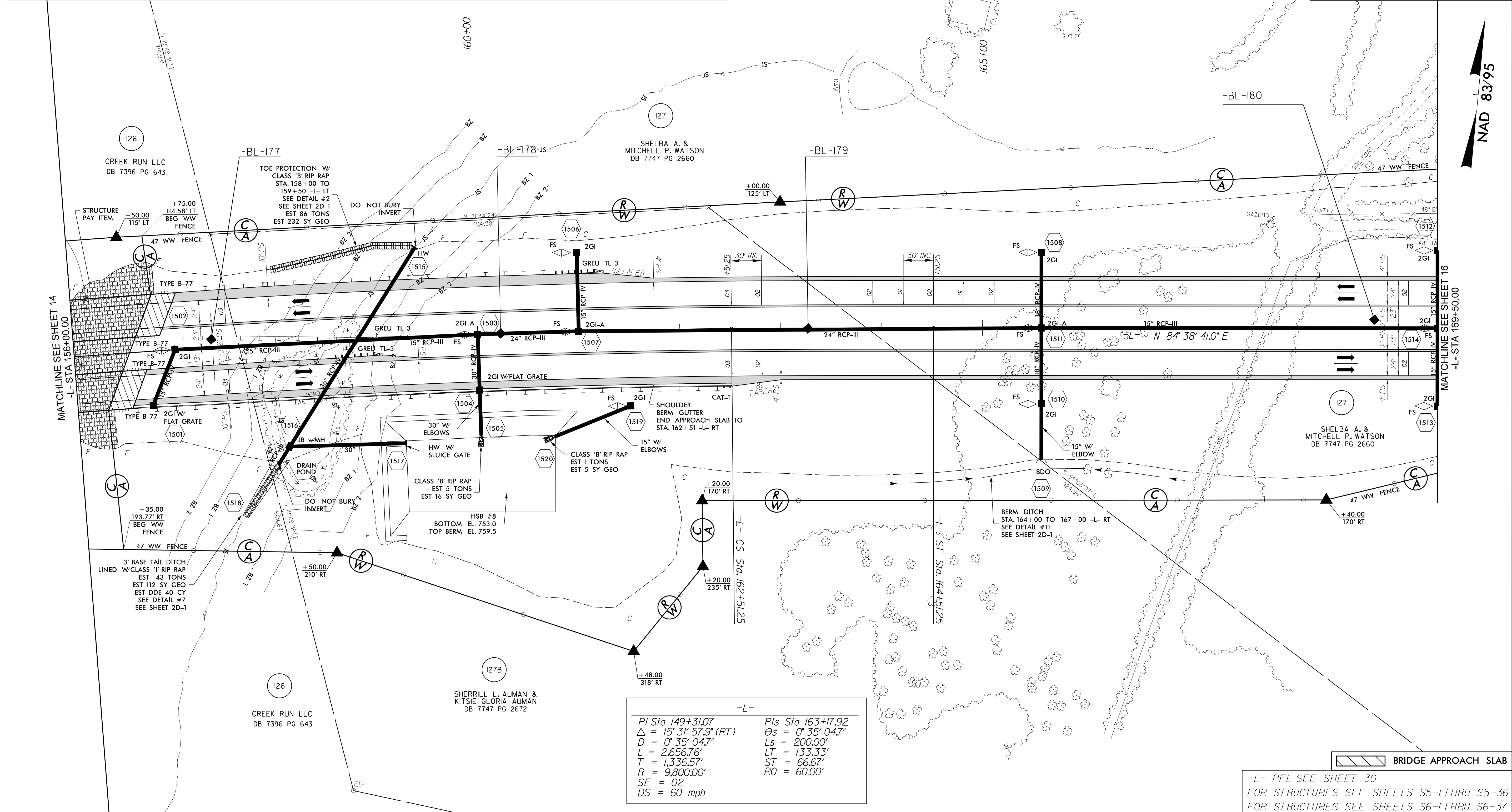


8/17/99



PROJECT REFERENCE NO. U-2412A		SHEET NO. 15	
RW SHEET NO.		HYDRAULICS ENGINEER	
ROADWAY DESIGN ENGINEER		SEAL 27391	
DOCUMENT NOT CONSIDERED FINAL UNLESS ALL SIGNATURES COMPLETED			
Prepared in the Office of:		M PO Box 700 Fuquay-Varina, NC 27526 www.mottmac.com/americas MOTT MACDONALD LICENSE NO. F-0669	
SUNGATE DESIGN GROUP, P.A. 905 JONES FRANKLIN ROAD RALEIGH, NORTH CAROLINA 27608 TEL: (919) 886-2441 ENG FIRM LICENSE NO. C-890			



1:48:59 PM
 I:\6159\shelby\pco\U2412A_r.dwg_psh15a.dgn
 PLT:156835

-L-	
PI Sta 149+31.07	PIs Sta 163+17.92
$\Delta = 15' 31' 57.9''$ (RT)	$\Theta_s = 0' 35' 04.7''$
$D = 0' 35' 04.7''$	$L_s = 200.00'$
$L = 2,656.76'$	$LT = 133.33'$
$T = 1,336.57'$	$ST = 66.67'$
$R = 9,800.00'$	$RO = 60.00'$
$SE = 02$	
$DS = 60$ mph	

BRIDGE APPROACH SLAB

-L- PFL SEE SHEET 30
FOR STRUCTURES SEE SHEETS S5-1 THRU S5-36
FOR STRUCTURES SEE SHEETS S6-1 THRU S6-37