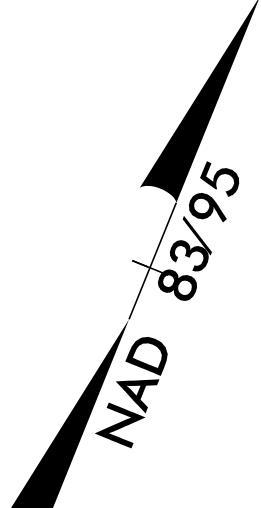
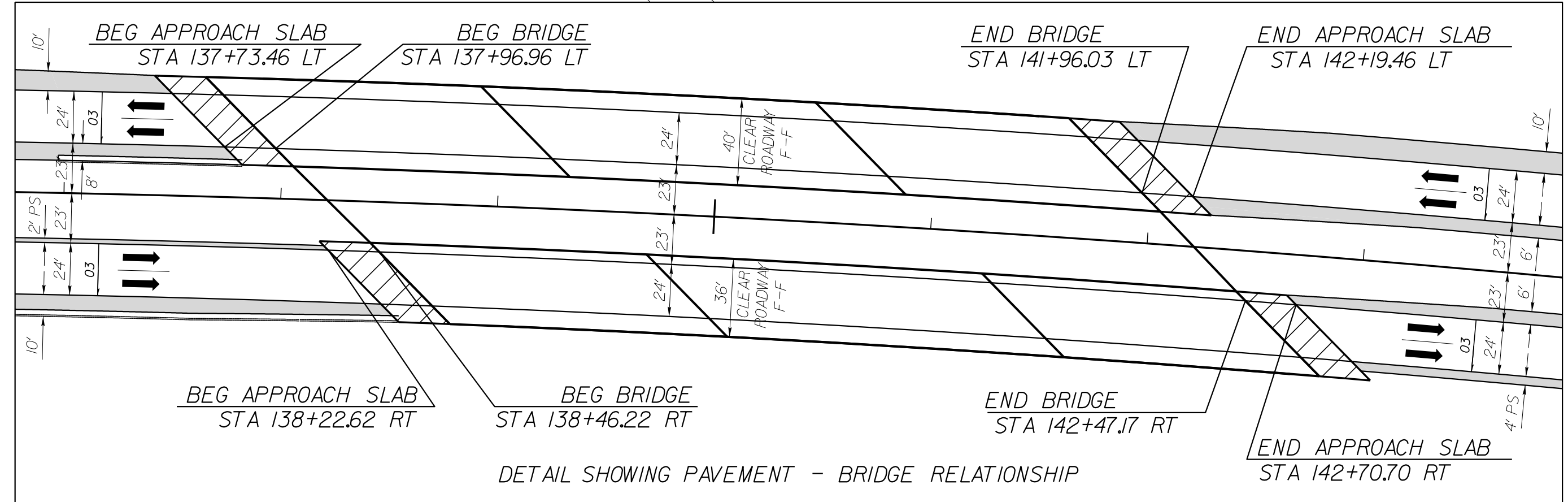
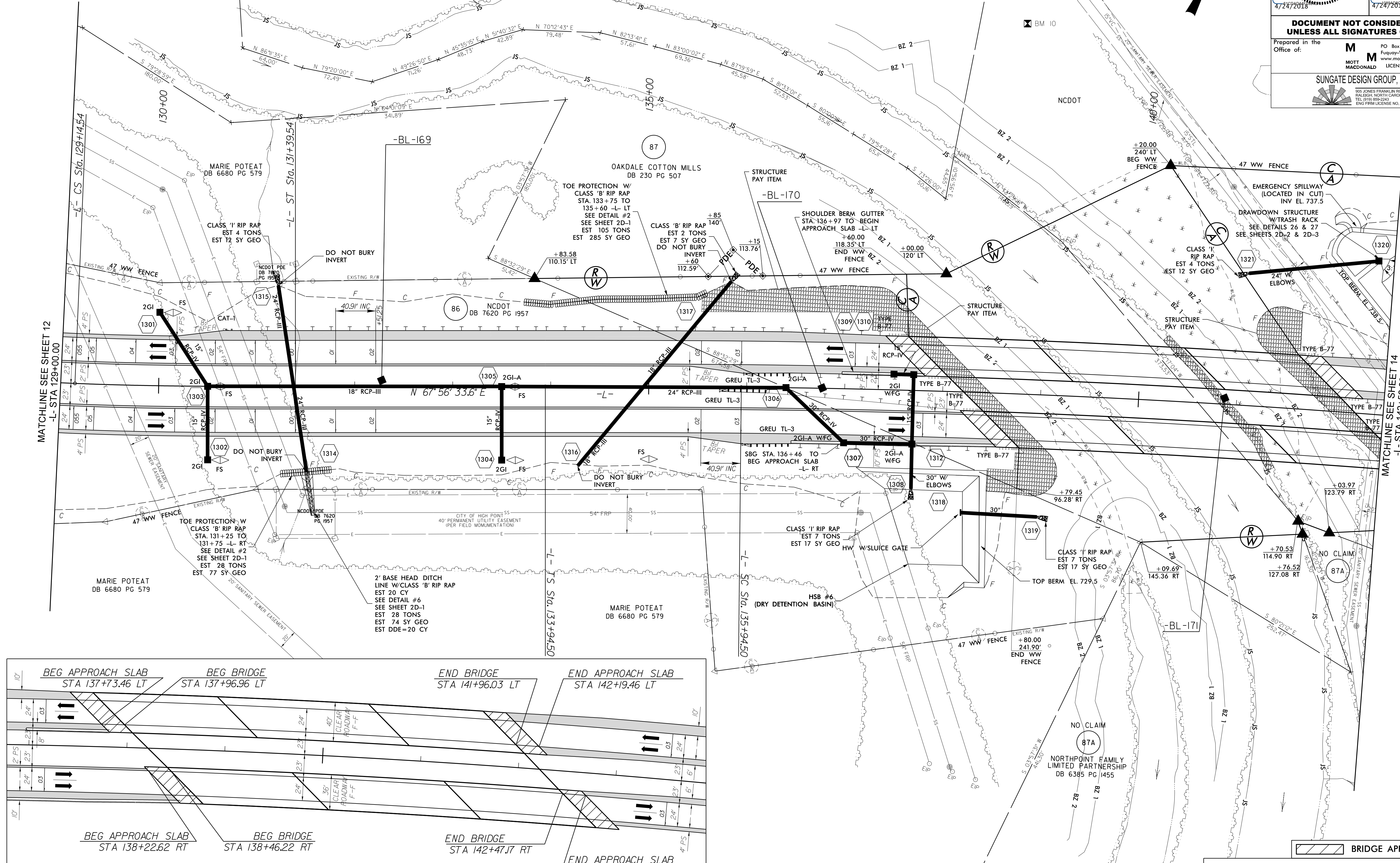


8.17.799

PI Sta 124+81.39 $\Delta = 18^\circ 32' 49.7''$ (LT) $D = 2^\circ 07' 19.4''$ $L = 874.01'$ $T = 440.86'$ $R = 2,700.00'$ $SE = 055$ $DS = 60$ mph	Pls Sta 129+89.55 $\theta_s = 2^\circ 23' 14.4''$ $L_s = 225.00'$ $LT = 150.01'$ $ST = 75.01'$ $RO = 81.82'$	Pls Sta 135+27.83 $\theta_s = 0^\circ 35' 04.7''$ $L_s = 200.00'$ $LT = 133.33'$ $ST = 66.67'$	PI Sta 149+31.07 $\Delta = 15^\circ 31' 57.9''$ (RT) $D = 0^\circ 35' 04.7''$ $L = 2,656.76'$ $T = 1,336.57'$ $R = 9,800.00'$ $SE = 02$ $DS = 60$ mph
---	---	--	--



PROJECT REFERENCE NO. U-2412A	SHEET NO. 13
ROADWAY DESIGN ENGINEER	HYDRAULICS ENGINEER
DOCUMENT NOT CONSIDERED FINAL UNLESS ALL SIGNATURES COMPLETED	
Prepared in the Office of:	
SUNGATE DESIGN GROUP, P.A. <small>905 JONES FRANKLIN ROAD RALEIGH, NORTH CAROLINA 27608 TEL: (919) 886-2441 ENG FIRM LICENSE NO. C-890</small>	



BRIDGE APPROACH SLAB

-L- PFL SEE SHEET 29
 FOR STRUCTURES SEE SHEETS S3-1 THRU S3-45
 FOR STRUCTURES SEE SHEETS S4-1 THRU S4-46

148:51 BY
 148:51 CHECKED
 148:51 DATE
 148:51 PLOT