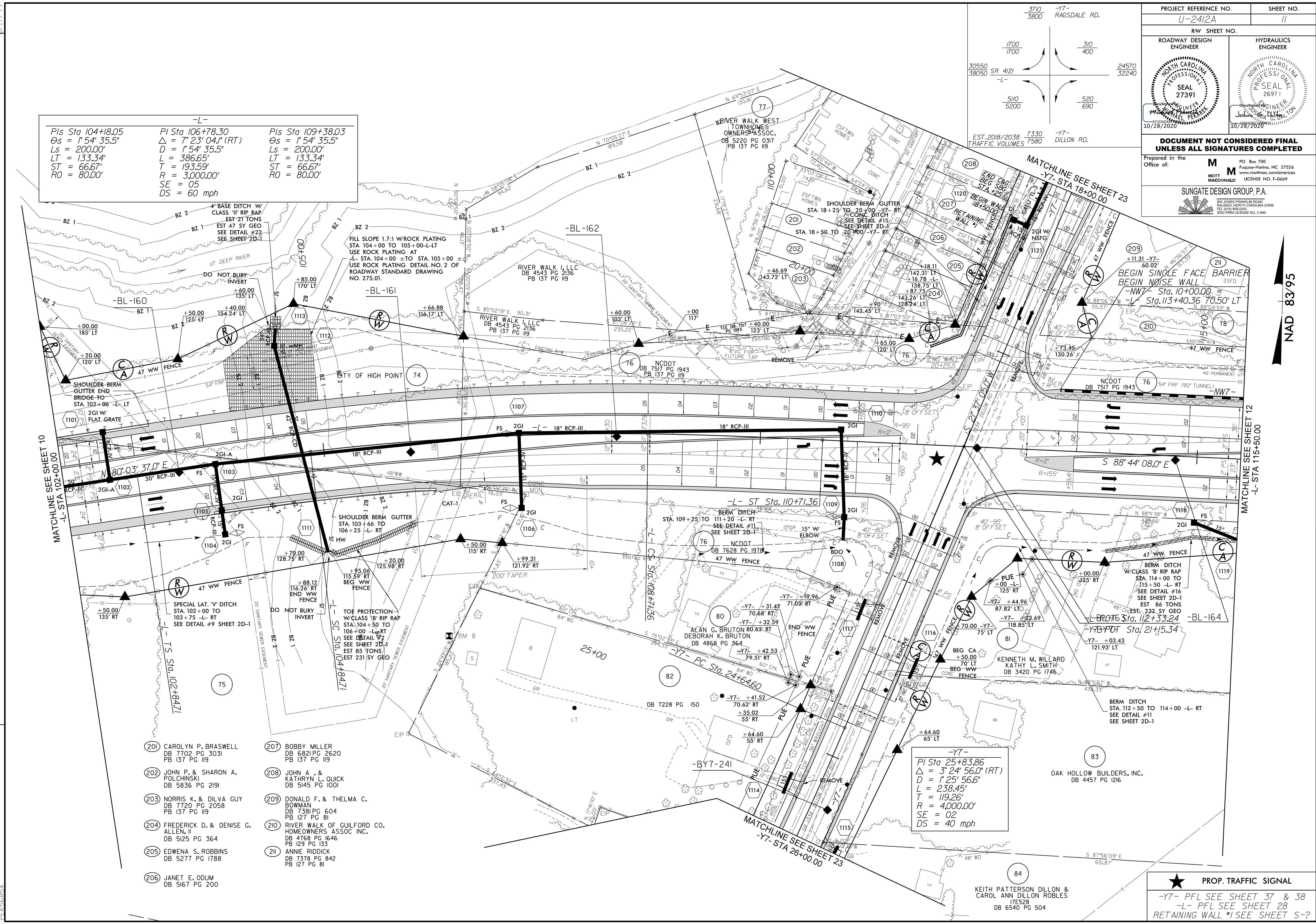
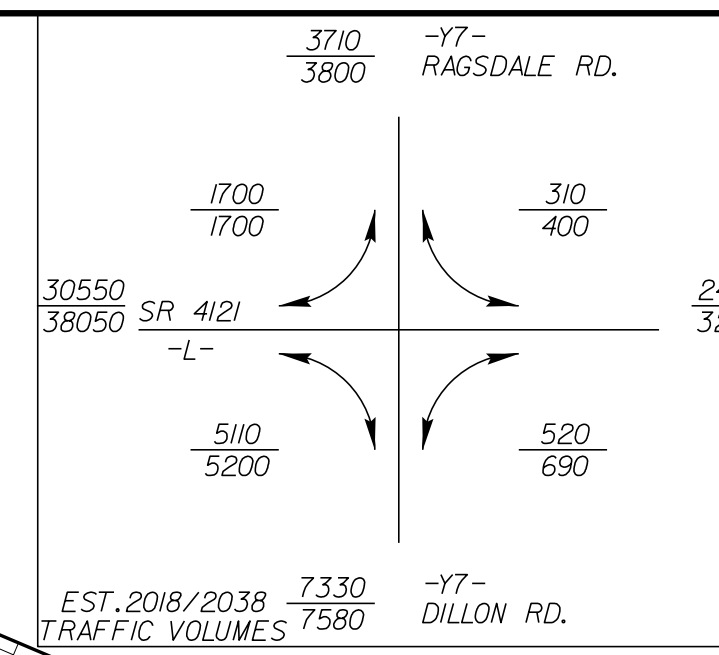


PROJECT REFERENCE NO. U-2412A		SHEET NO. 11	
RW SHEET NO.		HYDRAULICS ENGINEER	
ROADWAY DESIGN ENGINEER		SEAL 27391	
DOCUMENT NOT CONSIDERED FINAL UNLESS ALL SIGNATURES COMPLETED			
Prepared in the Office of:		M PO Box 700 Fuquay-Varina, NC 27526 www.mottmac.com/mottmac MOTT MACDONALD LICENSE NO. F-0669	
SUNGATE DESIGN GROUP, P.A. <small>905 JONES FRANKLIN ROAD RALEIGH, NORTH CAROLINA 27608 TEL: (919) 824-4444 FAX: (919) 824-4444 ENG. FIRM LICENSE NO. C-690</small>			

-L-

<i>Pls Sta 104+18.05</i>	<i>Pl Sta 106+78.30</i>	<i>Pls Sta 109+38.03</i>
$\Delta s = 1' 54" 35.5"$	$\Delta = 7' 23" 04.1" (RT)$	$\Delta s = 1' 54" 35.5"$
$Ls = 200.00'$	$D = 1' 54" 35.5"$	$Ls = 200.00'$
$LT = 133.34'$	$L = 386.65'$	$LT = 133.34'$
$ST = 66.67'$	$T = 193.59'$	$ST = 66.67'$
$RO = 80.00'$	$R = 3,000.00'$	$RO = 80.00'$
	$SE = 05$	
	$DS = 60 \text{ mph}$	



- | | |
|---|--|
| (201) CAROLYN P. BRASWELL
DB 7702 PG 3031
PB 137 PG 119 | (207) BOBBY MILLER
DB 6821 PG 2620
PB 137 PG 119 |
| (202) JOHN P. & SHARON A. POLCHINSKI
DB 5836 PG 2191 | (208) JOHN A. & KATHRYN L. QUICK
DB 5145 PG 1001 |
| (203) NORRIS K. & DILVA GUY
DB 7720 PG 2058
PB 137 PG 119 | (209) DONALD F. & THELMA C. BOWMAN
DB 7381 PG 604
PB 127 PG 81 |
| (204) FREDERICK D. & DENISE G. ALLEN, II
DB 5125 PG 364 | (210) RIVER WALK OF GUILFORD CO. HOMEOWNERS ASSOC INC.
DB 4768 PG 1646
PB 129 PG 133 |
| (205) EDWENA S. ROBBINS
DB 5277 PG 1788 | (211) ANNIE RIDDICK
DB 7378 PG 842
PB 127 PG 81 |
| (206) JANET E. ODUM
DB 5167 PG 200 | |

-Y7-

Pl Sta 25+83.86
 $\Delta = 3' 24" 56.0" (RT)$
 $D = 1' 25" 56.6"$
 $L = 238.45'$
 $T = 119.26'$
 $R = 4,000.00'$
 $SE = 02$
 $DS = 40 \text{ mph}$

★ PROP. TRAFFIC SIGNAL

-Y7- PFL SEE SHEET 37 & 38
 -L- PFL SEE SHEET 28
 RETAINING WALL #1 SEE SHEET S-?

REVISIONS
 R/W REVISED-UPDATED PROPERTY OWNER NAME AND/OR DEED INFORMATION ON PARCEL 84 - MDP - 4/19/18
 CONST.-REVISION: ADDED NOISE WALL-REVISED GUARDRAIL AND REVISED DRAINAGE FROM -L- STA. 113+2.00 TO 125+62.00 LT - PUJ - 10/30/2020

11/27/25 PM
 H:\Projects\U-2412a_r.dwg
 PK-56884