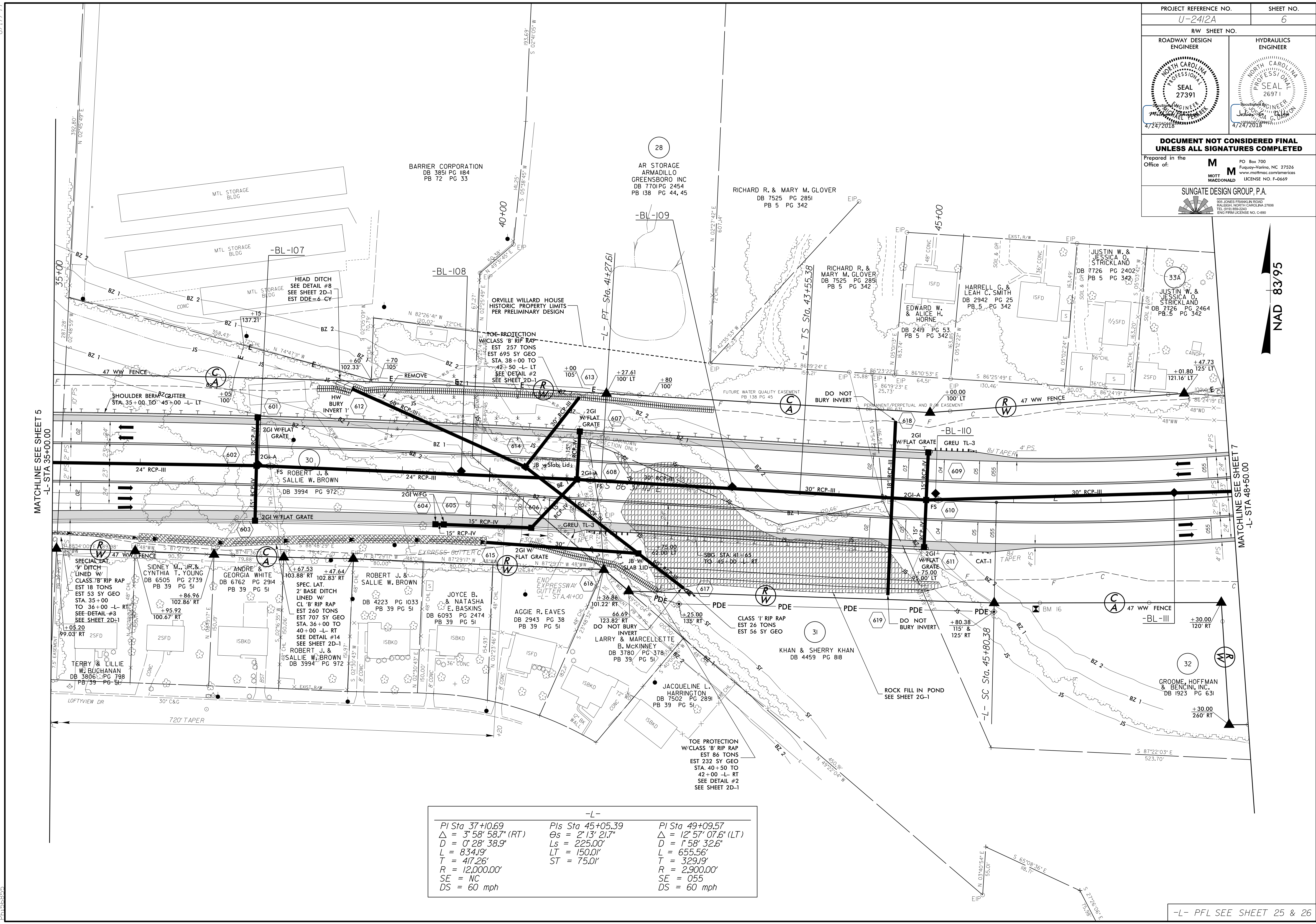


PROJECT REFERENCE NO. U-2412A		SHEET NO. 6	
RW SHEET NO.			
ROADWAY DESIGN ENGINEER		HYDRAULICS ENGINEER	
DOCUMENT NOT CONSIDERED FINAL UNLESS ALL SIGNATURES COMPLETED			
Prepared in the Office of:		M PO Box 700 Fuquay-Varina, NC 27526 www.mottmac.com/americs MOTT MACDONALD LICENSE NO. F-0669	
SUNGATE DESIGN GROUP, P.A. <small>905 JONES FRANKLIN ROAD RALEIGH, NORTH CAROLINA 27608 TEL: (919) 866-2444 ENG FIRM LICENSE NO. C-690</small>			



NAD 83/95

-L-		
PI Sta 37+0.69	PIs Sta 45+05.39	PI Sta 49+09.57
$\Delta = 3' 58' 58.7''$ (RT)	$\Delta = 2' 13' 21.7''$	$\Delta = 12' 57' 07.6''$ (LT)
$D = 0' 28' 38.9''$	$Ls = 225.00'$	$D = 1' 58' 32.6''$
$L = 834.19'$	$LT = 150.01'$	$L = 655.56'$
$T = 417.26'$	$ST = 75.01'$	$T = 329.19'$
$R = 12,000.00'$		$R = 2,900.00'$
$SE = NC$		$SE = 055$
$DS = 60$ mph		$DS = 60$ mph

1:48:25 PM
C:\psh06.dgn
PL166835

-L- PFL SEE SHEET 25 & 26