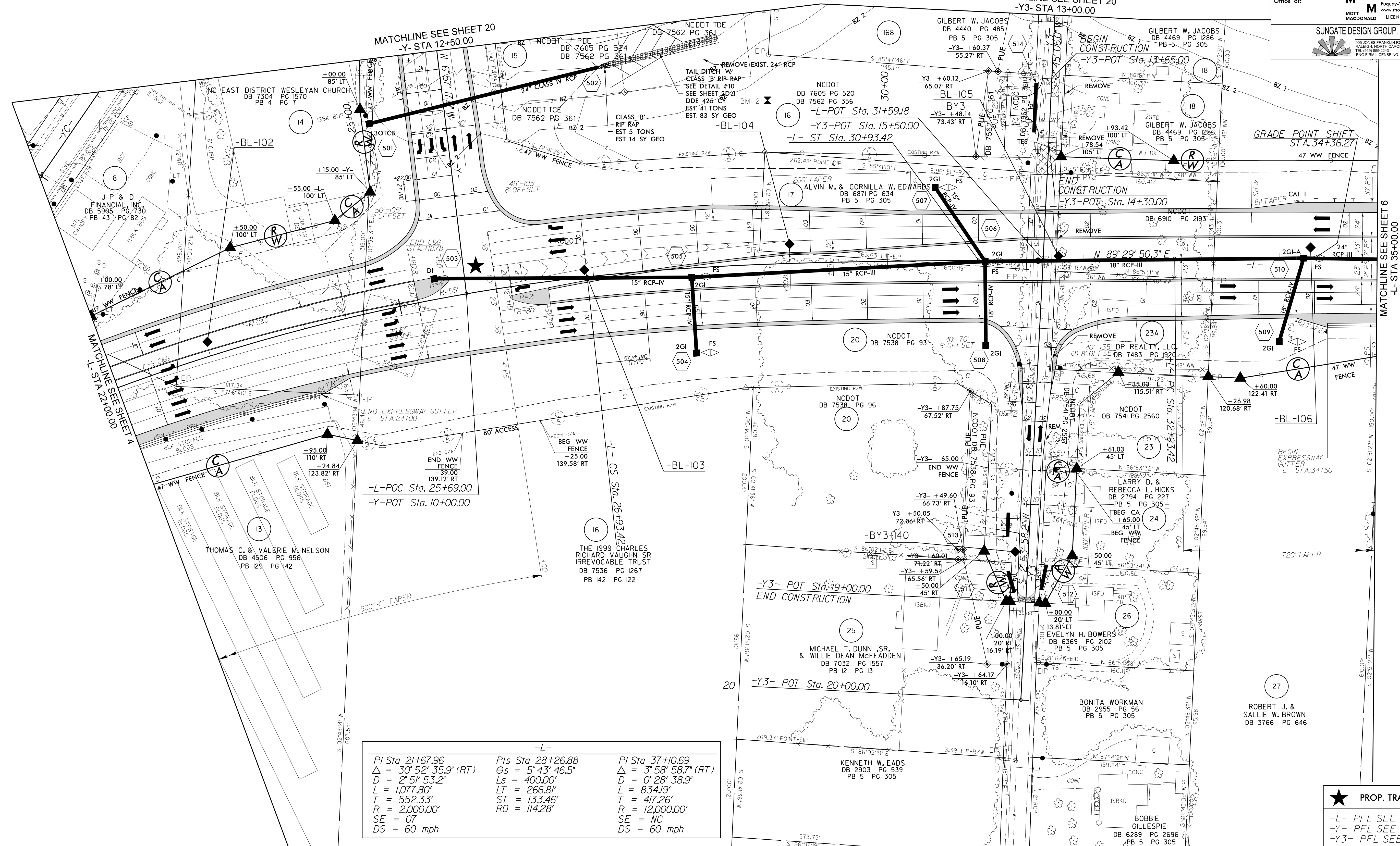
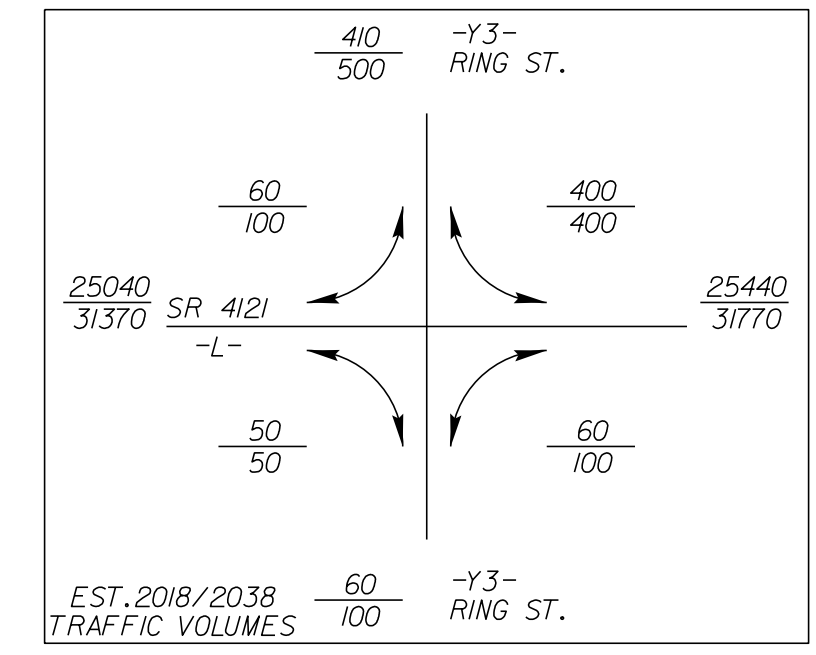
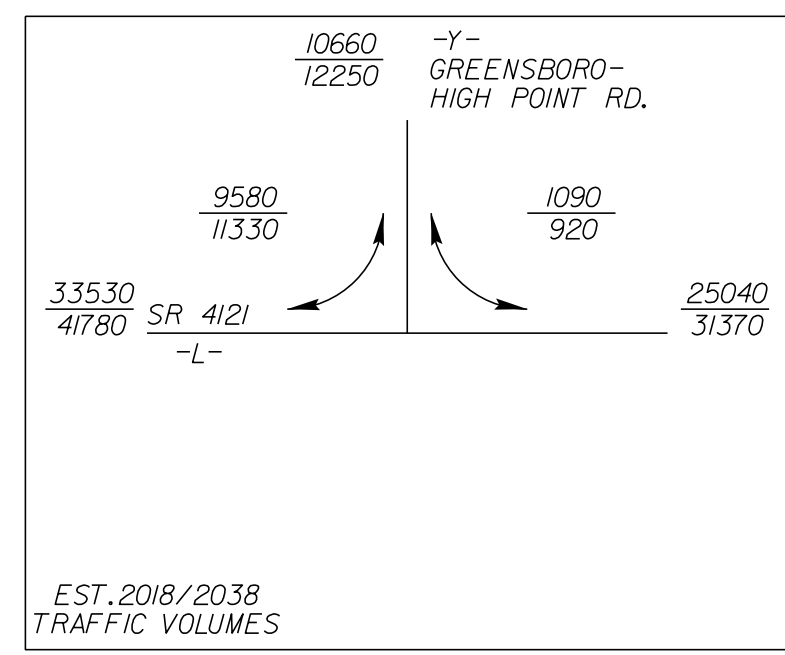


8.17.17.99

PROJECT REFERENCE NO. <b>U-2412A</b>		SHEET NO. <b>5</b>	
ROADWAY DESIGN ENGINEER		HYDRAULICS ENGINEER	
DOCUMENT NOT CONSIDERED FINAL UNLESS ALL SIGNATURES COMPLETED			
Prepared in the Office of:			



NAD 83/95

PI Sta 21+67.96 $\Delta = 30^{\circ} 52' 35.9''$ (RT) $D = 2^{\circ} 51' 53.2''$ $L = 1,077.80'$ $T = 552.33'$ $R = 2,000.00'$ $SE = 07$ $DS = 60$ mph	-L- PI Sta 28+26.88 $\Delta = 5^{\circ} 43' 46.5''$ $Ls = 400.00'$ $LT = 266.81'$ $ST = 133.46'$ $RO = 114.28'$	PI Sta 37+10.69 $\Delta = 3^{\circ} 58' 58.7''$ (RT) $D = 0^{\circ} 28' 38.9''$ $L = 834.19'$ $T = 417.26'$ $R = 12,000.00'$ $SE = NC$ $DS = 60$ mph
---	---	---

★ PROP. TRAFFIC SIGNAL

-L- PFL SEE SHEET 25  
 -Y- PFL SEE SHEET 34  
 -Y3- PFL SEE SHEET 35

1:48:22 PM  
C:\cshou\p\ero\j\2412a\_r.dwg\_rdu\psh05.dgn  
PL166835