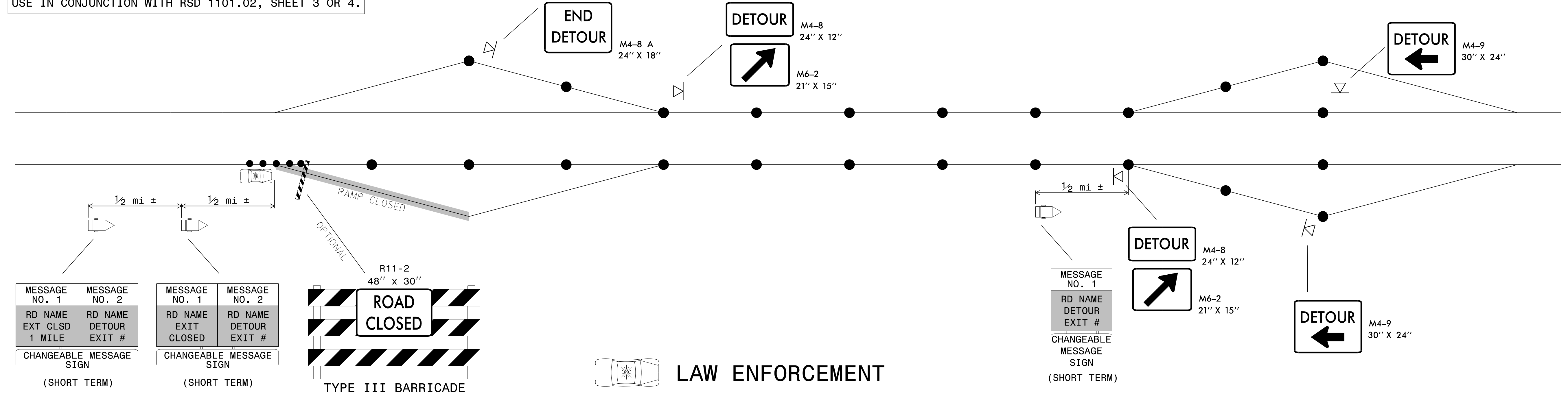
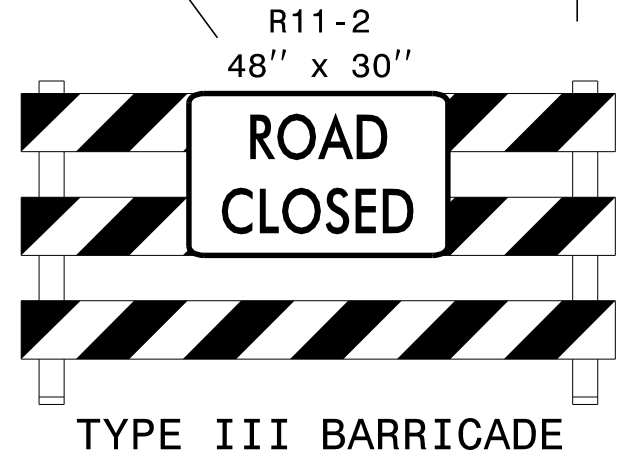


SHORT TERM CLOSURE AND DETOUR OF OFF-RAMP TO ADJACENT INTERCHANGE

USE IN CONJUNCTION WITH RSD 1101.02, SHEET 3 OR 4.



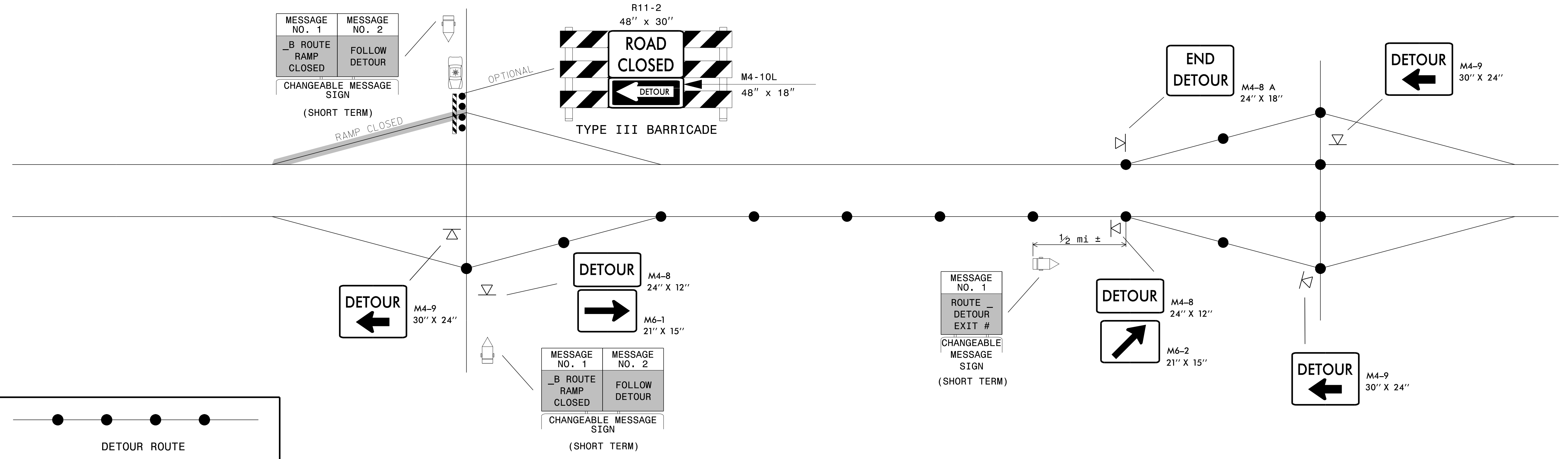
MESSAGE NO. 1	MESSAGE NO. 2	MESSAGE NO. 1	MESSAGE NO. 2
RD NAME	RD NAME	RD NAME	RD NAME
EXT CLSD	DETOUR	EXIT CLOSED	DETOUR
1 MILE	EXIT #		EXIT #
CHANGEABLE MESSAGE SIGN		CHANGEABLE MESSAGE SIGN	
(SHORT TERM)		(SHORT TERM)	



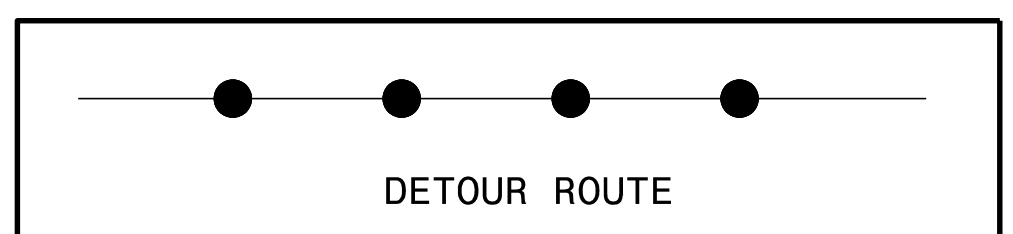
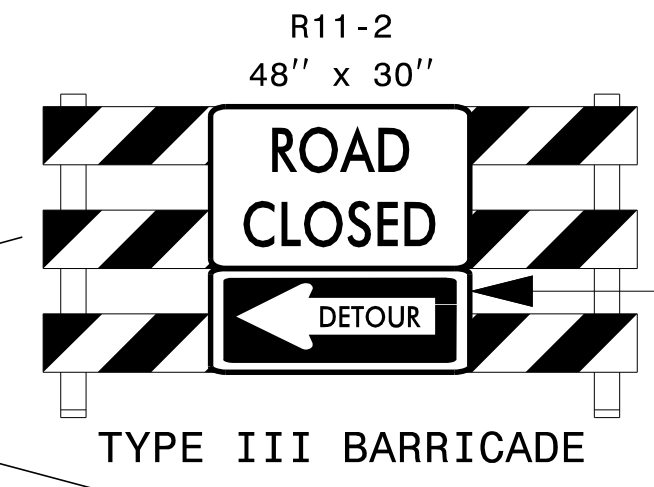
MESSAGE NO. 1
RD NAME
DETOUR
EXIT #
CHANGEABLE MESSAGE SIGN
(SHORT TERM)

SHORT TERM CLOSURE AND DETOUR OF ON-RAMP TO ADJACENT INTERCHANGE

USE IN CONJUNCTION WITH RSD 1101.02, SHEET 3 OR 4.



MESSAGE NO. 1	MESSAGE NO. 2
_B ROUTE	FOLLOW
RAMP	DETOUR
CLOSED	
CHANGEABLE MESSAGE SIGN	
(SHORT TERM)	



MESSAGE NO. 1	MESSAGE NO. 2
_B ROUTE	FOLLOW
RAMP	DETOUR
CLOSED	
CHANGEABLE MESSAGE SIGN	
(SHORT TERM)	

GENERAL NOTES:

1. THIS DRAWING IS INTENDED FOR USE DURING SHORT TERM CLOSURES OF INTERSTATE AND FREEWAY RAMPS.
2. RAMP CLOSURES SHALL BE APPROVED BY THE ENGINEER.
3. IF RAMP CLOSURE RESTRICTIONS APPLY, SEE SPECIAL PROVISION, "INTERMEDIATE CONTRACT TIMES AND LIQUIDATED DAMAGES".
4. ADDITIONAL CHANGEABLE MESSAGE SIGNS AND POSSIBLE DETOUR SIGNS MAY BE NECESSARY FOR MORE COMPLEX CLOSURES/DETOURS. COMPENSATION FOR ADDITIONAL DEVICES SHALL BE MADE BASED ON THE UNIT BID PRICE FOR THE RESPECTIVE DEVICE.

APPROVED: *Steve Kite*
DATE: 2/23/2017

DocuSigned by:
Steve Kite
E27CE30E10FC442...

DOCUMENT NOT CONSIDERED FINAL
UNLESS ALL SIGNATURES COMPLETED



SHORT TERM CLOSURE
AND DETOUR OF
INTERSTATE/FREEWAY
RAMPS

2/23/2017 S:\TMU\WZTC\DesignGroup3\Squad3B\0Data\Interstate Resurfacing Provisions and Details\TypicalOff-Ramp Detour.dgn User:keddis