

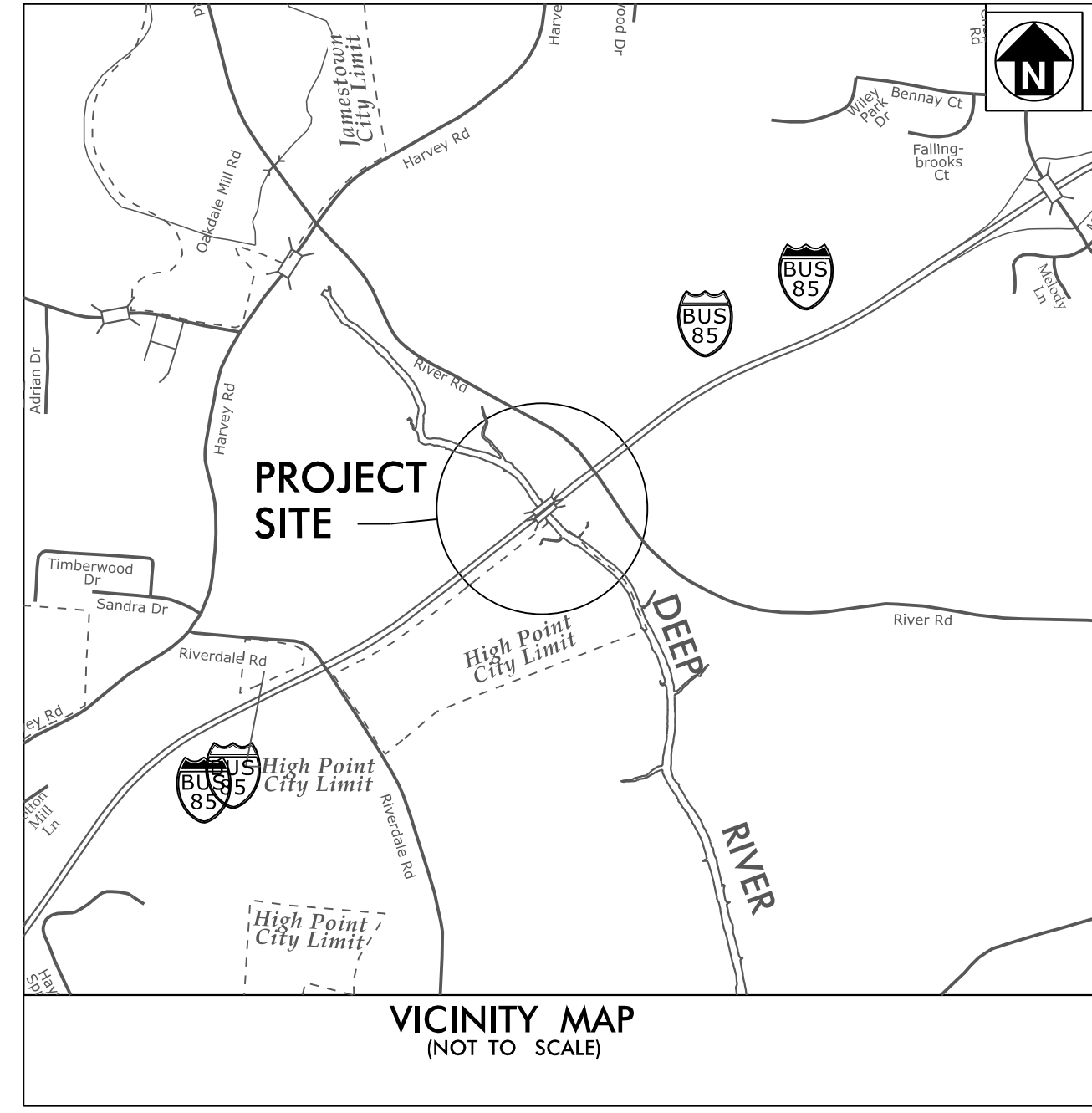
**This electronic collection of documents is provided
for the convenience of the user
and is Not a Certified Document –**

**The documents contained herein were originally issued
and sealed by the individuals whose names and license
numbers appear on each page, on the dates appearing
with their signature on that page.**

**This file or an individual page
shall not be considered a certified document.**

09.08/99

TIP PROJECT: B-5351



STATE OF NORTH CAROLINA
DIVISION OF HIGHWAYS

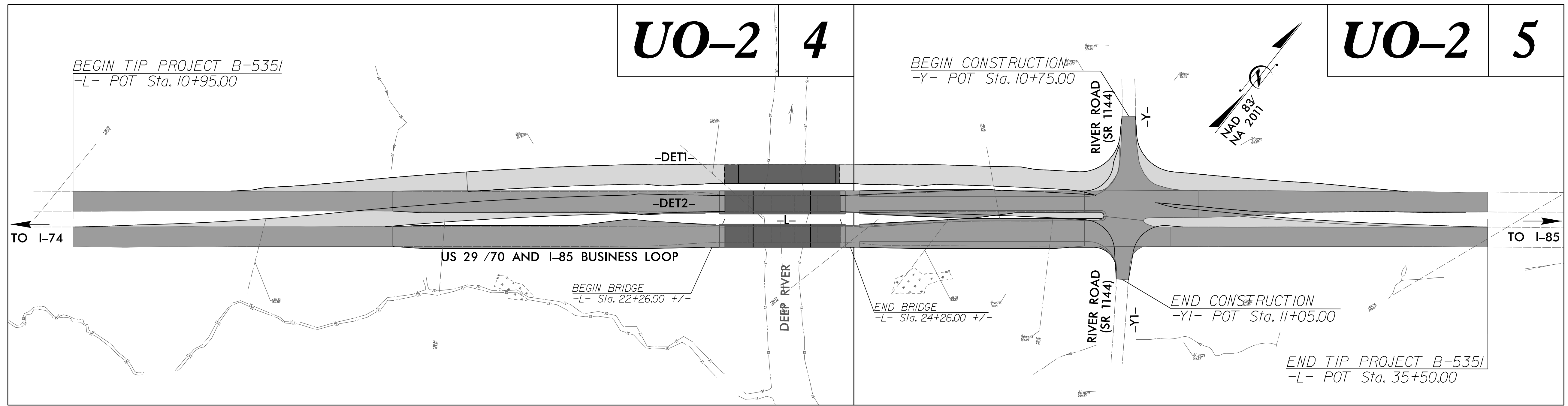
**UTILITIES BY OTHERS PLANS
GUILFORD COUNTY**

**LOCATION: REPLACE BRIDGE NO. 242 AND BRIDGE NO. 237 OVER DEEP RIVER
IN HIGH POINT ON US 29 /70 /I-85 BUSINESS**

TYPE OF WORK: POWER & TELEPHONE RELOCATION

T.I.P. NO.	SHEET NO.
B-5351	UO-1

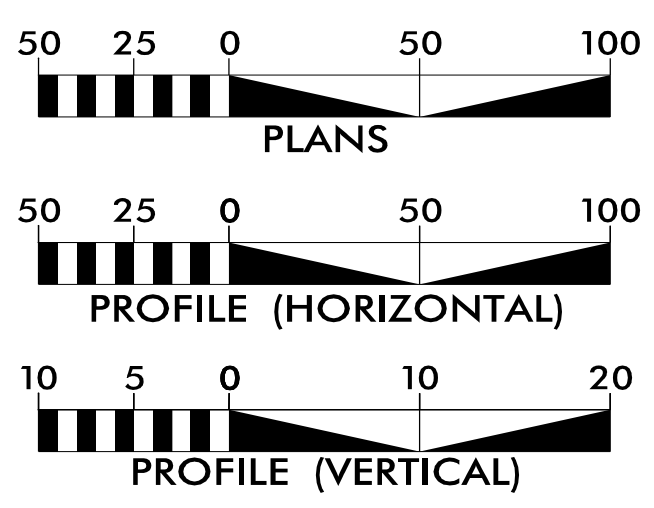
NOTE:
ALL UTILITY WORK SHOWN ON THIS SHEET IS DONE BY OTHERS.
NO PAYMENT WILL BE MADE TO THE CONTRACTOR FOR UTILITY WORK SHOWN ON THIS SHEET.



THIS PROJECT IS NOT WITHIN ANY MUNICIPAL BOUNDARIES.

CLEARING ON THIS PROJECT SHALL BE PERFORMED TO THE LIMITS ESTABLISHED BY METHOD _____

GRAPHIC SCALES



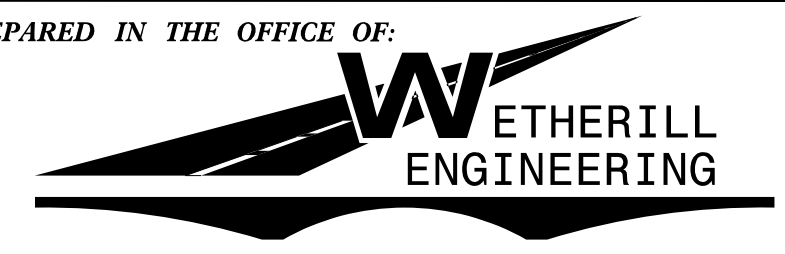
INDEX OF SHEETS

SHEET NO.:	DESCRIPTION:
UO-1	TITLE SHEET
UO-2 THRU UO-3	UBO PLAN SHEETS

UTILITY OWNERS WITH CONFLICTS

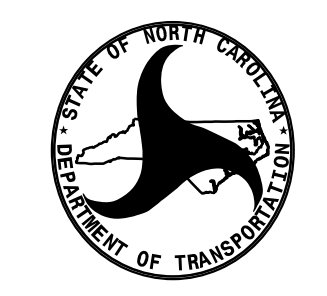
- (A) POWER - DUKE ENERGY
- (B) TELEPHONE - NORTH STATE COMMUNICATIONS

PREPARED IN THE OFFICE OF:



1223 Jones Franklin Rd. Raleigh, N.C. 27606
License No. F-0377
Bus: 919.851.8077 Fax: 919.851.8107

John D. Schriener, PLS UTILITY PROJECT MANAGER
John D. Schriener, PLS PROJECT UTILITY COORDINATOR



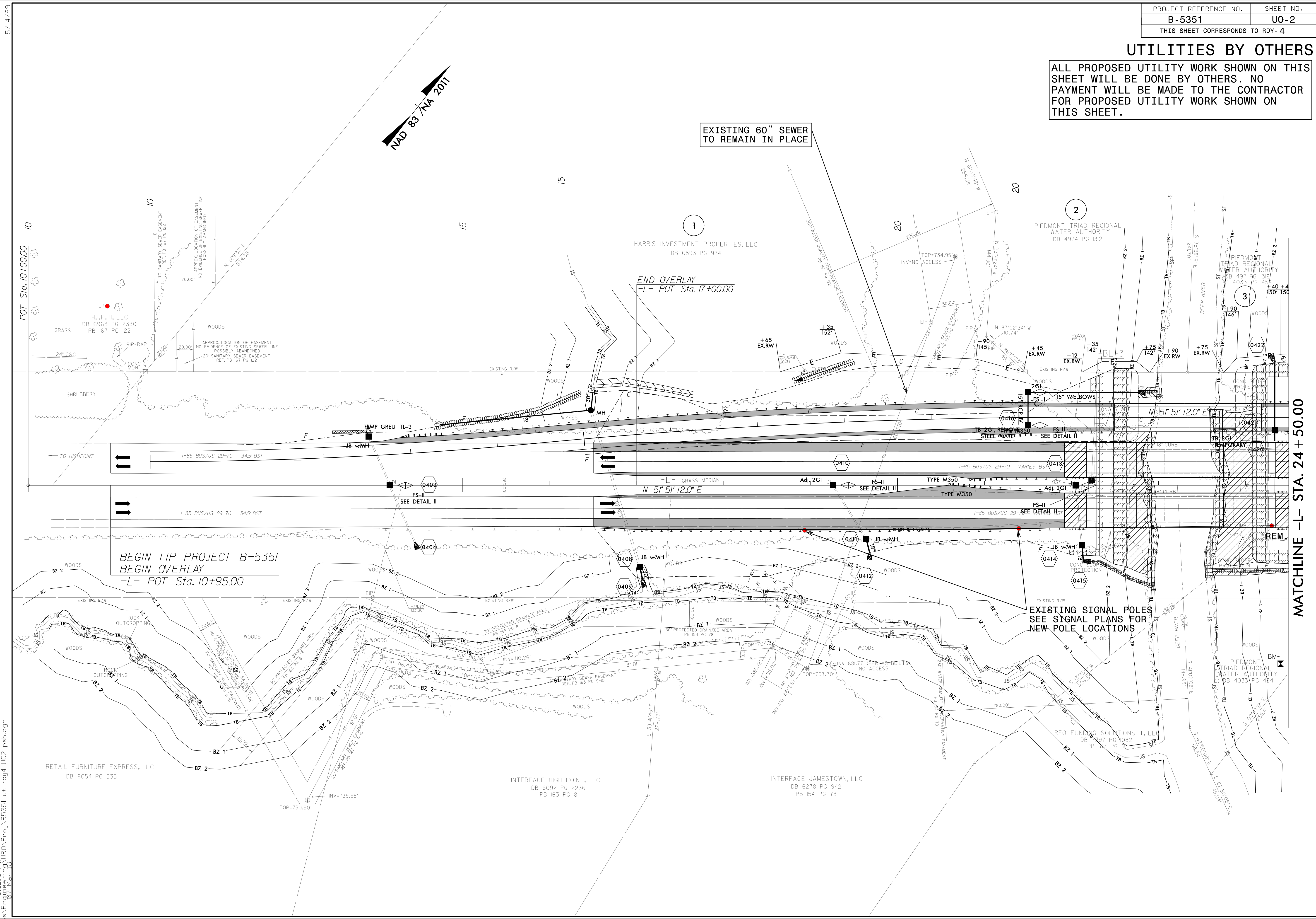
DIVISION OF HIGHWAYS
UTILITIES UNIT
1555 MAIL SERVICES CENTER
RALEIGH, NC 27699-1555
PHONE (919) 707-6690
FAX (919) 250-4151

Donna Jackson, PE CENTRAL UTILITIES MANAGER
Ali Kouchehi, PE SENIOR PROJECT ENGINEER
Kyle Pleasant UTILITIES AREA COORDINATOR
Tanga Sampson SENIOR UTILITIES COORDINATOR

\$\$\$\$\$ SYSTEM \$\$\$\$\$\$
\$\$\$\$\$ DOWN \$\$\$\$\$\$
\$\$\$\$\$ USERNAME \$\$\$\$\$\$

UTILITIES BY OTHERS

ALL PROPOSED UTILITY WORK SHOWN ON THIS SHEET WILL BE DONE BY OTHERS. NO PAYMENT WILL BE MADE TO THE CONTRACTOR FOR PROPOSED UTILITY WORK SHOWN ON THIS SHEET.



EXISTING 60" SEWER TO REMAIN IN PLACE

HARRIS INVESTMENT PROPERTIES, LLC
DB 6593 PG 974

END OVERLAY
-L- POT Sta. 17+00.00

BEGIN TIP PROJECT B-5351
BEGIN OVERLAY
-L- POT Sta. 10+95.00

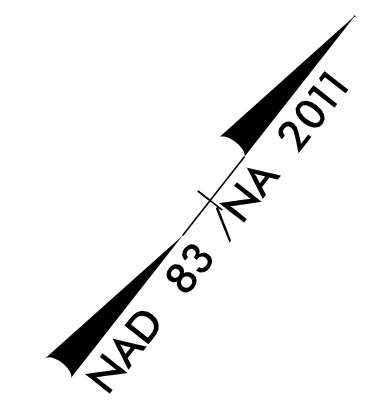
EXISTING SIGNAL POLES
SEE SIGNAL PLANS FOR
NEW POLE LOCATIONS

MATCHLINE -L- STA. 24+50.00

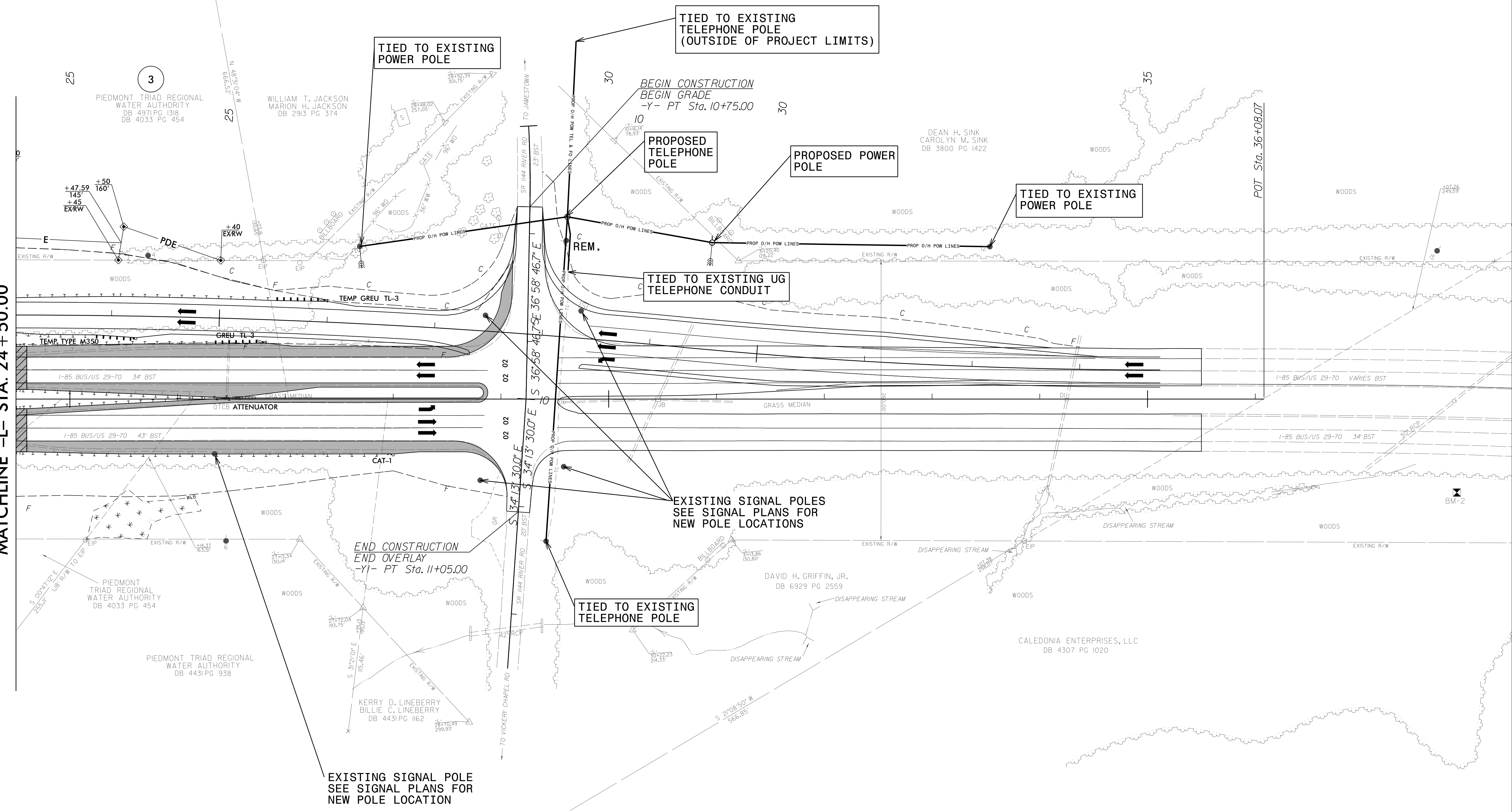
5/14/99
 3:32:13 PM \\UBD\Proj\B5351\ut_rdy4_U02.psh.dgn

UTILITIES BY OTHERS

ALL PROPOSED UTILITY WORK SHOWN ON THIS SHEET WILL BE DONE BY OTHERS. NO PAYMENT WILL BE MADE TO THE CONTRACTOR FOR PROPOSED UTILITY WORK SHOWN ON THIS SHEET.



MATCHLINE -L- STA. 24 + 50.00



5/14/99

3:23:36 PM J:\BDD\Proj\B5351\ut_rdy5_U03.psh.dgn