

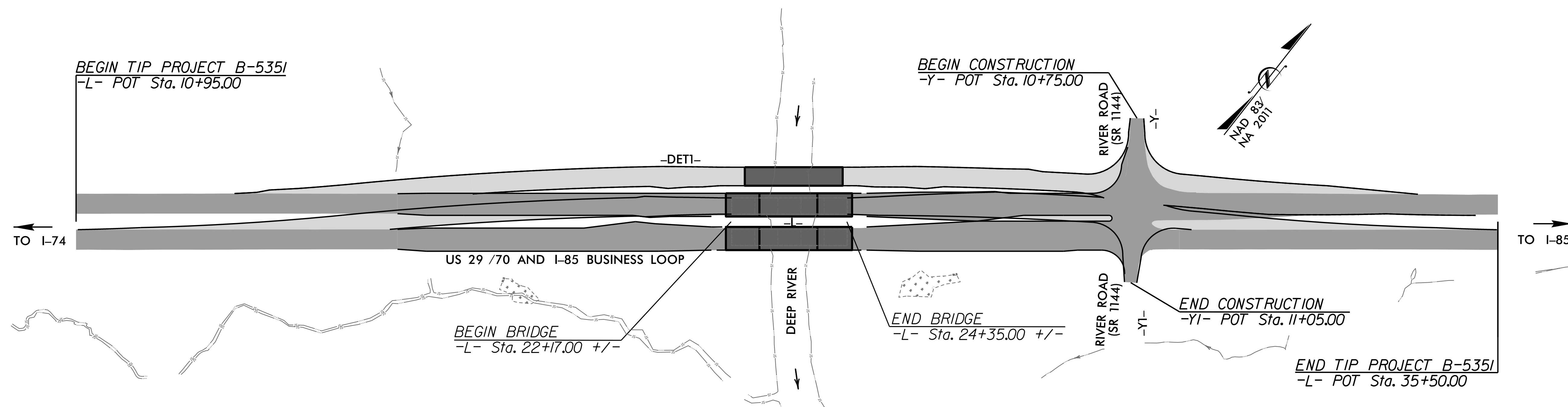
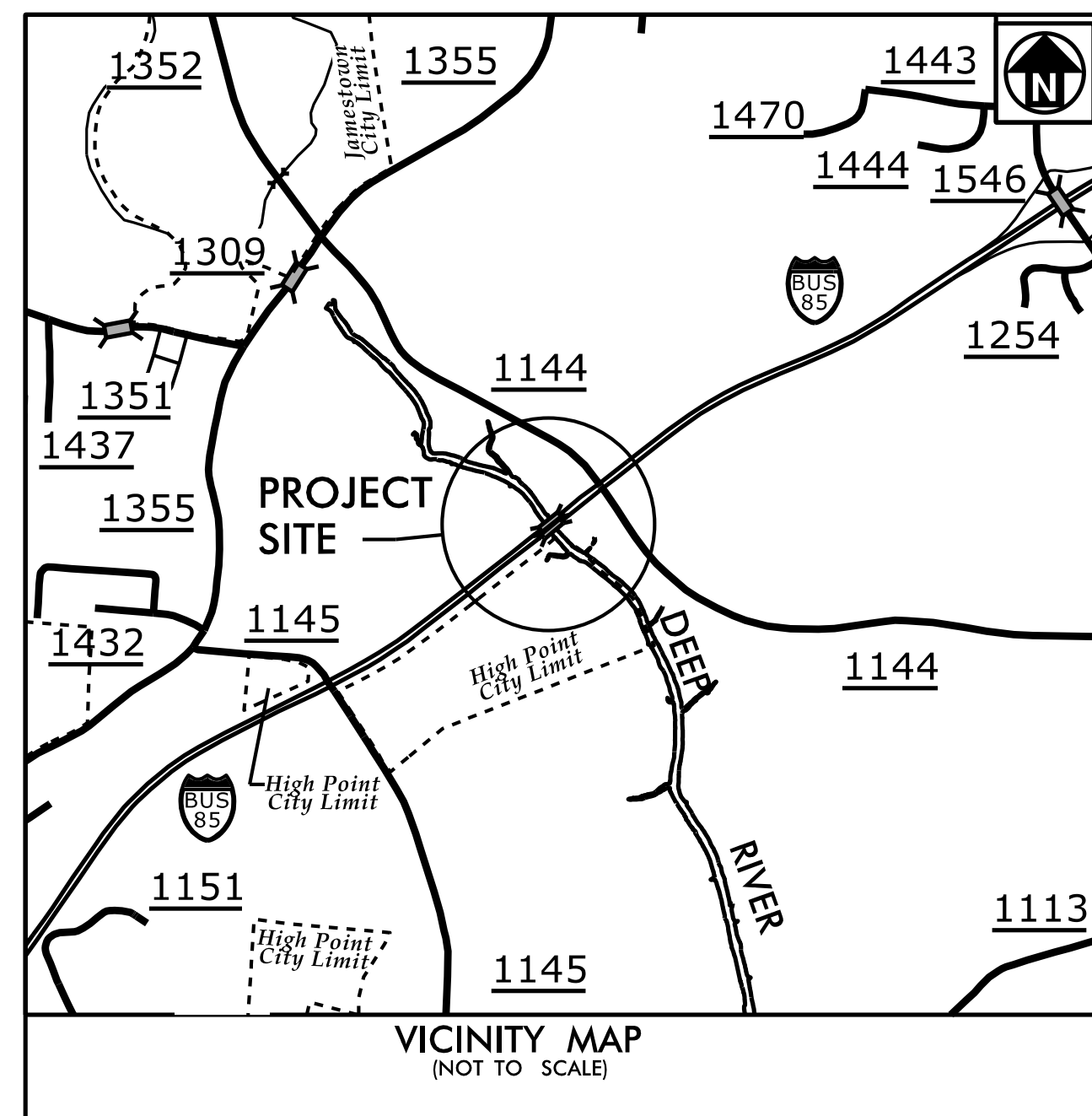
STATE	STATE PROJECT REFERENCE NO.	SHEET NO.	TOTAL SHEETS
N.C.	B-5351	1	
STATE PROJ. NO.	F.A. PROJ. NO.	DESCRIPTION	
46065.1.1		PE	

STATE OF NORTH CAROLINA
DIVISION OF HIGHWAYS

GUILFORD COUNTY

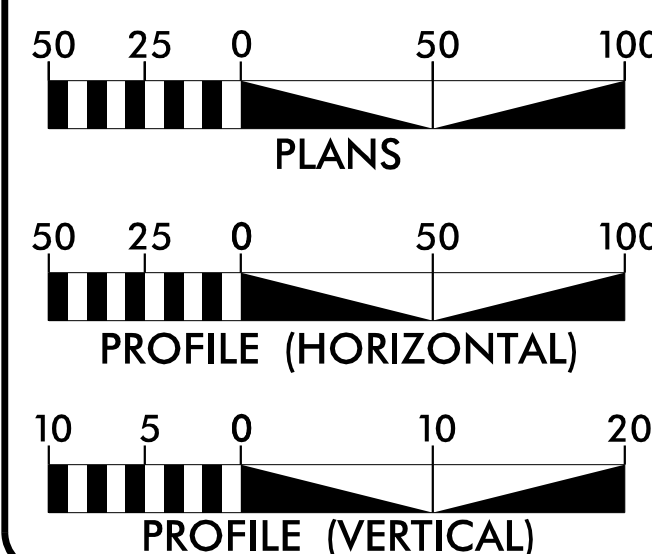
**LOCATION: REPLACE BRIDGE NO. 242 AND BRIDGE NO. 237 OVER DEEP RIVER
IN HIGH POINT ON US 29 /70 /I-85 BUSINESS**

TYPE OF WORK: GRADING, PAVING, DRAINAGE, AND STRUCTURE



STRUCTURES

GRAPHIC SCALES



DESIGN DATA

ADT 2018 = 34,500
ADT 2038 = 42,900
K = 10 %
D = 55 %
T = 8 % *
V = 60 MPH
* (TTST = 3% + DUAL 5%)
FUNC CLASS = MAJOR ARTERIAL REGIONAL TIER

PROJECT LENGTH

LENGTH ROADWAY TIP PROJECT B-5351 = 0.424 MILES
LENGTH STRUCTURE TIP PROJECT B-5351 = 0.041 MILES
TOTAL LENGTH OF TIP PROJECT B-5351 = 0.465 MILES

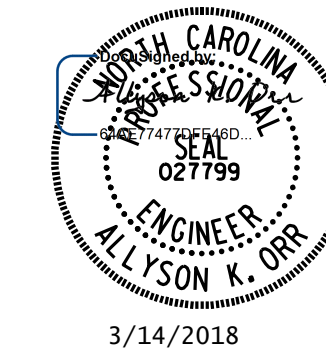
PLANS PREPARED FOR THE NCDOT BY:
MI ENGINEERING
1011 SCHAUB DRIVE, SUITE 100
RALEIGH, NC 27606
(919) 851-6606
FIRM PE NUMBER : P-0671

2018 STANDARD SPECIFICATIONS

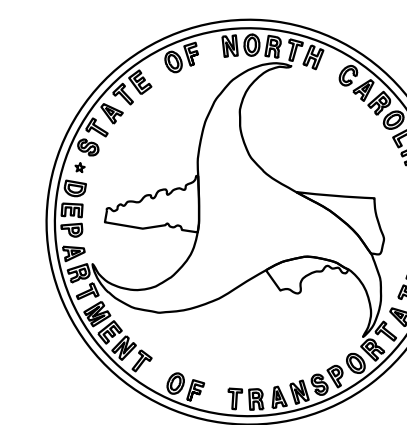
RIGHT OF WAY DATE:
OCTOBER 20, 2017

LETTING DATE:
JUNE 19, 2018

MORRIS ISRAELNAIM, PE
PROJECT ENGINEER
PE# ENGINEER
ALLYSON K. ORR, PE
PROJECT DESIGN ENGINEER
PE# ENGINEER
DAVID STUTTS, PE
NCDOT CONTACT



3/14/2018



TIP PROJECT: B-5351

CONTRACT: C204100

3/14/2018 8:14:29 AM Planning Filename: P:\NC_Bridges\M16001.35 - B-5351 Guilford Co\B-5351\Structures\499-001-B5351-SMU-TSH.dgn