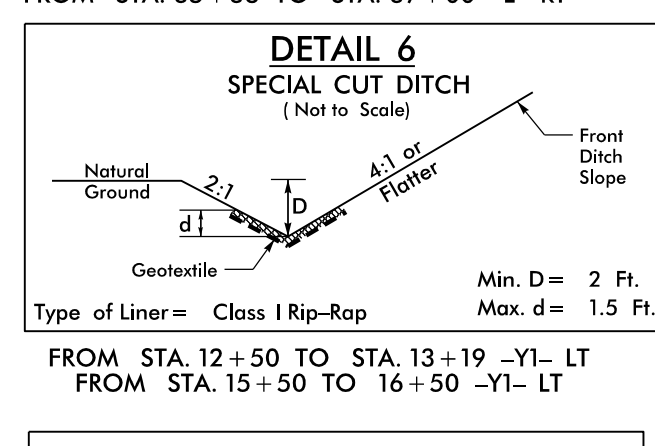
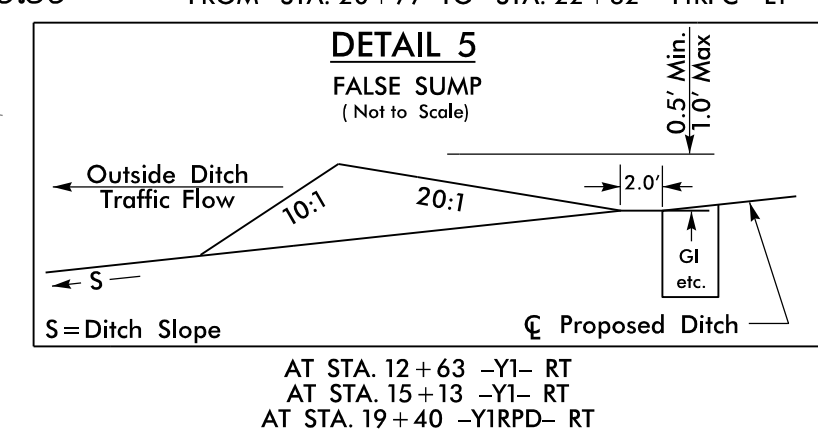
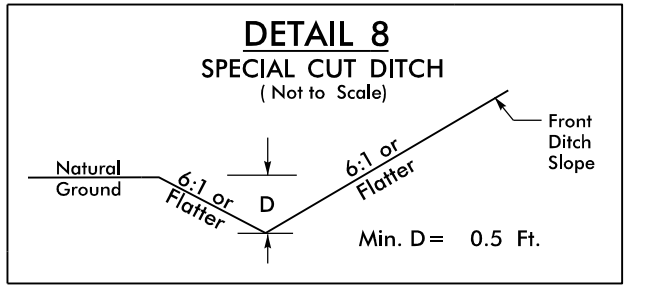
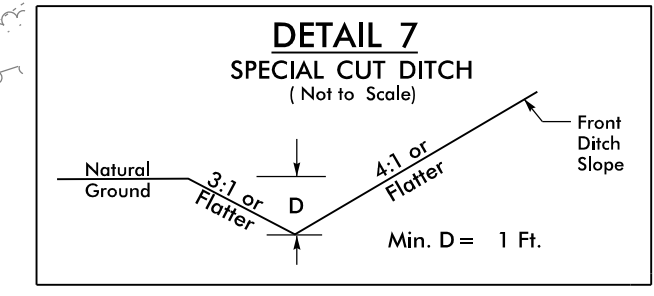
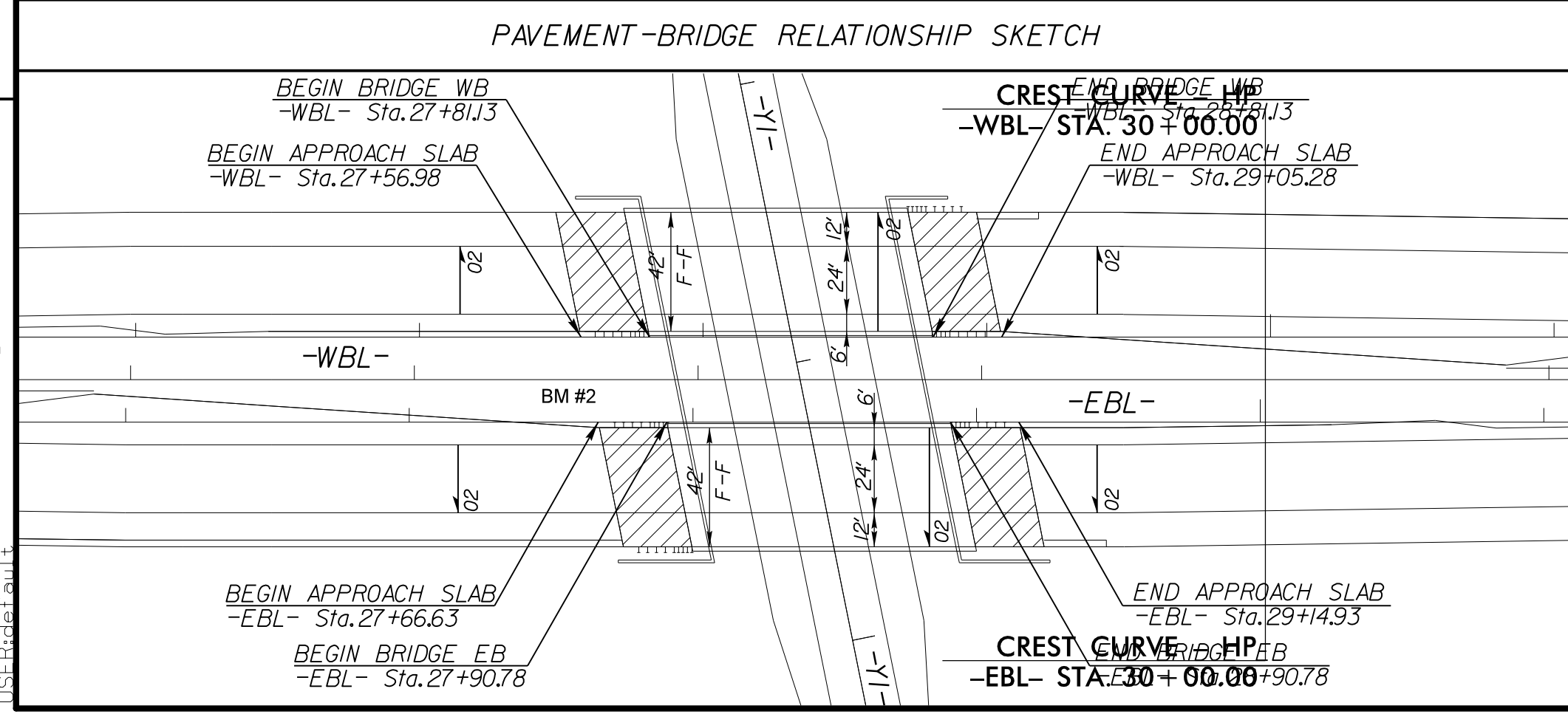
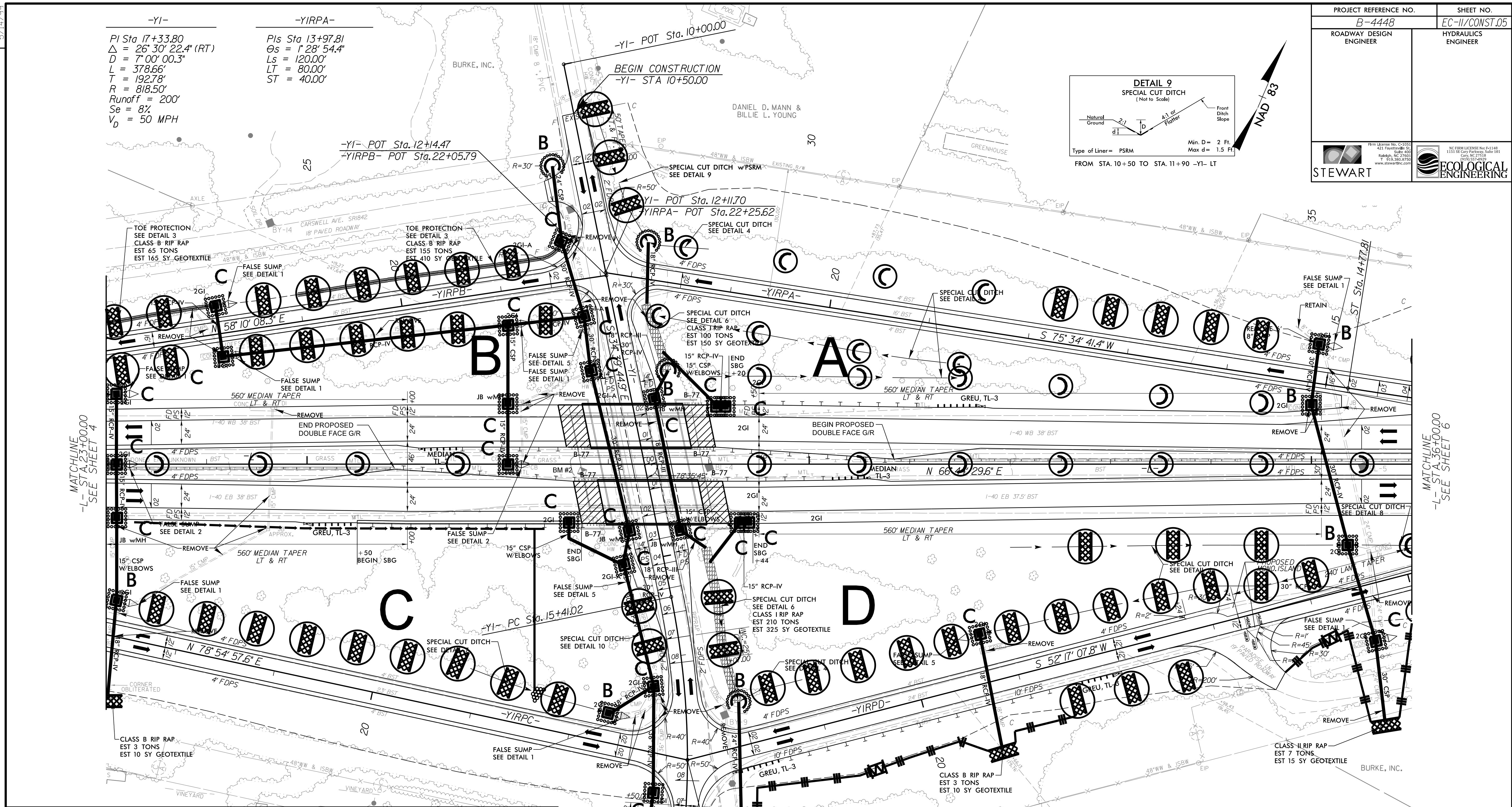
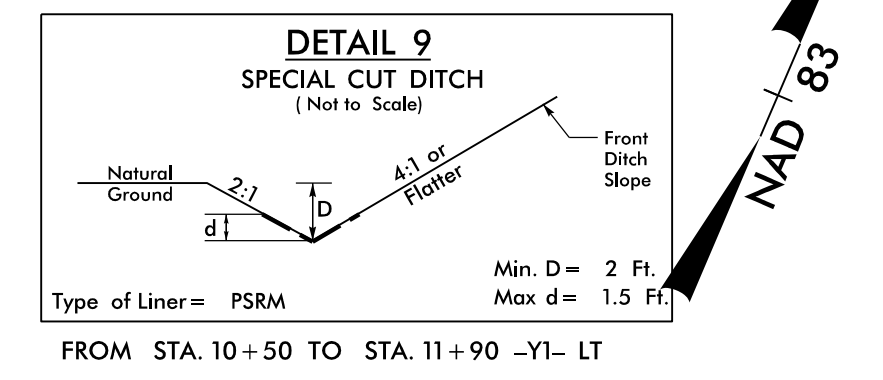


-YI-
 PI Sta 17+33.80
 $\Delta = 26^{\circ} 30' 22.4"$ (RT)
 $D = 7^{\circ} 00' 00.3"$
 $L = 378.66'$
 $T = 192.78'$
 $R = 818.50'$
 Runoff = 200'
 $S_e = 8\%$
 $V_D = 50$ MPH

-YIRPA-
 PIs Sta 13+97.81
 $\Theta_s = 1^{\circ} 28' 54.4"$
 $L_s = 120.00'$
 $LT = 80.00'$
 $ST = 40.00'$



STASH, INC.

THE ALIGNMENTS FOR VERTICAL PROFILES -WBL- & -EBL- ARE BASED ON OFFSETTING THE HORIZONTAL ALIGNMENT -L- 15 FEET LEFT AND RIGHT.

FOR DETOUR CONSTRUCTION, SEE SHEETS 2B-I THRU 2B-3

FOR -L- PROFILE (-WBL-), SEE SHEET 7

FOR -L- PROFILE (-EBL-), SEE SHEET 9

FOR -YI- PROFILE, SEE SHEET 11

FOR -YIRPA- PROFILE, SEE SHEET 12

FOR -YIRPB- PROFILE, SEE SHEET 12

FOR -YIRPC- PROFILE, SEE SHEET 13

FOR -YIRPD- PROFILE, SEE SHEET 13

FOR STRUCTURE PLANS, SEE SHEETS S-I THRU S-7

REVISIONS

MATCHLINE -L- STA. 23+00.00 SEE SHEET 4

MATCHLINE -L- STA. 36+00.00 SEE SHEET 6

3/6/2018 BEU.F.incl_PSH05.dgn