
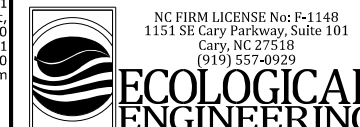
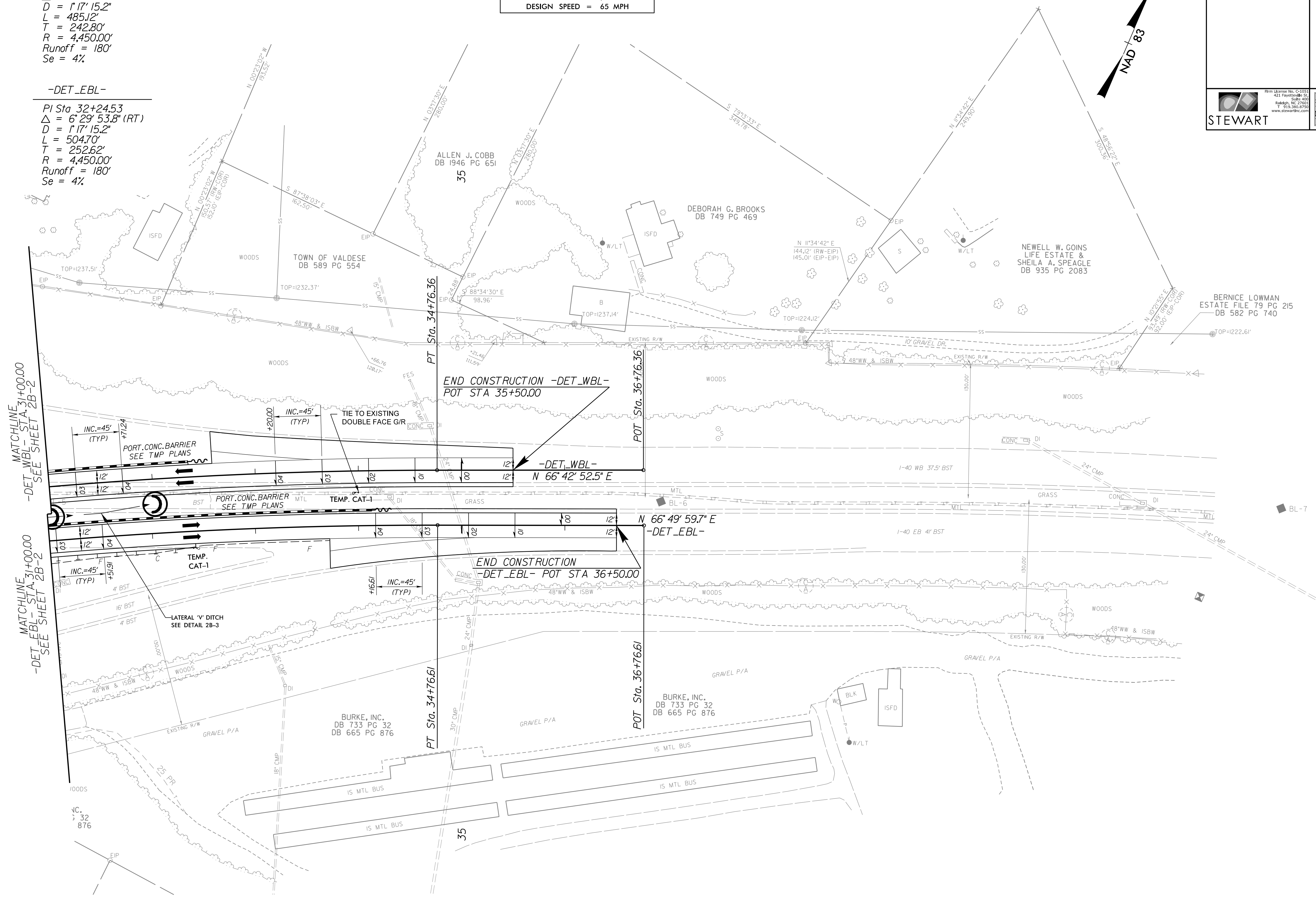
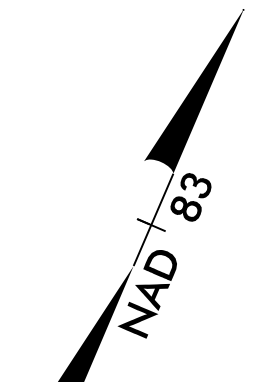


PROJECT REFERENCE NO. B-4448	SHEET NO. EC-09/CONST.2B-3
ROADWAY DESIGN ENGINEER	HYDRAULICS ENGINEER
 <small>Firm License No. C-2151 421 Fayetteville St. Raleigh, NC 27601 www.stewartinc.com</small>	 <small>NC REG. LICENSE No. E-1168 1515 S. Cary Parkway, Suite 101 Cary, NC 27513 www.ecologicaleng.com</small>

-DET_WBL-
 PI Sta 32+24.53
 $\Delta = 6' 14" 46.2" (RT)$
 $D = 1' 17" 15.2"$
 $L = 485.12'$
 $T = 242.80'$
 $R = 4,450.00'$
 $Runoff = 180'$
 $Se = 4\%$

-DET_EBL-
 PI Sta 32+24.53
 $\Delta = 6' 29' 53.8" (RT)$
 $D = 1' 17" 15.2"$
 $L = 504.70'$
 $T = 252.62'$
 $R = 4,450.00'$
 $Runoff = 180'$
 $Se = 4\%$

FOR DETOUR CONSTRUCTION ONLY
 2018 ADT = 48,260
 DESIGN SPEED = 65 MPH

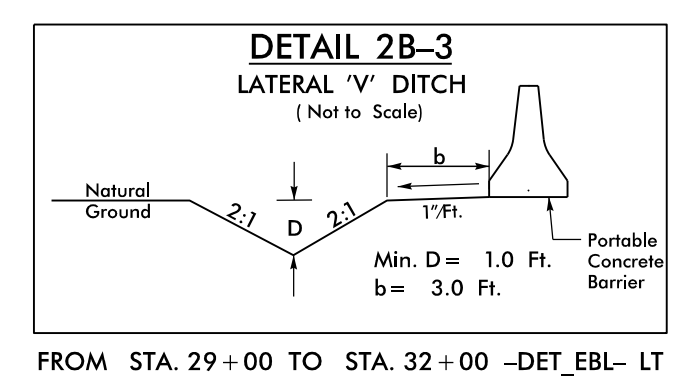


MATCHLINE -STA. 31+00.00
-DET_WBL- STA. 31+00.00
SEE SHEET 2B-2

MATCHLINE -STA. 31+00.00
-DET_EBL- STA. 31+00.00
SEE SHEET 2B-2

END CONSTRUCTION -DET_WBL-
 POT STA 35+50.00

END CONSTRUCTION -DET_EBL-
 POT STA 36+50.00



FROM STA. 29+00 TO STA. 32+00 -DET_EBL- LT

FOR -DET_WBL- PROFILE, SEE SHEET 15
 FOR -DET_EBL- PROFILE, SEE SHEET 17

REVISIONS

3/6/2018 REU_Detour_PSH02B-3.dgn
 IIS:field