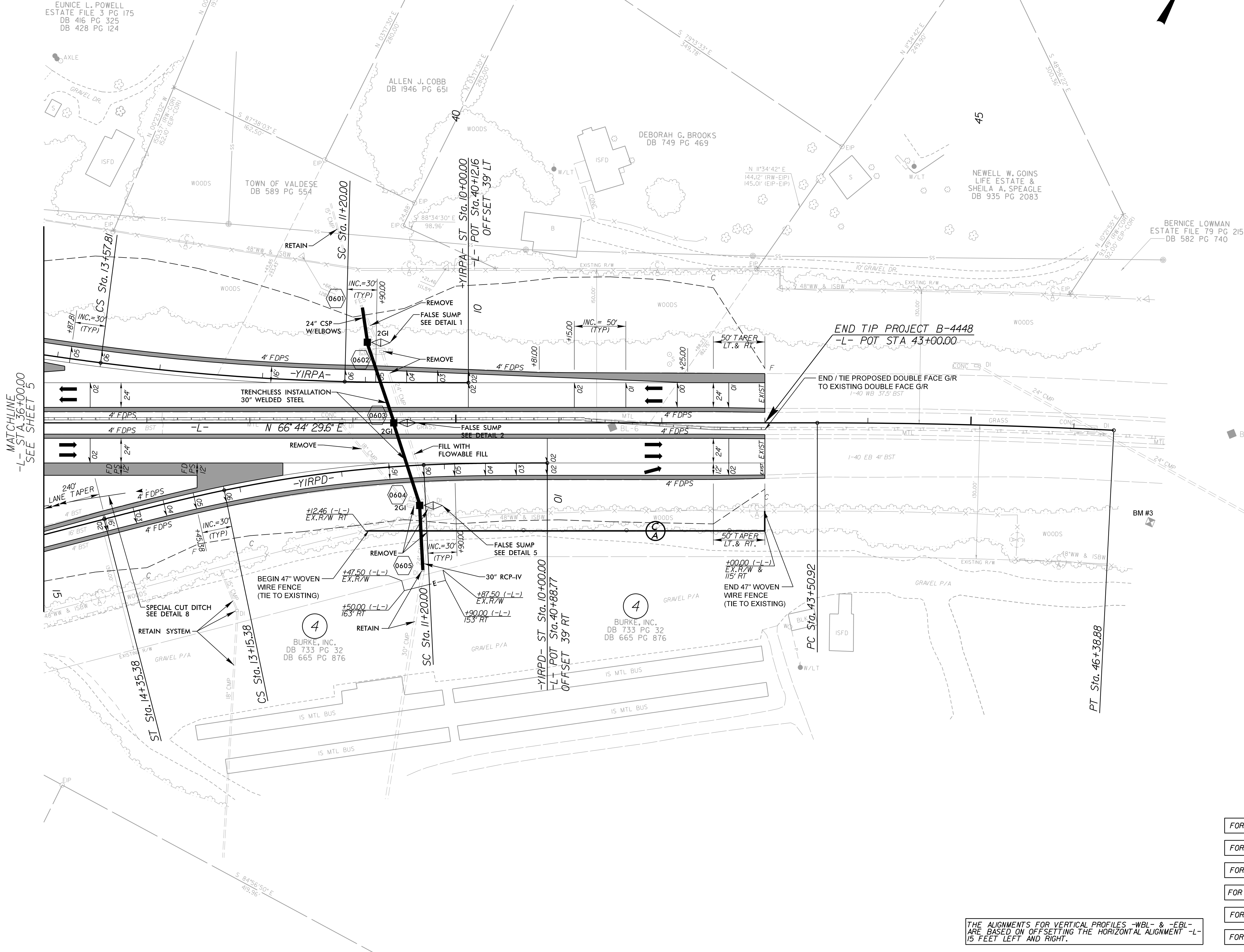
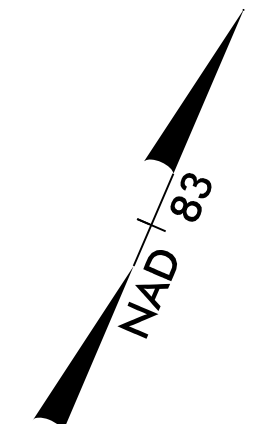


PROJECT REFERENCE NO. B-4448	SHEET NO. 6
ROADWAY DESIGN ENGINEER ANDREW P. YOUNG SEAL 034407 5/14/2018	HYDRAULICS ENGINEER FRANK F. FLEMING SEAL 20147 5/14/2018
STEWART ENGINEERING	ECOLOGICAL ENGINEERING
DOCUMENT NOT CONSIDERED FINAL UNLESS ALL SIGNATURES COMPLETED	

-L-	-YIRPA-	-YIRPD-
PI Sta 44+94.93 Δ = 2'52" 46.1" (RT) D = 1'00" 00.0" L = 287.95' T = 144.01' R = 5,729.65'	PIs Sta 10+80.00 Θs = 1'28" 54.4" Ls = 120.00' LT = 80.00' ST = 40.00'	PIs Sta 12+39.01 Δ = 5'52" 23.0" (RT) D = 2'28" 10.7" L = 237.81' T = 119.01' R = 2,320.00' Runoff = 180' Se = 6%
	PIs Sta 13+97.81 Θs = 1'28" 54.4" Ls = 120.00' LT = 80.00' ST = 40.00'	PIs Sta 10+80.01 Θs = 2'45" 00.7" Ls = 120.00' LT = 80.01' ST = 40.01'
		PIs Sta 12+17.89 Δ = 8'57" 20.4" (LT) D = 4'35" 01.2" L = 195.38' T = 97.89' R = 1,250.00' Runoff = 180' Se = 6% V <sub>d</sub> = 45 MPH
		PIs Sta 13+55.39 Θs = 2'45" 00.7" Ls = 120.00' LT = 80.01' ST = 40.01'



REVISIONS

MATCHLINE  
-L- STA. 36+00.00  
SEE SHEET 5

- FOR DETOUR CONSTRUCTION, SEE SHEETS 2B-1 THRU 2B-3
- FOR DRAINAGE DETAILS SEE SHEET 2D-1
- FOR -L- PROFILE (-WBL-), SEE SHEET 8
- FOR -L- PROFILE (-EBL-), SEE SHEET 10
- FOR -YIRPA- PROFILE, SEE SHEET 12
- FOR -YIRPD- PROFILE, SEE SHEET 13

THE ALIGNMENTS FOR VERTICAL PROFILES -WBL- & -EBL- ARE BASED ON OFFSETTING THE HORIZONTAL ALIGNMENT -L- 15 FEET LEFT AND RIGHT.

5/10/2018 B4448\_RDY\_PSH06.dgn