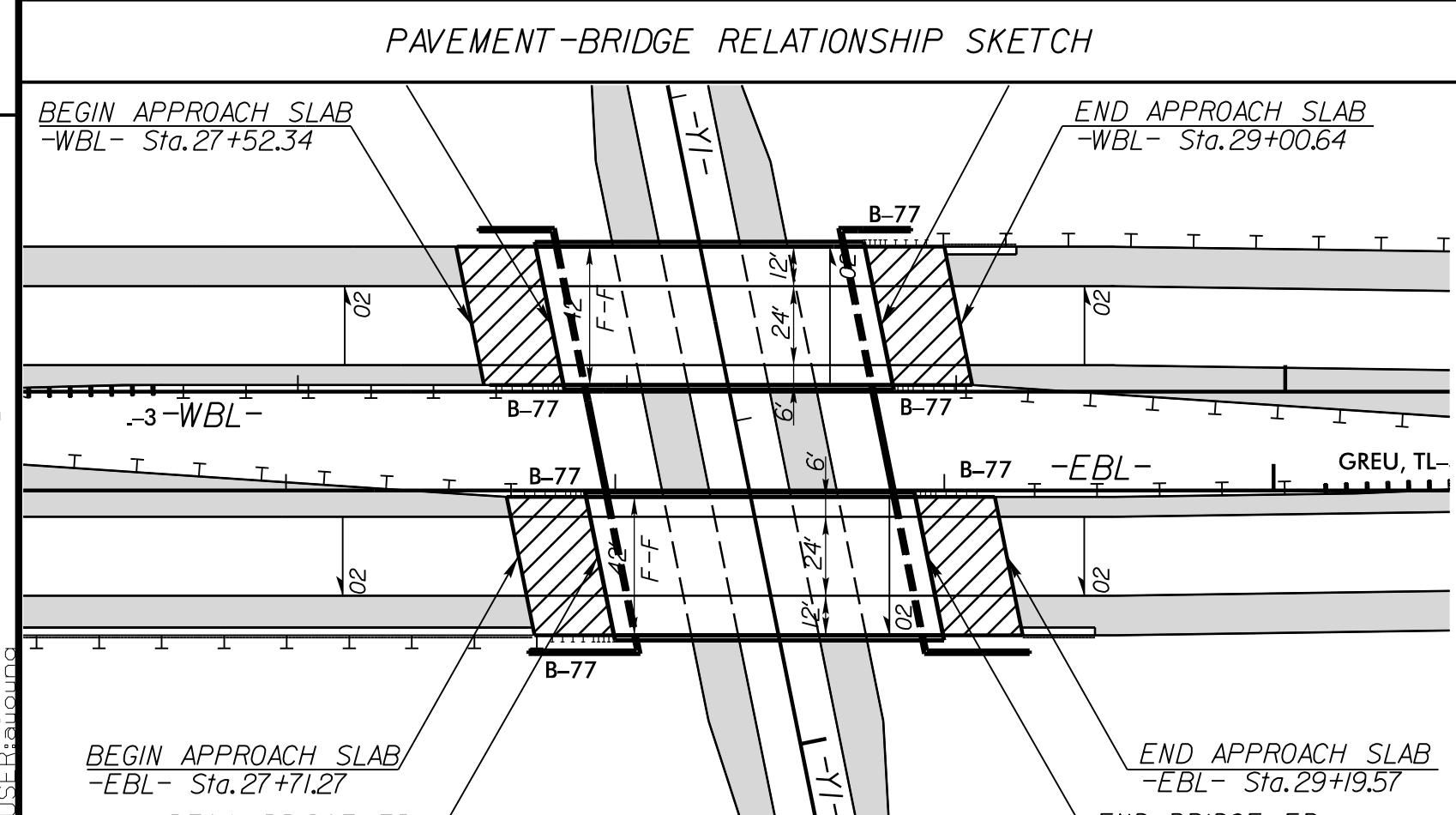
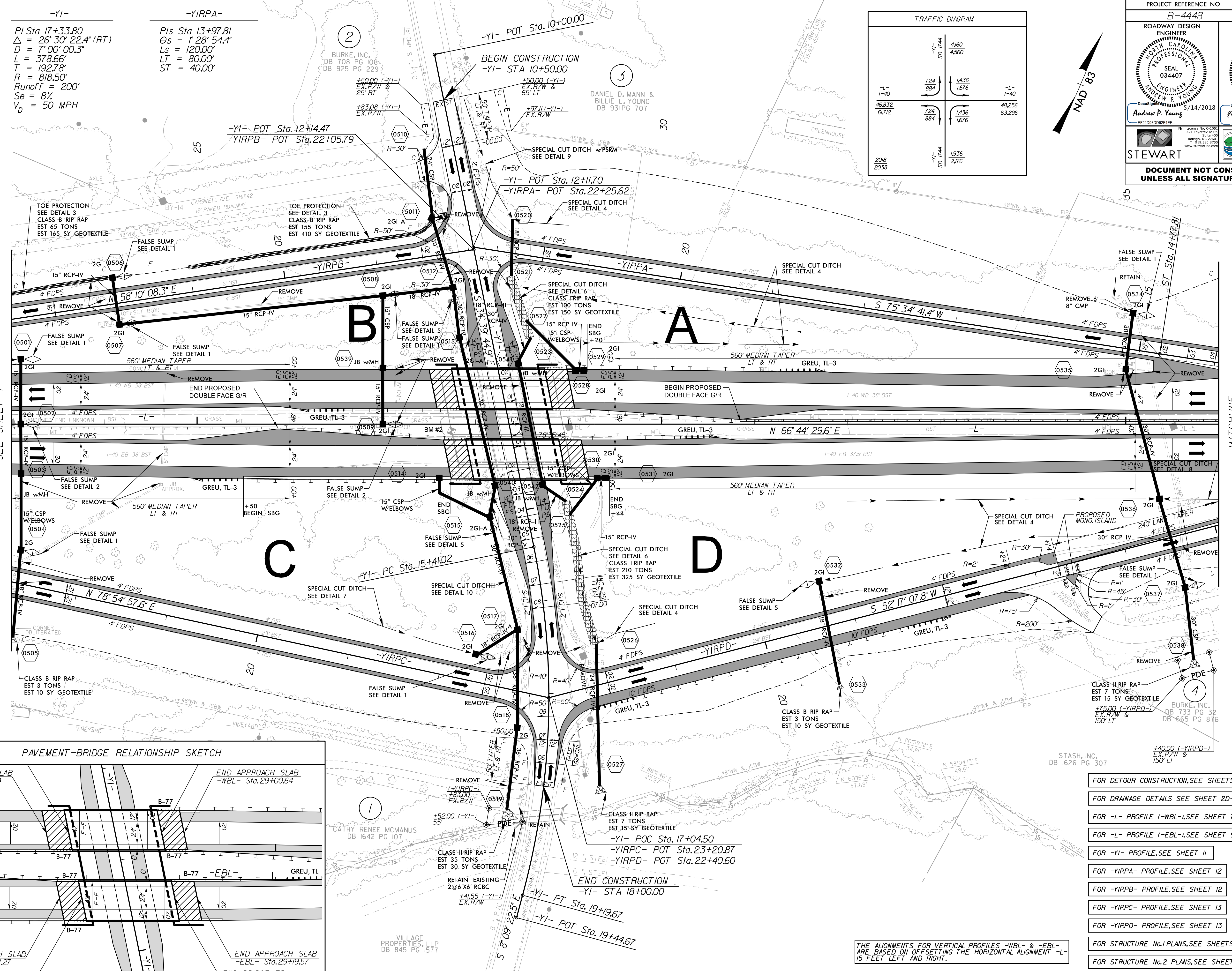
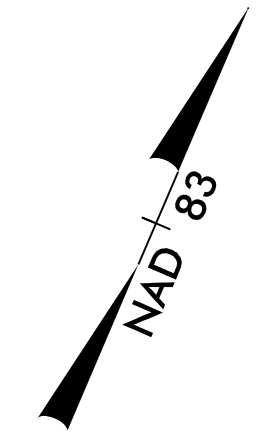


PROJECT REFERENCE NO. <b>B-4448</b>	SHEET NO. <b>5</b>
ROADWAY DESIGN ENGINEER <b>ANDREW P. VAUGHN</b> PROFESSIONAL SEAL 034407	HYDRAULICS ENGINEER <b>FRANK F. FLEMING</b> PROFESSIONAL SEAL 20147
5/14/2018 Andrew P. Vaughn	5/14/2018 Frank F. Fleming
<b>DOCUMENT NOT CONSIDERED FINAL UNLESS ALL SIGNATURES COMPLETED</b>	

-L- 1-40 46,832 6,712	-YI- SR 1744 724 884	-YI- SR 1744 4,160 4,560	-L- 1-40 48,256 63,296
2018 2038	-YI- SR 1744 724 884	-YI- SR 1744 1,936 2,176	



- FOR DETOUR CONSTRUCTION, SEE SHEETS 2B-1 THRU 2B-3
- FOR DRAINAGE DETAILS SEE SHEET 2D-1
- FOR -L- PROFILE (-WBL-), SEE SHEET 7
- FOR -L- PROFILE (-EBL-), SEE SHEET 9
- FOR -YI- PROFILE, SEE SHEET 11
- FOR -YIRPA- PROFILE, SEE SHEET 12
- FOR -YIRPB- PROFILE, SEE SHEET 12
- FOR -YIRPC- PROFILE, SEE SHEET 13
- FOR -YIRPD- PROFILE, SEE SHEET 13
- FOR STRUCTURE No.1 PLANS, SEE SHEETS S1-1 THRU S1-25
- FOR STRUCTURE No.2 PLANS, SEE SHEETS S2-1 THRU S2-25

THE ALIGNMENTS FOR VERTICAL PROFILES -WBL- & -EBL- ARE BASED ON OFFSETTING THE HORIZONTAL ALIGNMENT -L- 15 FEET LEFT AND RIGHT.

REVISIONS

5/14/2018 B4448\_RDY\_PSH05.dgn