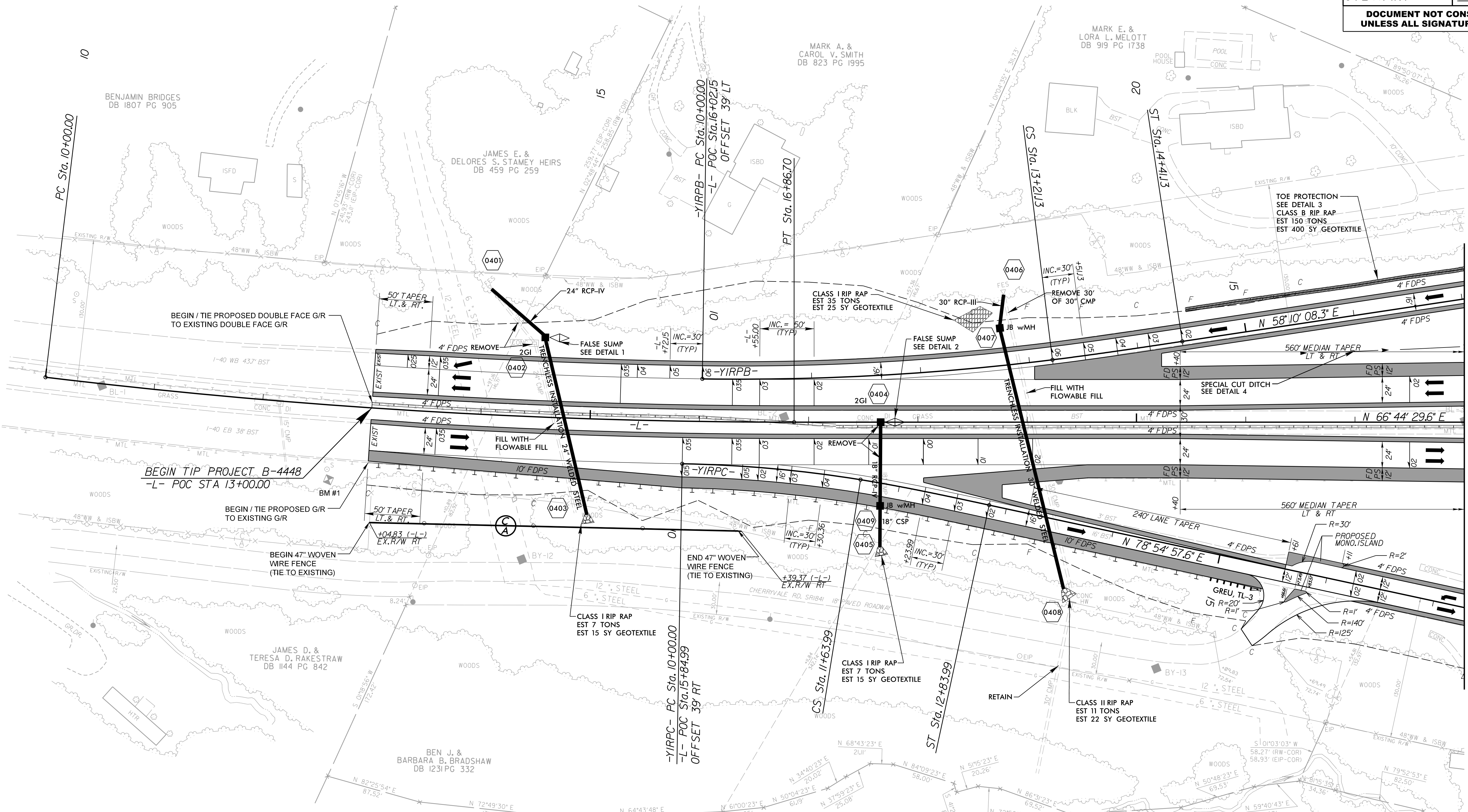
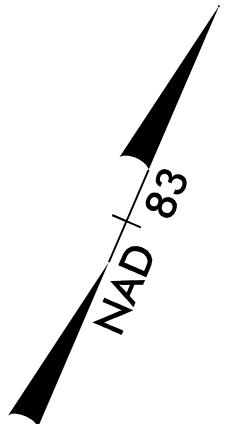


PROJECT REFERENCE NO. B-4448	SHEET NO. 4
ROADWAY DESIGN ENGINEER ANDREW P. YOUNG SEAL 034407 NORTH CAROLINA PROFESSIONAL ENGINEERS ASSOCIATION	HYDRAULICS ENGINEER FRANK F. FLEMING SEAL 20147 NORTH CAROLINA PROFESSIONAL ENGINEERS ASSOCIATION
Discipline: 5/14/2018 Andrew P. Young EP21080002024EE	Discipline: 5/14/2018 Frank F. Fleming R102721A86A466
STEWART	ECOLOGICAL ENGINEERING
DOCUMENT NOT CONSIDERED FINAL UNLESS ALL SIGNATURES COMPLETED	

-L-	-YIRPB-	-YIRPC-
PI Sta 13+43.76 Δ = 6'52"00.8" (LT) D = 1'00"00.0" L = 686.70' T = 343.76' R = 5,729.65' Runoff = 175' Se = 3.5%	PI Sta 11+60.82 Δ = 7'55"50.8" (LT) D = 2'28"10.7" L = 321.13' T = 160.82' R = 2,320.00' Runoff = 180' Se = 6%	PIs Sta 13+61.13 Os = 1'28"54.4" Ls = 120.00' LT = 80.00' ST = 40.00'
		PI Sta 10+82.13 Δ = 8'10"12.8" (RT) D = 4'58"56.1" L = 163.99' T = 82.13' R = 1,150.00' Runoff = 120' Se = 4% V _D = 30 MPH
		PIs Sta 12+04.00 Os = 2'59"21.6" Ls = 120.00' LT = 80.01' ST = 40.01'



REVISIONS

MATCHLINE
-L- STA. 23+00.00
SEE SHEET 5

- FOR DETOUR CONSTRUCTION, SEE SHEETS 2B-1 THRU 2B-3
- FOR DRAINAGE DETAILS SEE SHEET 2D-1
- FOR -L- PROFILE (-WBL-), SEE SHEET 7
- FOR -L- PROFILE (-EBL-), SEE SHEET 9
- FOR -YIRPB- PROFILE, SEE SHEET 12
- FOR -YIRPC- PROFILE, SEE SHEET 13

THE ALIGNMENTS FOR VERTICAL PROFILES -WBL- & -EBL- ARE BASED ON OFFSETTING THE HORIZONTAL ALIGNMENT -L- 15 FEET LEFT AND RIGHT.

5/14/2018 B4448_PDX_PSH04.dgn