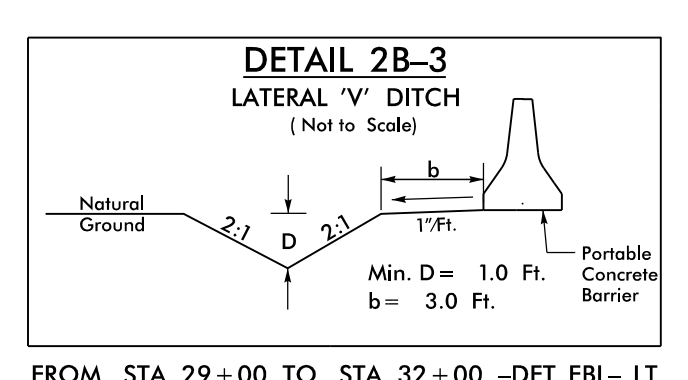
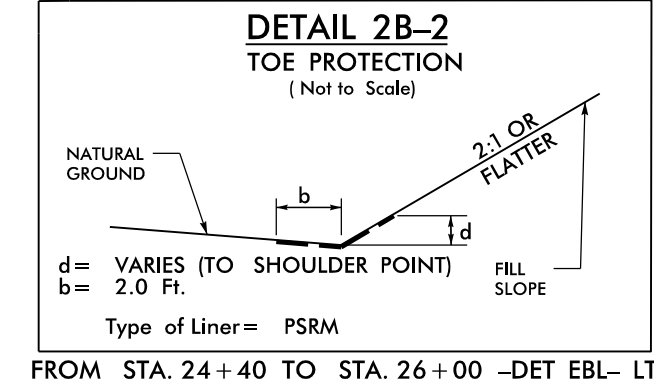
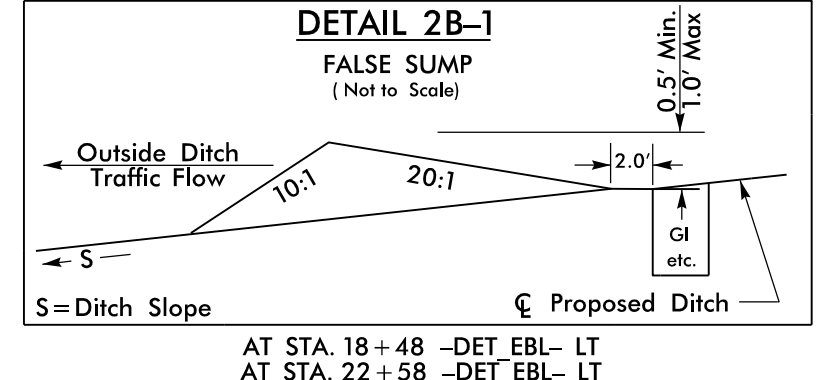
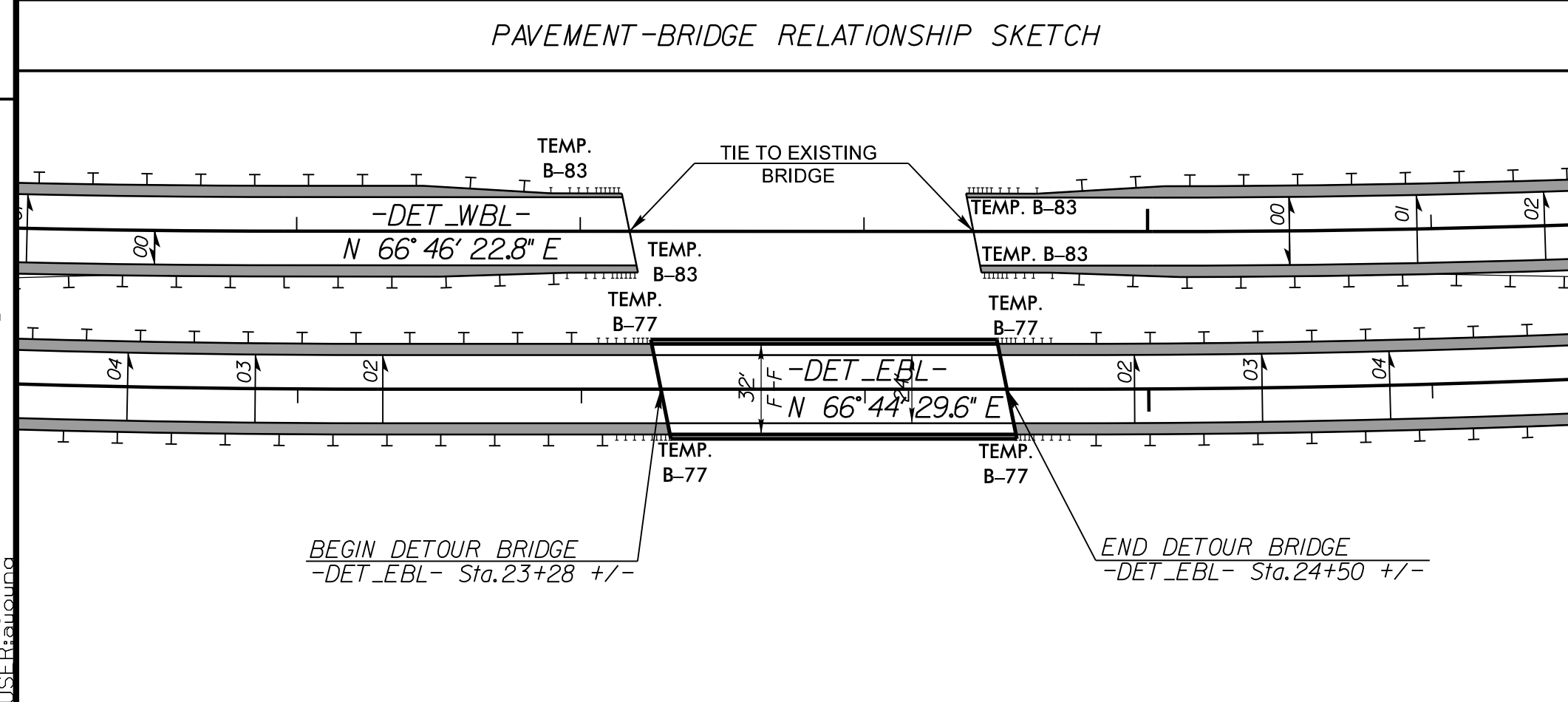
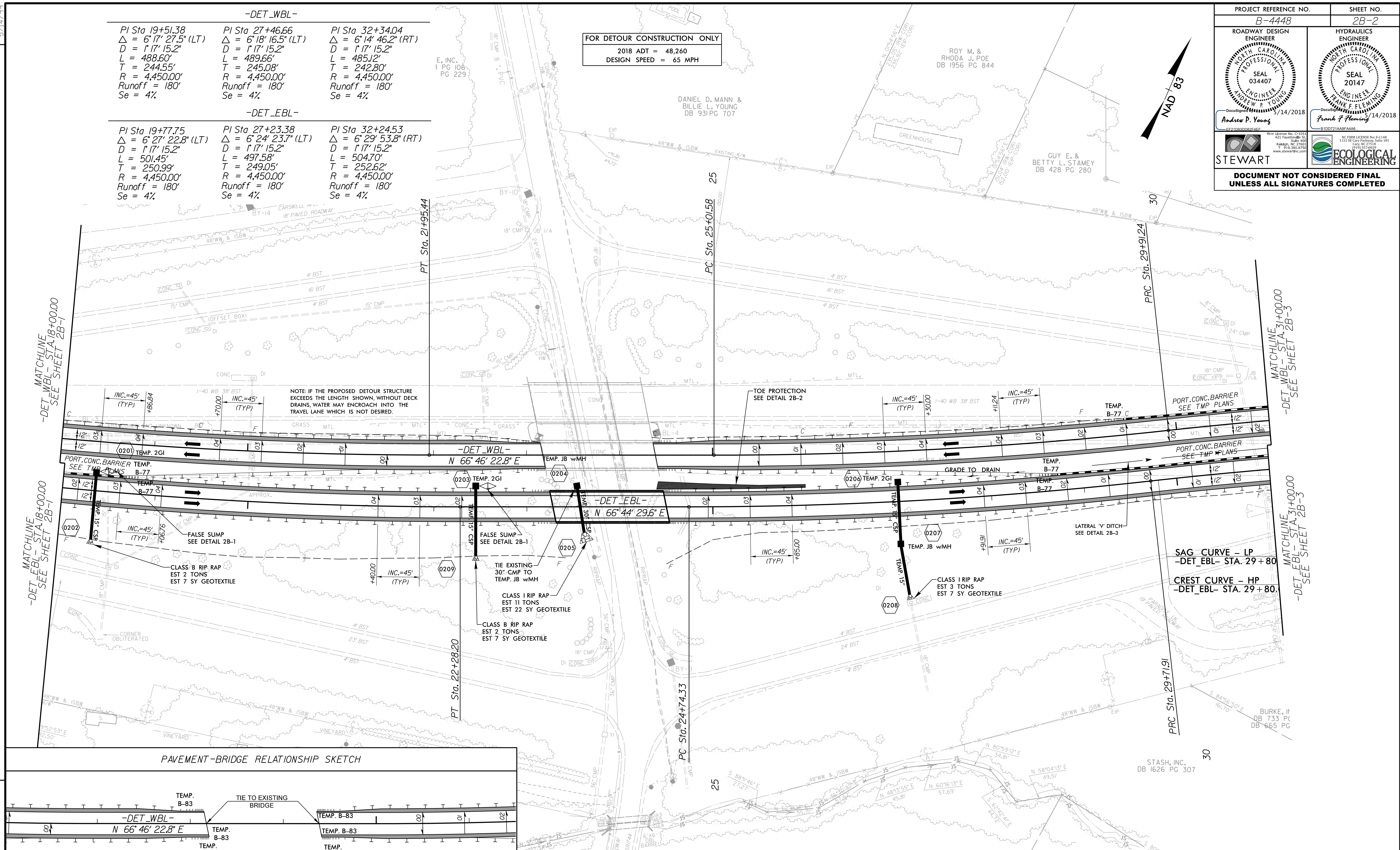
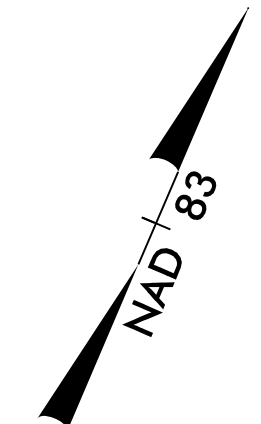


PROJECT REFERENCE NO. B-4448	SHEET NO. 2B-2
ROADWAY DESIGN ENGINEER ANDREW P. YOUNG SEAL 034407 5/14/2018	HYDRAULICS ENGINEER FRANK F. FLEMING SEAL 20147 5/14/2018
STEWART	ECOLOGICAL ENGINEERING
DOCUMENT NOT CONSIDERED FINAL UNLESS ALL SIGNATURES COMPLETED	

-DET_WBL-		
PI Sta 19+51.38 Δ = 6' 17" 22.8" (LT) D = 1' 17" 15.2" L = 488.60' T = 244.55' R = 4,450.00' Runoff = 180' Se = 4%	PI Sta 27+46.66 Δ = 6' 18" 16.5" (LT) D = 1' 17" 15.2" L = 489.66' T = 245.08' R = 4,450.00' Runoff = 180' Se = 4%	PI Sta 32+34.04 Δ = 6' 14" 46.2" (RT) D = 1' 17" 15.2" L = 485.12' T = 242.80' R = 4,450.00' Runoff = 180' Se = 4%
-DET_EBL-		
PI Sta 19+77.75 Δ = 6' 27" 22.8" (LT) D = 1' 17" 15.2" L = 501.45' T = 250.99' R = 4,450.00' Runoff = 180' Se = 4%	PI Sta 27+23.38 Δ = 6' 24" 23.7" (LT) D = 1' 17" 15.2" L = 497.58' T = 249.05' R = 4,450.00' Runoff = 180' Se = 4%	PI Sta 32+24.53 Δ = 6' 29" 53.8" (RT) D = 1' 17" 15.2" L = 504.70' T = 252.62' R = 4,450.00' Runoff = 180' Se = 4%

FOR DETOUR CONSTRUCTION ONLY
2018 ADT = 48,260
DESIGN SPEED = 65 MPH



FOR -DET_WBL- PROFILE, SEE SHEET 14

FOR -DET_EBL- PROFILE, SEE SHEET 16

REVISIONS

5/14/19

5/10/2018 B4448_RDY_PSH02B-2.dgn