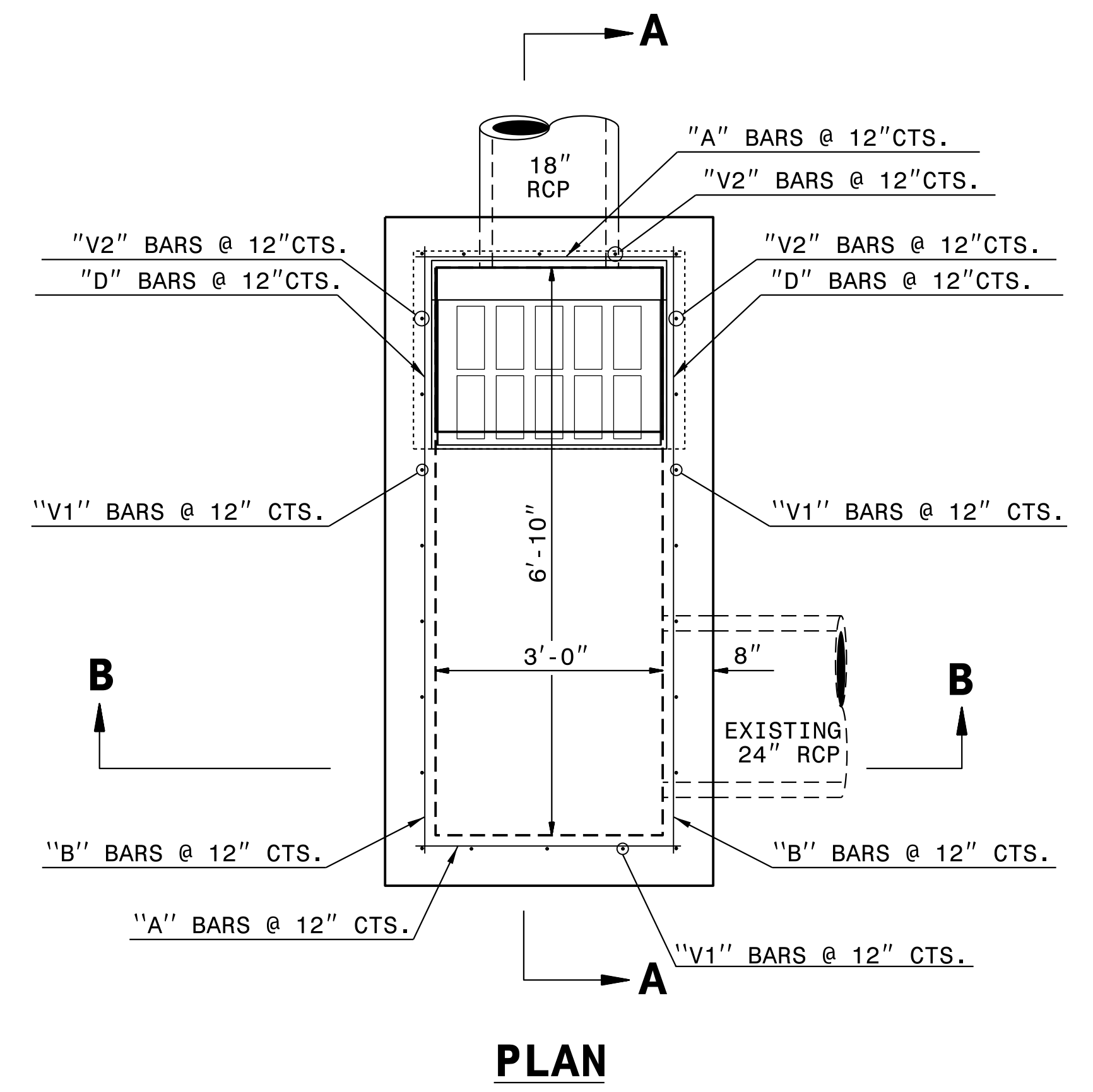
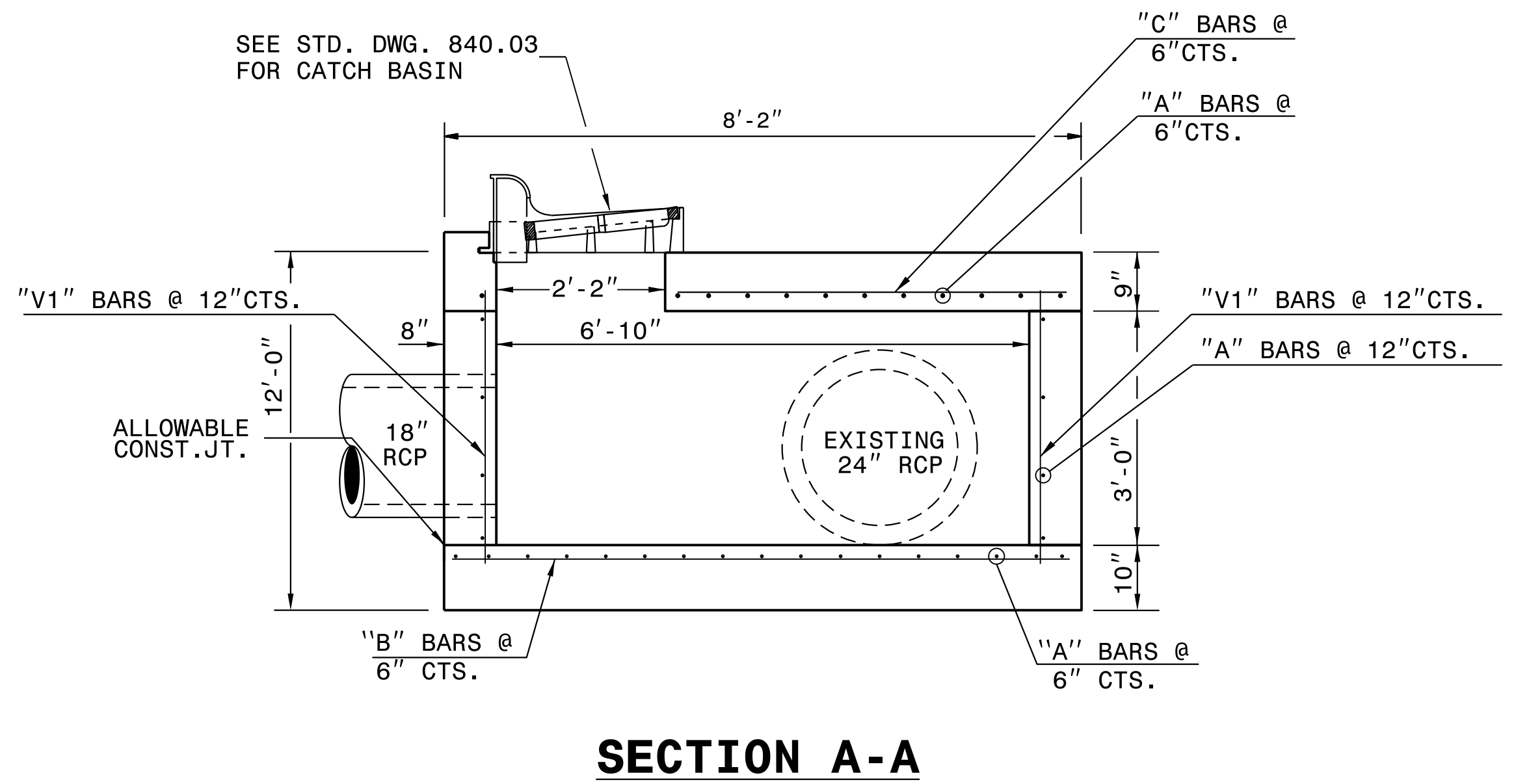
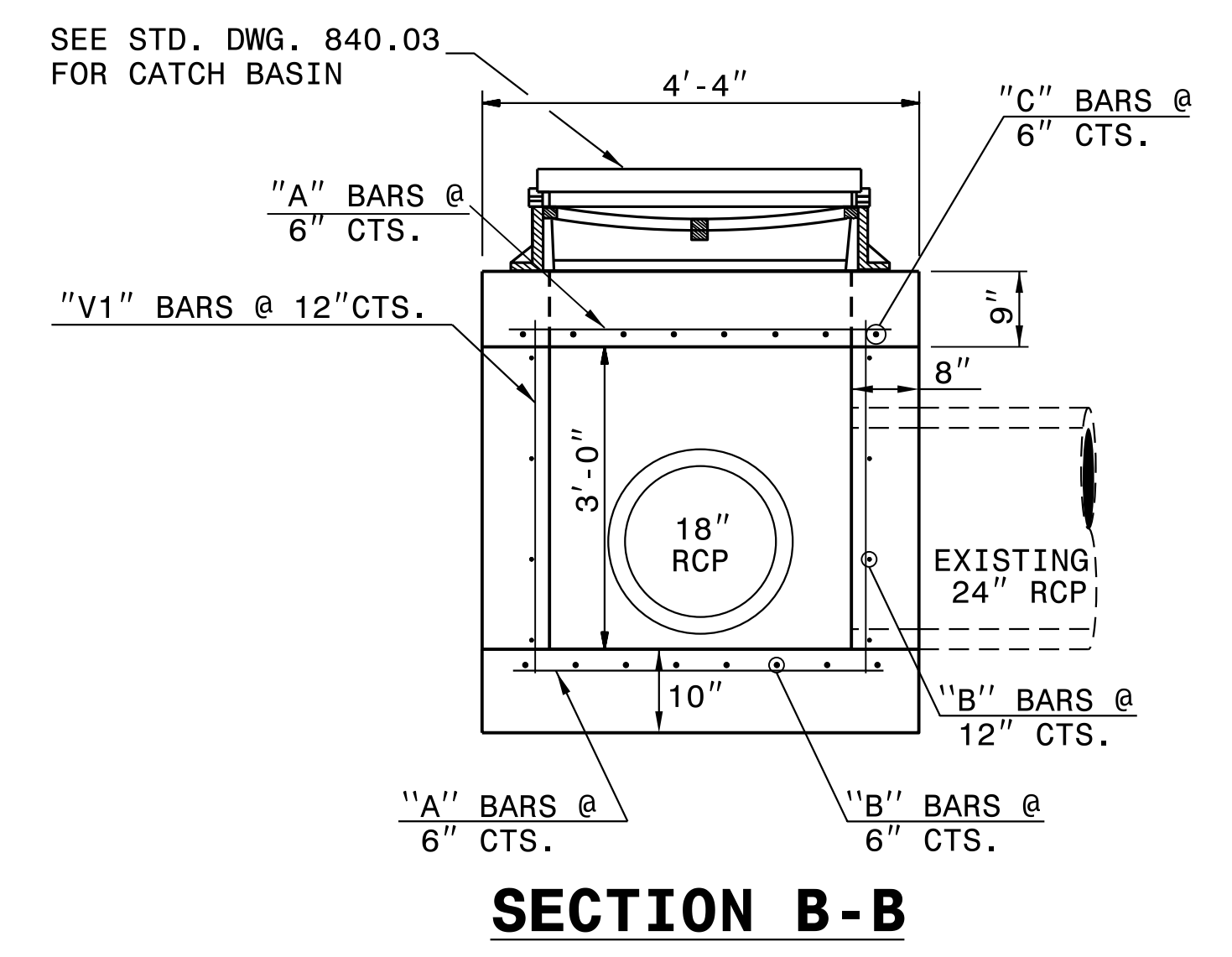


| | |
|--|-----------------|
| PROJECT REFERENCE NO. P-5705BA | SHEET NO. 2Y |
| | |
| DOCUMENT NOT CONSIDERED FINAL UNLESS ALL SIGNATURES COMPLETED | |



GENERAL NOTES:

1. USE CLASS "AA" CONCRETE THROUGHOUT.
2. CONSTRUCT CONCRETE BOX IN ACCORDANCE WITH SECTION 825 OF THE STANDARD SPECIFICATIONS.
3. USE FORMS TOR CONSTRUCT THE BOTTOM SLAB.
4. ADJUST LENGTH OF STEEL BARS AS NEEDED TO COMPENSATE FOR PIPES AND FRAME AND GRATE OPENINGS.
5. REINFORCING STEEL SHALL CONFORM TO ASTM A 615, GRADE 60.
6. CUT OR BEND STEEL BARS AS NEEDED TO PROVIDE 2" CLEARANCE.
7. LOCATE FRAME AND GRATE AS FIELD CONDITIONS DICTATE AND AS DIRECTED BY THE ENGINEER.
8. DIMENSIONS MAY BE ADJUSTED AS DIRECTED BY THE ENGINEER.



BILL OF MATERIALS

| BAR | QTY | SIZE | LENGTH | WEIGHT |
|---------------------------|-----|------|--------|--------|
| A | 37 | #5 | 4'-0" | 154 |
| B | 16 | #5 | 7'-10" | 131 |
| C | 8 | #5 | 5'-0" | 42 |
| | | | | |
| V1 | 24 | #5 | 3'-6" | 88 |
| | | | | |
| TOTAL REINF. STEEL (lbs.) | | | | 415 |
| TOTAL CONC. CU. YDS. | | | | 3.5 |
| | | | | |
| | | | | |
| | | | | |

NO DEDUCTIONS HAVE BEEN MADE TO ACCOMMODATE PIPES OR CATCH BASIN OPENING.

**CONTRACT SERVICES
AND DEVELOPMENT UNIT**
Office 919-707-6950 FAX 919-250-4119

**DETAIL OF SPECIAL
OFFSET CATCH BASIN**

| | |
|--|--------------------|
| ORIGINAL BY: K.A.KEMPF | DATE: JAN 10, 2018 |
| MODIFIED BY: | DATE: |
| CHECKED BY: | DATE: |
| FILE SPEC.: s:details/kkempf/english/P5705B_tb_cb_offset.dgn | |

I:\AN-2018\1342\5\Contracts\Special Details\kempf\english\P5705B_tb_cb_offset.dgn
Jhowerton AT_CSD-292595