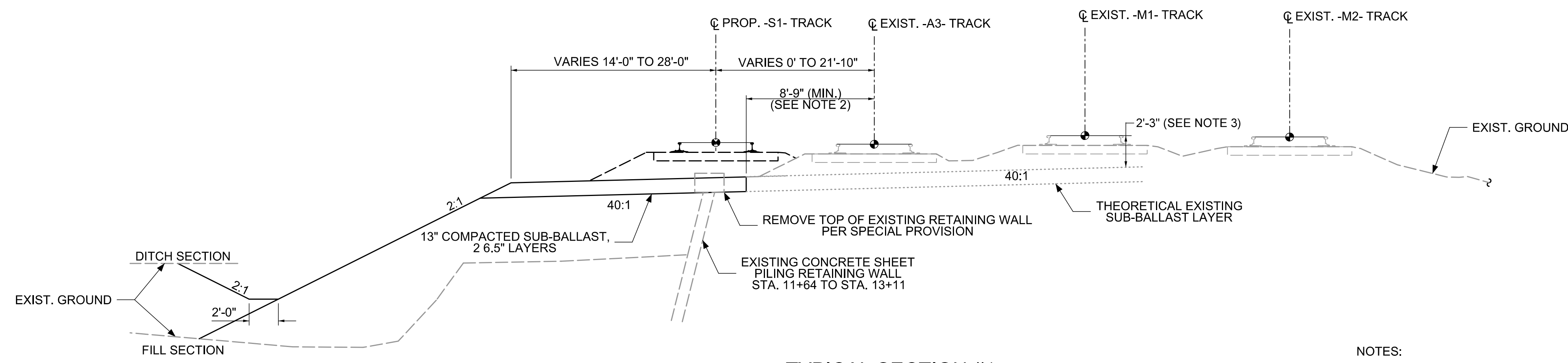
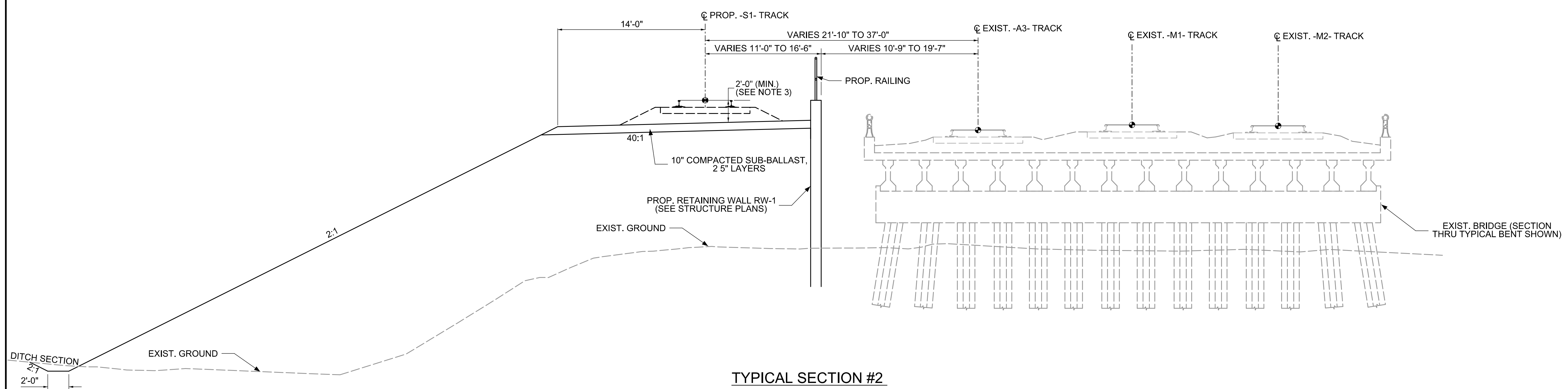


PROJECT REFERENCE NO. P-5705BA		SHEET NO. 2	
RW SHEET NO.			
RAILROAD DESIGN ENGINEER			



**TYPICAL SECTION #1**  
 -S1- STA. 10+00 TO STA. 13+11

- NOTES:
1. THE TYPICAL SECTIONS TAKE PRECEDENCE OVER THE CROSS SECTIONS. CROSS SECTIONS ARE PROVIDED FOR REFERENCE ONLY.
  2. DIMENSION SHOWN IS FOR BIDDING PURPOSES ONLY AND MUST BE COORDINATED WITH THE NORFOLK SOUTHERN REPRESENTATIVE PRIOR TO CONSTRUCTION. SEE 'EXCAVATION ADJACENT TO ACTIVE TRACK DETAIL' FOR REQUIREMENTS.
  3. ANY CHANGES IN THE DISTANCE BETWEEN THE PROPOSED TOP OF RAIL AND THE PROPOSED TOP OF SUB-BALLAST SHALL BE MADE OVER A DISTANCE OF 50 TRACK FEET OR AS DIRECTED BY THE RAILROAD ENGINEER IN THE FIELD. POSITIVE DRAINAGE AWAY FROM THE MAINLINE TRACKS SHALL BE MAINTAINED AT ALL TIMES WHILE MAINTAINING A CONSTANT 40:1 CROSS SLOPE WITHIN 5' OF PROPOSED TRACK CENTERLINE.



**TYPICAL SECTION #2**  
 -S1- STA. 13+11 TO STA. 14+53 (+/- BEGIN BRIDGE)