

**This electronic collection of documents is provided
for the convenience of the user
and is Not a Certified Document –**

**The documents contained herein were originally issued
and sealed by the individuals whose names and license
numbers appear on each page, on the dates appearing
with their signature on that page.**

**This file or an individual page
shall not be considered a certified document.**

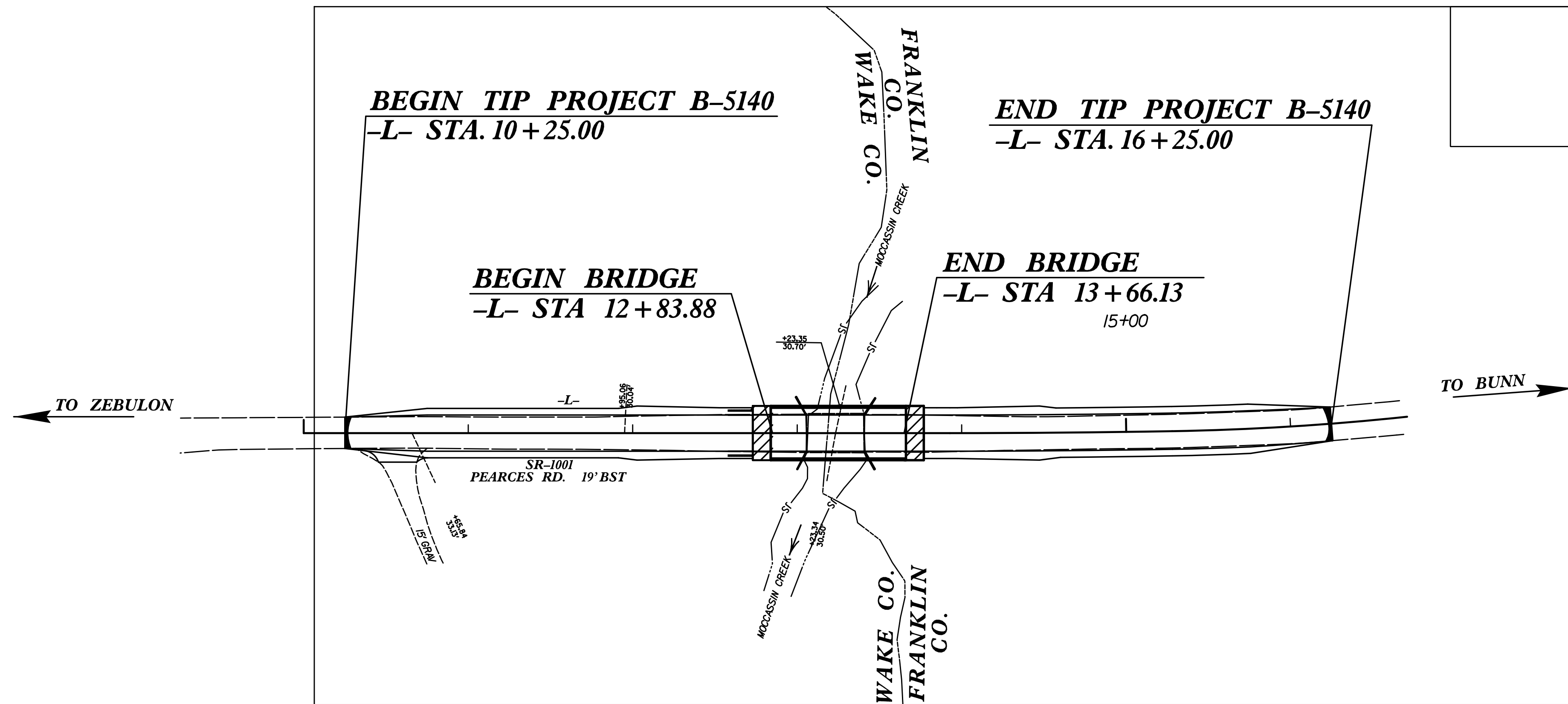
TIP PROJECT: B-5140

STATE OF NORTH CAROLINA
DIVISION OF HIGHWAYS
PLAN FOR PROPOSED
HIGHWAY EROSION CONTROL

WAKE COUNTY

**BRIDGE NO. 195 OVER MOCCASIN CREEK
ON SR 1001 (PEARCES ROAD)**

GRADING, PAVING, DRAINAGE, AND STRUCTURE



STATE	STATE PROJECT REFERENCE NO.	SHEET NO.	TOTAL SHEETS
N.C.	B-5140	EC-1	
STATE PROJ. NO.	F.A. PROJ. NO.	DESCRIPTION	
	R/W		

EROSION AND SEDIMENT CONTROL MEASURES

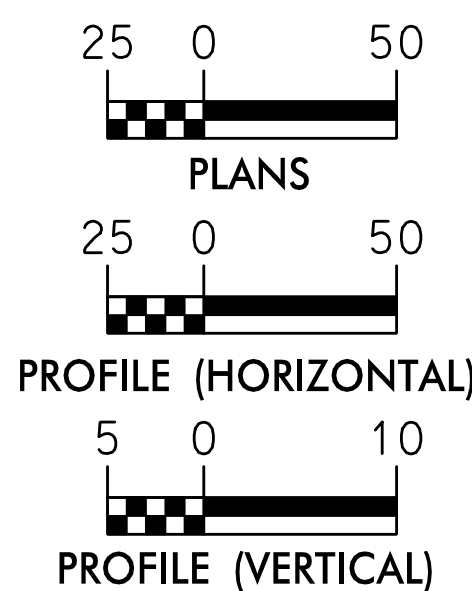
Sed. #	Description	Symbol
1630.03	Temporary Silt Ditch	TD
1630.05	Temporary Diversion	TD
1605.01	Temporary Silt Fence	
1606.01	Special Sediment Control Fence	△△△
1622.01	Temporary Berms and Slope Drains	—
1630.02	Silt Basin Type B	▨
1633.01	Temporary Rock Silt Check Type-A	▩
	Temporary Rock Silt Check Type-A with Matting and Polyacrylamide (PAM)	▩
1633.02	Temporary Rock Silt Check Type-B	▩
	Wattle/Coir Fiber Wattle	—
	Wattle/Coir Fiber Wattle with Polyacrylamide (PAM)	—
1634.01	Temporary Rock Sediment Dam Type-A	▩
1634.02	Temporary Rock Sediment Dam Type-B	▩
1635.01	Rock Pipe Inlet Sediment Trap Type-A	⊓
1635.02	Rock Pipe Inlet Sediment Trap Type-B	⊓
1630.04	Stilling Basin	▭
1630.06	Special Stilling Basin	▭
	Rock Inlet Sediment Trap:	
1632.01	Type A	A
1632.02	Type B	B
1632.03	Type C	C
	Skimmer Basin	▭
	Tiered Skimmer Basin	▭
	Infiltration Basin	▭

**THIS PROJECT CONTAINS
EROSION CONTROL PLANS
FOR CLEARING AND
GRUBBING PHASE OF
CONSTRUCTION.**

**ENVIRONMENTALLY
SENSITIVE AREA(S) EXIST
ON THIS PROJECT**
*Refer To E. C. Special Provisions
for Special Considerations.*

**THIS PROJECT HAS
BEEN DESIGNED TO
SENSITIVE WATERSHED
STANDARDS.**

GRAPHIC SCALE



THESE EROSION AND SEDIMENT CONTROL PLANS COMPLY WITH THE REGULATIONS SET FORTH BY THE NCG-010000 GENERAL CONSTRUCTION PERMIT EFFECTIVE AUGUST 1, 2016 AND ISSUED BY THE NORTH CAROLINA DEPARTMENT OF ENVIRONMENT AND NATURAL RESOURCES DIVISION OF WATER RESOURCES.



NC FIRM LICENSE No: F-1148
1151 SE Cary Parkway
Suite 101
Cary, NC 27518
(919) 557-0929

Designed by:
BRANDON T. BARHAM, PE 3368
NAME LEVEL III CERTIFICATION NO.

Reviewed In the Office of:
ROADSIDE ENVIRONMENTAL UNIT
1 South Wilmington St.
Raleigh, NC 27611

2018 STANDARD SPECIFICATIONS

Reviewed by:
JEFF WALSTON, PE

Roadway Standard Drawings

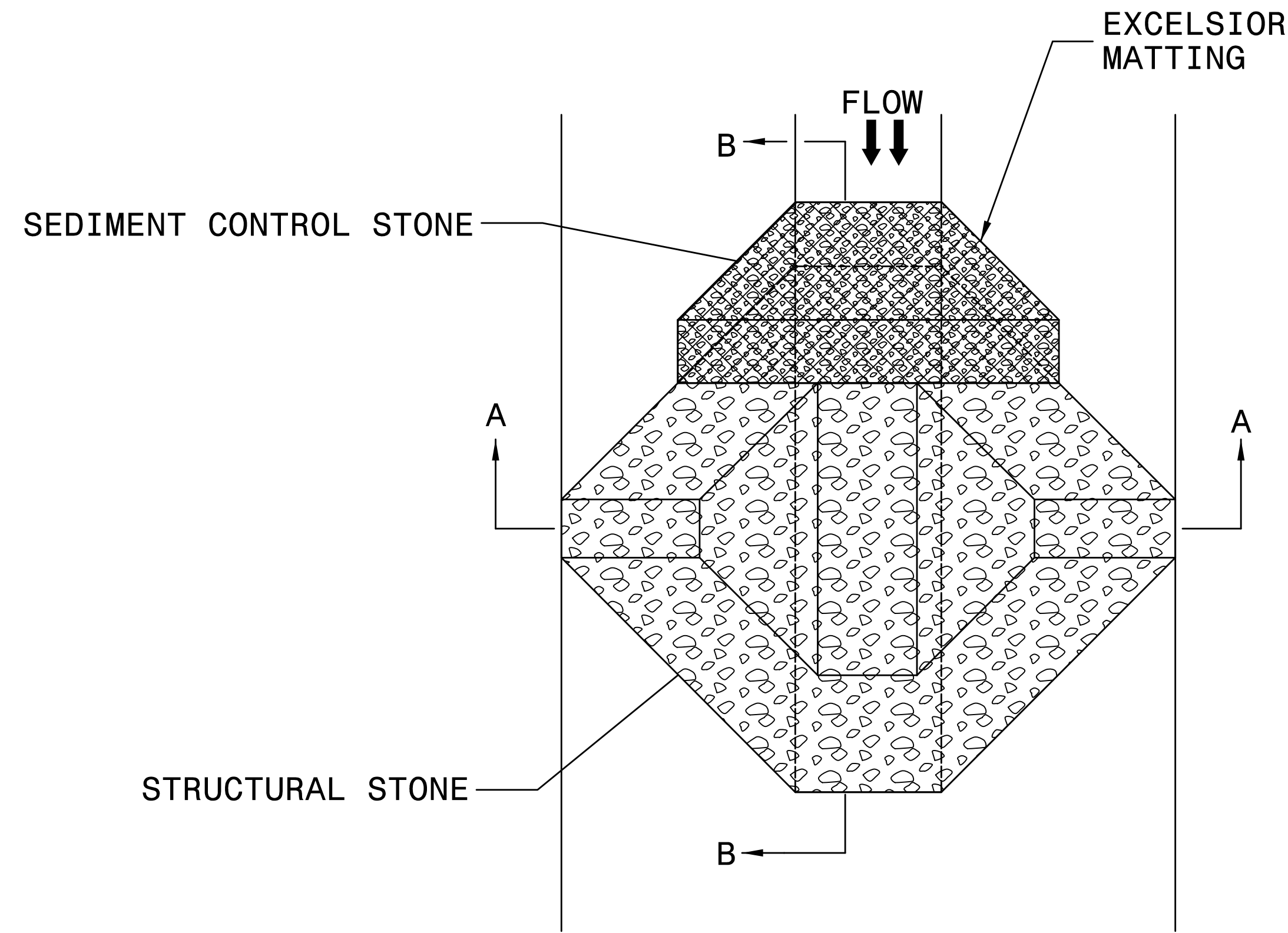
The following roadway english standards as appear in "Roadway Standard Drawings"- Roadway Design Unit - N. C. Department of Transportation - Raleigh, N. C., dated January 2018 and the latest revision thereto are applicable to this project and by reference hereby are considered a part of these plans.

1604.01 Railroad Erosion Control Detail	1632.01 Rock Inlet Sediment Trap Type A
1605.01 Temporary Silt Fence	1632.02 Rock Inlet Sediment Trap Type B
1606.01 Special Sediment Control Fence	1632.03 Rock Inlet Sediment Trap Type C
1607.01 Gravel Construction Entrance	1633.01 Temporary Rock Silt Check Type A
1622.01 Temporary Berms and Slope Drains	1633.02 Temporary Rock Silt Check Type B
1630.01 Riser Basin	1634.01 Temporary Rock Sediment Dam Type A
1630.02 Silt Basin Type B	1634.02 Temporary Rock Sediment Dam Type B
1630.03 Temporary Silt Ditch	1635.01 Rock Pipe Inlet Sediment Trap Type A
1630.04 Stilling Basin	1635.02 Rock Pipe Inlet Sediment Trap Type B
1630.05 Temporary Diversion	1640.01 Coir Fiber Wattle
1630.06 Special Stilling Basin	1645.01 Temporary Stream Crossing
1631.01 Matting Installation	

1/1/2018
C:\Users\barham\OneDrive\Documents\B5140_EC_tsh.dgn
USER:barham

PROJECT REFERENCE NO. B-5140	SHEET NO. EC-02
RW SHEET NO.	
ROADWAY DESIGN ENGINEER	HYDRAULICS ENGINEER

TEMPORARY ROCK SILT CHECK TYPE 'A' WITH EXCELSIOR MATTING AND POLYACRYLAMIDE (PAM)



PLAN

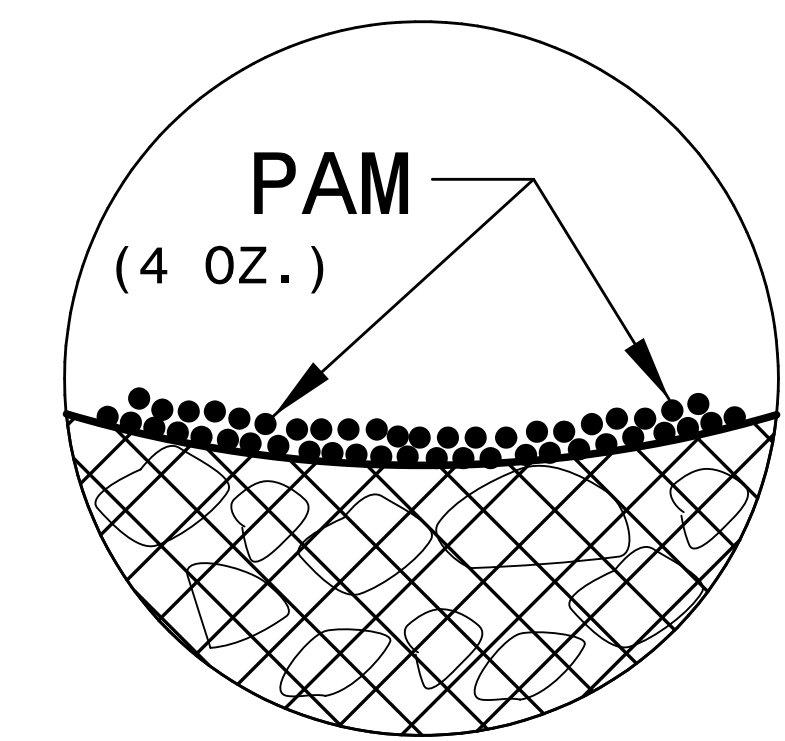
NOTES:

INSTALL TEMPORARY ROCK SILT CHECK TYPE A IN ACCORDANCE WITH ROADWAY STANDARD DRAWING NO. 1633.01.

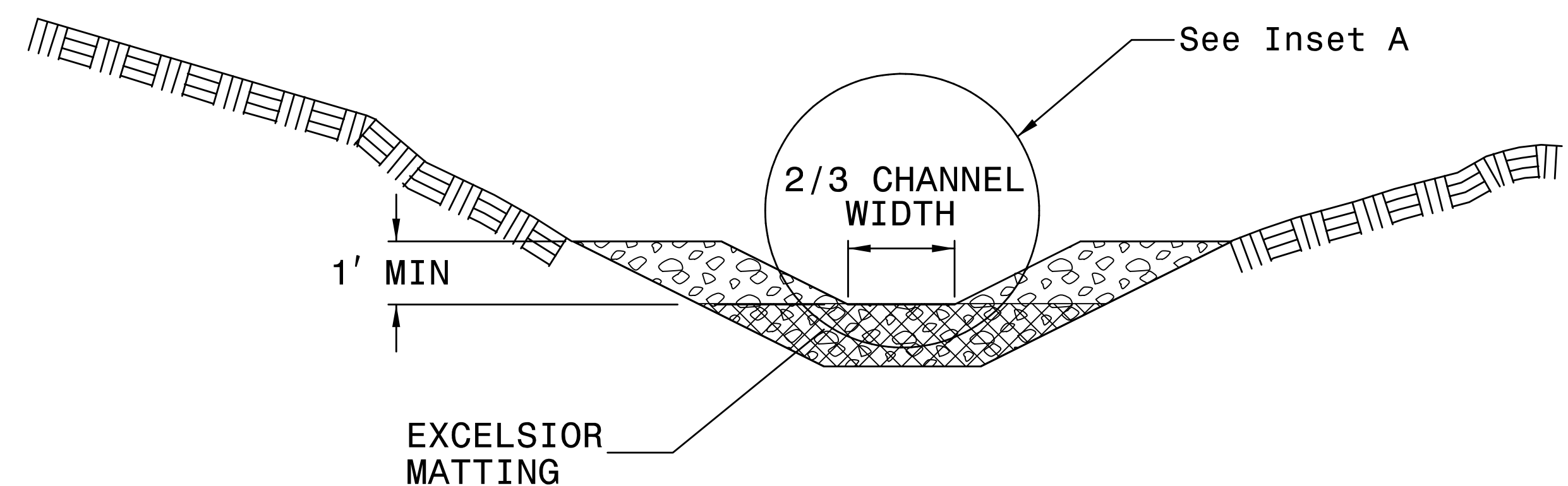
USE EXCELSIOR FOR MATTING MATERIAL AND ANCHOR MATTING SECTION AT TOP AND BOTTOM WITH CLASS B STONE.

PRIOR TO POLYACRYLAMIDE (PAM) APPLICATION, OBTAIN A SOIL SAMPLE FROM PROJECT LOCATION, AND FROM OFFSITE MATERIAL, AND ANALYZE FOR APPROPRIATE PAM FLOCCULANT TO BE APPLIED TO EACH ROCK SILT CHECK.

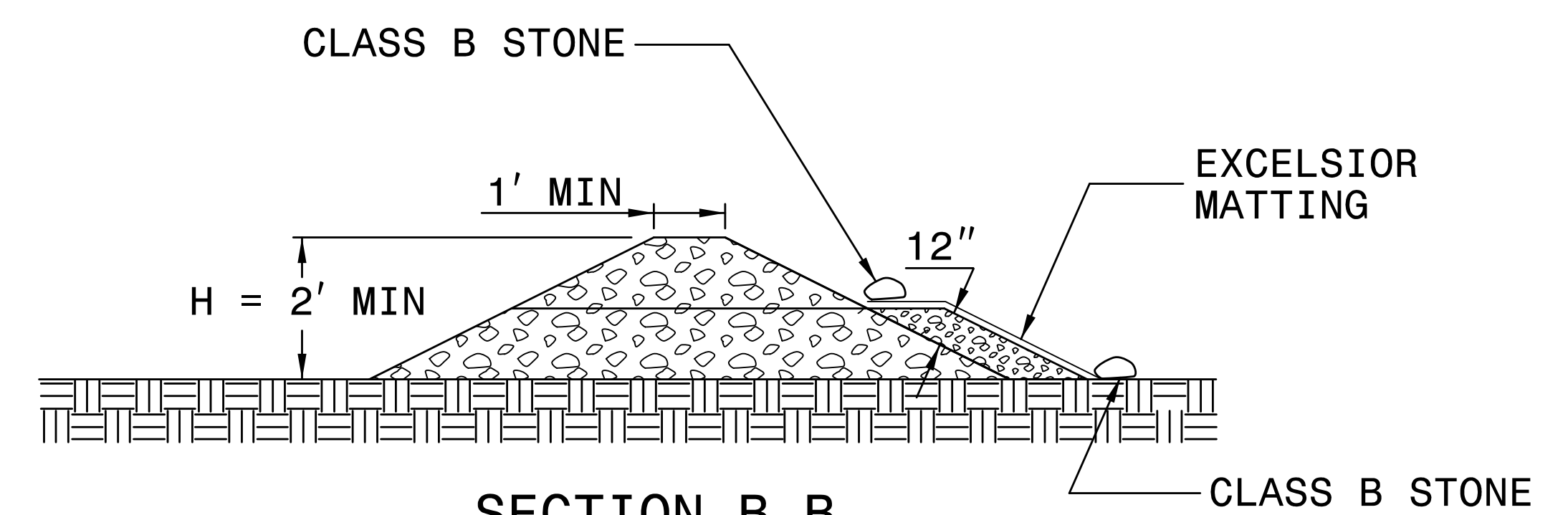
INITIALLY APPLY 4 OUNCES OF POLYACRYLAMIDE (PAM) TO TOP OF MATTING SECTION AND AFTER EVERY RAINFALL EVENT THAT EQUALS OR EXCEEDS 0.50 INCHES.



INSET A



SECTION A-A



SECTION B-B

NOT TO SCALE

DIVISION OF HIGHWAYS
STATE OF NORTH CAROLINA

PROJECT REFERENCE NO. <i>B-5140</i>	SHEET NO. <i>EC-03</i>
ROADWAY DESIGN ENGINEER	HYDRAULICS ENGINEER

SOIL STABILIZATION TIMEFRAMES

<i>SITE DESCRIPTION</i>	<i>STABILIZATION TIME</i>	<i>TIMEFRAME EXCEPTIONS</i>
PERIMETER DIKES, SWALES, DITCHES AND SLOPES	7 DAYS	NONE
HIGH QUALITY WATER (HQW) ZONES	7 DAYS	NONE
SLOPES STEEPER THAN 3:1	7 DAYS	IF SLOPES ARE 10' OR LESS IN LENGTH AND ARE NOT STEEPER THAN 2:1, 14 DAYS ARE ALLOWED.
SLOPES 3:1 OR FLATTER	14 DAYS	7 DAYS FOR SLOPES GREATER THAN 50' IN LENGTH.
ALL OTHER AREAS WITH SLOPES FLATTER THAN 4:1	14 DAYS	NONE, EXCEPT FOR PERIMETERS AND HQW ZONES.

8/17/99

LOCHNER

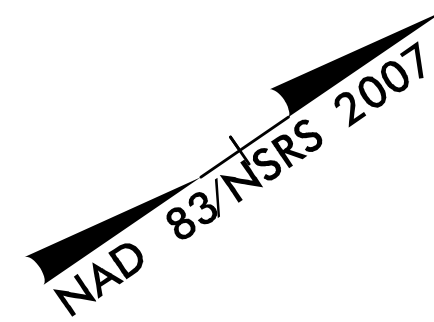
H. W. LOCHNER, INC.
2840 PLAZA PLACE, SUITE 202
RALEIGH, NC 27612
(919)571-7111

NC License
Number F-0159



NC FIRM LICENSE No. F-1148
1151 SE Cary Parkway
Suite 101
Cary, NC 27518
(919)557-0929

PROJECT REFERENCE NO. <i>B-5140</i>	SHEET NO. <i>EC-04/CONST.04</i>
RW SHEET NO.	
ROADWAY DESIGN ENGINEER	HYDRAULICS ENGINEER

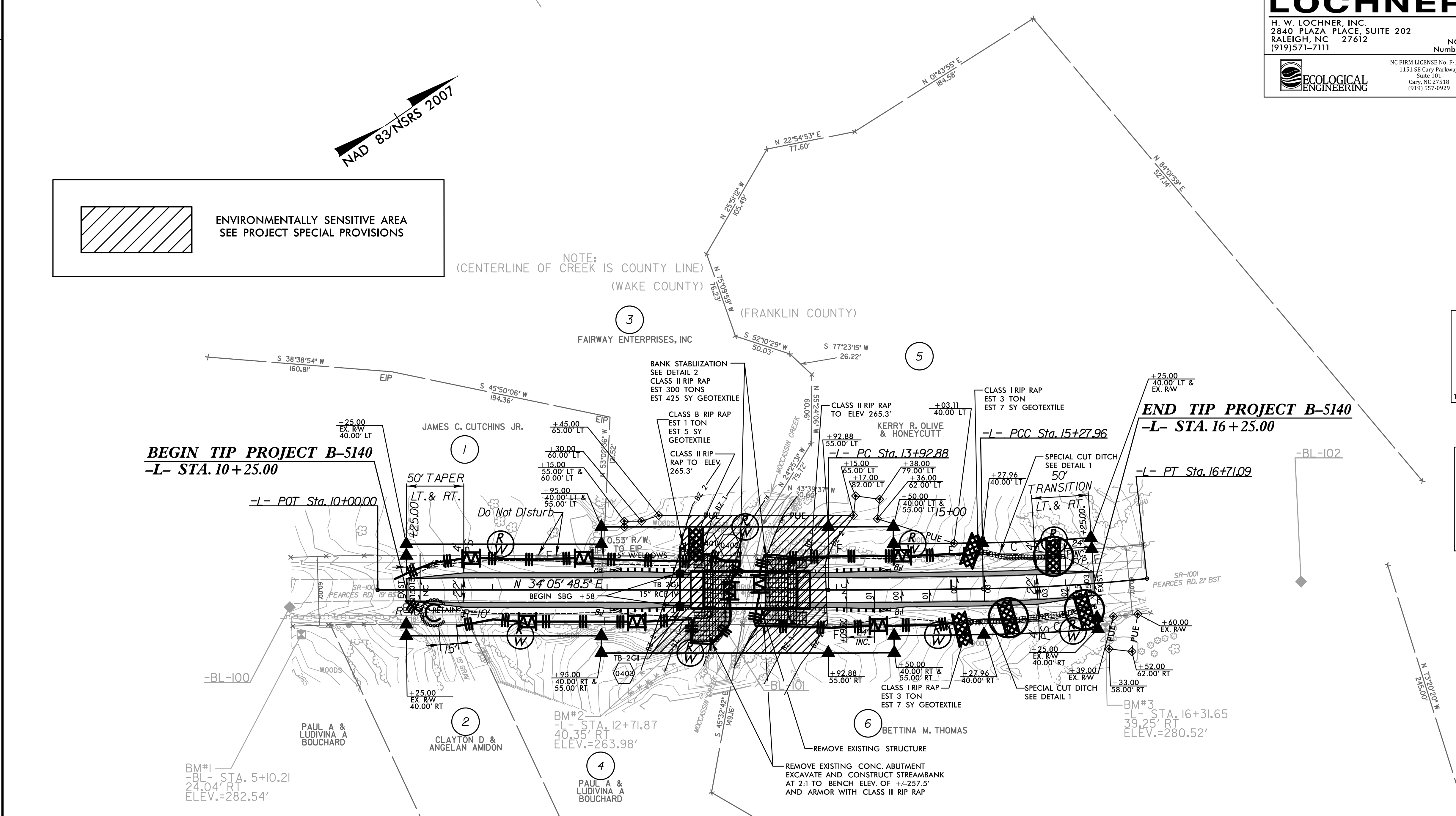
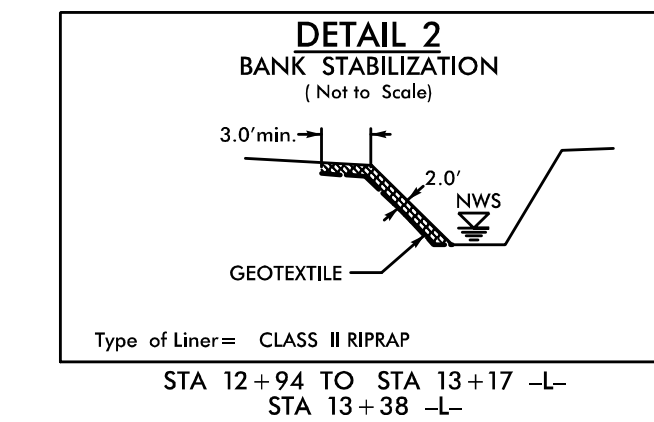
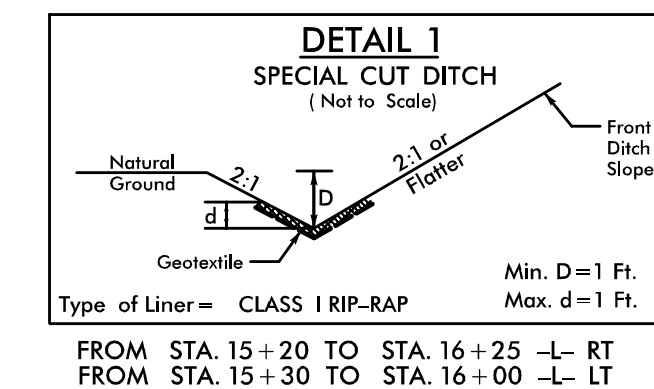


CLEARING AND GRUBBING
EROSION CONTROL FOR
CONSTRUCTION SHEET 4

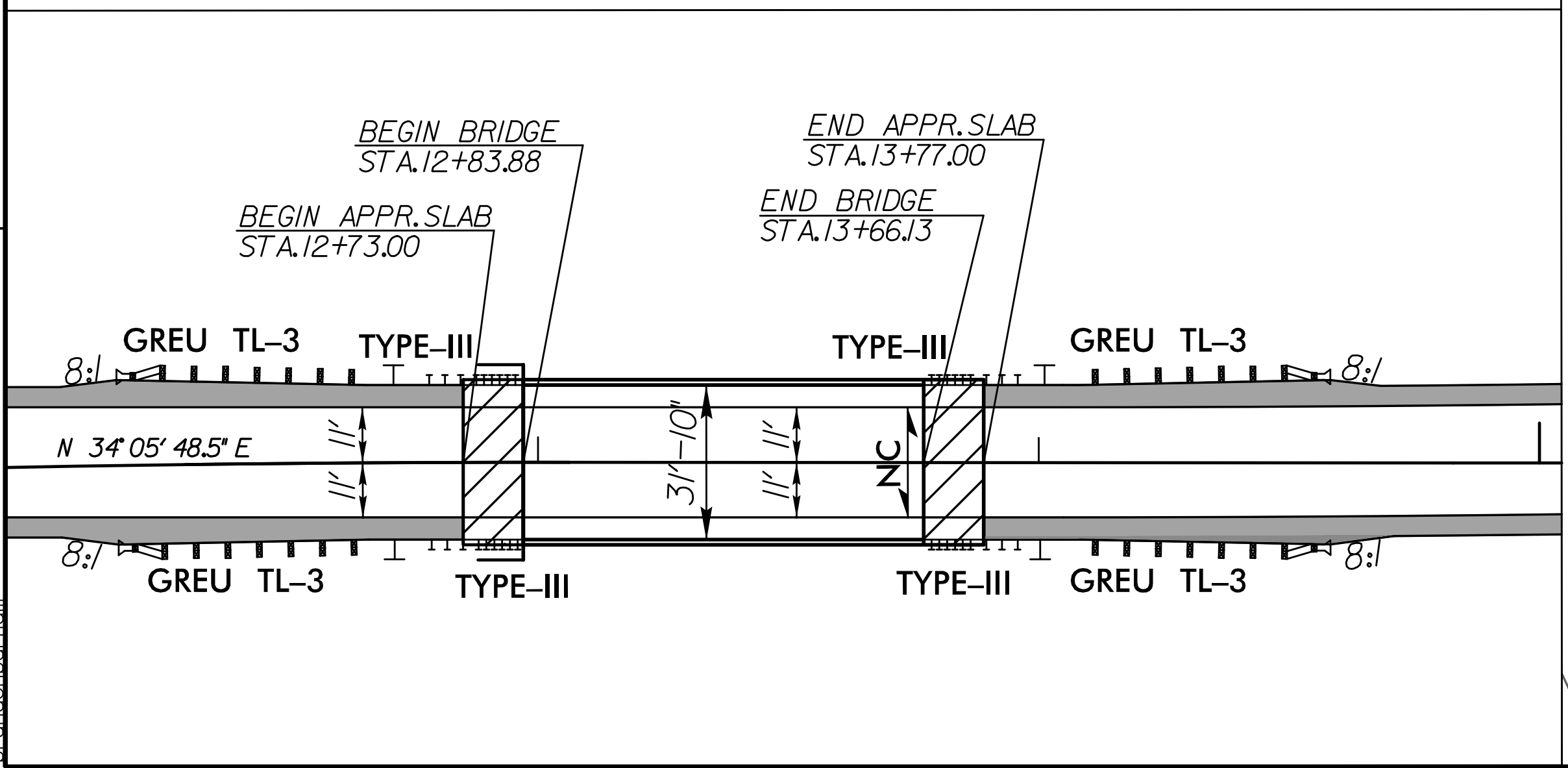
NOTE:
(CENTERLINE OF CREEK IS COUNTY LINE)
(WAKE COUNTY)
(FRANKLIN COUNTY)

BEGIN TIP PROJECT B-5140
-L- STA. 10+25.00

END TIP PROJECT B-5140
-L- STA. 16+25.00



BRIDGE/ PAVEMENT RELATIONSHIP SKETCH



PI Sta 14+60.42	PI Sta 15+99.57
$\Delta = 0' 58' 02.7''$ (LT)	$\Delta = 5' 07' 31.6''$ (LT)
$D = 0' 42' 58.3''$	$D = 3' 34' 51.6''$
$L = 135.08'$	$L = 143.13'$
$T = 67.54'$	$T = 71.61'$
$R = 8,000.00'$	$R = 1,600.00'$
$SE = NC$	$SE = 3\%$
	$Ro = 96.00'$

PAVED SHOULDER

SEE SHEET 5 FOR -L- PROFILE

SEE SHEETS S-1 TO S-? FOR STRUCTURE PLANS

REVISIONS

3:47:18 PM
R:\Environmental\Design\B5140_EC.C&G.dgn
pandabachan

8/17/99

LOCHNER

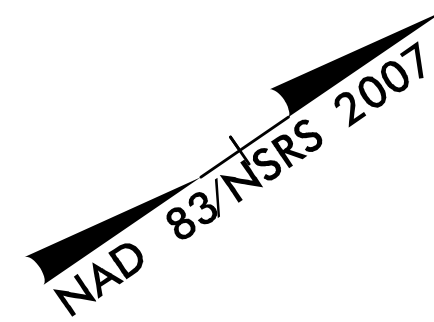
H. W. LOCHNER, INC.
2840 PLAZA PLACE, SUITE 202
RALEIGH, NC 27612
(919) 571-7111

NC License
Number F-0159

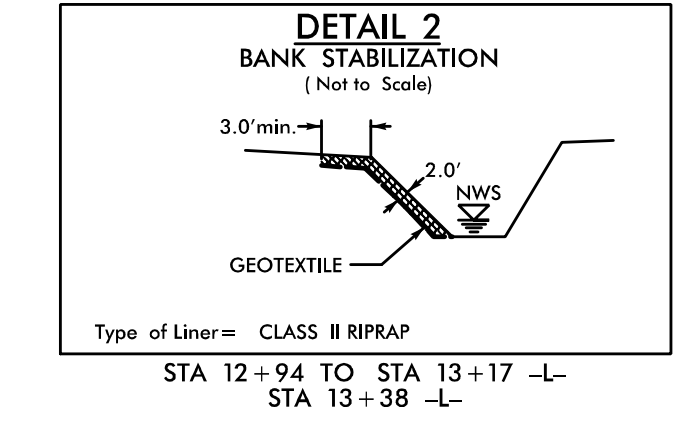
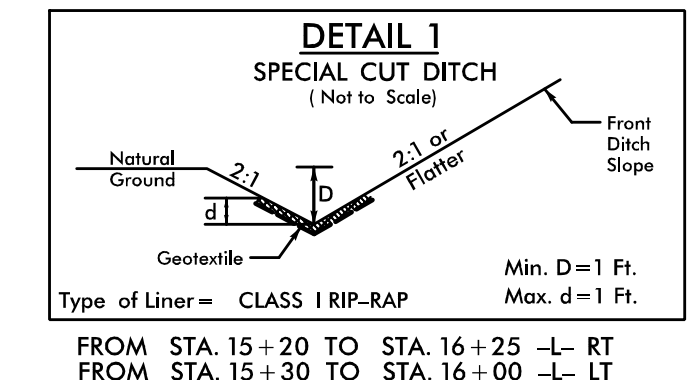
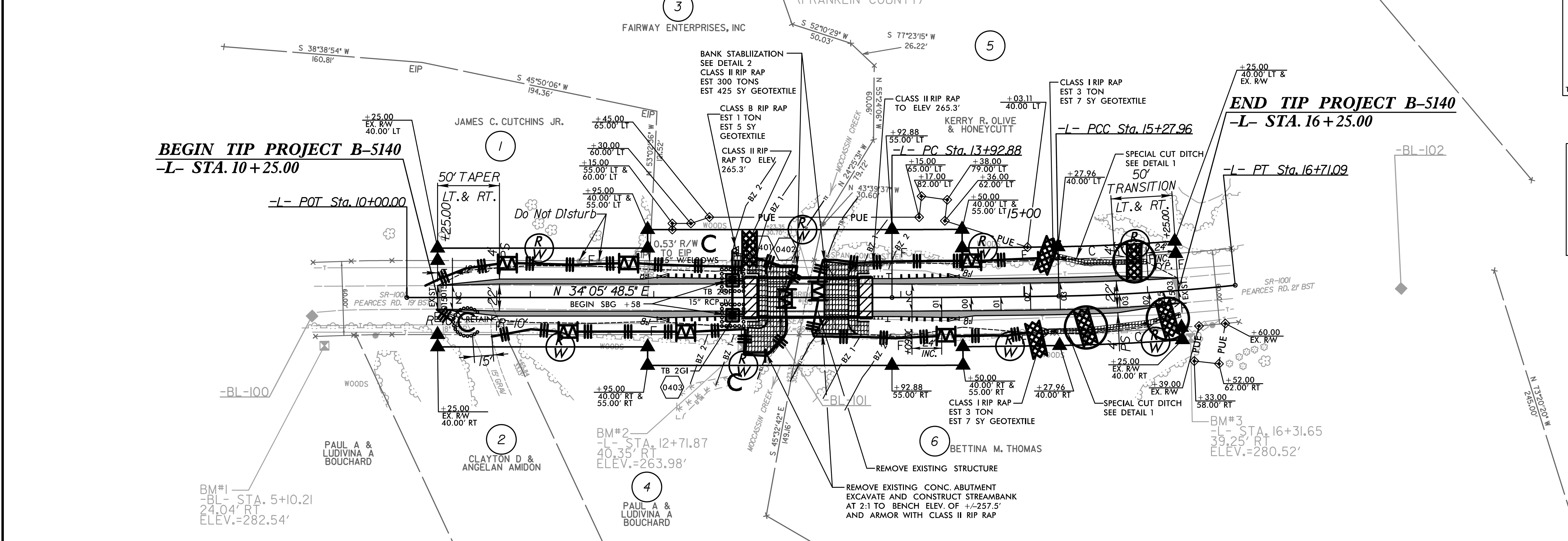


NC FIRM LICENSE No. F-1148
1151 SE Cary Parkway
Suite 101
Cary, NC 27518
(919) 557-0929

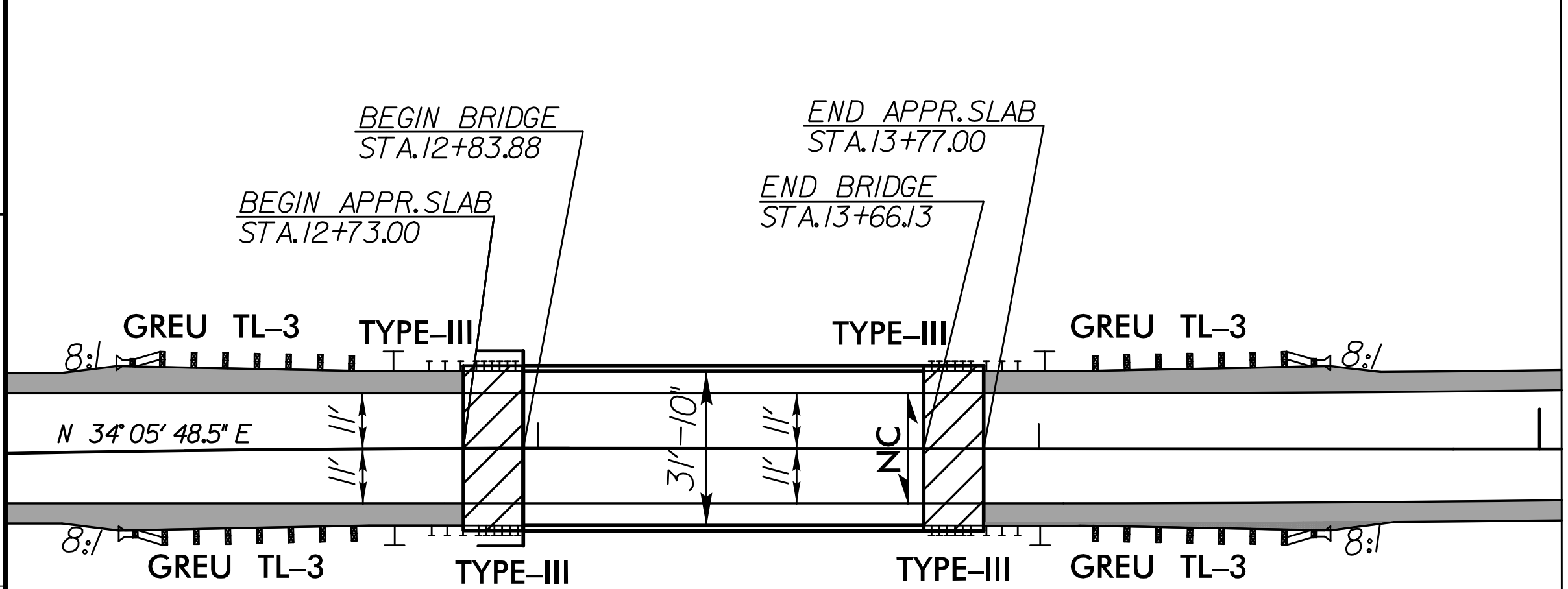
PROJECT REFERENCE NO. <i>B-5140</i>	SHEET NO. <i>EC-05/CONST.05</i>
RW SHEET NO.	
ROADWAY DESIGN ENGINEER	HYDRAULICS ENGINEER



NOTE:
(CENTERLINE OF CREEK IS COUNTY LINE)
(WAKE COUNTY) (FRANKLIN COUNTY)



BRIDGE/ PAVEMENT RELATIONSHIP SKETCH



PI Sta 14+60.42	PI Sta 15+99.57
$\Delta = 0' 58' 02.7''$ (LT)	$\Delta = 5' 07' 31.6''$ (LT)
$D = 0' 42' 58.3''$	$D = 3' 34' 51.6''$
$L = 135.08'$	$L = 143.13'$
$T = 67.54'$	$T = 71.61'$
$R = 8,000.00'$	$R = 1,600.00'$
$SE = NC$	$SE = 3\%$
	$Ro = 96.00'$

PAVED SHOULDER

SEE SHEET 5 FOR -L- PROFILE

SEE SHEETS S-1 TO S-? FOR STRUCTURE PLANS

REVISIONS

3:47:23 PM
R:\Environmental\Design\B5140_EC_FINAL.dgn
brandon