

DETOUR

Kimley»Horn

421 FAYETTEVILLE STREET, SUITE 600
RALEIGH, NC 27601

RIGHT-OF-WAY REV.
CONST. REV.

PROJECT REFERENCE NO. SHEET NO.

B-5352 EC-7/CONST. 7

R/W SHEET NO.

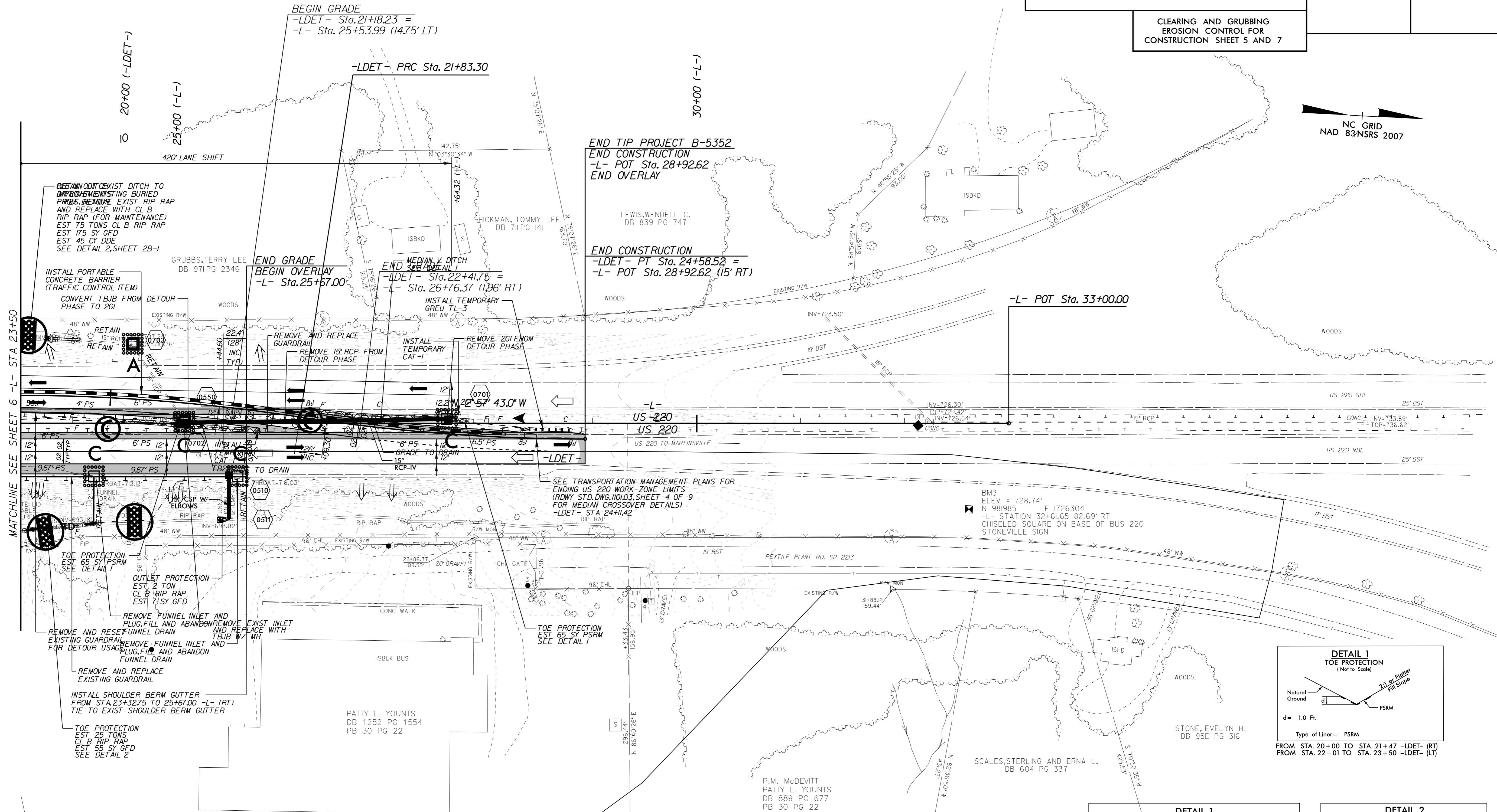
ROADWAY ENGINEER HYDRAULICS ENGINEER

NOTE: PLACE TEMPORARY ROCK SEDIMENT DAMS - B AND TEMPORARY ROCK SILT CHECKS TYPE - A AT DRAINAGE OUTLETS.

NOTE: PERIMETER EROSION CONTROL MEASURES SHALL BE INSTALLED DURING CLEARING AND GRUBBING PHASE.

CLEARING AND GRUBBING EROSION CONTROL FOR CONSTRUCTION SHEET 5 AND 7

NC GRID
NAD 83NSRS 2007



MATCHLINE SEE SHEET 6 -L- STA 23+50

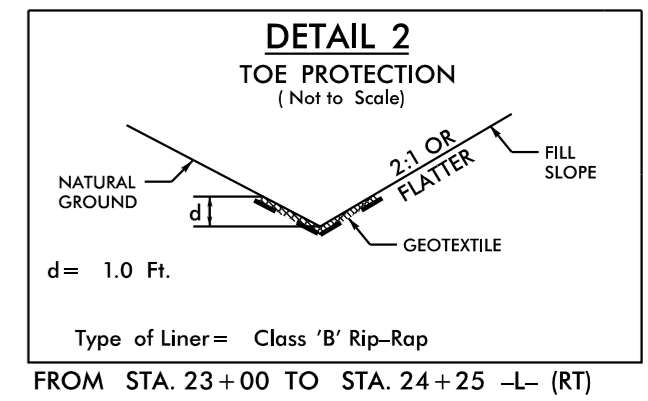
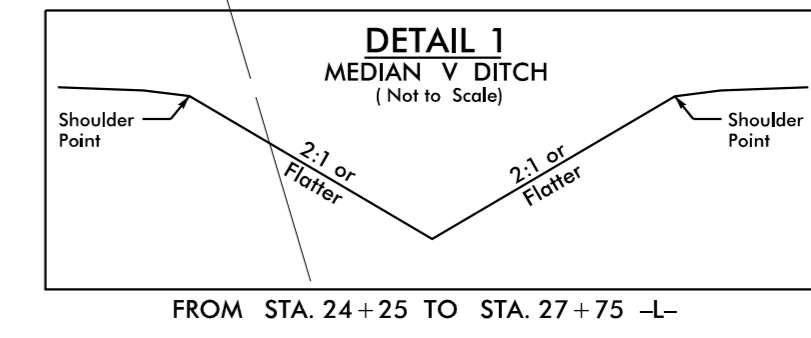
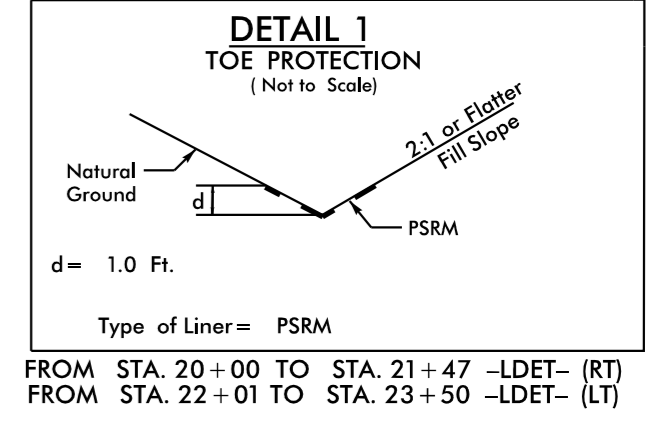
11/14/2017 K:\PAL_Roadway\01036275 - B-5352\Erosion Control\B-5352_ero_psn7.dgn

NOTES: ANY DEVIATION FROM OPTIONS GIVEN WILL REQUIRE PRIOR APPROVAL BY ENGINEER.

ADDITIONAL EROSION CONTROL DEVICES MAY NEED TO BE INSTALLED AS DIRECTED BY THE ENGINEER.

-LDET- ($V_{DET} = 55$ MPH)

PI Sta 20+45.96	PI Sta 23+21.18
$\Delta = 8' 45" 38.2" (RT)$	$\Delta = 8' 45" 38.2" (LT)$
$D = 3' 10" 59.2"$	$D = 3' 10" 59.2"$
$L = 275.22'$	$L = 275.22'$
$T = 137.88'$	$T = 137.88'$
$R = 1,800.00'$	$R = 1,800.00'$
SE = SEE PLANS	SE = SEE PLANS
RO = SEE PLANS	RO = SEE PLANS



SEE SHEET 8 FOR -LDET- PROFILE